

TL-98E

Parts list

Teilekatalog

Catalogue de pièces détachées

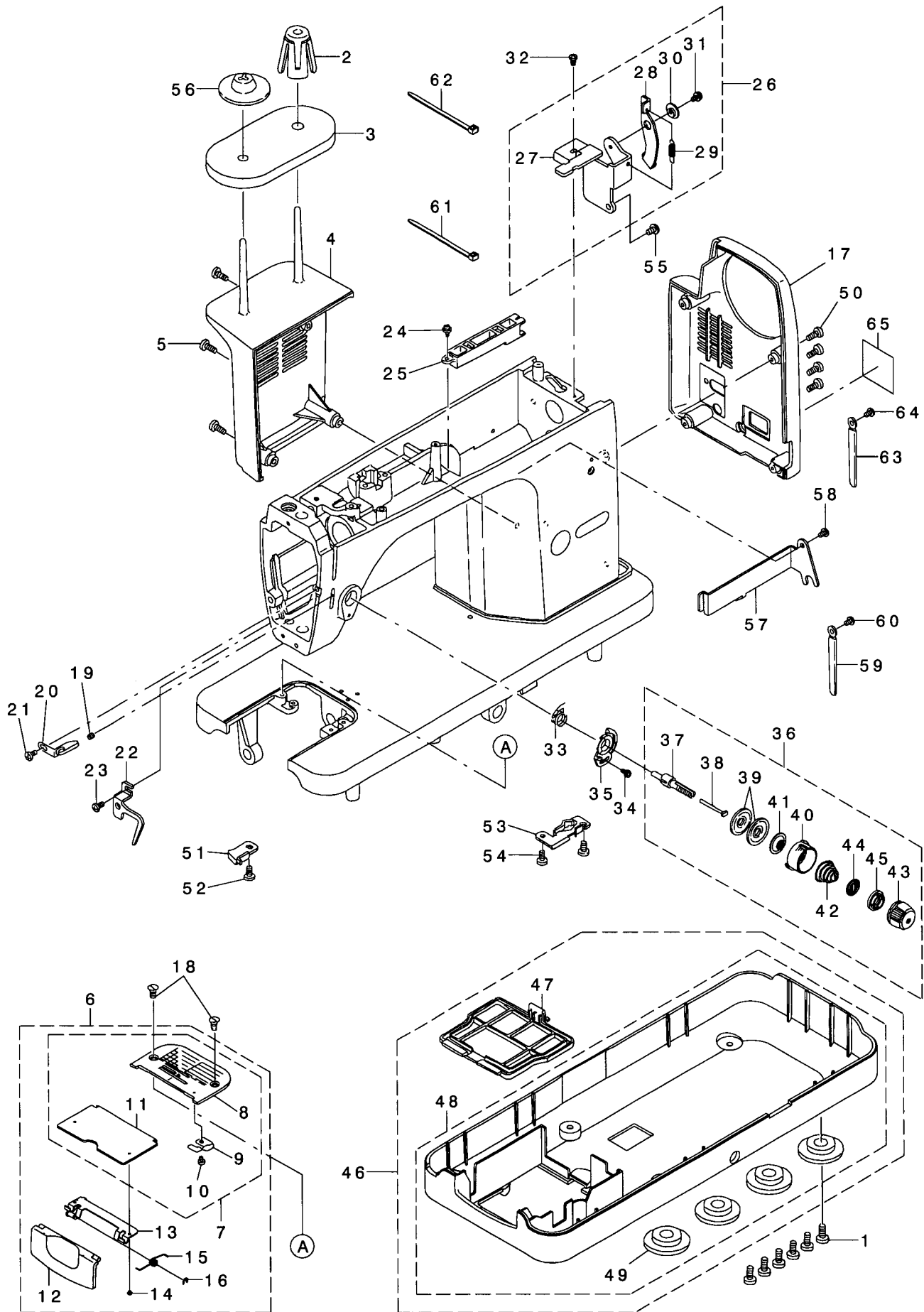
A9901-E98-Z00



CONTENTS

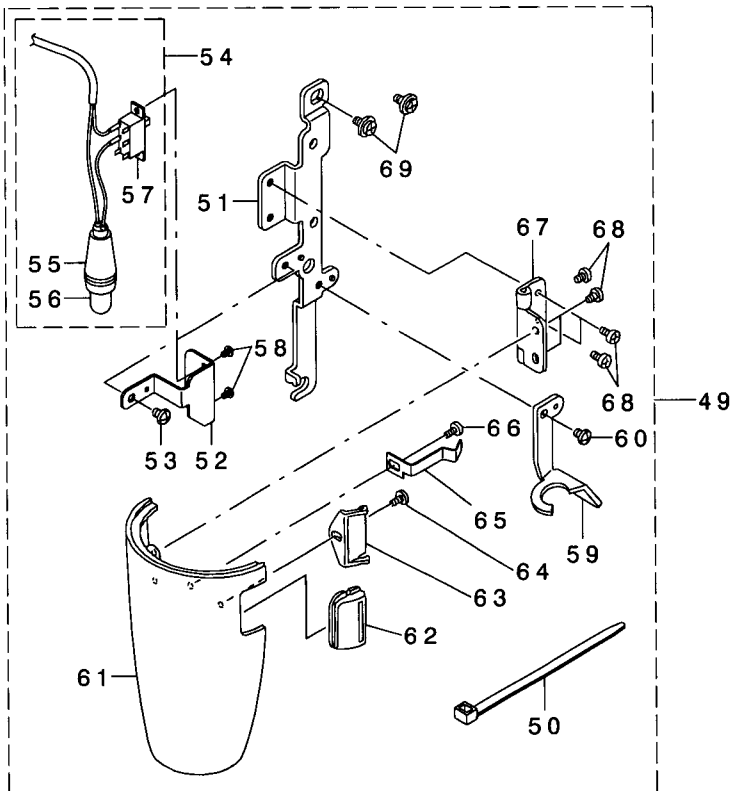
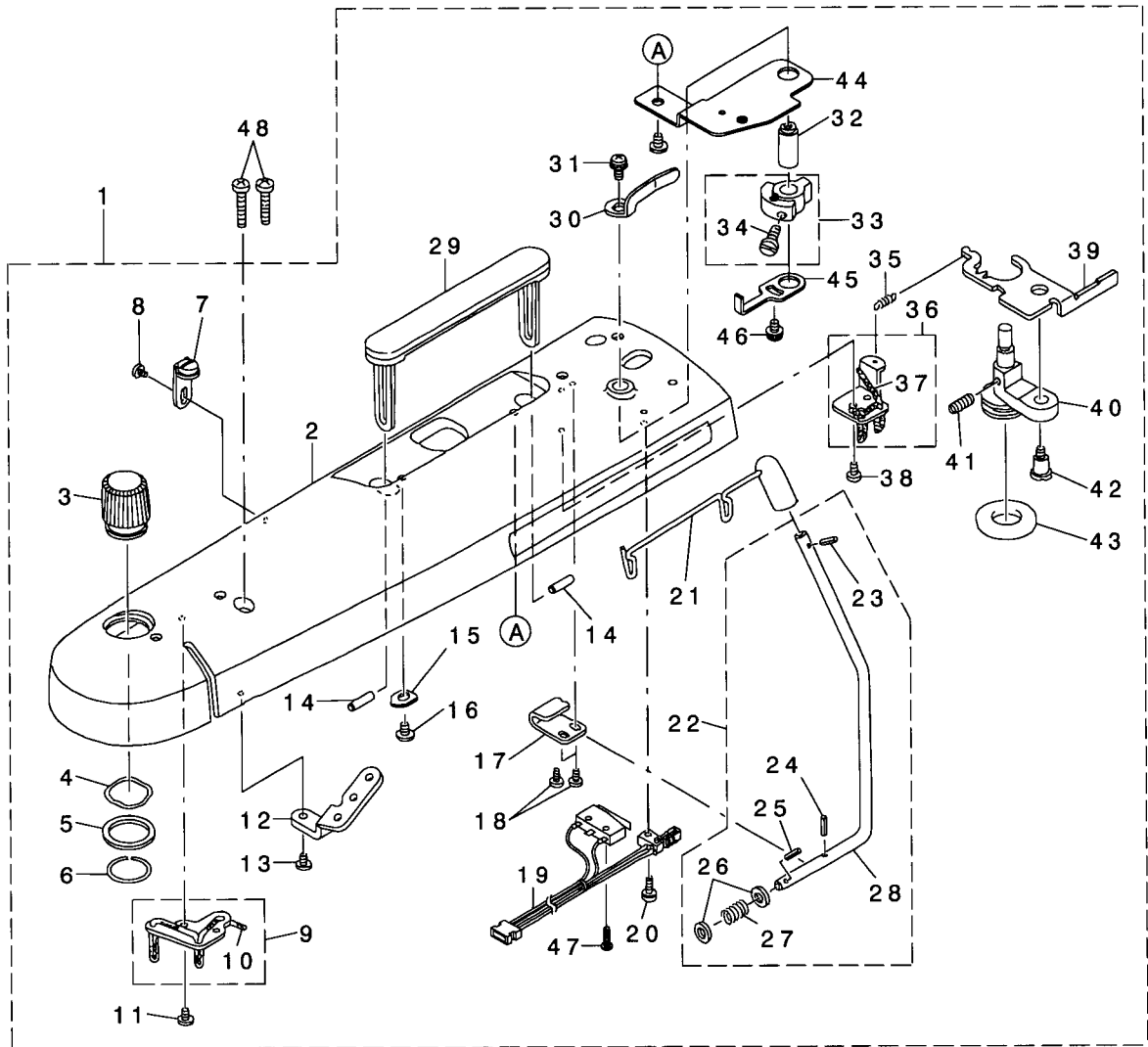
1. HEAD AND OUTER COMPONENTS	1
2. ARM COVER, FACE PLATE AND LAMP COMPONENTS	3
3. MAIN SHAFT, THREAD TAKE-UP AND IDLER COMPONENTS	5
4. NEEDLE BAR, HOOK DRIVING SHAFT AND THREADER COMPONENTS	7
5. FEED MECHANISM COMPONENTS	9
6. DROP FEED KNOB COMPONENTS	11
7. PRESSER, KNEE LIFTER, WIRE HOLDER AND THREAD RELEASE COMPONENTS . . .	13
8. MOTOR AND MAIN CIRCUIT BOARD COMPONENTS	15
9. MOVING KNIFE, LOOPER AND THREAD TRIMMER SOLENOID COMPONENTS	17
10. ACCESSORIES AND PACKING COMPONENTS	19
11. SEPARATELY-SOLD COMPONENTS	21

1. HEAD AND OUTER COMPONENTS



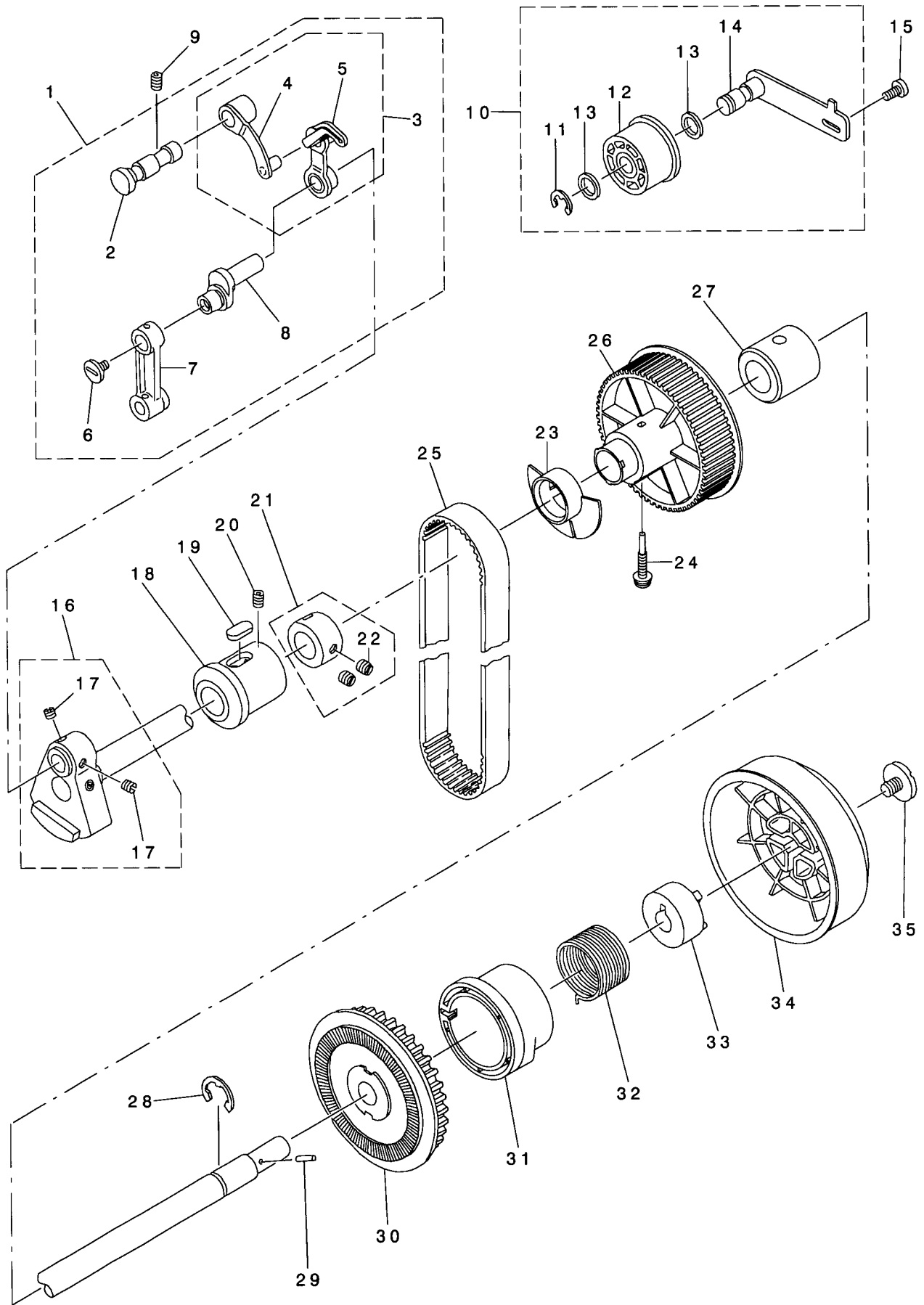
NO.	NOTE	PART NO.	DESCRIPTION	Qty
1		SM-5051255-SN	SCREW	6
2		A1120-202-000	BOBBIN WINDER DEFLECTION STOPPER	1
3		A1121-090-000	BOBBIN WINDER SHEET	1
4		A7105-090-000	MOTOR COVER	1
5		SM-5041255-SN	SCREW	3
6		A1109-E98-ZC0	NEEDLE PLATE WHOLE MAS. ASM.	1
7		A1109-E98-ZB0	NEEDLE PLATE MAS. ASM.	(1)
8		A1109-E98-Z00	NEEDLE PLATE	(1)
9		A1112-090-000	SPRING	(1)
10		SM-4020201-SN	SCREW	(1)
11		A1110-D98-0A0	BOBBIN CASE COVER ASM.	(1)
12		A1112-D98-000	SIDE COVER	(1)
13		A1113-E98-ZA0	STOPPER PLATE ASM.	(1)
14		SM-4020201-SN	SCREW	(2)
15		A1118-E98-Z00	SPRING	(1)
16		RE-0300000-K0	E-RING	(1)
17		A7103-E98-Z00	BELT COVER	1
18		SM-1040800-SL	SCREW	2
19		SM-8040602-TP	SCREW	1
20		A3114-090-000	THREAD GUIDE	1
21		SM-5030655-SN	SCREW	1
22		A3135-096-000	THREAD TENSION THREAD GUIDE	1
23		SM-4040855-SP	SCREW	1
24		SL-5030831-SF	SCREW	1
25		A5001-090-000	CORD GUIDE	1
26		A5000-096-0A0	CORD GUIDE PLATE ASM.	1
27		A5000-096-000	CORD GUIDE PLATE	(1)
28		A5002-096-000	CLUTCH PLATE	(1)
29		A3206-030-000	SPRING	(1)
30		A2435-033-000	LINK COLLAR	(1)
31		SL-5030635-SN	SCREW	(1)
32		SM-5030655-SN	SCREW	1
33		A3128-096-000	THREAD TAKE-UP SPRING	1
34		SL-5030801-SN	SCREW	1
35		A3111-D98-000	ADJUSTING PLATE	1
36		A3122-D98-0A0	THREAD TENSIONER ASM.	1
37		A3112-090-000	THREAD TENSION POST	(1)
38		A3127-090-000	TENSION RELEASE PIN	(1)
39		B3126-012-000	THREAD TENSION DISK	(2)
40		A3132-D98-000	DISK PRESSER	(1)
41		A3133-D98-000	DISK PRESSER PLATE	(1)
42		B3129-012-A00	THREAD TENSION SPRING A	(1)
43		A3124-096-000	KNOB	(1)
44		B3120-125-000	ROTATION STOPPER	(1)
45		A3124-096-A00	KNOB RATCHET	(1)
46		A1160-E98-ZB0	BED COVER MAS. ASM.	1
47		A1161-090-000	BED COVER LID	(1)
48		A1160-E98-ZA0	BED COVER ASM.	(1)
49		A1160-090-00A	RUBBER SEAT	(4)
50		SM-5041255-SN	SCREW	4
51		A8521-090-000	AUXILIARY TABLE SUPPORTING PLATE A	1
52		SM-5040855-SN	SCREW	1
53		A8522-090-000	AUXILIARY TABLE SUPPORTING PLATE B	1
54		SM-5040855-SN	SCREW	2
55		SM-5040655-SN	SCREW (LOWER)	1
56		A1150-090-000	SPOOL CUSHION	1
57		A4502-E98-Z00	CORD GUIDE PLATE	1
58		SM-5040601-SE	SCREW	1
59		A3811-550-000	CORD HOLDER	1
60		SM-5040601-SE	SCREW	1
61		A4078-550-00B	CLIP BAND	1
62		A4078-550-00B	CLIP BAND	1
63		A3811-550-000	CORD HOLDER	1
64		SM-5040601-SE	SCREW	1
65		A7103-E98-Z0A	WARNING LABEL FOR POWER SUPPLY CORD	1

2. ARM COVER, FACE PLATE AND LAMP COMPONENTS



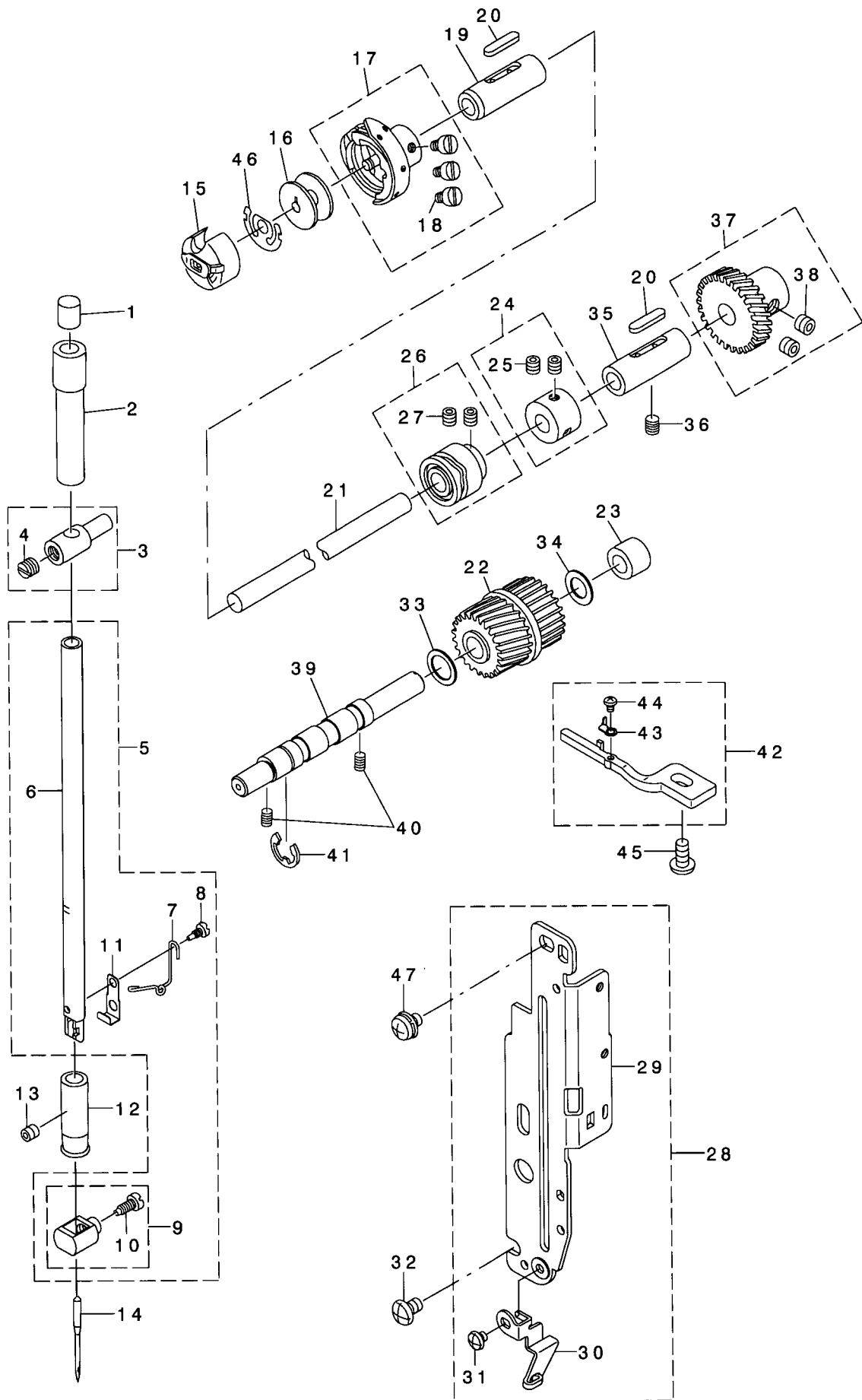
NO.	NOTE	PART NO.	DESCRIPTION	Qty
1		A1135-E98-ZB0	ARM COVER MAS. ASM.	1
2		A1135-E98-ZA0B	ARM COVER ASM.	(1)
3		A1502-090-000	KNOB	(1)
4		A1502-090-00C	WASHER	(1)
5		A1502-090-00B	WASHER	(1)
6		A1502-090-00A	STOP RING	(1)
7		A3231-957-0A0	THREAD GUIDE BASE ASM.	(1)
8		SM-5030655-SN	SCREW	(1)
9		A1136-090-0AA	STOPPER PLATE A ASM.	(1)
10		A1138-090-00A	OIL WICK A	(1)
11		SM-5030655-SN	SCREW	(1)
12		A1128-096-000	THREAD GUIDE NO. 1	(1)
13		SM-5030655-SN	SCREW	(1)
14		A1137-090-000	HANDLE GUIDE SHAFT	(2)
15		A1138-500-000A	WASHER	(1)
16		SM-5040655-SN	SCREW	(2)
17		A1116-090-000	THREAD GUIDE SUPPORT	(1)
18		SM-5030655-SN	SCREW	(2)
19		A3226-096-0A0	BOBBIN WINDER SWITCH ASM.	(1)
20		SL-5031031-SE	SCREW	(1)
21		A1115-090-000A	THREAD GUIDE	(1)
22		A1114-090-0A0	THREAD GUIDE POST ASM.	(1)
23		A1115-090-00A	PIN	(1)
24		PS-0200102-KH	THREAD GUIDE POST PIN	(1)
25		PS-0200122-KH	STOPPER PIN	(1)
26		WP-0531001-SD	WASHER	(2)
27		A1117-072-000	SPRING	(1)
28		A1114-090-000	THREAD GUIDE POST	(1)
29		A1134-090-0A0	HANDLE ASM.	(1)
30		A3217-072-000	BOBBIN HOLDER	(1)
31		SL-5030801-SN	SCREW	(1)
32		A3218-096-000	BOBBIN HOLDER SHAFT	(1)
33		A3219-096-0A0	BOBBIN WINDER CONTROLLER ASM.	(1)
34		SM-4041055-SF	SCREW	(1)
35		A3222-090-000	SPRING	(1)
36		A1136-090-0AB	OIL WICK HOLDER PLATE B ASM.	(1)
37		A1138-090-00B	OIL WICK B	(1)
38		SM-5030655-SN	SCREW	(1)
39		A3221-096-000	ADJUSTING PLATE	(1)
40		A3204-090-0A0	BOBBIN WINDER ASM.	(1)
41		A3208-958-000	SPRING	(1)
42		A3205-090-000	SCREW	(1)
43		A3216-001-00A	RUBBER RING	(1)
44		A3235-096-000	BOBBIN WINDER SWITCH INSTALLING PLATE	(1)
45		A3236-096-000	CONTACT PLATE	(1)
46		SL-5030635-SN	SCREW	(1)
47		SM-4830801-SN	SCREW	(1)
48		SM-5042005-SN	SCREW	2
49		A3805-E98-ZA0	FACE PLATE ASM.	1
50		A4078-550-00B	LAMP CLIP BAND	(2)
51		A3805-096-000	FACE PLATE	(1)
52		A3802-096-000	LAMP SWITCH INSTALLING PLATE	(1)
53		SM-5030455-SF	SCREW	(1)
54		A3801-096-0A0	LAMP SOCKET ASM.	(1)
55		A3801-096-000	LAMP SOCKET	(1)
56		A3803-096-000	LAMP BULB	(1)
57		HA-0034600-0A	SLIDE SWITCH	(1)
58		SM-4020301-SC	SCREW	(2)
59		A3804-096-000	LAMP INSTALLING BASE	(1)
60		SM-5030455-SF	SCREW	(1)
61		A3115-090-000	FACE COVER	(1)
62		A3116-D98-000	PRESSURE INDICATING PLATE	(1)
63		A3117-090-000	HOLDING PLATE	(1)
64		SM-5030655-SN	SCREW	(1)
65		A3119-096-000	SPRING	(1)
66		SM-5030655-SN	SCREW	(1)
67		A3118-090-0A0	FACE COVER LATCH ASM.	(1)
68		SM-5030655-SN	SCREW	(4)
69		SL-5040631-SE	SCREW	(2)

3. MAIN SHAFT, THREAD TAKE-UP AND IDLER COMPONENTS



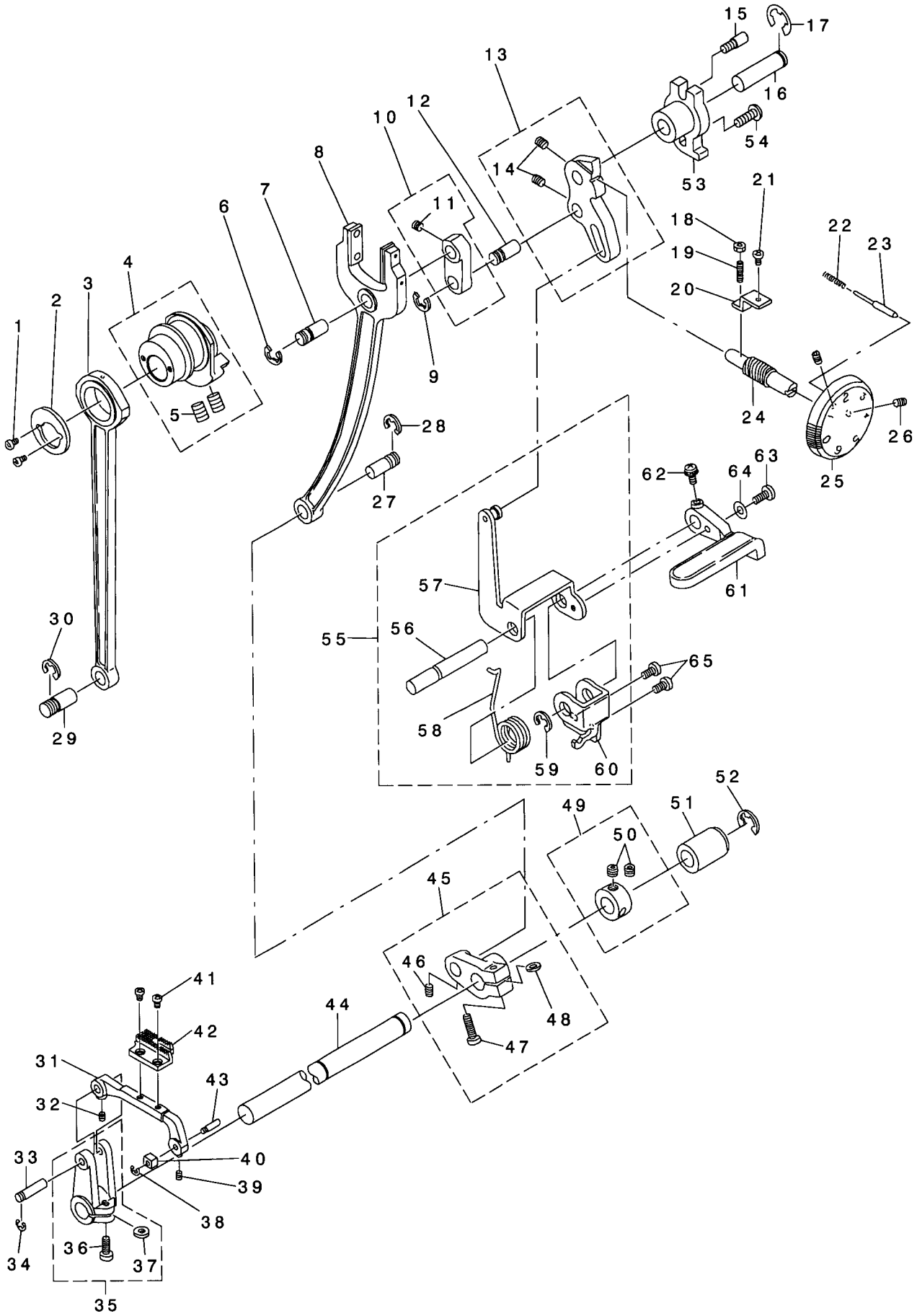
NO.	NOTE	PART NO.	DESCRIPTION	Qty
1		A1901-090-0C0	THREAD TAKE-UP MAS. ASM.	1
2		A1902-090-000	THREAD TAKE-UP SUPPORTING SHAFT	(1)
3		A1901-090-0B0	THREAD TAKE-UP ASM.	(1)
4		A1904-090-0A0	THREAD TAKE-UP SUPPORT ASM.	(1)
5		A1901-090-0A0	THREAD TAKE-UP BODY ASM.	(1)
6		A1219-907-000	LEFT SCREW	(1)
7		A1408-090-000	NEEDLE BAR CRANK ROD	(1)
8		A1209-072-000	NEEDLE BAR CRANK	(1)
9		SM-8050602-TP	SCREW	1
10		A7201-090-0B0	IDLER MAS. ASM.	1
11		RE-0600000-K0	E-RING	(1)
12		A7203-090-0A0	IDLER ASM.	(1)
13		A7204-090-000	WASHER	(2)
14		A7201-090-0A0	IDLER INSTALLING PLATE ASM.	(1)
15		SM-5040855-SN	SCREW	1
16		A1201-D98-0A0	MAIN SHAFT ASM.	1
17		SM-8060502-TP	SCREW	(2)
18		A1202-090-000	MAIN SHAFT FRONT BUSHING	1
19		A1203-007-000	FELT	1
20		SM-8050602-TP	SCREW	1
21		A1205-090-0A0	MAIN SHAFT THRUST COLLAR ASM.	1
22		SM-8060502-TP	SCREW	(2)
23		A1210-D98-000	MAIN SHAFT DETECTOR SHIELD	1
24		A1226-D98-000	SCREW	1
25		A7110-090-000	MAIN SHAFT TIMING-BELT	1
26		A1227-D98-000	MAIN SHAFT PULLEY	1
27		A1204-090-000	MAIN SHAFT REAR BUSHING	1
28		RE-1000000-K0	E-RING	1
29		A1225-090-000	STOPPER PIN	1
30		A1232-090-000	MOTOR PULLEY	1
31		A1224-096-000	CLUTCH SPRING SUPPORT	1
32		A1248-096-000	CLUTCH SPRING	1
33		A1229-090-000	HAND WHEEL BUSHING	1
34		A1228-090-000	HAND WHEEL	1
35		A1230-500-000	SCREW	1

4. NEEDLE BAR, HOOK DRIVING SHAFT AND THREADER COMPONENTS



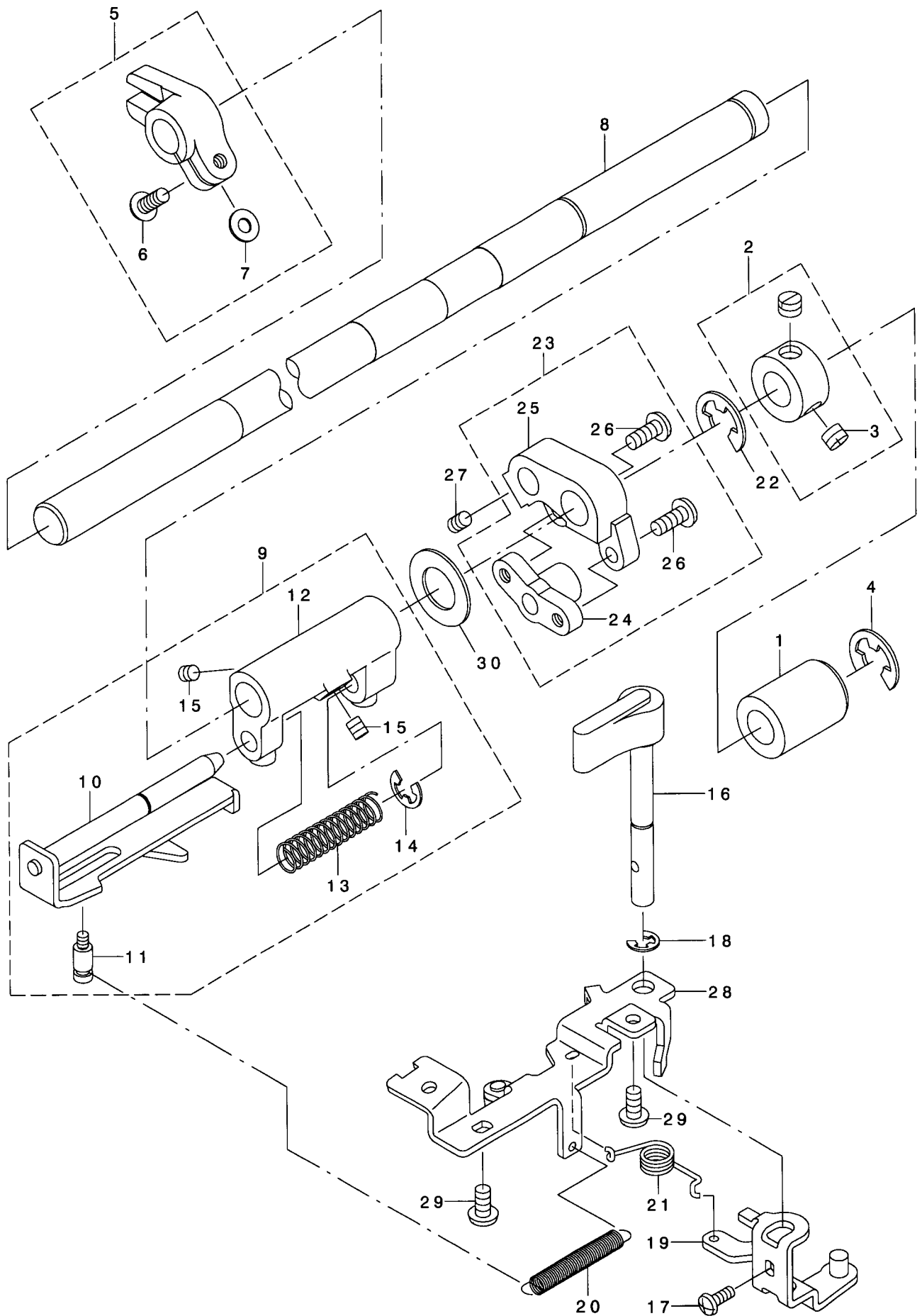
NO.	NOTE	PART NO.	DESCRIPTION	Qty
1		A1404-072-000	FELT	1
2		A1402-090-000	NEEDLE BAR UPPER BUSHING	1
3		A1411-090-0A0	NEEDLE BAR CONNECTION ASM.	1
4		SM-8060510-SP	SCREW	(1)
5		A1401-096-0B0	NEEDLE BAR ASM.	1
6		A1401-096-000	NEEDLE BAR	(1)
7		A1416-096-00A	NEEDLE BAR THREAD BRACKET	(1)
8		A1420-001-000	SCREW	(1)
9		A1416-096-0A0	NEEDLE CLAMP ASM.	(1)
10		A1417-096-000	SCREW	(1)
11		A1402-096-000	NEEDLE MIS-INSERT PREVENTING PLATE	(1)
12		A1403-090-000	NEEDLE BAR LOWER-BUSHING	1
13		SM-8040402-TP	SCREW	1
14		MHA-100B1400	NEEDLE(HA x 1 #14)	1
15		A1837-090-0A0	BOBBIN CASE ASM.	1
16		A9117-007-000	BOBBIN	1
17		A1830-096-0A0	HOOK ASM.	1
18		SS-6110560-TP	SCREW	(3)
19		A1802-007-000	HOOK DRIVING SHAFT FRONT BUSHING	1
20		B1806-038-000	FELT	2
21		A1801-D98-000	HOOK DRIVING SHAFT	1
22		A1807-090-000	HOOK DRIVING SHAFT PULLEY	1
23		A1809-096-00A	ECCENTRIC SHAFT BUSHING	1
24		A1891-096-0A0	HOOK DRIVING SHAFT THRUST COLLAR ASM.	1
25		SM-8040402-TP	SCREW	(2)
26		A2402-090-0A0	THREAD CUTTER CAM ASM.	1
27		SM-8050602-TP	SCREW	(2)
28		A1450-E98-ZA0	THREAD SUPPORTING PLATE ASM.	1
29		A1450-096-000	THREAD SUPPORTING PLATE	(1)
30		A1419-096-000	NEEDLE BAR THREAD GUIDE	(1)
31		SM-5030355-SN	SCREW	(1)
32		SM-4040655-SN	SCREW(LOWER)	1
33		WP-0850616-SP	WASHER A	1
34		WP-0700616-SP	WASHER B	1
35		A1804-007-000	HOOK DRIVING SHAFT REAR BUSHING	1
36		SM-8050602-TP	SCREW	1
37		A1805-D98-0A0	HOOK DRIVING SHAFT GEAR ASM.	1
38		SM-8050402-TP	SCREW	(2)
39		A1809-D98-000	PULLEY ECCENTRIC SHAFT	1
40		SM-8040602-TP	SCREW	2
41		RE-0600000-K0	E-RING	1
42		A1835-090-0A0	BOBBIN CASE POSITIONING FINGER ASM.	1
43		A1835-090-A00	SPRING	(1)
44		SM-4020301-SN	SCREW	(1)
45		SM-5040855-SN	SCREW	1
46		A1837-700-00A	IDLING PREVENTING SPRING	1
47		SL-5040631-SE	SCREW(UPPER)	1

5. FEED MECHANISM COMPONENTS



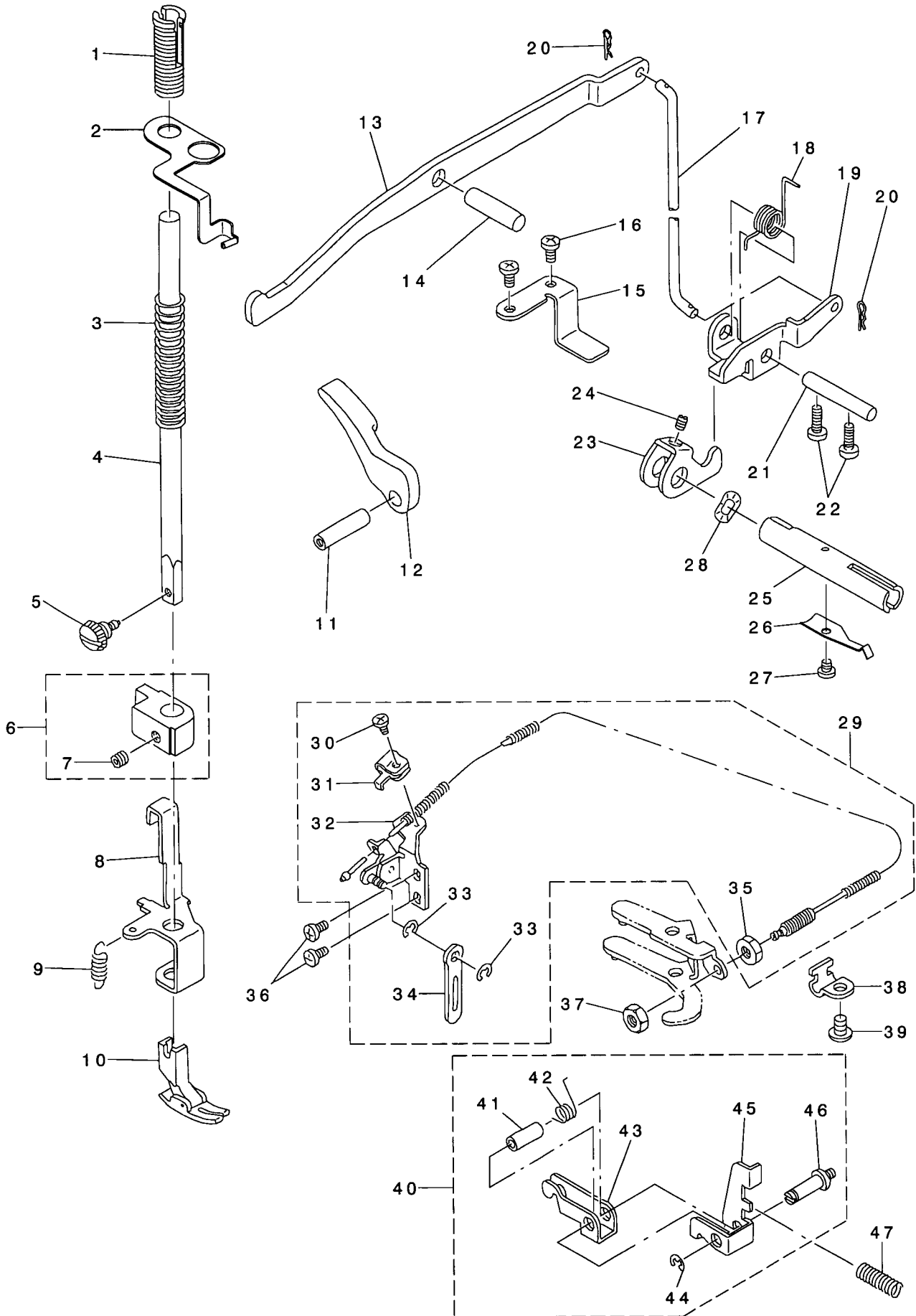
NO.	NOTE	PART NO.	DESCRIPTION	Qty
1		SM-4860655-SN	SCREW	2
2		A1208-090-000	FEED CAM THRUST PLATE	1
3		A1701-090-000	FEED ROD	1
4		A1207-090-0A0	FEED CAM ASM.	1
5		SM-8060802-TP	SCREW	(2)
6		RE-0600000-K0	E-RING	3
7		A1618-090-000	CONNECTING SHAFT	1
8		A1614-090-0A0	FORKED ROD ASM.	1
9		RE-0600000-K0	E-RING	1
10		A1619-090-0A0	FORKED LINK ASM.	1
11		SM-8050602-TP	SCREW	(1)
12		A1618-090-000	FORKED ROD SHAFT	1
13		A1622-090-0A0	FEED REGULATOR ASM.	1
14		SM-8050602-TP	SCREW	(2)
15		A1627-090-000	ROTATION STOPPER	1
16		A1625-090-000	FEED REGULATOR SHAFT	1
17		RE-0600000-K0	E-RING	1
18		NM-6030002-SF	NUT	1
19		SM-8031400-TP	SCREW	1
20		A1653-090-000	STOPPER	1
21		SM-5030655-SN	SCREW	1
22		B1148-012-000	SPRING	1
23		A1147-090-000	PIN	1
24		A1652-090-000	SCREW	1
25		A1647-096-0A0	FEED DIAL ASM.	1
26		SM-8030402-TP	SCREW	2
27		A1618-090-000	FORKED ROD CONNECTING SHAFT	1
28		RE-0600000-K0	E-RING	1
29		A1618-090-000	FEED ROD CONNECTING SHAFT	1
30		RE-0600000-K0	E-RING	1
31		A1602-090-000	FEED BASE	1
32		SM-8030502-TP	SCREW	1
33		A1603-090-000	FEED BASE SHAFT	1
34		RE-0300000-K0	E-RING	1
35		A1605-090-0A0	FEED SHAFT ARM ASM.	1
36		SM-4041055-SP	SCREW	(1)
37		WP-0430801-SD	WASHER	(1)
38		RE-0200000-K0	E-RING	1
39		SM-8030502-TP	SCREW	1
40		A1710-090-000	FEED BASE SQUARE BLOCK	1
41		A1606-090-000	SCREW	2
42		B1613-012-A00	FEED DOG A	1
43		A1711-090-000	SQUARE BLOCK SHAFT	1
44		A1601-096-000	FEED ROD SHAFT	1
45		A1612-090-0A0	FEED ROD ARM ASM.	1
46		SM-8040602-TP	SCREW	(1)
47		SM-5041455-SP	SCREW	(1)
48		WP-0430801-SD	WASHER	(1)
49		A1203-008-0A0	THRUST COLLAR ASM.	1
50		SM-8060502-TP	SCREW	(2)
51		A1604-090-000	REAR BUSHING	1
52		RE-0800000-K0	E-RING	1
53		A1626-090-000	FEED REGULATOR SHAFT BUSHING	1
54		SM-5041255-SN	SCREW	1
55		A1620-090-0B0	FEED REGULATOR LEVER ARM (PARTIAL ASM.)	1
56		A1621-090-000	FEED REGULATOR LEVER SHAFT	(1)
57		A1620-090-0A0	FEED REGULATOR LEVER ARM ASM.	(1)
58		A1683-090-000	SPRING	(1)
59		RE-0600000-K0	E-RING	(1)
60		A1623-090-000	INSTALLING PLATE	(1)
61		A1628-090-000	FEED REGULATOR LEVER	1
62		SL-5030831-SF	SCREW	1
63		SM-5041055-SN	SCREW	1
64		WP-0430801-SC	WASHER	1
65		SM-5040855-SN	SCREW	2

6. DROP FEED KNOB COMPONENTS



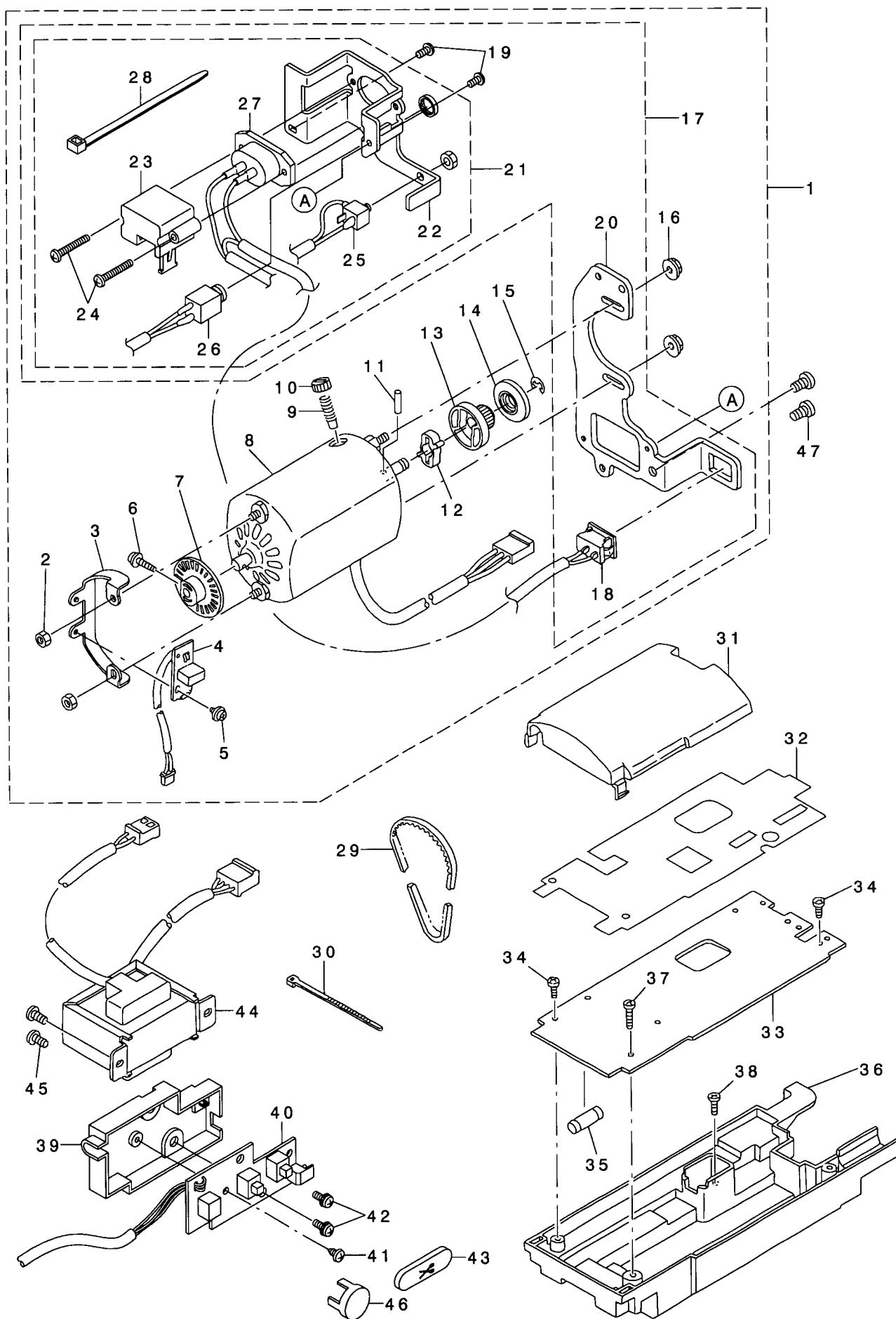
NO.	NOTE	PART NO.	DESCRIPTION	Qty
1		A1604-090-000	VERTICAL FEED SHAFT REAR METAL	1
2		A1203-008-0A0	THRUST COLLAR ASM.	1
3		SM-8060502-TP	SCREW	(2)
4		RE-0800000-K0	E-RING	1
5		A1704-090-0A0	VERTICAL FEED SHAFT ARM ASM.	1
6		SM-4041055-SP	SCREW	(1)
7		WP-0430801-SD	WASHER	(1)
8		A1601-096-000	VERTICAL FEED SHAFT	1
9		A1665-096-0B0	DROP FEED CHANGE SHAFT PLATE MAS. ASM.	1
10		A1665-096-0A0	DROP FEED CHANGE SHAFT PLATE ASM.	(1)
11		A1663-096-000	GUIDE PIN A	(1)
12		A1662-096-000	GUIDE	(1)
13		A1667-096-000	SPRING	(1)
14		RE-0500000-K0	E-RING	(1)
15		SM-8040402-TP	SCREW	(2)
16		A1674-096-000	DROP FEED KNOB	1
17		SM-5030855-SN	SCREW	1
18		RE-0400000-K0	E-RING	1
19		A1671-096-0A0	DROP FEED ADJUSTING ARM ASM.	1
20		A1668-096-000	GUIDE SPRING	1
21		A1673-096-000	SPRING	1
22		RE-0800000-K0	E-RING	1
23		A1702-096-0A0	VERTICAL FEED ARM ASM.	1
24		A1661-096-000	DROP FEED CONNECTING SHAFT SUPPORT	(1)
25		A1702-096-000	VERTICAL FEED ARM	(1)
26		SM-5041055-SN	SCREW	(2)
27		SM-8040602-TP	SCREW	1
28		A2446-096-0A0	WIRE INSTALLING PLATE ASM.	1
29		SM-5040855-SN	SCREW	2
30		WP-1000316-RZ	WASHER	1

7. PRESSER, KNEE LIFTER, WIRE HOLDER AND THREAD RELEASE COMPONENTS



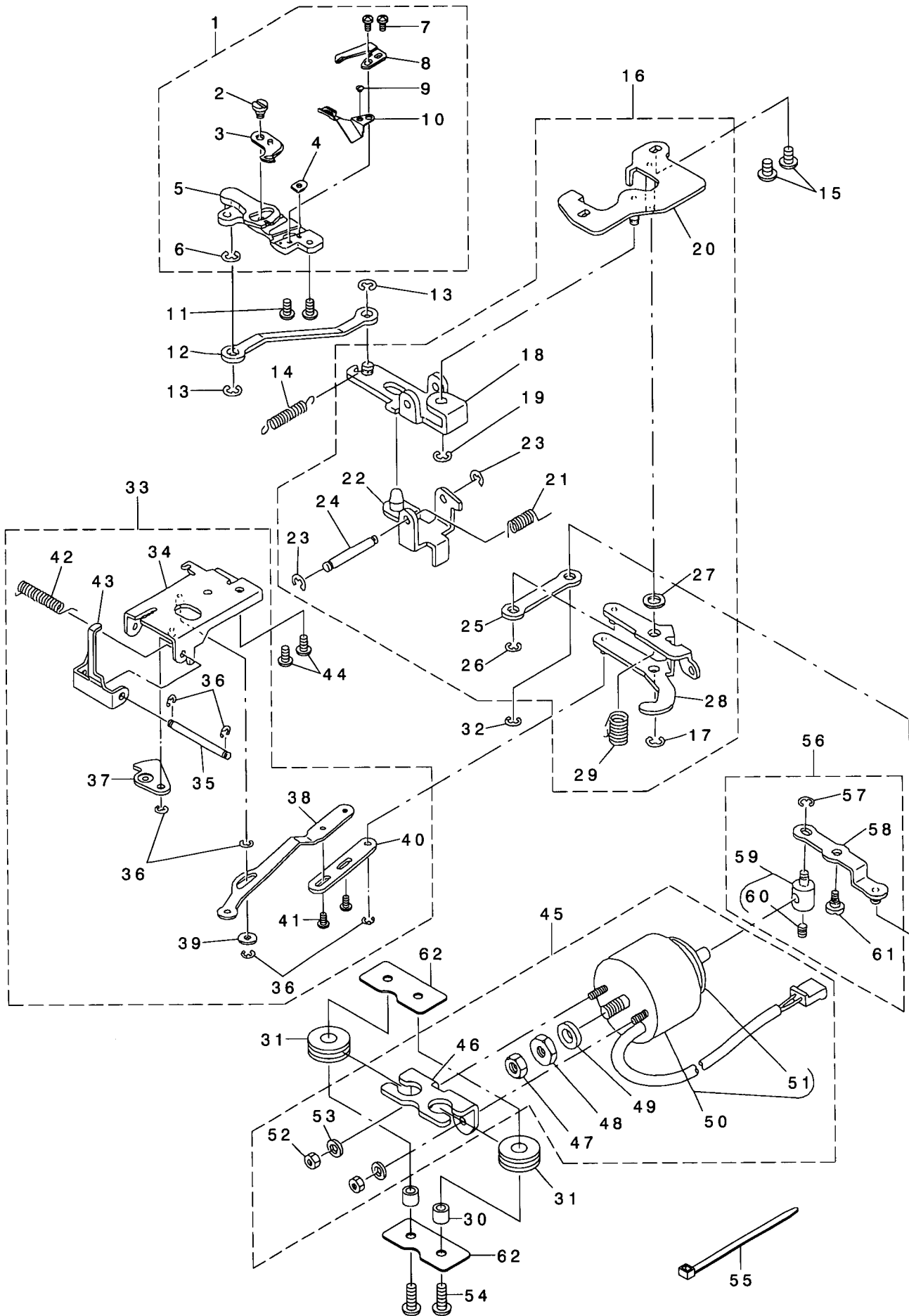
NO.	NOTE	PART NO.	DESCRIPTION	Qty
1		A1509-090-000	PRESSER REGULATING SCREW	1
2		A1503-D98-0A0	PRESSURE INDICATOR ASM.	1
3		A1505-090-000	PRESSER SPRING	1
4		A1501-090-000	PRESSER BAR	1
5		A1132-025-000	SCREW	1
6		A1507-096-0A0	PRESSER BAR CONNECTION ASM.	1
7		SM-8060502-TP	SCREW	(1)
8		A1508-090-000	PRESSER LEVER	1
9		A1515-090-000	SPRING	1
10		B1524-012-0A0	STANDARD PRESSER FOOT ASM.	1
11		A1513-090-000	LIFTING LEVER SHAFT	1
12		A1512-090-000	LIFTING LEVER	1
13		A3406-090-000	KNEE LIFTER LEVER	1
14		A3407-090-000	KNEE LIFTER LEVER SHAFT	1
15		A3408-090-000	STOPPING PLATE	1
16		SM-5040855-SN	SCREW	2
17		A3413-090-000	KNEE LIFTER LINK	1
18		A3411-090-000	SPRING	1
19		A3412-096-000	PLATE	1
20		A3413-090-00A	SNAP PIN	2
21		A3410-090-000	CLAW LEVER SHAFT	1
22		SM-5041255-SN	SCREW	2
23		A3422-090-000	CLAW LEVER ACTUATING PLATE	1
24		SM-8040602-TP	SCREW	1
25		A3420-090-000	KNEE LIFTER LEVER SHAFT	1
26		A3421-090-000	SPRING	1
27		SM-5030455-SF	SCREW	1
28		A3106-202-000	WASHER	1
29		A2440-090-0C0	WIRE HOLDER MAS. ASM.	1
30		SM-5030855-SN	SCREW	(3)
31		A2449-090-000	WIRE TUBE HOLDER B	(1)
32		A2440-090-0A0	WIRE HOLDER (PARTIAL ASM.)	(1)
33		RE-0300000-K0	E-RING	(2)
34		A2444-090-000	CONNECTING LINK	(1)
35		NS-6620310-SP	NUT	(1)
36		SM-5040855-SN	SCREW	2
37		NS-6620310-SP	NUT	1
38		A2441-096-000	WIRE TUBE HOLDER	1
39		SM-4040655-SN	SCREW	1
40		A1517-090-0A0	THREAD RELEASE PLATE ASM.	1
41		A1517-090-00C	BUSHING	(1)
42		A1517-090-00D	SPRING	(1)
43		A1517-090-00B	THREAD RELEASE PLATE B	(1)
44		RE-0300000-K0	E-RING	(1)
45		A1517-090-00A	THREAD RELEASE PLATE A	(1)
46		A1518-090-000	THREAD RELEASE PLATE SHAFT	(1)
47		A1519-090-000	SPRING	1

8. MOTOR AND MAIN CIRCUIT BOARD COMPONENTS



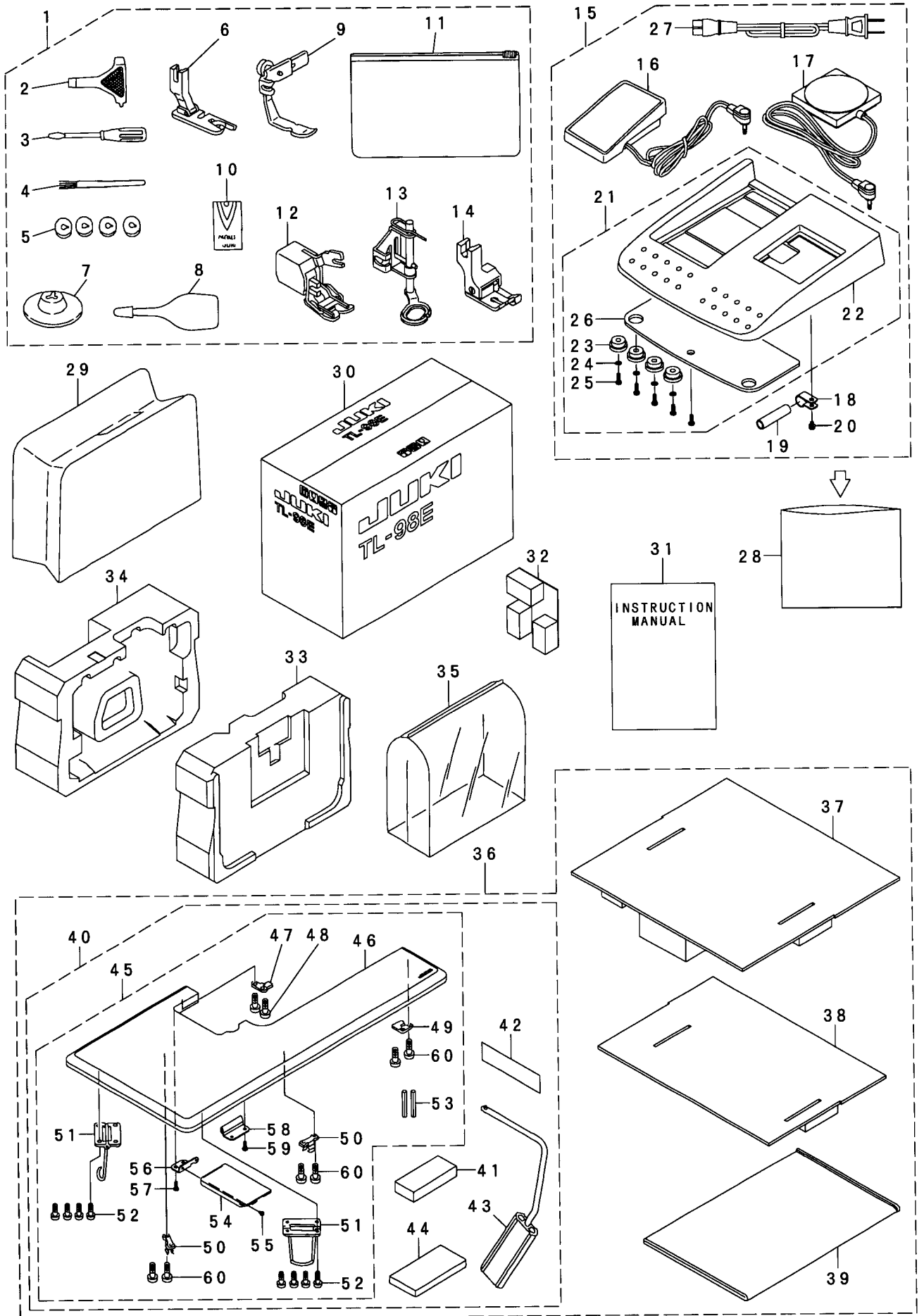
NO.	NOTE	PART NO.	DESCRIPTION	Qty
1		A7100-E98-ZC0	MOTOR C ASM.	1
2		NM-6040001-SN	NUT	(2)
3		A7120-096-000	MOTOR BOARD INSTALLING BASE	(1)
4		A7122-E98-ZA0	MP DETECTION BOARD ASM.	(1)
5		SL-5030531-SF	SCREW	(1)
6		SL-5031251-SP	SCREW	(1)
7		A7121-096-0A0	MP DETECTION BOARD SHUT PLATE ASM.	(1)
8		A7100-E98-ZA0	MOTOR A ASM.	(1)
9		A7100-090-00D	CARBON BRUSH	(2)
10		A7100-090-00E	BRUSH CAP	(2)
11		PS-0200142-KP	MOTOR SHAFT PULLEY PIN	(1)
12		A7100-009-00C	MOTOR RUBBER CUSHION	(1)
13		A7100-D98-00A	MOTOR SHAFT PULLEY	(1)
14		A7100-D98-00B	PULLEY FLANGE	(1)
15		RE-0400000-KR	E-RING	(1)
16		NM-3040550-SC	NUT	(2)
17		A7101-E98-ZA0	MOTOR BRACKET ASM.	(1)
18		A4032-880-000	POWER SWITCH	(1)
19		SM-5030655-SN	SCREW	(2)
20		A7101-090-000	MOTOR BRACKET	(1)
21		A4501-E98-ZA0	INLET INSTALLING PLATE ASM.	(1)
22		A4501-E98-Z00	INLET INSTALLING PLATE	(1)
23		A4503-E98-Z00	INLET COVER	(1)
24		SM-5032051-SE	SCREW	(2)
25		A7300-E98-ZA0	EXTERNAL THREAD TRIMMING SOCKET ASM.	(1)
26		A4015-E98-ZA0	CONTROLLER SOCKET ASM.	(1)
27		A4100-E98-ZA0	POWER CORD INLET ASM.	(1)
28		A4078-550-00B	CLIP BAND	(1)
29		A7112-090-000	MOTOR TIMING BELT	1
30		A4078-550-00B	MAIN BOARD CLIP BAND	4
31		A4042-090-000	CASE COVER	1
32		A4044-096-000	COVER	1
33		A4040-E98-ZA0	MAIN BOARD ASM.	1
34		ST-5030851-SN	SCREW	2
35		HF-0059050-PO	FUSE	1
36		A4043-090-000	MAIN BOARD CASE	1
37		SM-5031401-SE	SCREW B	1
38		SL-5030831-SF	SCREW A	1
39		A3225-096-000	THREAD TRIMMER SWITCH BOARD CASE	1
40		A3227-096-0A0	THREAD TRIMMER SWITCH BOARD ASM.	1
41		ST-5030551-SR	SCREW	1
42		SL-5030831-SF	SCREW	2
43		A3228-096-000	THREAD TRIMMER SWITCH BUTTON	1
44		A4505-E98-ZA0	POWER TRANSFORMER ASM.	1
45		SM-5040855-SN	SCREW	2
46		A4011-096-000	HALF STITCH SWITCH BUTTON	1
47		SM-5050855-SN	SCREW	2

9. MOVING KNIFE, LOOPER AND THREAD TRIMMER SOLENOID COMPONENTS



NO.	NOTE	PART NO.	DESCRIPTION	Qty
1		A1872-090-0B0	MOVING KNIFE BASE MAS. ASM.	1
2		A1873-090-000	SCREW	(1)
3		A1888-096-000	MOVING KNIFE	(1)
4		D2404-555-B00	COUNTER KNIFE MOUNTING PLATE	(1)
5		A1872-090-0A0	MOVING KNIFE BASE ASM.	(1)
6		RE-0400000-K0	E-RING	(1)
7		SM-5030655-SN	SCREW	(2)
8		D2406-555-D0H	COUNTER KNIFE	(1)
9		SS-2060210-SP	SCREW	(1)
10		A1890-090-000A	KNIFE THREAD GUIDE	(10)
11		SM-4040855-SP	SCREW	2
12		A1882-090-000	MOVING KNIFE LINK	1
13		RE-0400000-K0	E-RING	2
14		A1869-090-000	MOVING KNIFE ARM SPRING	1
15		SM-4050855-SP	SCREW	2
16		A1870-096-0C0	MOVING KNIFE INSTALLING PLATE MAS. ASM.	1
17		RE-0500000-K0	E-RING	(1)
18		A1876-090-0A0	MOVING KNIFE ARM ASM.	(1)
19		RE-0500000-K0	E-RING	(1)
20		A1870-090-0A0	MOVING KNIFE INSTALLING PLATE ASM.	(1)
21		A1881-090-000	SPRING	(1)
22		A1878-090-0A0	MOVING KNIFE ROLLER ARM ASM.	(1)
23		RE-0400000-K0	E-RING	(2)
24		A1880-090-000	ROLLER ARM SHAFT	(1)
25		A1725-090-000	THREAD TRIMMER SOLENOID LINK B	(1)
26		RE-0400000-K0	E-RING	(1)
27		A1728-090-00A	WASHER	(1)
28		A1727-096-0A0	LOOPER LINK ARM ASM.	(1)
29		A1729-090-000A	SPRING	(1)
30		A1721-096-00B	SOLENOID SUPPORT COLLAR	2
31		A1721-096-00C	CUSHION RUBBER	2
32		RE-0400000-K0	E-RING	1
33		A1705-D98-0B0	LOOPER MAS. ASM.	1
34		A1706-090-0A0	LOOPER INSTALLING PLATE ASM.	(1)
35		A1707-090-000	LOOPER SHAFT	(1)
36		RE-0300000-K0	E-RING	(6)
37		A1712-090-0A0	LOOPER CAM ASM.	(1)
38		A1730-090-00A	LOOPER LINK A	(1)
39		A1731-090-000	WASHER	(1)
40		A1730-090-00B	LOOPER LINK B	(1)
41		SM-5030655-SN	SCREW	(2)
42		A1708-090-000	LOOPER SPRING	(1)
43		A1705-D98-000	LOOPER	(1)
44		SM-5040855-SN	SCREW	2
45		A1721-E98-ZC0	THREAD TRIMMER SOLENOID MAS. ASM.	1
46		A1721-096-000	THREAD TRIMMER SOLENOID INSTALLING PLATE	(1)
47		NS-6660430-SP	NUT	(1)
48		NS-6660410-SH	NUT	(1)
49		1 1 0 - 4 3 3 0 4	SOLENOID RUBBER B	(1)
50		A2400-E98-ZA0	THREAD TRIMMER SOLENOID ASM.	(1)
51		1 1 0 - 4 3 2 0 5	SOLENOID RUBBER A	(1)
52		NM-6040001-SN	NUT	(2)
53		WP-0430801-SC	WASHER	(2)
54		SM-5051455-SF	SCREW	2
55		A4078-550-00B	CLIP BAND	1
56		A1723-090-0B0	THREAD TRIMMER SOLENOID LINK A MAS. ASM	1
57		RE-0300000-K0	E-RING	(1)
58		A1723-090-0A0	THREAD TRIMMER SOLENOID LINK A ASM.	(1)
59		A1722-090-000A	PIN	(1)
60		SM-8050602-TP	SCREW	(1)
61		A1724-090-000	HINGE SCREW	(1)
62		A1721-096-00A	CUSHION RUBBER SUPPORT PLATE	2

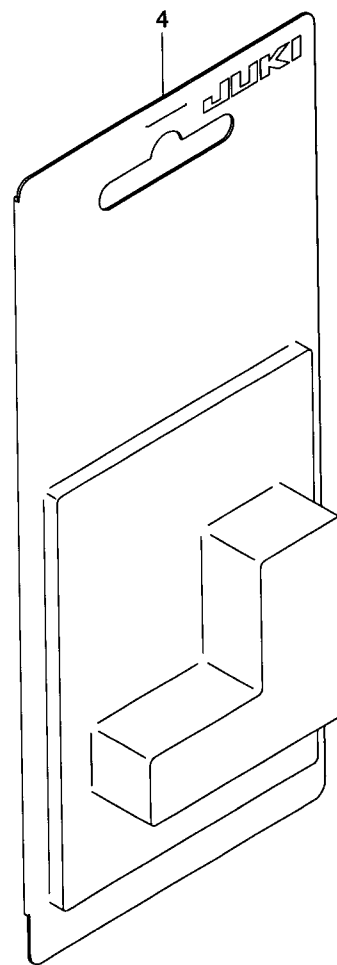
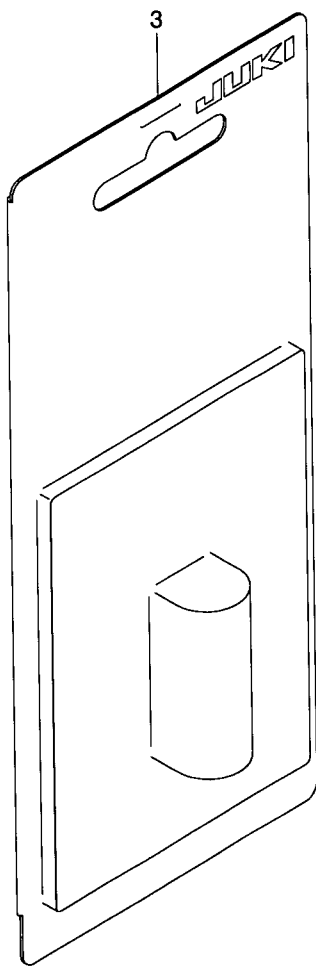
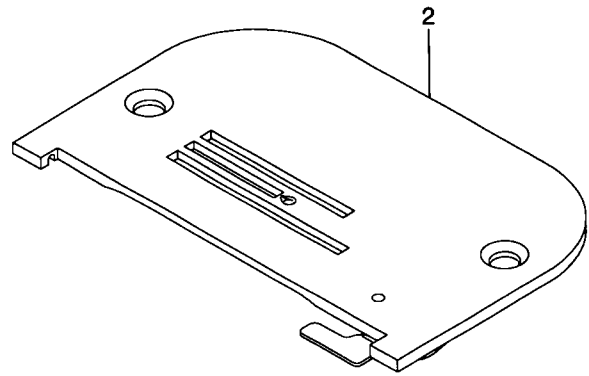
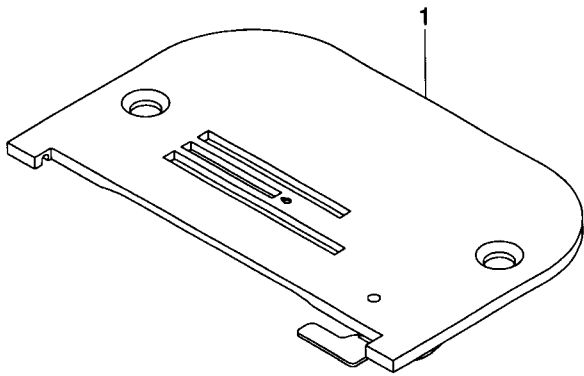
10. ACCESSORIES AND PACKING COMPONENTS



NO.	NOTE	PART NO.	DESCRIPTION	Qty
1		A9121-E98-ZA0	ACCESSORY BAG ASM.	1
2		A9110-700-000	SCREWDRIVER	(1)
3		A9107-102-000	SCREWDRIVER(SMALL)	(1)
4		A9137-956-000	CLEANING BRUSH	(1)
5		A9117-007-000	BOBBIN	(4)
6		A9104-090-000	HEMMER	(1)
7		A1150-090-000	SPOOL CAP	(1)
8		A9102-062-BA0	OILER	(1)
9		A9133-090-000	ZIPPER FOOT	(1)
10		MHA1M-111422	NEEDLE(HA×1#11, #14)	(1)
11		A9121-503-000	ACCESSORY BAG	(1)
12		A9150-E98-ZA0	UPPER FEED ATTACHMENT ASM.	(1)
13		A5133-E98-ZA0A	QUILTER'S FOOT ASM.	(1)
14		A5140-E98-ZA0	COMPENSATING FOOT ASM.	(1)
15		A8001-E98-ZB0	PEDAL SWITCH CASE MAS. ASM.	1
16		A7102-E98-ZA0	CONTROLLER ASM.	(1)
17		A7310-E98-Z00	EXTERNAL THREAD TRIMMER SWITCH	(1)
18		HX-0012300-0A	CORD HOLDER	(1)
19		A8005-E98-Z00	CORD PROTECTION TUBE	(1)
20		SL-5030631-SF	SCREW	(1)
21		A8001-096-0A0	PEDAL SWITCH CASE ASM.	(1)
22		A8001-096-000	PEDAL SWITCH CASE	(1)
23		A1161-008-000A	RUBBER SEAT	(4)
24		WP-0430801-SC	WASHER	(4)
25		ST-5031051-SR	SCREW	(5)
26		A8002-096-000	PEDAL SWITCH INSTALLING PLATE	(1)
27		A6071-776-ZA0A	POWER CORD SET ASM. (UL)	(1)
28		A8006-096-000	PEDAL SWITCH CASE ASM. PACKING BAG	1
29		A8401-090-000A	MAIN BODY CASE	1
30		A9300-E98-Z00A	CARTON CASE(HEAD)	1
31		A9303-E98-Z00	INSTRUCTION MANUAL	1
32		A9402-D98-0A0	SET PLATE ASM.	1
33		A9301-090-000A	FRONT STYROFOAM	1
34		A9302-090-000A	REAR STYROFOAM	1
35		J0231-082-A0B	HEAD VINIL SHEET	1
36		A8501-E98-ZJ0	AUXILIARY TABLE PACKING MAS. ASM.	1
37		A9401-D98-0AA	AUXILIARY TABLE SUPPORT PLATE, LEFT ASM.	(1)
38		A9400-D98-0AA	AUXILIARY TABLE SUPPORT PLATE, RIGHT ASM.	(1)
39		A9404-090-000	AUXILIARY TABLE POLYETHYLENE BAG	(1)
40		A8501-E98-ZB0	AUXILIARY TABLE MAS. ASM.	(1)
41		A9406-D98-000	KNEE PAD	(1)
42		A9405-D98-000	KNEE PAD FIXING TAPE	(3)
43		A3425-090-0A0	KNEE PAD ASM.	(1)
44		A9405-090-000	KNEE PAD METAL FITTING BUFFER	(1)
45		A8501-E98-ZA0	AUXILIARY TABLE ASM.	(1)
46		A8501-E98-Z00	AUXILIARY TABLE	(1)
47		A8502-090-000	AUXILIARY TABLE CLAW A	(1)
48		ST-0751651-SN	SCREW	(2)
49		A8503-090-000	AUXILIARY TABLE CLAW B	(1)
50		A8504-090-000	KNEE PAD RETAINER	(2)
51		A8505-090-0A0	AUXILIARY TABLE STAND ASM.	(2)
52		ST-5041211-SN	SCREW	(8)
53		PS-0200142-KH	PIN	(2)
54		A8508-D98-000	BOBBIN LID	(1)
55		SL-5030635-SN	SCREW	(2)
56		A8509-D98-000	LID INSTALLING PLATE	(1)
57		ST-5041211-SN	SCREW	(2)
58		A8510-D98-000	HOOK SUPPORT BASE	(1)
59		ST-5041211-SN	SCREW	(2)
60		ST-5041211-SN	SCREW	(6)

PERIOD OF SUPPLY OF PACKING MATERIALS IS 6 MONTHS AFTER COMPLETION OF PRODUCTION.

11. SEPARATELY-SOLD COMPONENTS



NO.	NOTE	PART NO.	DESCRIPTION	Qty
1		A1109-090-AA0	NEEDLE PLATE (FOR THIN MATERIALS)	1
2		A1109-090-BA0	NEEDLE PLATE (FOR THICK MATERIALS)	1
3		A9812-E98-ZA0	LAMP BLISTER PACK ASM.	1
4		A9813-E98-ZA0	PRESSER FOOT FOR THIN MATERIALS ASM.	1

JUKI CORPORATION
INTERNATIONAL SALES DIVISION
8-2-1, KOKURYO-CHO,
CHOFU-SHI, TOKYO 182-8655
JAPAN

PHONE : 03(3480)5034
FAX : 03(3480)5037

Copyright © 2002 JUKI CORP.
All rights reserved throughout the world.

02.3 Printed in Japan