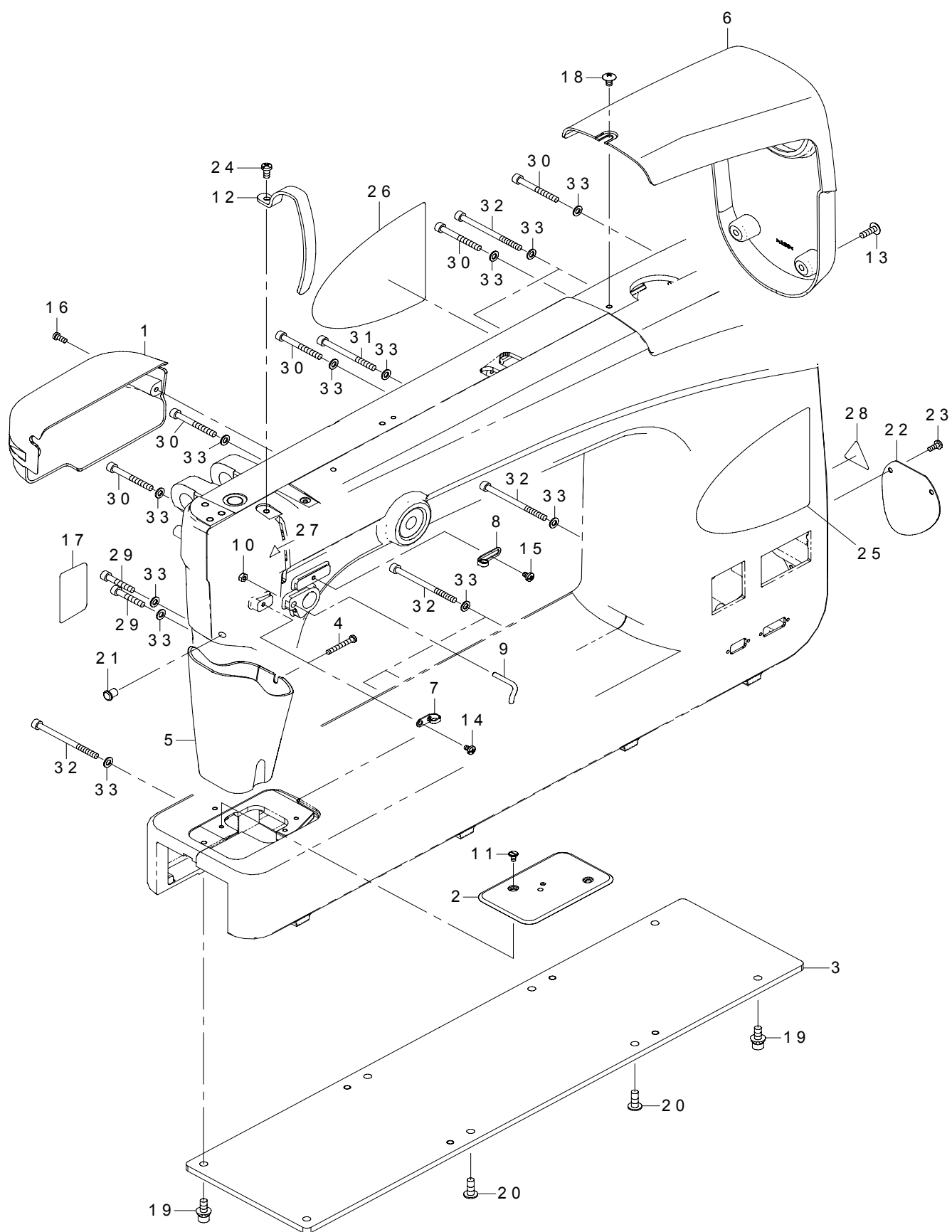


# ***PARTS LIST***

***PARTS LIST***

# 1. FRAME & MISCELLANEOUS COVER COMPONENTS

頭部・外装関係

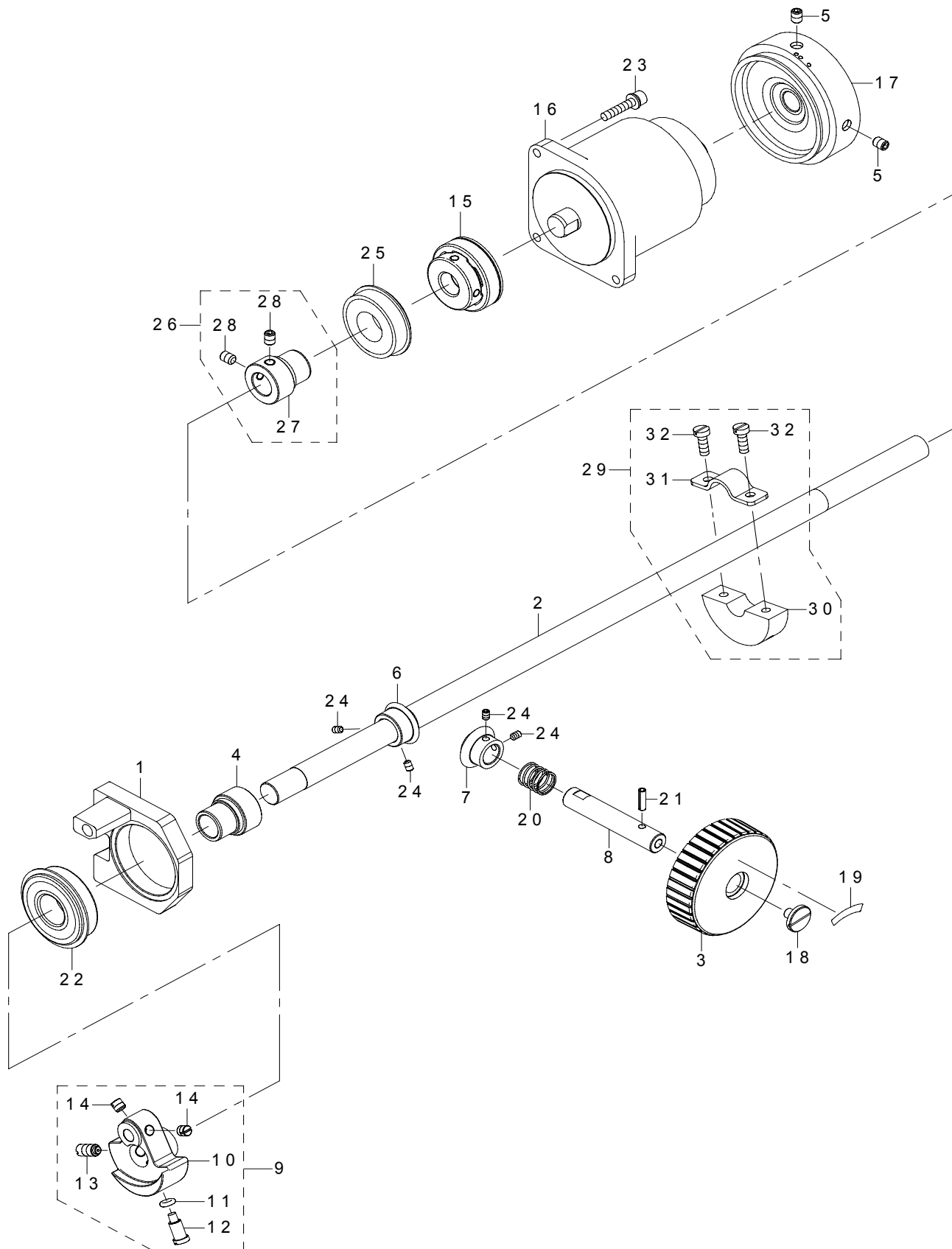


| REF.NO | NOTE | PART NO       | DESCRIPTION                | 品名                     | Qty |
|--------|------|---------------|----------------------------|------------------------|-----|
| 1      |      | 401-24949     | PRESSER_MECHA_COVER        | 押え調節カバー                | 1   |
| 2      |      | 401-24969     | THROAT_PLATE               | 針板                     | 1   |
| 3      |      | 401-24970     | BOTTOM_COVER               | 底面カバー                  | 1   |
| 4      |      | SM-4043050-SC | SCREW M4X0.7 L=30          | なべ小ねじ M4 X 0.7 L = 30  | 1   |
| 5      |      | 401-24948     | LED_COVER                  | LED カバー                | 1   |
| 6      |      | 401-24947     | MTOR_COVER                 | モーターカバー                | 1   |
| 7      |      | 229-20607     | ARM THREAD GUIDE B         | アーム糸案内 B               | 1   |
| 8      |      | 236-26104     | ARM THREAD GUIDE A         | アーム糸案内 A               | 1   |
| 9      |      | 400-25414     | L_SHAPED_THREAD_GUIDE      | L 形糸案内                 | 1   |
| 10     |      | NM-6040000-SN | NUT M4                     | 六角ナット M4               | 1   |
| 11     |      | A1138-776-000 | SCREW                      | 止めねじ                   | 2   |
| 12     |      | 401-32239     | THREAD_TAKE_UP_LEVER_COVER | 天秤カバー                  | 1   |
| 13     |      | SM-0051601-SC | SCREW M5 L=16              | トラスねじ M5 L = 16        | 2   |
| 14     |      | SM-5040655-SN | SCREW                      | バインドねじ                 | 1   |
| 15     |      | SM-5040655-SN | SCREW                      | バインドねじ                 | 1   |
| 16     |      | SM-4041001-SN | SCREW M4X0.7 L=10          | なべ小ねじ M4 X 0.7 L = 10  | 2   |
| 17     |      | 401-32095     | FRAME L SEAL               | 目隠しシール                 | 2   |
| 18     |      | SM-0050801-SC | SCREW                      | トラスねじ M5 L = 8         | 1   |
| 19     |      | SL-6061692-TN | BOLT                       | 座金付き六角穴ボルト             | 4   |
| 20     |      | SM-0061601-SC | SCREW                      | トラスねじ M6 L = 16        | 4   |
| 21     |      | 165-57704     | ATTACHMENT                 | ワークアタッチメント             | 1   |
| 22     |      | 401-32116     | LOWER SHAFT HOLE COVER     | 下軸穴カバー                 | 1   |
| 23     |      | SM-5040655-SN | SCREW                      | バインドねじ                 | 2   |
| 24     |      | SM-4051055-SP | SCREW                      | なべねじ                   | 1   |
| 25     |      | 401-25756     | EMBLEM_R                   | 型式銘版右                  | 1   |
| 26     |      | 401-25755     | EMBLEM_L                   | 型式銘版左                  | 1   |
| 27     |      | CM-3002000-01 | ATTENTION SEAL             | 指怪我注意シール (16)          | 1   |
| 28     |      | CM-3001000-01 | LABEL                      | 危険電圧警告シール (31.5)       | 1   |
| 29     |      | SM-6053002-TN | SCREW M5X0.8 L=30          | 六角穴ボルト M5 X 0.8 L = 30 | 2   |
| 30     |      | SM-6054502-TN | SCREW M5 L=45              | 六角穴ボルト M5 L = 45       | 5   |
| 31     |      | SM-6056052-TN | SCREW M5 L=60              | 六角穴ボルト M5 L = 60       | 1   |
| 32     |      | SM-6057052-TN | HEXAGONAL-HOLE BOLT        | 六角穴ボルト                 | 7   |
| 33     |      | WP-0531000-SC | WASHER 5.3X10X1            | 平座金 5.3 X 10 X 1       | 15  |

PARTS LIST

## 2. UPPER SHAFT COMPONENTS

上軸関係

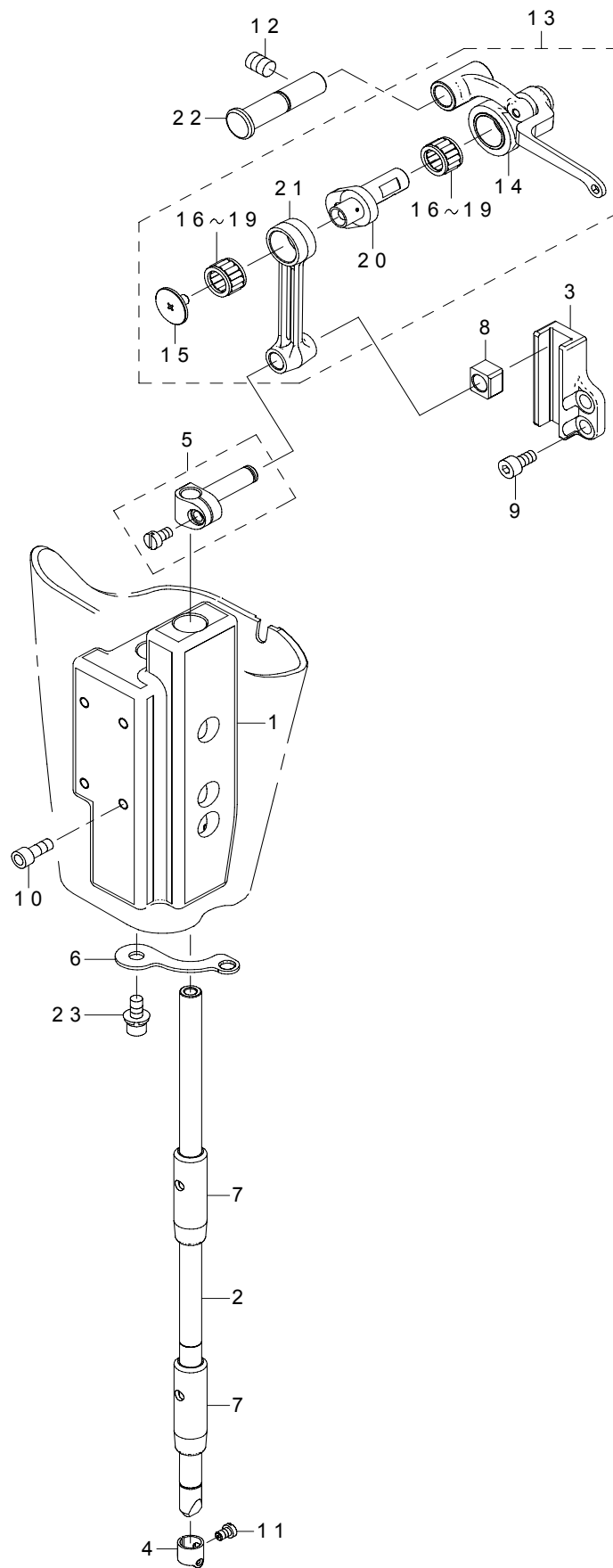


| REF.NO | NOTE | PART NO         | DESCRIPTION                    | 品名                | Qty |
|--------|------|-----------------|--------------------------------|-------------------|-----|
| 1      |      | 401-24952       | MAIN_SHAFT_F_BLOCK             | 上軸前メタル土台          | 1   |
| 2      |      | 401-24962       | MAIN_SHAFT                     | 上軸                | 1   |
| 3      |      | 401-24986       | PULLEY                         | 手元プーリー            | 1   |
| 4      |      | 236-05207       | MAIN SHAFT BEARING SUPPORT     | 上軸前ベアリング受         | 1   |
| 5      |      | SM-80608A2-TP   | SCREW M6 L=8                   | 六角穴付き止めねじ M6 L=8  | 2   |
| 6      |      | 400-06515       | GEAR_A                         | ギア A              | 1   |
| 7      |      | 400-06516       | GEAR_B                         | ギア B              | 1   |
| 8      |      | 400-44053       | PULLEY SHAFT                   | 手元プーリー軸           | 1   |
| 9      |      | 401-06606       | COUNTER_WEIGHT_ASM.            | 釣合錘 (組)           | 1   |
| 10     |      | 401-06607       | COUNTER_WEIGHT                 | 釣合錘               | (1) |
| 11     |      | RO-0442401-00   | RUBBER RING                    | O リング             | (1) |
| 12     |      | SS-7681650-TP   | SCREW 9/32-28 L=16             | 丸平ねじ 9/32-28 L=16 | (1) |
| 13     |      | SS-8681650-TP   | SCREW 9/32-28 L=16             | 止めねじ 9/32-28 L=16 | (1) |
| 14     |      | SS-8660610-TP   | SCREW 1/4-40 L=6               | 止めねじ 1/4-40 L=6   | (2) |
| 15     |      | 401-11025       | COUPLING_ASM.                  | カップリング組           | 1   |
| 16     |      | 401-11203       | SERVO MOTOR                    | サーボモータ            | 1   |
| 17     |      | 401-11872       | HAND_PULLEY                    | はずみ車              | 1   |
| 18     |      | A1230-500-000-A | HANDWHEEL SETSCREW             | はずみ車止めねじ          | 1   |
| 19     |      | B1144-210-000   | REVOLVING DIRECTION LABEL      | 回転方向ラベル           | 1   |
| 20     |      | 112-33400       | SPRING                         | ワイパマグネットばね        | 1   |
| 21     |      | PS-0400142-KH   | SPRING PIN 4X14                | スプリングピン 4 X 14    | 1   |
| 22     |      | SB-1200027-00   | BEARING                        | ころがり軸受 (前)        | 1   |
| 23     |      | SL-6052592-TN   | BOLT                           | 座金付き六角穴ボルト        | 3   |
| 24     |      | SM-8040612-TP   | SCREW M4 L=6                   | 止めねじ M4 L=6       | 4   |
| 25     |      | SB-1200018-00   | BEARING                        | ころがり軸受 (後)        | 1   |
| 26     |      | 400-44857       | FRONT BEARING SUPPORT ASM.     | 上軸前ベアリング受組        | 1   |
| 27     |      | 236-05207       | FRONT BEARING SUPPORT          | 上軸前ベアリング受         | (1) |
| 28     |      | SM-80608A2-TP   | SCREW M6 L=8                   | 六角穴付き止めねじ M6 L=8  | (2) |
| 29     |      | 400-10437       | CRANK_BALANCER_ASM             | バランサー組            | 1   |
| 30     |      | 400-10438       | CRANK_BALANCER                 | バランサー             | (1) |
| 31     |      | 400-10439       | CRANK_BALANCER_FIX_PLATE       | バランサー止め板          | (1) |
| 32     |      | 400-10440       | CRANK_BALANCER_FIX_PLATE_SCREW | バランサー止めねじ         | (2) |

PARTS LIST

### 3. NEEDLE BAR & THREAD TAKE UP COMPONENTS

針棒・天秤關係

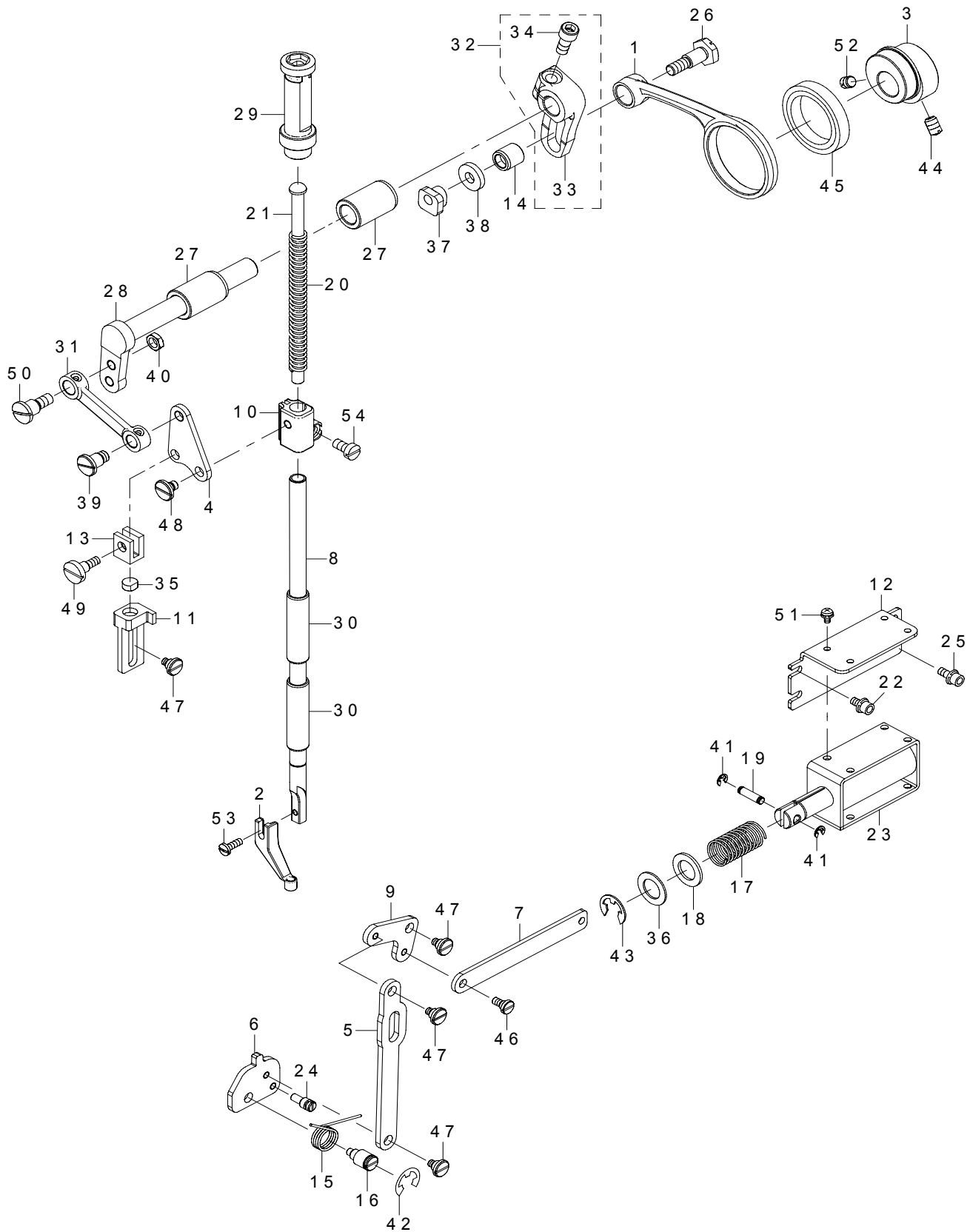


| REF.NO | NOTE | PART NO       | DESCRIPTION                | 品名                   | Qty |
|--------|------|---------------|----------------------------|----------------------|-----|
| 1      |      | 401-24954     | NEEDLE_BAR_BLOCK           | 針棒土台                 | 1   |
| 2      |      | 401-24989     | ASSY NEEDLE BAR            | 針棒 (結合)              | 1   |
| 3      |      | 113-49909     | ROLLER GUIDE BRACKET       | コ口案内台                | 1   |
| 4      |      | 229-06309     | NEEDLE BAR THREAD GUIDE    | 針棒糸掛け                | 1   |
| 5      |      | 229-06457     | NEEDLE BAR HOLDER ASM.     | 針棒抱き (組)             | 1   |
| 6      |      | 401-30712     | NEEDLE BAR THREAD GUIDE    | 針棒糸案内                | 1   |
| 7      |      | 400-86605     | NEEDLE_BAR_LOWER_METAL_MD  | 針棒下メタル_MD            | 2   |
| 8      |      | B1414-555-000 | SLIDE BLOCK                | 針棒抱き案内コ口             | 1   |
| 9      |      | SM-6041002-TP | SCREW M4 L=10              | 六角穴ボルト M4 X 0.7 L=10 | 2   |
| 10     |      | SM-6041002-TP | SCREW M4 L=10              | 六角穴ボルト M4 X 0.7 L=10 | 4   |
| 11     |      | SS-7080510-TP | SCREW 1/8-44 L=4.5         | 丸平ねじ 1/8-44 L=4.5    | 1   |
| 12     |      | SM-80608A2-TP | SCREW M6 L=8               | 六角穴付き止めねじ M6 L=8     | 4   |
| 13     |      | 114-03979     | THREAD TAKE-UP LEVER ASM.  | リンク天秤 (結合)           | 1   |
| 14     |      | 114-03961     | THREAD TAKE-UP LEVER ASM.  | リンク天秤 (組)            | (1) |
| 15     |      | 229-18304     | BALANCE CRANK LEFT SCREW   | 天秤クランク左ねじ            | (1) |
| 16     | #01  | 229-18403     | BALANCE NEEDLE BEARING A   | 天秤ニードル軸受 A           | (2) |
| 17     | #01  | 229-18502     | BALANCE NEEDLE BEARING B   | 天秤ニードル軸受 B           | (2) |
| 18     | #01  | 229-18601     | BALANCE NEEDLE BEARING C   | 天秤ニードル軸受 C           | (2) |
| 19     | #01  | 229-18700     | BALANCE NEEDLE BEARING D   | 天秤ニードル軸受 D           | (2) |
| 20     |      | 401-09126     | NEEDLE_BAR_CRANK_H         | 針棒クランク H             | (1) |
| 21     |      | 229-06606     | NEEDLE BAR CRANK ROD       | 針棒クランクロッド            | (1) |
| 22     |      | 229-19500     | THREAD TAKE-UP CRANK SHAFT | 天秤支え軸                | 1   |
| 23     |      | SL-6041042-TN | BOLT                       | 座金付き六角穴ボルト           | 1   |
|        |      | NOTE(注記)      | #01....SELECTIVE PARTS     | 選択部品                 |     |

PARTS LIST

#### 4. PRESSER COMPONENTS

押え関係





| REF.NO | NOTE | PART NO       | DESCRIPTION                   | 品名                  | Qty |
|--------|------|---------------|-------------------------------|---------------------|-----|
| 1      |      | 401-24951     | UPPER_FEED_CAM_ROD            | 上下偏心カムロッド           | 1   |
| 2      |      | 401-25767     | PRESSER_FOOT                  | 押え足                 | 1   |
| 3      |      | 401-25761     | ECCENTRIC CAM                 | 押え偏心カム              | 1   |
| 4      |      | 401-24979     | PRESSER_CRANK_LINK            | 押さえ三角てこ             | 1   |
| 5      |      | 401-24981     | RETURN_LINK_B                 | 押え棒戻しリンク            | 1   |
| 6      |      | 401-24983     | RETURN_CAM                    | 押え棒戻しカム             | 1   |
| 7      |      | 401-24984     | PRESSER_SOLENOID_LINK         | 押え棒戻しソレノイドリンク       | 1   |
| 8      |      | 401-24988     | ASSY PRESSER BAR              | 押え棒 (結合)            | 1   |
| 9      |      | 401-24990     | RETURN_LINK                   | 押さえ戻し L リンク         | 1   |
| 10     |      | 401-24991     | PRESSER_BAR_GUIDE_BLOCK       | 押さえ棒抱き              | 1   |
| 11     |      | 401-24992     | PRESSER_BAR_BRACKET_GUIDE     | 押え棒抱きガイド            | 1   |
| 12     |      | 401-24993     | PRESSER_SOL_BASE              | 押え棒ソレノイド取付板         | 1   |
| 13     |      | 401-24994     | PRESSER LINK BLOCK            | 押え三角コロ              | 1   |
| 14     |      | 401-24995     | CAM_ROD_BUSH                  | カムロッド軸受             | 1   |
| 15     |      | 401-25002     | RETURN_SPRING                 | カム戻しばね              | 1   |
| 16     |      | 401-25003     | RETURN_SPRING_PIN             | 戻しばね支点              | 1   |
| 17     |      | 112-33400     | SPRING                        | ワイパマグネットばね          | 1   |
| 18     |      | 112-34408     | SOLENOID RUBBER               | ソレノイドゴム             | 1   |
| 19     |      | 112-34507     | PLUNGER CONNECTING PIN        | プランジャー連結ピン          | 1   |
| 20     |      | 229-07406     | PRESSER SPRING                | 押え調節ばね              | 1   |
| 21     |      | 400-23631     | PRESSER GUIDE BAR             | 中押え案内棒              | 1   |
| 22     |      | SL-6040842-TN | SCREW M4 L=8                  | 座金付き六角穴ボルト          | 2   |
| 23     |      | 401-26078     | DISH RISING SOLENOID          | 糸緩めソレノイド            | 1   |
| 24     |      | 400-11926     | SPRING_HOOK                   | ばね掛け                | 1   |
| 25     |      | SL-6041042-TN | BOLT                          | 座金付き六角穴ボルト          | 2   |
| 26     |      | 400-21579     | HINGE SCREW                   | 段ねじ                 | 1   |
| 27     |      | 400-21625     | BUSHING                       | 上送り軸メタル             | 2   |
| 28     |      | 401-31492     | UPPER FEED DRIVING SHAFT      | 上送り軸                | 1   |
| 29     |      | 400-37359     | PRESSER SPRING REGURATOR ASM. | 押え調節ねじ (組)          | 1   |
| 30     |      | 400-78133     | PRESSER_BUSHING               | 中押え棒メタル             | 2   |
| 31     |      | 401-01953     | CONNECTING_LINK               | 上下めがね               | 1   |
| 32     |      | 401-02601     | UPPER_FEED_SPRING_ROD_ASM.    | 上送り腕 (組)            | 1   |
| 33     |      | 401-01978     | UPPER_FEED_SPRING_ROD         | 上送り腕                | (1) |
| 34     |      | SS-6151412-TP | SCREW 15/64-28 L=14           | 六角穴ボルト 15/64-28     | (1) |
| 35     |      | B1432-761-000 | SWING ARM STOPPER RUBBER      | ストッパーブッシュ           | 1   |
| 36     |      | WP-1221016-SP | WASHER                        | 平座金                 | 1   |
| 37     |      | B3009-141-H0A | NUT                           | カムロット段ねじナット         | 1   |
| 38     |      | B3010-141-H00 | WASHER                        | カムロット段ねじ座金          | 1   |
| 39     |      | B3015-141-H00 | HINGE SCREW                   | L 板ロッド段ねじ           | 1   |
| 40     |      | NS-6150310-SP | NUT 15/64-28                  | 六角ナット 15/64-28      | 1   |
| 41     |      | RE-0300000-K0 | E-RING 3                      | E 形止め輪 3            | 2   |
| 42     |      | RE-0800000-K0 | E-SHAPED SNAP RING (8MM)      | E 形止め輪 8            | 1   |
| 43     |      | RE-0900000-K0 | E-RING 9                      | E 形止め輪 9            | 1   |
| 44     |      | SS-8661030-SP | SCREW 1/4-40 L=10             | 止めねじ 1/4-40 L=10    | 1   |
| 45     |      | SB-1300002-00 | BEARING                       | ころがり軸受              | 1   |
| 46     |      | SD-0500256-TH | SHOULDER SCREW                | 段ねじ D=5 H=2.5       | 1   |
| 47     |      | SD-0600326-TP | SHOULDER SCREW                | 段ねじ D=6 H=3.2       | 5   |
| 48     |      | SD-0600327-TP | SHOULDER SCREW                | 段ねじ D=6 H=3.2       | 1   |
| 49     |      | SD-0600651-TP | HINGE SCREW                   | 段ねじ D=6 H=6.5       | 1   |
| 50     |      | SD-0850751-SP | HINGE SCREW D= 8.50 H= 7.5    | 段ねじ D=8.5 H=7.5     | 1   |
| 51     |      | SL-4030641-SE | SCREW                         | 座金付きねじ              | 4   |
| 52     |      | SS-8660610-TP | SCREW 1/4-40 L=6              | 止めねじ 1/4-40 L=6     | 1   |
| 53     |      | SS-7091110-TP | SCREW 9/64-40 L=10.5          | 丸平ねじ 9/64-40 L=10.5 | 1   |
| 54     |      | SM-6051400-SP | SCREW                         | 平ねじ                 | 1   |

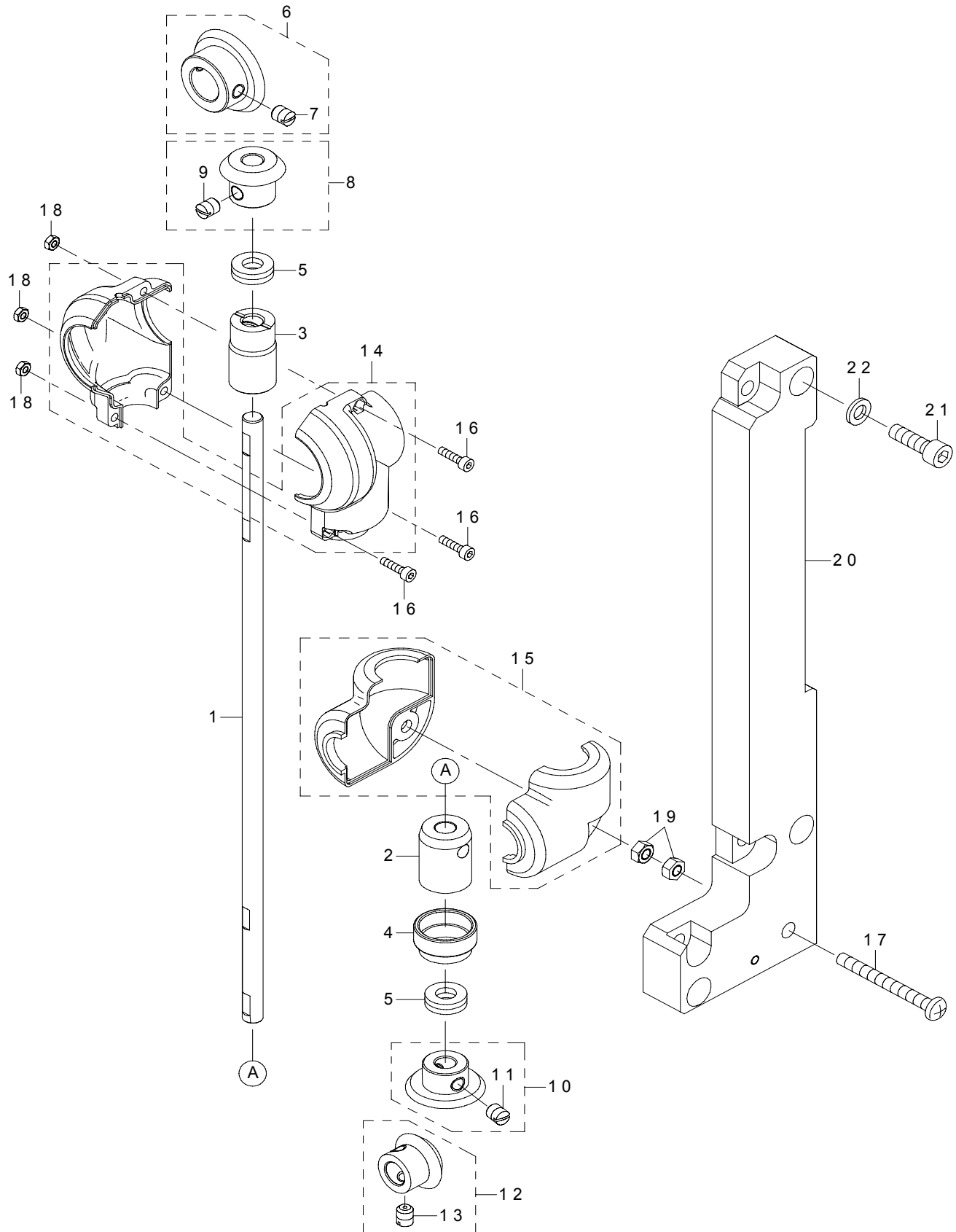


| REF.NO | NOTE | PART NO       | DESCRIPTION         | 品名             | Qty |
|--------|------|---------------|---------------------|----------------|-----|
| 1      |      | 401-24953     | LOWER_SHFT_F_BLOCK  | 下軸前メタル土台       | 1   |
| 2      |      | 401-24955     | POSITIONING_FINGER  | 内金押さえ          | 1   |
| 3      |      | 401-30726     | LOWER_SHAFT_BUSH    | 下軸後メタル         | 1   |
| 4      |      | 401-24963     | LOWER_SHAFT         | 下軸             | 1   |
| 5      |      | B1837-201-SA0 | BOBBIN CASE ASM.    | ボビンケース組        | 1   |
| 6      |      | D1830-560-EA0 | HOOK ASM.           | 給油釜組           | 1   |
| 7      |      | SM-4050855-SP | SCREW               | なべねじ M 5 L = 8 | 1   |
| 8      |      | D9117-141-E00 | BOBBIN              | アルミボビン         | 1   |
| 9      |      | 229-16555     | OIL SEAL SCREW ASM. | 下軸前止めねじ組       | 1   |
| 10     |      | 229-16506     | SET SCREW           | 下軸前止めねじ        | (1) |
| 11     |      | 110-15906     | OIL WICK            | 下軸前止めねじ油芯      | (1) |
| 12     |      | 400-04188     | BEARING_SUPPORT     | ベアリング受         | 1   |
| 13     |      | SM-8050512-TP | SCREW               | 止めねじ M 5 L = 5 | 2   |
| 14     |      | SB-1120016-00 | BEARING             | ころがり軸受 (後)     | 2   |

PARTS LIST

## 6. UPRIGHT SHAFT COMPONENTS

立軸関係

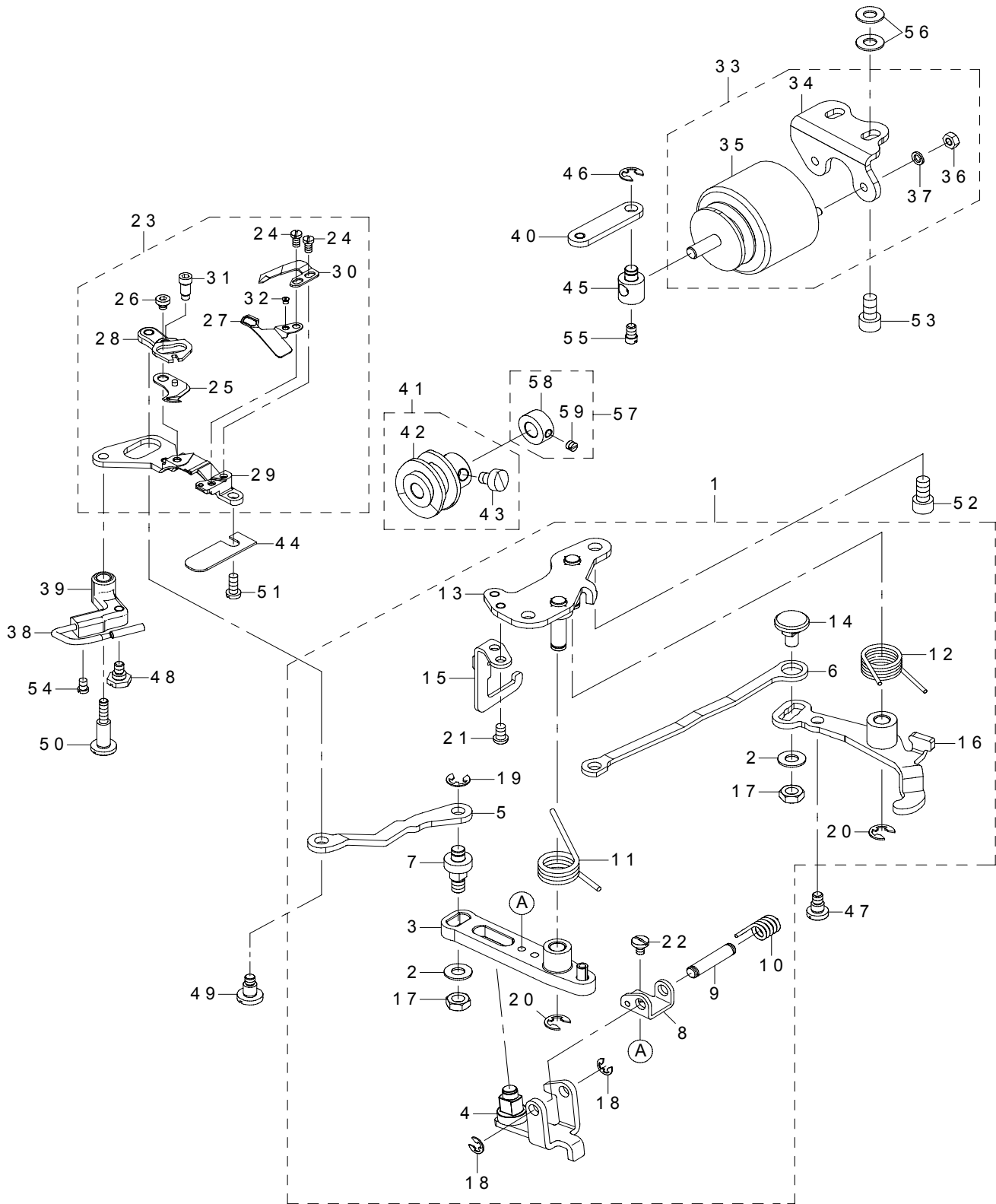


| REF.NO | NOTE | PART NO       | DESCRIPTION                  | 品名                 | Qty |
|--------|------|---------------|------------------------------|--------------------|-----|
| 1      |      | 401-24964     | UPRIGHT_SHAFT                | 立軸                 | 1   |
| 2      |      | 401-30709     | UPRIGHT SHAFT BUSHING, LOWER | 立軸下メタル             | 1   |
| 3      |      | 401-30710     | UPRIGHT SHAFT BUSHING, UPPER | 立軸上メタル             | 1   |
| 4      |      | 401-30833     | GEAR COVER RING              | ギアカバーリング           | 1   |
| 5      |      | SB-4080001-00 | BEARING                      | ころがり軸受             | 2   |
| 6      |      | 400-90002     | UPPER LARGE BEVEL GEAR ASM.  | 上傘歯車大 (組)          | 1   |
| 7      |      | SS-8660810-TP | SCREW 1/4-40 L=8             | 止めねじ 1/4-40 L=8    | (2) |
| 8      |      | 400-90003     | UPPER SMALL BEVEL GEAR ASM.  | 上傘歯車小 (組)          | 1   |
| 9      |      | SS-8660810-TP | SCREW 1/4-40 L=8             | 止めねじ 1/4-40 L=8    | (2) |
| 10     |      | 400-90004     | LOWER LARGE BEVEL GEAR ASM.  | 下傘歯車大 (組)          | 1   |
| 11     |      | SS-8660810-TP | SCREW 1/4-40 L=8             | 止めねじ 1/4-40 L=8    | (2) |
| 12     |      | 400-90005     | LOWER SMALL BEVEL GEAR ASM.  | 下傘歯車小 (組)          | 1   |
| 13     |      | SS-8660810-TP | SCREW 1/4-40 L=8             | 止めねじ 1/4-40 L=8    | (2) |
| 14     |      | B1305-271-0A0 | GEAR CASE ASM. UPPER         | 上歯車ケース (組)         | 1   |
| 15     |      | B1307-271-0A0 | PINION CASE ASM.             | 下歯車ケース (組)         | 1   |
| 16     |      | SM-6031602-TP | SCREW                        | 六角穴ボルト             | 3   |
| 17     |      | SM-4055001-SF | SCREW M5 L=50                | なべねじ M5 X 0.8 L=50 | 1   |
| 18     |      | NM-6030002-SC | NUT M3X0.5 TYPE2             | 六角ナット M3 X 0.5 2種  | 3   |
| 19     |      | NM-6050001-SC | NUT M5X0.8 TYPE1             | 六角ナット M5 X 0.8 1種  | 2   |
| 20     |      | 401-30865     | SUPPORT ARM                  | 補助腕                | 1   |
| 21     |      | SM-6062002-TP | SCREW M6 L=20                | 六角穴ボルト M6 L=20     | 6   |
| 22     |      | WP-0651056-SD | WASHER 6.5X11X1              | 平座金 6.5 X 11 X 1   | 6   |

PARTS LIST

# 7. THREAD TRIMMER COMPONENTS

糸切り関係

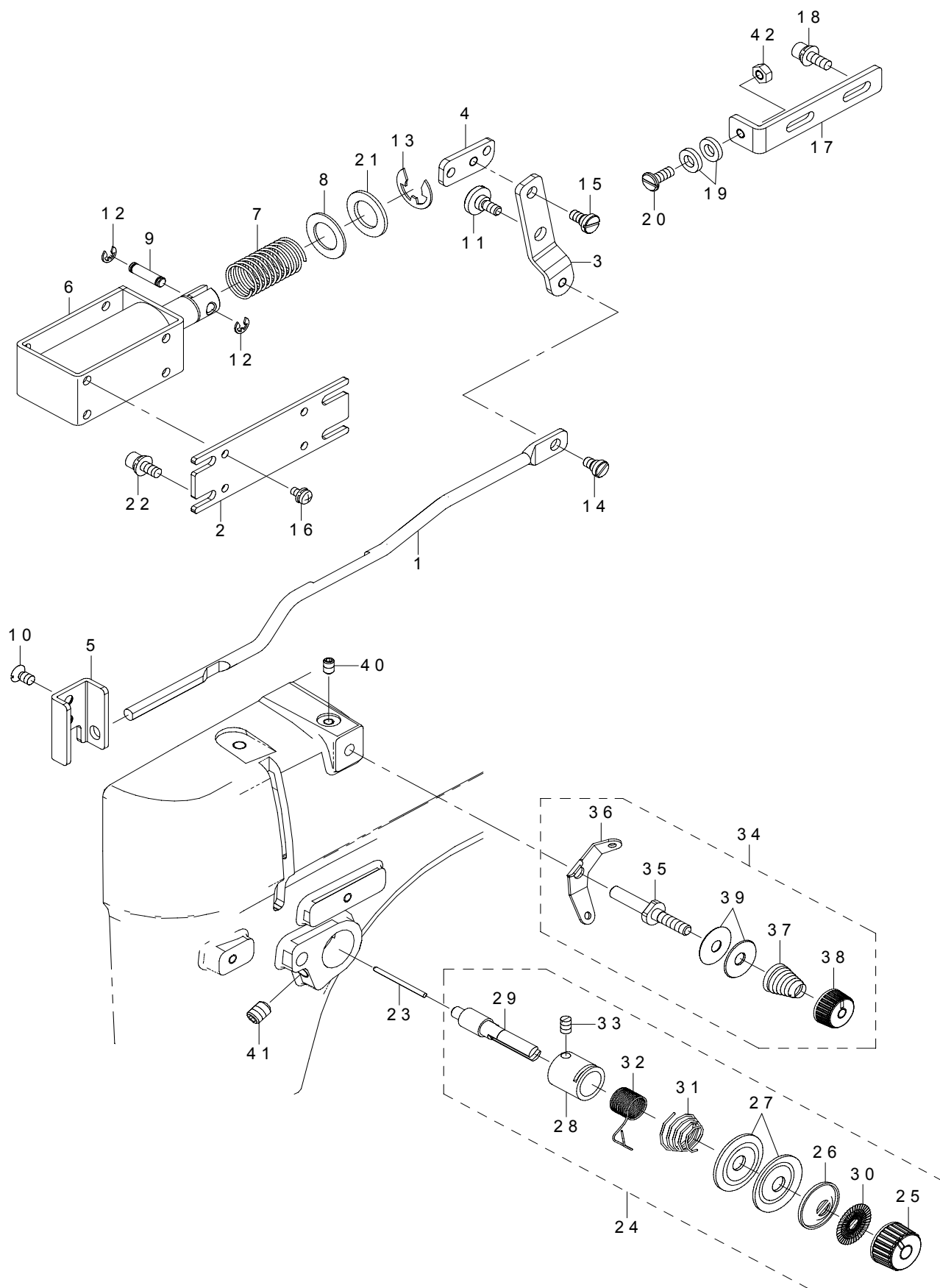


| REF.NO | NOTE | PART NO       | DESCRIPTION                  | 品名                  | Qty |
|--------|------|---------------|------------------------------|---------------------|-----|
| 1      |      | 401-24999     | THREAD TRIMMER DRIVING UNIT  | 糸切駆動ユニット            | 1   |
| 2      |      | WP-0621016-SH | WASHER                       | 平座金                 | (2) |
| 3      |      | 110-40854     | KNIFE DRIVING ARM ASM.       | メス駆動(組)             | (1) |
| 4      |      | 110-40953     | ROLLER ARM ASM.              | コロ腕(組)              | (1) |
| 5      |      | 114-07103     | MOVING KNIFE LINK            | 動メスリンク              | (1) |
| 6      |      | 114-07202     | PICKER LINK                  | ピッカーリンク             | (1) |
| 7      |      | 229-48400     | MOVING KNIFE LINK PIN        | 動メスリンクピン            | (1) |
| 8      |      | 229-49002     | ROLLER ARM SEAT              | コロ腕座                | (1) |
| 9      |      | 229-49101     | ROLLER FULCRUM SHAFT         | コロ支点軸               | (1) |
| 10     |      | 229-49200     | ROLLER RETURN SPRING         | コロ戻しばね              | (1) |
| 11     |      | 229-49309     | KNIFE RETURN SPRING B        | メス戻しばね B            | (1) |
| 12     |      | 229-49408     | CLUTCH SPRING                | クラッチばね              | (1) |
| 13     |      | 229-49754     | BASE PLATE ASM.              | ベース板(組)             | (1) |
| 14     |      | 229-50000     | PICKER LINK PIN              | ピッカーリンクピン           | (1) |
| 15     |      | 229-50703     | DRIVING ARM STOPPER          | 駆動腕ストッパー            | (1) |
| 16     |      | 401-31898     | CLUTCH PLATE ASM.            | クラッチ板(組)            | (1) |
| 17     |      | NS-6150430-SP | NUT 15/64-28                 | 六角ナット 15/64-28      | (2) |
| 18     |      | RE-0400000-K0 | E-RING 4                     | E 形止め輪 4            | (2) |
| 19     |      | RE-0500000-K0 | E-RING                       | E 形止め輪 5            | (1) |
| 20     |      | RE-0600000-K0 | E-RING 6                     | E 形止め輪 6            | (2) |
| 21     |      | SS-4110715-SP | SCREW 11/64-40 L=7           | なべねじ 11/64-40 L=7   | (2) |
| 22     |      | SS-7090610-SP | SCREW 9/64-40 L=6            | 丸平ねじ 9/64-40 L=6    | (1) |
| 23     |      | 401-25000     | KNIFE_UNIT                   | メスユニット              | 1   |
| 24     |      | SS-4080620-TP | SCREW 1/8-44 L=6             | なべねじ 1/8-44 L=6     | (2) |
| 25     |      | 110-40052     | MOVING KNIFE ASM.            | 動メス(組)              | (1) |
| 26     |      | 110-40409     | MOVING KNIFE HINGE SCREW     | 動メス段ねじ              | (1) |
| 27     |      | 229-47808     | KNIFE THREAD GUIDE           | メス糸案内               | (1) |
| 28     |      | 229-48202     | KNIFE BRANCH                 | メスニ又                | (1) |
| 29     |      | 401-24996     | KNIFE_MOUNTING_BASE          | メス取付台               | (1) |
| 30     |      | D2406-555-D0H | COUNTER KNIFE                | 固定メス                | (1) |
| 31     |      | SD-0460703-TP | HINGE SCREW D=4.6 H=7        | 段ねじ D=4.6 H=7       | (1) |
| 32     |      | SS-2060210-SP | SCREW 3/32-56 L=2.3          | 丸皿ねじ 3/32-56 L=2.3  | (1) |
| 33     |      | 401-24997     | THREAD TRIMMER SOLENOID ASM. | 糸切りソレノイド(組)         | 1   |
| 34     |      | 114-07608     | SOLENOID BASE                | ソレノイド台              | (1) |
| 35     |      | 401-26101     | THREAD TRIMMER SOLENOID      | 糸切りソレノイド            | (1) |
| 36     |      | NM-6040001-SE | NUT M4                       | 六角ナット               | (2) |
| 37     |      | WS-0410002-KR | SPRING WASHER, M4            | ばね座金 M4             | (2) |
| 38     |      | 229-50356     | HOOK THREAD PRESSER ASM.     | 釜糸押え(組)             | 1   |
| 39     |      | 114-08606     | PICKER ARM                   | ピッカー腕               | 1   |
| 40     |      | 229-49903     | CLUTCH LINK                  | クラッチリンク             | 1   |
| 41     |      | 401-33647     | THREAD TRIMMER CAM ASM.      | 糸切りカム(組)            | 1   |
| 42     |      | 401-30727     | THREAD TRIMMER CAM           | 糸切りカム               | (1) |
| 43     |      | SS-6660610-TP | SCREW 1/4-40 L=6             | 平ねじ 1/4-40 L=6      | (2) |
| 44     |      | 401-30730     | SUPPORT PLATE                | 補助板                 | 1   |
| 45     |      | 229-51008     | SOLENOID PIN                 | ソレノイドピン             | 1   |
| 46     |      | RE-0500000-K0 | E-RING                       | E 形止め輪 5            | 1   |
| 47     |      | SD-0600361-SP | HINGE SCREW D=6 H=3.6        | 段ねじ D=6 H=3.6       | 1   |
| 48     |      | SD-0630275-SP | HINGE SCREW D=6.35 H=2.7     | 段ねじ D=6.35 H=2.7    | 1   |
| 49     |      | SD-0640631-TP | HINGE SCREW D=6.35 H=6.3     | 段ねじ D=6.35 H=6.3    | 1   |
| 50     |      | SD-0641456-TP | SHOULDER SCREW D=6.35 H=14.5 | 段ねじ D=6.35 H=14.5   | 1   |
| 51     |      | SM-4041255-SP | SCREW M4 L=12                | なべ小ねじ M4 L=12       | 1   |
| 52     |      | SM-6061202-TP | SCREW M6 L=12                | 六角穴ボルト M6 L=12      | 2   |
| 53     |      | SM-6061202-TP | SCREW M6 L=12                | 六角穴ボルト M6 L=12      | 2   |
| 54     |      | SS-6090510-TP | SCREW 9/64-40 L=5.0          | 平ねじ 9/64-40 L=5     | 2   |
| 55     |      | SS-6110710-TP | SCREW 11/64-40 L=6.5         | 平ねじ 11/64-40 L=6.5  | 1   |
| 56     |      | WP-0641601-SC | WASHER                       | 平座金みがき丸 M6          | 4   |
| 57     |      | 401-33644     | CAM COLLAR ASM.              | カムカラー(組)            | 1   |
| 58     |      | CS-1000881-TP | THRUST COLLAR                | スラスト受 D=10 W=8      | (1) |
| 59     |      | SM-8050512-TP | SCREW 11/64-40 L=4.5         | 止めねじ 11/64-40 L=4.5 | (2) |

PARTS LIST

## 8. TENSION RELEASE & THREAD TENSION COMPONENTS

糸ゆるめ・糸調子関係

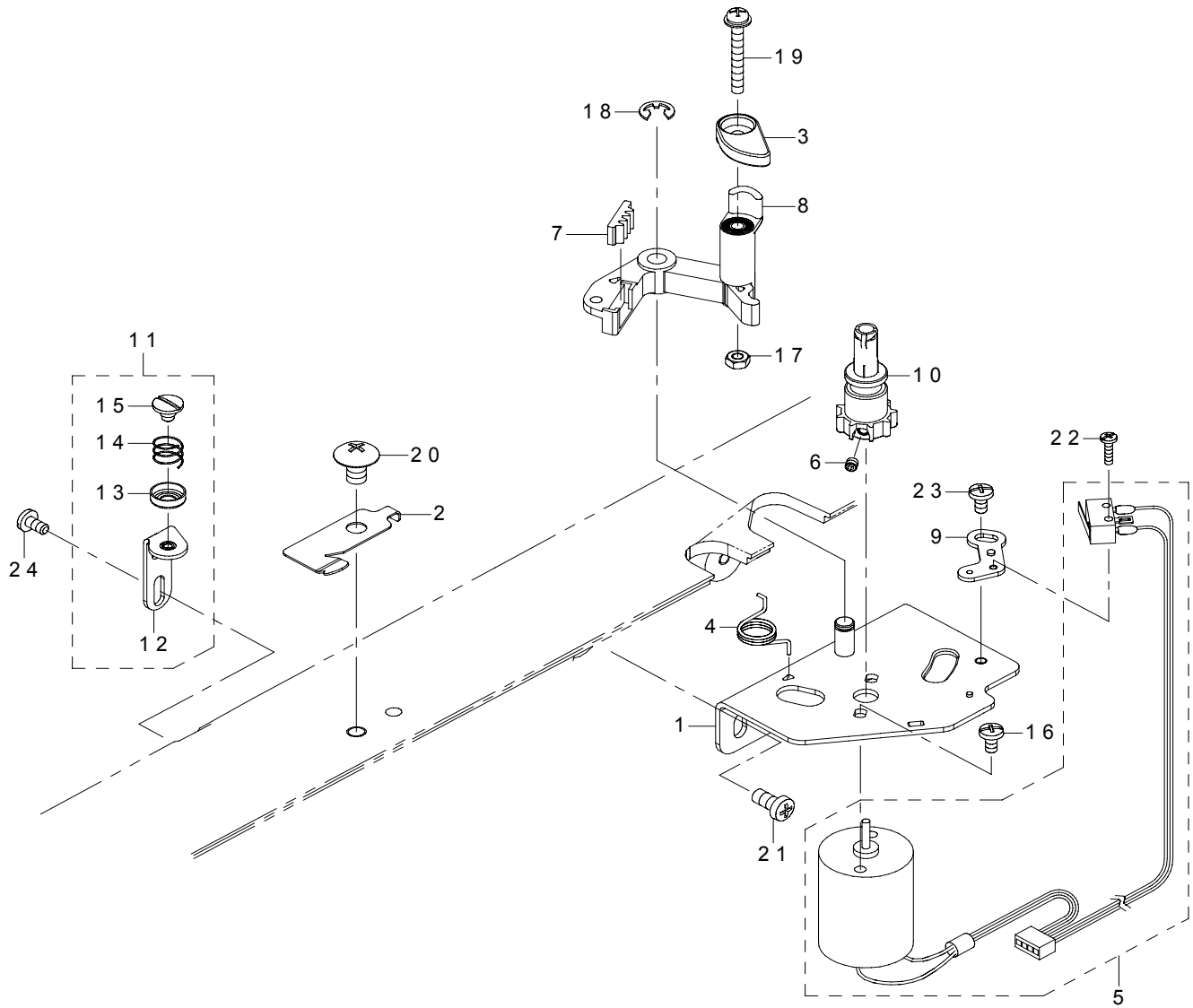




| REF.NO | NOTE | PART NO       | DESCRIPTION               | 品名                          | Qty |
|--------|------|---------------|---------------------------|-----------------------------|-----|
| 1      |      | 401-24959     | RELEASE_LINK              | 皿浮かしリンク                     | 1   |
| 2      |      | 401-24973     | SOL_BASE                  | ソレノイド取付台                    | 1   |
| 3      |      | 401-24976     | RELEASE_LEVER             | 皿浮かしレバー                     | 1   |
| 4      |      | 401-24977     | RELEASE_SOLENOID_LINK     | 皿浮かしソレノイドリンク                | 1   |
| 5      |      | 401-33302     | RELEASE_LINK_GUIDE        | 皿浮かしリンクガイド                  | 1   |
| 6      |      | 401-26078     | DISH RISING SOLENOID      | 糸緩めソレノイド                    | 1   |
| 7      |      | 112-33400     | SPRING                    | ワイパマグネットばね                  | 1   |
| 8      |      | 112-34408     | SOLENOID RUBBER           | ソレノイドゴム                     | 1   |
| 9      |      | 112-34507     | PLUNGER CONNECTING PIN    | プランジャー連結ピン                  | 1   |
| 10     |      | SM-2040750-TP | SCREW M4 L=7.4            | 丸皿ねじ M 4 L = 7. 4           | 1   |
| 11     |      | 401-01535     | SHOULDER_SCREW            | 段ねじ                         | 1   |
| 12     |      | RE-0300000-K0 | E-RING 3                  | E 形止め輪 3                    | 2   |
| 13     |      | RE-0900000-K0 | E-RING 9                  | E 形止め輪 9                    | 1   |
| 14     |      | SD-0500205-TH | SHOULDER SCREW            | 段ねじ D = 5 H = 2             | 1   |
| 15     |      | SD-0500256-TH | SHOULDER SCREW            | 段ねじ D = 5 H = 2. 5          | 1   |
| 16     |      | SL-4030641-SE | SCREW                     | 座金付きねじ                      | 4   |
| 17     |      | 401-32341     | SUPPORT PLATE             | 補助板                         | 1   |
| 18     |      | SL-6041242-TN | BOLT                      | 座金付き六角穴ボルト                  | 2   |
| 19     |      | 133-02708     | RUBBER_WASHER             | ラバーワッシャー                    | 2   |
| 20     |      | SM-6041050-TP | SCREW                     | 平ねじ M 4 L = 1 0             | 1   |
| 21     |      | WP-1221016-SP | WASHER                    | 平座金                         | 1   |
| 22     |      | SL-6041042-TN | BOLT                      | 座金付き六角穴ボルト                  | 4   |
| 23     |      | 229-20904     | TENSION RELEASING         | 糸ゆるめピン                      | 1   |
| 24     |      | 229-45356     | THREAD TENSION ASM.       | 糸調子 (組)                     | 1   |
| 25     |      | 229-21308     | THREAD TENSION NUT        | 糸調子ナット                      | (1) |
| 26     |      | 229-21803     | DISK STOPPER              | 糸調子皿押え                      | (1) |
| 27     |      | 229-21506     | THREAD TENSION DISK       | 糸調子皿                        | (2) |
| 28     |      | 229-45307     | THREAD TENSION POST BASE  | 糸調子棒台                       | (1) |
| 29     |      | 229-21209     | THREAD TENSION POST       | 糸調子棒                        | (1) |
| 30     |      | 229-21407     | ROTATION STOPPER          | 糸調子皿回転止め                    | (1) |
| 31     |      | 229-21704     | THREAD TENSION SPRING, A  | 糸調子ばね (A)                   | (1) |
| 32     |      | 229-21605     | THREAD TAKE-UP SPRING     | 糸取りばね                       | (1) |
| 33     |      | SS-8090670-SP | SCREW 9/64-40 L= 5.5      | 止めねじ 9 / 6 4 - 4 0 L = 5. 5 | (1) |
| 34     |      | 229-45463     | THREAD TENSION ASM. ,NO.1 | 第一糸調子 (組)                   | 1   |
| 35     |      | 229-45414     | THREAD TENSION POST       | 第一糸調子棒                      | (1) |
| 36     |      | 229-45604     | THREAD TENSION GUIDE      | 第一糸調子案内                     | (1) |
| 37     |      | 229-45505     | THREAD TENSION SPRING     | 第一糸調子ばね                     | (1) |
| 38     |      | 229-45703     | THREAD TENSION NUT        | 第一糸調子ナット                    | (1) |
| 39     |      | 229-45802     | THREAD TENSION DISK       | 第一糸調子皿                      | (2) |
| 40     |      | SM-8040612-TP | SCREW M4 L=6              | 止めねじ M 4 L = 6              | 1   |
| 41     |      | SM-80608A2-TP | SCREW M6 L=8              | 六角穴付き止めねじ M 6 L = 8         | 1   |
| 42     |      | NM-6040000-SN | NUT M4                    | 六角ナット M 4                   | 1   |

PARTS LIST

9. BOBBIN WINDER COMPONENTS  
糸巻き関係

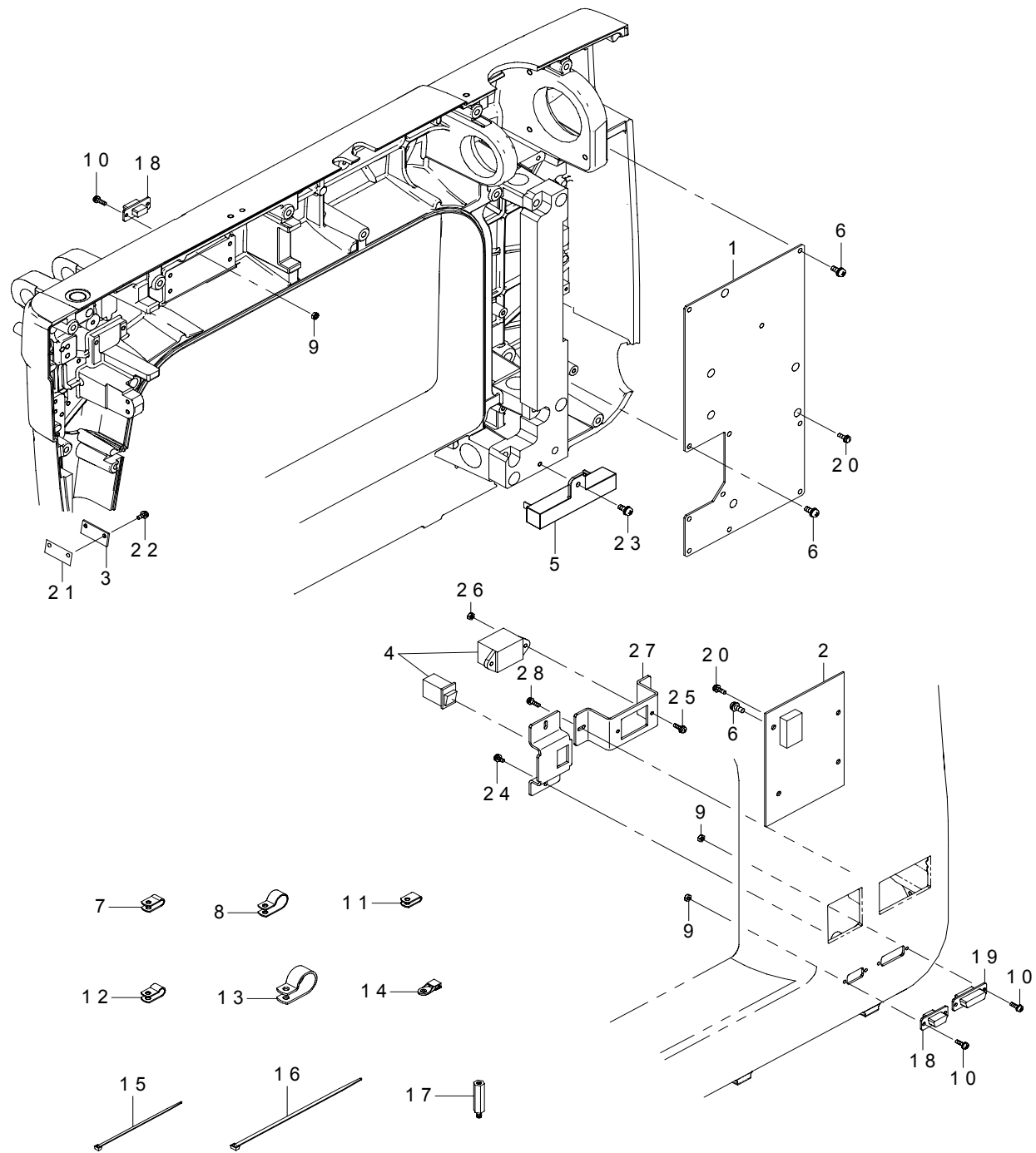


| REF.NO | NOTE | PART NO       | DESCRIPTION                  | 品名                     | Qty |
|--------|------|---------------|------------------------------|------------------------|-----|
| 1      |      | 401-25757     | BOBBIN_WINDER_BASE_ASSY      | 糸巻き取付板 (組)             | 1   |
| 2      |      | 400-37008     | THREAD_CUTTER                | 糸切り保持板                 | 1   |
| 3      |      | 400-53677     | BW_ADJUST_BODY               | 糸巻量調節体                 | 1   |
| 4      |      | 400-61796     | BW_SPRING                    | 糸巻ばね                   | 1   |
| 5      |      | 400-97681     | ASSY_WIND_MOTOR              | 糸巻きモータ (組)             | 1   |
| 6      |      | SM-8030312-TP | SCREW M3 L=3                 | 止めねじ M3 L=3            | 1   |
| 7      |      | 400-76145     | STOPPER_RUBBER               | 回り止めゴム                 | 1   |
| 8      |      | 400-97679     | BW_ADJUST_BASE               | 糸巻量調節台                 | 1   |
| 9      |      | 400-97680     | SW_BASE                      | SW台                    | 1   |
| 10     |      | 401-07610     | BOBBIN_WINDER_SHAFT          | ボビン糸巻き軸                | 1   |
| 11     |      | A3231-957-0A0 | TOP COVER THREAD GUIDE ASSEM | 糸案内台 (組)               | 1   |
| 12     |      | A3231-957-000 | THREAD GUIDE BASE            | 糸案内台                   | (1) |
| 13     |      | A3233-731-000 | THREAD GUIDE DISK            | 糸案内皿                   | (1) |
| 14     |      | A3234-731-000 | THREAD GUIDE SPRING          | 糸案内ばね                  | (1) |
| 15     |      | A3235-731-000 | THREAD GUIDE DISK SHAFT      | 糸案内皿軸                  | (1) |
| 16     |      | SM-5030455-SN | SCREW M3 L=4                 | バインドねじ M3 L=4          | 2   |
| 17     |      | NM-6030002-SF | NUT M3                       | 六角ナット M3               | 1   |
| 18     |      | RE-0400000-K0 | E-RING 4                     | E形止め輪 4                | 1   |
| 19     |      | SL-4032591-SC | SCREW M3X25                  | なべ小ねじセムス M3 X 0.5 L=25 | 1   |
| 20     |      | SM-0050801-SC | SCREW                        | トラスねじ M5 L=8           | 1   |
| 21     |      | SM-4040801-SN | SCREW M4 L=8                 | なべ小ねじ M4 X 0.7 L=8     | 2   |
| 22     |      | SM-5020855-SN | SCREW M2 L=8                 | バインド小ねじ M2 L=8         | 1   |
| 23     |      | SM-5030655-SN | SCREW M3X0.5 L=6             | バインドねじ                 | 1   |
| 24     |      | SM-5030655-SN | SCREW M3X0.5 L=6             | バインドねじ                 | 1   |

PARTS LIST

# 10. ELECTRICAL DEVICE COMPONENTS

電装関係

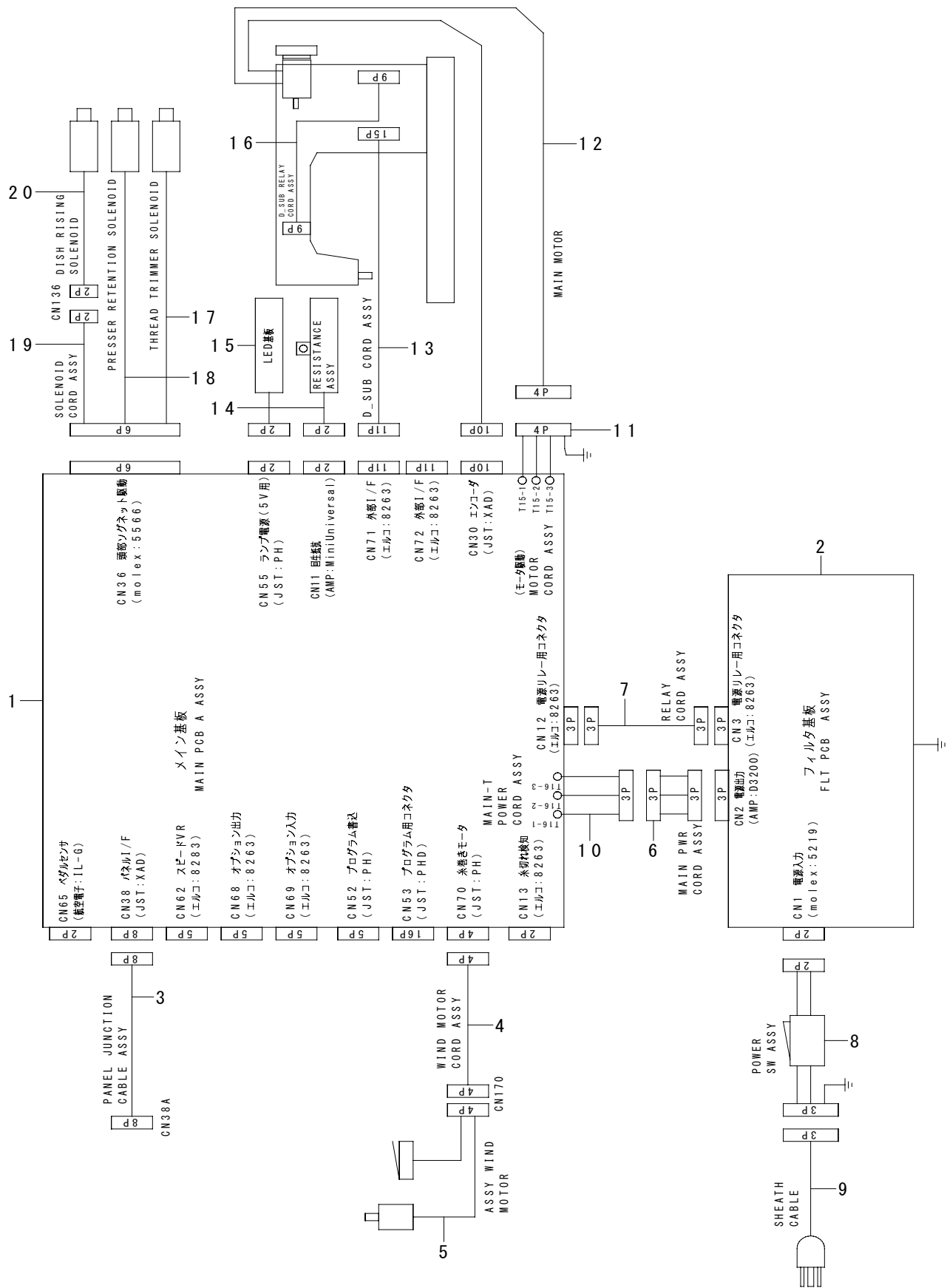


| REF.NO | NOTE | PART NO       | DESCRIPTION           | 品名                     | Qty |
|--------|------|---------------|-----------------------|------------------------|-----|
| 1      |      | 401-26080     | MAIN PCB A ASSY       | MAIN 基板 A 組            | 1   |
| 2      |      | 401-26091     | FLT PCB ASSY          | FLT 基板組                | 1   |
| 3      |      | 401-26061     | LED PCB ASSY          | LED 基板組                | 1   |
| 4      |      | 401-26100     | POWE SW ASSY          | 電源 SW 組                | 1   |
| 5      |      | 401-10797     | RESISTANCE_ASSY       | 回生抵抗組                  | 1   |
| 6      |      | SL-4041081-SC | SCREW M4 L=10         | なべ小ねじセムス M4 L=10       | 15  |
| 7      |      | HX-0015000-0A | CABLE CLAMP           | ケーブルクリップ               | 2   |
| 8      |      | HX-0015000-0F | CABLE CLIP            | ケーブルクリップ               | 3   |
| 9      |      | NM-6030001-SC | NUT M3X0.5 TYPE1      | 六角ナット M3 X 0.5 1種      | 6   |
| 10     |      | SL-4031081-SC | SCREW M3 X 10         | なべねじセムス M3 L=10        | 6   |
| 11     |      | HX-0015000-00 | CLIP                  | ケーブルクリップ               | 3   |
| 12     |      | HX-0015000-0B | CABLE CLIP            | ケーブルクリップ               | 1   |
| 13     |      | HX-0015000-0J | CLIP                  | ケーブルクリップ               | 2   |
| 14     |      | HX-0034400-00 | HARNESS PARTS         | 束線パーツ                  | 4   |
| 15     |      | EA-9500B01-00 | CABLE BAND            | 束線バンド                  | 12  |
| 16     |      | EA-9500B02-00 | CABLE BAND 150        | 結束バンド 150              | 1   |
| 17     |      | HX-0033900-0B | BOARD PARTS           | 基板パーツ                  | 1   |
| 18     |      | 401-26074     | D_SUB RELAY CORD ASSY | ステッチレギュレータ中継コード        | 1   |
| 19     |      | 401-26073     | D_SUB CORD ASSY       | D SUB 中継コード            | 1   |
| 20     |      | SL-4031081-SC | SCREW M3 X 10         | なべねじセムス M3 L=10        | 2   |
| 21     |      | KX-0000002-90 | COOL SHEET            | クールシート                 | 1   |
| 22     |      | SL-4030881-SC | SCREW M3 L=8          | 座金付きなべ小ねじ M3 L=8       | 2   |
| 23     |      | SL-4041091-SC | SCREW M4 L=10         | なべ小ねじセムス M4 X 0.7 L=10 | 1   |
| 24     |      | SL-4030681-SC | SCREW M3 L=6          | 座金付きなべ小ねじ M3 L=6       | 2   |
| 25     |      | SL-4031081-SC | SCREW M3 X 10         | なべねじセムス M3 L=10        | 2   |
| 26     |      | NM-6030001-SC | NUT M3X0.5 TYPE1      | 六角ナット M3 X 0.5 1種      | 2   |
| 27     |      | 401-24972     | OUTLET_PLATE          | コンセント取付台               | 1   |
| 28     |      | SL-4030681-SC | SCREW M3 L=6          | 座金付きなべ小ねじ M3 L=6       | 2   |

PARTS LIST

# 11. WIRING DIAGRAM

電装配線図

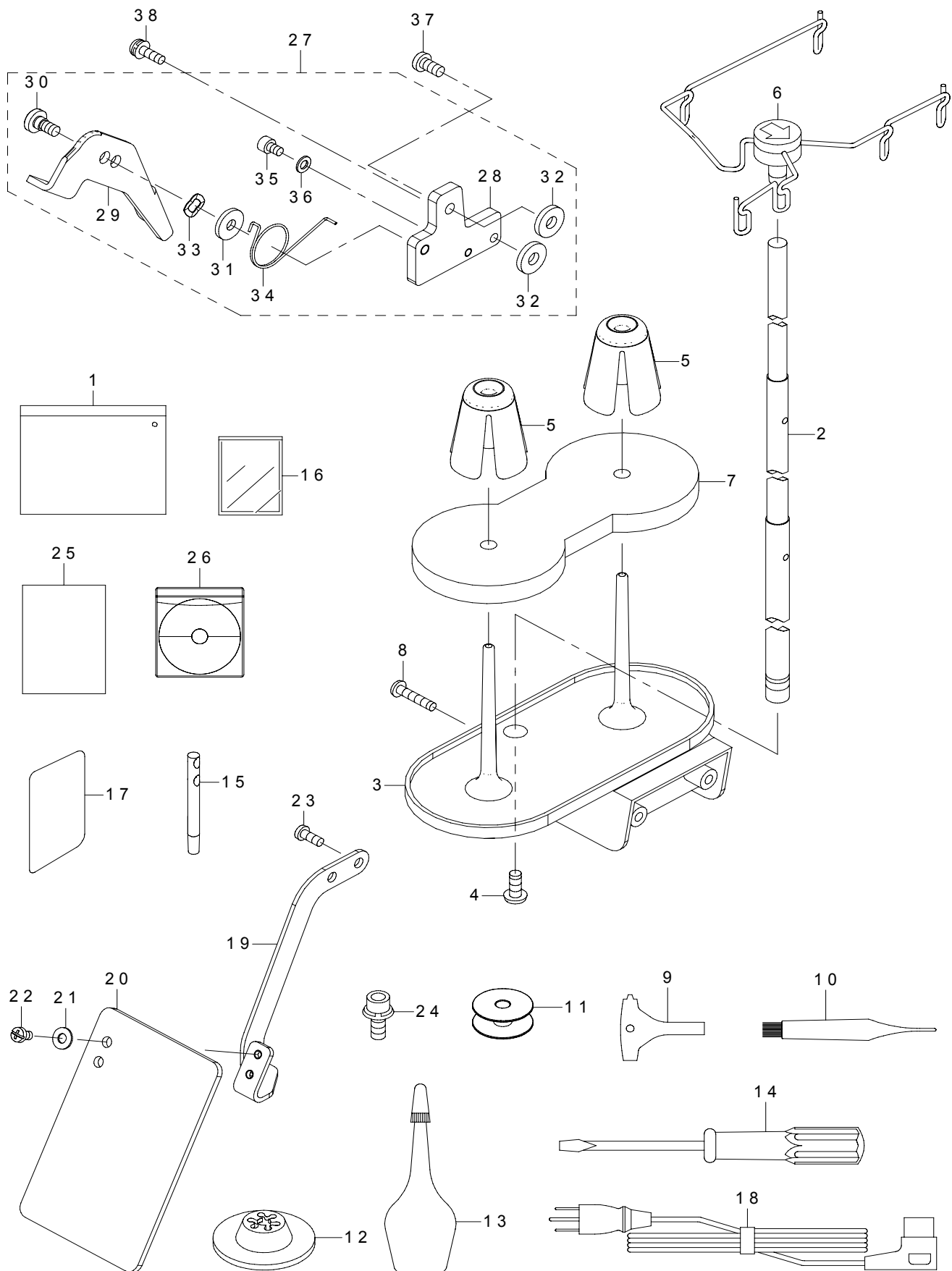


| REF.NO | NOTE | PART NO       | DESCRIPTION                | 品名                   | Qty |
|--------|------|---------------|----------------------------|----------------------|-----|
| 1      |      | 401-26080     | MAIN PCB A ASSY            | MA I N 基板 A 組        | 1   |
| 2      |      | 401-26091     | FLT PCB ASSY               | F L T 基板組            | 1   |
| 3      |      | 401-26103     | PANEL JUNCTION CABLE ASSY  | パネル中継ケーブル組           | 1   |
| 4      |      | 401-26075     | WIND MOTOR CORD ASSY       | 糸巻きモータ中継コード組         | 1   |
| 5      |      | 400-97681     | ASSY_WIND_MOTOR            | 糸巻きモータ(組)            | 1   |
| 6      |      | 401-26071     | MAIN PWR CORD ASSY         | MA I N 電源中継コード組      | 1   |
| 7      |      | 401-26070     | RELAY CORD ASSY            | リレー中継コード組            | 1   |
| 8      |      | 401-26100     | POWER SW ASSY              | 電源 SW 組              | 1   |
| 9      |      | HW-0022500-30 | SHEATH CABLE               | A C コード              | 1   |
| 10     |      | 401-12068     | MAIN-T PWR CORD ASSY       | MA I N - T 電源入力ケーブル組 | 1   |
| 11     |      | 401-14081     | MOTOR CORD ASSY            | モータコード組              | 1   |
| 12     |      | 401-11203     | SERVO MOTOR                | サーボモータ               | 1   |
| 13     |      | 401-26073     | D_SUB CORD ASSY            | D _ S U B 中継コード組     | 1   |
| 14     |      | 401-10797     | RESISTANCE_ASSY            | 回生抵抗組                | 1   |
| 15     |      | 401-26061     | LED PCB ASSY               | L E D 基板組            | 1   |
| 16     |      | 401-26074     | D_SUB RELAY CORD ASSY      | ステッチレギュレータ中継コード組     | 1   |
| 17     |      | 401-26101     | THREAD TRIMMER SOLENOID    | 糸切りソレノイド             | 1   |
| 18     |      | 401-26079     | PRESSER RETENTION SOLENOID | 押え下げソレノイド            | 1   |
| 19     |      | 401-26076     | SOLENOID CORD ASSY         | ソレノイド中継コード組          | 1   |
| 20     |      | 401-26078     | DISH RISING SOLENOID       | 糸緩めソレノイド             | 1   |

PARTS LIST

## 12. ACCESSORIE PARTS COMPONENTS

付属品関係





| REF.NO | NOTE | PART NO         | DESCRIPTION              | 品名                     | Qty |
|--------|------|-----------------|--------------------------|------------------------|-----|
| 1      |      | 229-32800       | ACCESSORIE BAG           | 付属品バッグ                 | 1   |
| 2      |      | 400-82787       | THREAD_GUIDE_POST_L      | 糸巻糸立棒                  | 1   |
| 3      |      | A1118-644-000-A | SPOOL HOLDER             | 糸立皿 A                  | 1   |
| 4      |      | SM-5051255-SN   | SCREW                    | バインドねじ                 | 1   |
| 5      |      | A1120-202-000   | SPOOL RETAINER           | 糸巻振れ止め                 | 2   |
| 6      |      | A1120-644-0A0   | THREAD GUIDE ASM.        | 糸立糸案内 (総組)             | 1   |
| 7      |      | A1121-202-000   | SPOOL REST CUSHION       | 糸巻シート                  | 1   |
| 8      |      | SM-5042005-SN   | SCREW M4 L=20            | バインド小ねじ M4 L=20        | 2   |
| 9      |      | A9110-700-000   | SCREWDRIVER              | ドライバー                  | 1   |
| 10     |      | A9137-956-000   | BRUSH                    | ブラシ                    | 1   |
| 11     |      | D9117-141-E00   | BOBBIN                   | アルミボビン                 | 4   |
| 12     |      | A1150-090-000   | SPOOL CAP                | 糸巻き当て座                 | 1   |
| 13     |      | A9102-062-BA0   | OILER WITH OIL           | 油差し (油入り)              | 1   |
| 14     |      | A9103-102-000   | SCREW DRIVER, LARGE      | ドライバー (中)              | 1   |
| 15     |      | 225-02504       | THREAD GUIDE BAR         | 糸案内棒                   | 1   |
| 16     |      | MDP-5AAB110T    | NEEDLE DPX5 NM110-10     | 針 DPX5 NM110-10        | 1   |
| 17     |      | 401-32095       | FRAME L SEAL             | 目隠しシール                 | 1   |
| 18     |      | HW-0022500-30   | SHEATH CABLE             | ACコード                  | 1   |
| 19     |      | 401-24975       | SAFETY PLATE BASE        | 安全プレート取付板              | 1   |
| 20     |      | 260-37200       | SAFETY PLATE             | 安全プレート                 | 1   |
| 21     |      | WP-0450801-SC   | WASHER 4.5X10X0.8        | 平座金 4.5 X 10 X 0.8     | 2   |
| 22     |      | SM-4040655-SN   | SCREW M4X0.7 L=6         | なべ小ねじ M4 L=6           | 2   |
| 23     |      | SM-4041001-SN   | SCREW M4X0.7 L=10        | なべ小ねじ M4 X 0.7 L=10    | 2   |
| 24     |      | SL-6061692-TN   | BOLT                     | 座金付き六角穴ボルト             | 4   |
| 25     |      | 401-25781       | INSTRUCTION_MANUAL       | 安全上の注意書                | 1   |
| 26     |      | 401-25782       | INSTRUCTION_MANUAL(CD)   | 取扱説明書 (CD)             | 1   |
| 27     |      | 401-32333       | HAND LIFTER ASM.         | 押え上げレバー組               | 1   |
| 28     |      | 401-32115       | BASE PLATE               | ベースプレート                | (1) |
| 29     |      | 401-32306       | HAND LIFTER              | レバー                    | (1) |
| 30     |      | SD-0600346-TP   | SHOULDER SCREW D=6 H=3.4 | 段ねじ D=6 H=3.4          | (1) |
| 31     |      | WP-0522016-SH   | WASHER                   | 平座金 5.2 X 15 X 2       | (1) |
| 32     |      | WP-0612516-SD   | WASHER 6.1X15.2X2.5      | 平座金 6.1 X 15.2 X 2.5   | (2) |
| 33     |      | WZ-0640200-KP   | WAVE WASHER              | 波形座金                   | (1) |
| 34     |      | 401-33605       | SPRING                   | ばね                     | (1) |
| 35     |      | SM-6040602-TN   | BOLT                     | 六角穴ボルト                 | (1) |
| 36     |      | WP-0430801-SE   | WASHER 4.3X9X0.8         | 平座金みがき丸 M4             | (1) |
| 37     |      | SM-4051001-SN   | SCREW M5                 | なべ小ねじ M5 X 0.8 L=10    | 1   |
| 38     |      | SL-4041481-SC   | SCREW M4X0.7 L=14        | なべ小ねじセムス M4 X 0.7 L=14 | 1   |

PARTS LIST

**JUKI®**

**JUKI 株式会社**

縫製機器ユニット

〒 206-8551 東京都多摩市鶴牧 2-11-1

TEL. 042-357-2371 (ダイヤルイン)

FAX. 042-357-2380

<http://www.juki.co.jp>

**JUKI CORPORATION**

SEWING MACHINERY BUSINESS UNIT

2-11-1, TSURUMAKI, TAMA-SHI,

TOKYO, 206-8551, JAPAN

PHONE : (81)42-357-2341

FAX : (81)42-357-2345

<http://www.juki.com>



※このサービスマニュアル / パーツリストは仕様改良のため予告なく変更する事があります。

\* The description covered in this Service Manual, PartsList is subject to change for improvement of the commodity without notice.

Copyright © 2013 JUKI CORPORATION.

• 本書の内容を無断で転載、複写することを  
禁止します。

• All rights reserved throughout the world.

000313