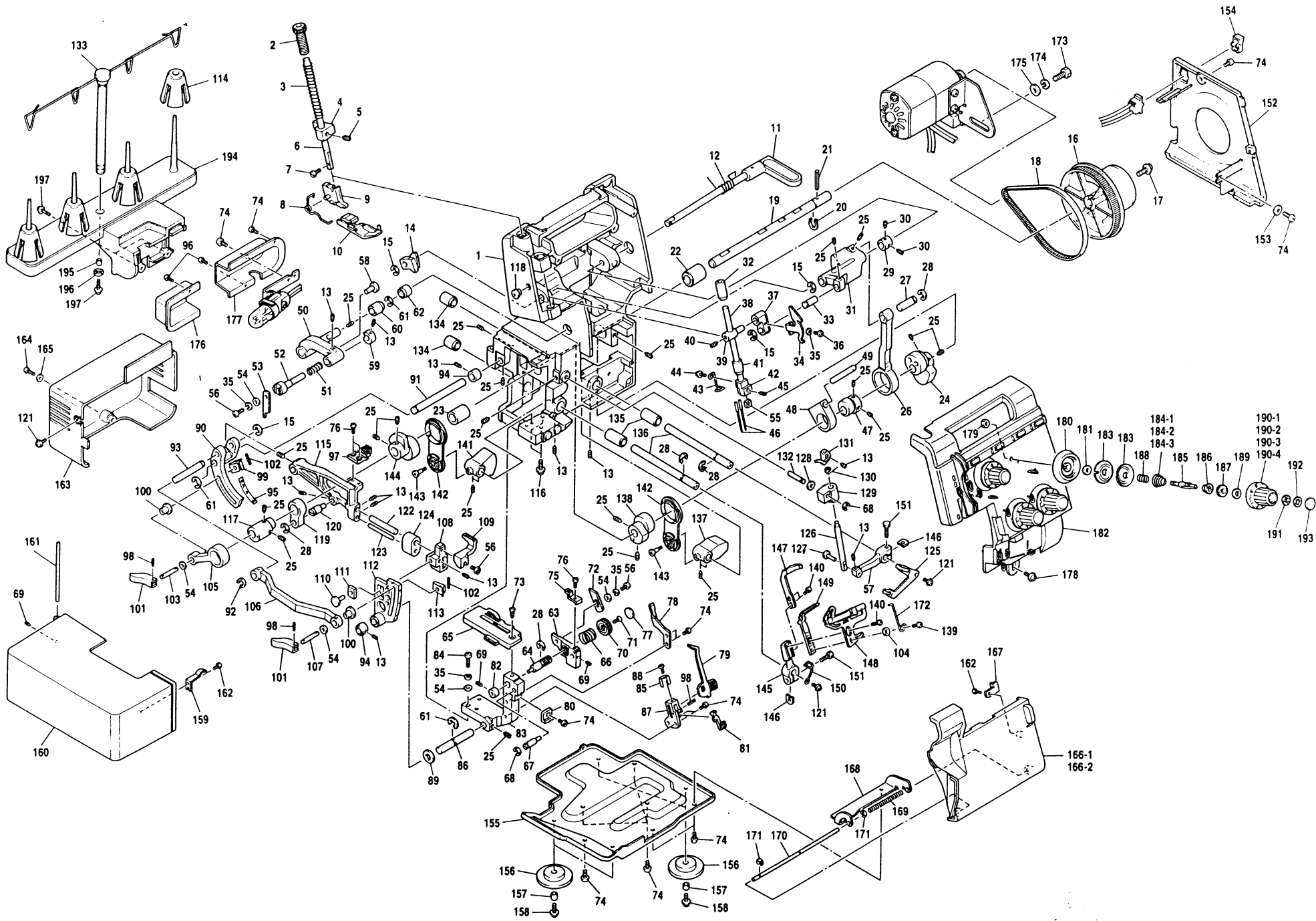


**PARTS BOOK**

FOR

**brother<sup>®</sup> Overlock Sewing Machine**

**MODEL 920D/934D**



Ref. No.	Parts No.	Parts Name	Ref. No.	Parts No.	Parts Name	Ref. No.	Parts No.	Parts Name	Ref. No.	Parts No.	Parts Name
1	X77040-001	Machine body	61	048070-342	Stop ring	121	X75721-001	Set screw	180	X75618-001	Tension bracket
2	142860-001	Presser adjusting screw	62	126594-000	Driving arm bushing, right	122	138868-001	Main feed bar shaft	181	025050-132	Washer
3	126662-001	Presser bar spring	63	X77121-000	Lower knife holder	123	138869-001	Differential feed guide shaft	182	X77221-001	Panel assembly
4	127198-000	Presser bar guide bracket	64	X77122-001	Lower knife control shaft	124	X05041-000	Sponge	183	X75717-001	Tension disc
5	100058-003	Set screw	65	X77087-001	Needle plate	125	X77180-001	Looper thread take-up A	184-1	X07341-001	Needle tension spring H
6	126660-001	Presser bar	66	X77126-001	Lower knife control spring	126	127786-001	Upperlooper shaft	184-2	127849-001	Upperlooper tension spring
7	126851-001	Set screw	67	X77125-001	Holder guide shaft	127	127785-001	Upperlooper stud shaft	184-3	127850-001	Lowerlooper tension spring
8	X76602-001	Presser foot spring	68	048040-342	Stop ring	128	025710-235	Washer	185	X05012-000	Tension control stud
9	X76600-001	Presser holder assembly	69	014300-332	Set screw	129	X76766-001	Upperlooper shaft guide	186	X75051-000	Tension spring washer
10	X76606-001	Presser foot assembly	70	X77123-001	Lower knife control knob	130	X75971-001	Upperlooper thread guide	187	X05015-000	Dial ratchet
11	138877-006	Presser bar lifter	71	061400-805	Machine screw	131	X75209-001	Upperlooper	188	X75883-001	Tension spring S
12	X77096-001	Spring	72	X05007-001	Lower knife	132	127784-001	Guide shaft	189	025710-235	Washer
13	014400-422	Set screw	73	100032-003	Set screw	133	X77184-001	Spool stand assembly	190-1	X75910-001	Needle tension dial, left
14	138879-000	Presser lifter cam	74	060400-606	Set screw	134	126611-000	Looper lever bushing, back	190-2	X75910-002	Needle tension dial, right
15	048050-346	Stop ring	75	X77127-001	Needle guard	135	126610-000	Looper lever bushing, front	190-3	X75910-003	Upperlooper tension dial
16	127830-005	Timing pulley	76	060300-616	Set screw	136	X76339-000	Looper lever shaft	190-4	X75910-004	Lowerlooper tension dial
17	X76398-001	Set screw	77	X77124-001	Knife dial seal	137	X77145-000	Upperlooper balance	191	X75729-001	Spring washer
18	126533-001	Timing belt	78	X77095-001	Fixed needle guard	138	X77144-000	Upperlooper eccentric wheel	192	138384-001	Stop ring
19	127789-000	Driving shaft	79	X77094-001	Stitch tongue	139	062670-312	Set screw	193	X75627-001	Tension dial plate
20	048100-142	Stop ring	80	X77055-001	Cloth plate cover stopper	140	062670-612	Set screw	194	X77183-001	Spool stand base
21	047402-542	Spring pin	81	X77093-000	Stitch finger release lever	141	X77150-000	Lowerlooper balance	195	X76930-001	Spacer
22	126558-000	Driving shaft bushing, right	82	X76230-001	Thread tension release block	142	X75391-001	Double chain looper rod	196	X76931-001	Spring washer
23	127690-000	Driving shaft bushing, left	83	X77049-000	Needle plate base	143	X75317-001	Stud screw	197	X75770-001	Set screw
24	X77081-000	Needle bar eccentric wheel	84	062402-005	Set screw	144	X77149-000	Lowerlooper eccentric wheel			
25	012500-632	Set screw	85	X77092-001	Stitch plate spring	145	X05077-001	Lowerlooper lever			
26	138839-000	Needle bar rod	86	X77110-001	Differential feed lever shaft	146	X05281-001	Washer		X77228-001	Motor (110/120V area)
27	138875-001	Rod shaft	87	X77091-000	Stitch holder	147	X75388-001	Movable needle guard B		X77233-001	Motor (Canada)
28	048060-342	Stop ring	88	062300-406	Set screw	148	X77137-001	Lowerlooper thread through-feed assembly		X77308-001	Motor (220V area)
29	X05286-001	Driving arm bushing	89	025080-132	Washer	149	X77340-001	Lowerlooper		X77222-001	Motor (230V area)
30	014400-332	Set screw	90	X77103-001	Feed bar lever	150	X77207-000	Looper thread take-up B		X77247-001	Motor (U.K., Australia, New Zealand)
31	X77084-000	Needle bar driving lever	91	X75080-001	Driving lever shaft	151	017501-615	Set screw		X77250-001	Motor (dual voltage)
32	126702-000	Needle bar bushing, upper	92	048070-142	Stop ring	152	X77056-001	Belt cover			
33	138876-001	Needle bar rod shaft	93	X77104-001	Feed bar shaft	153	025040-332	Washer		J01780-051	Foot controller (110/120V area)
34	X77085-001	Thread take-up	94	X75150-001	Collar	154	X57554-051	PW switch key-top		J01434-051	Foot controller (Canada)
35	028040-242	Spring washer	95	X77214-001	Feed pitch scale plate	155	X77048-001	Oil pan		J01590-051	Foot controller (220/230V area)
36	060670-812	Set screw	96	062300-604	Set screw	156	X75545-000	Cushion A		J01664-051	Foot controller (U.K.)
37	126782-001	Needle bar connecting link A	97	X77105-001	Main feed dog	157	X75546-000	Spacer		J01665-051	Foot controller (Australia, New Zealand)
38	X75650-001	Needle bar	98	047200-842	Spring pin	158	X75720-001	Set screw		J02127-051	Foot controller (dual voltage)
39	126656-001	Needle bar connecting stud	99	127558-001	Spring	159	X77052-001	Cloth plate cover spring			
40	014060-632	Set screw	100	X05008-001	Feed link bushing	160	X77241-001	Cloth plate cover assembly			
41	126703-000	Needle bar bushing, lower	101	127559-000	Feed adjusting cam	161	X77054-001	Hinge pin		126736-001	Soft cover
42	X75205-001	Needle clamp	102	047201-442	Spring pin	162	037300-815	Set screw		122991-002	Accessory bag
43	X75972-001	Needle bar thread guide	103	X05001-001	Feed adjusting shaft	163	X77057-001	Motor cover		X75902-001	Tweezers
44	X76215-001	Set screw	104	025350-132	Washer	164	062401-206	Set screw		X75904-000	Thread net
45	016400-632	Set screw	105	X77102-000	Feed link	165	126850-000	Washer		X77260-000	Thread spool cap
46	X75577-014	Needle #90	106	X77107-000	Differential feed link	166-1	X77202-001	Front cover (934D)		X75437-001	Screw driver (small)
47	X77113-000	Upper knife eccentric wheel	107	127560-001	Feed adjusting shaft	166-2	X77369-001	Front cover (920D)		X75917-001	Needle set (#80/#90)
48	127795-000	Upper knife driving lever guide	108	X77106-000	Differential feed bar	167	X75632-001	Front cover hook		X75906-001	Cleaning brush
49	127805-001	Upper knife driving lever	109	138895-001	Differential feed dog	168	X77044-001	Front cover hinge plate		X77128-001	Hexagonal (allen) wrench
50	X77116-001	Upper knife driving arm	110	138867-001	Guide shaft	169	126519-000	Front cover spring		X55468-051	Screw driver (large)
51	X77118-001	Upper knife presser spring	111	X77111-000	Slide block	170	X77045-001	Front cover guide shaft		X77283-001	Trim trap
52	X77117-001	Upper knife holder	112	X77108-000	Driving control lever	171	048020-346	Stop ring		X76590-002	Blind stitch foot
53	X77119-001	Upper knife	113	X77109-001	Driving control spring	172	X75984-001	Lowerlooper screw cover		X76663-001	Elastic taping foot
54	025040-232	Washer	114	126863-002	Spool cushion	173	103741-001	Set screw		X76670-002	Pearl sequence foot
55	X75246-001	Nut	115	X77099-000	Main feed bar	174	203735-001	Spring washer		X76668-002	Piping foot
56	060400-812	Set screw	116	X77265-001	Set screw	175	100197-004	Washer			
57	X77132-001	Upperlooper shaft lever	117	X77101-000	Feed eccentric wheel	176	X77239-001	Rear cover			
58	127656-001	Upper knife holder guide shaft	118	114255-003	Cap	177	X77063-001	Lamp cover			
59	127669-001	Upper knife holder guide	119	126872-000	Vertical feed lever	178	X75721-001	Set screw			
60	126595-000	Driving arm bushing, left	120	127801-001	Vertical adjusting shaft	179	021500-106	Set screw			

