

BUYER'S MODEL NO. 7464 , 7466

FACTORY MODEL 464x0 , 464x1 , 464x2
466x0 , 466x1 , 466x2

ORIGINAL ISSUE

JULY, 2005

SECTION ----

REVISION

AUGUST, 2006

REVISION

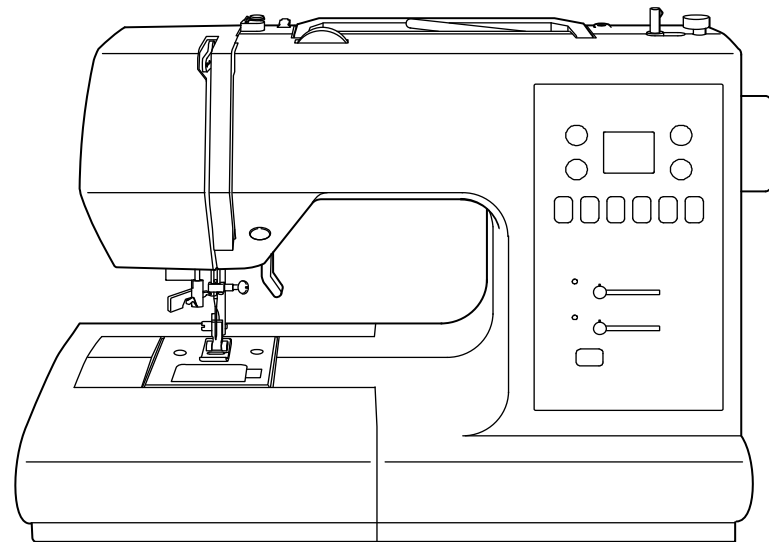
MARCH, 2008

REVISION

MAY, 2008

REFER TO IMPORTANT NOTICE BELOW

PARTS LIST FOR MODEL 7464 , 7466

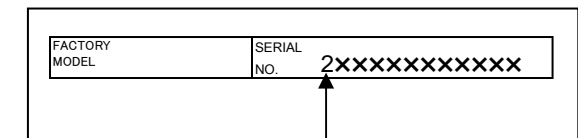
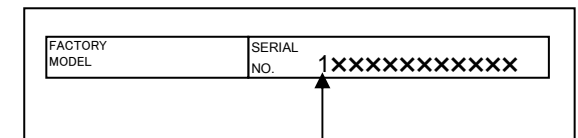
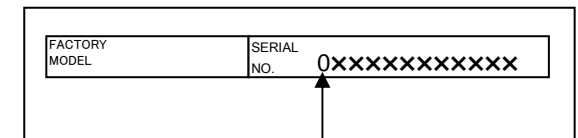


SINGER®

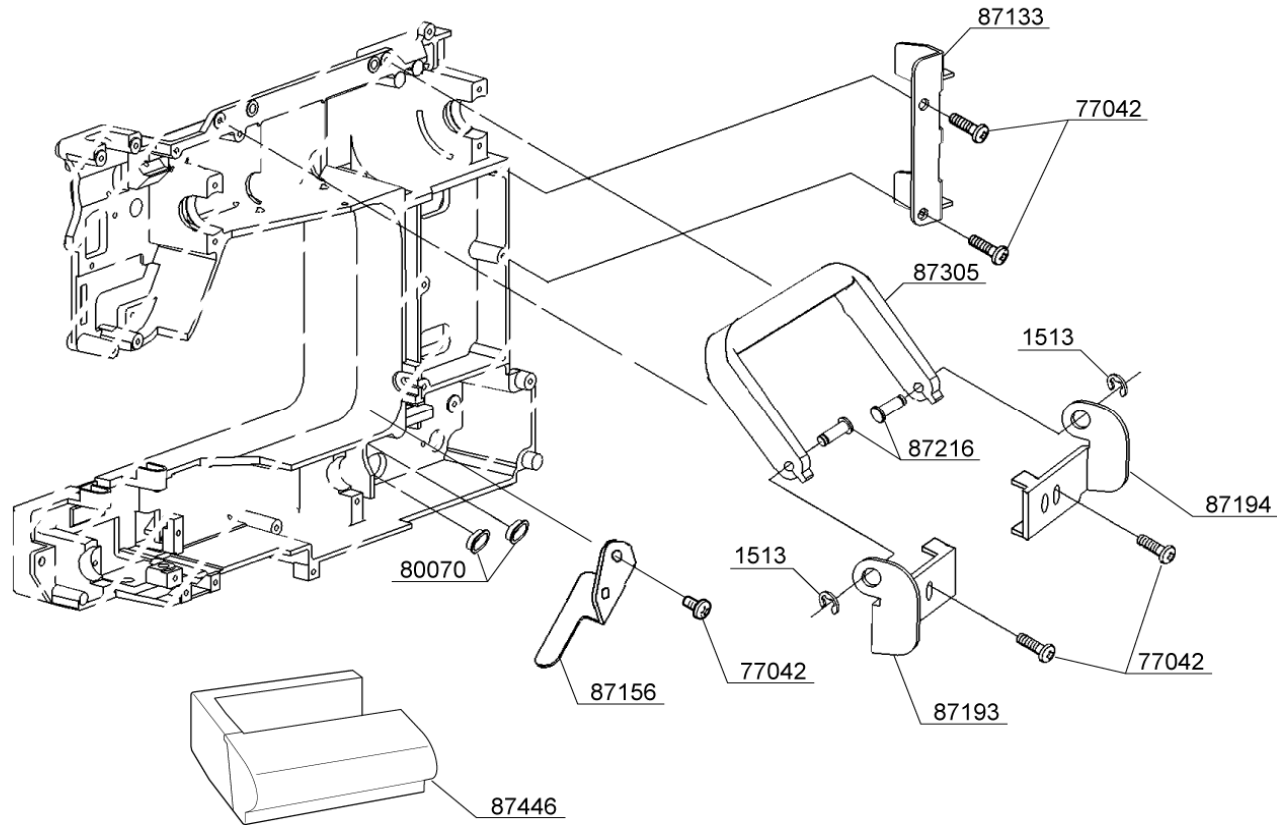
IMPORTANT:

WHEN ORDERING THE PARTS
ALWAYS CHECK THE SERIAL
NUMBER OF THE MACHINE.

FIRST DIGIT OF THE SERIAL
NUMBER MUST MATCH WITH
THE LAST DIGIT OF THE FACTORY
MODEL ABOVE.

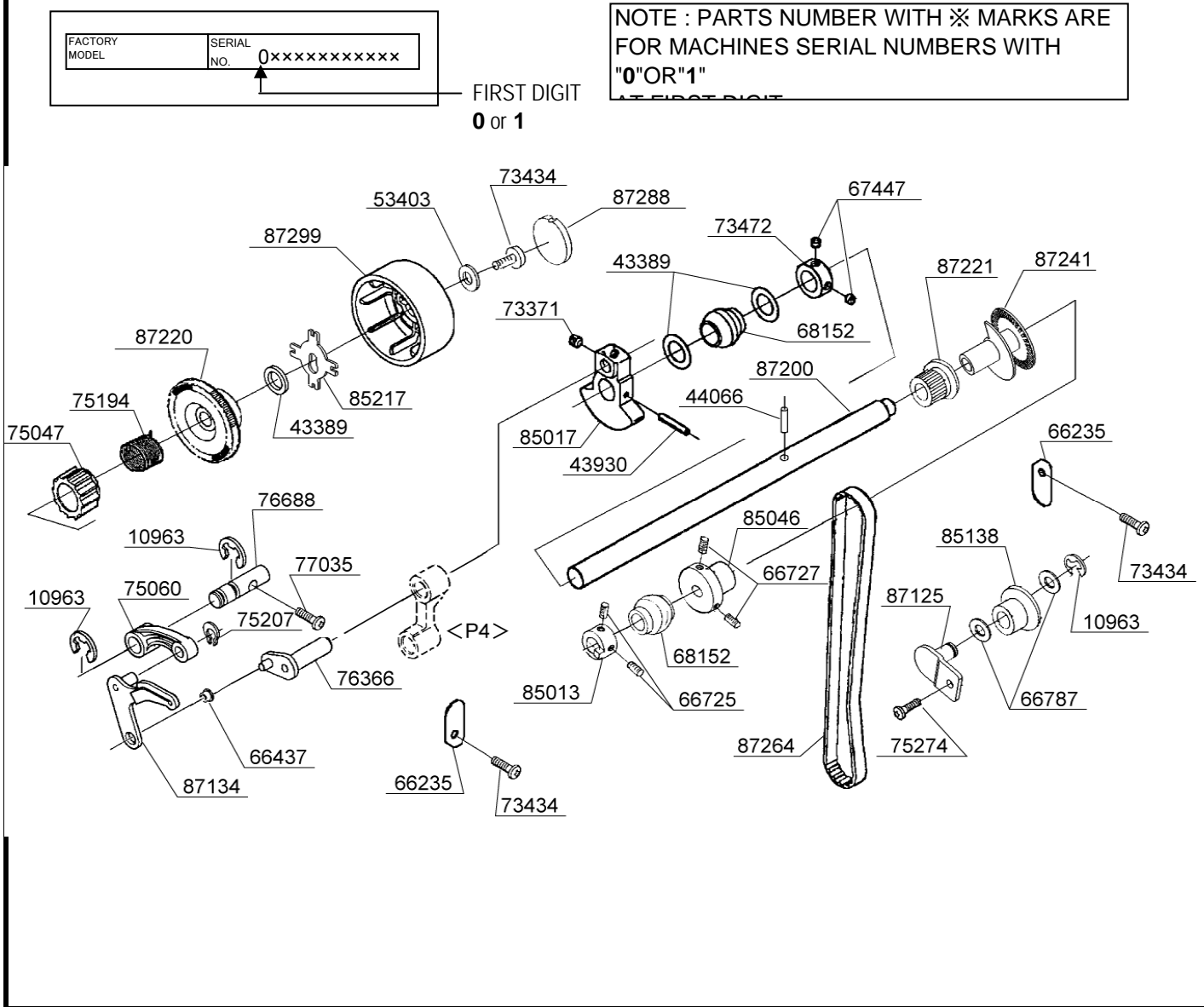


BUYER'S MODEL NO.	7464 , 7466	SECTION	PAGE	REVISION	REMARKS	PART NO.	DESCRIPTION
BUYER'S MODEL NAME	COSMO G-2,CB-2,3		1	AUGUST, 2006		1513	E4 CLIP-ON-WASHER
FACTORY MODEL	464x0 , 464x1 , 464x2 466x0 , 466x1 , 466x2					77042	M4 PHILLIPS SCREW
ORIGINAL ISSUE	JULY , 2005	SERIAL NO.				80070	CORD GUIDE
						87133	BRACKET
						87156	BRACKET
						87193	HANDLE BRACKET (L)
						87194	HANDLE BRACKET (R)
						87216	PIN
						87305	HANDLE
						87446	ACC. BOX



BUYER'S MODEL NO.	7464 , 7466	SECTION	PAGE	REVISION	REMARKS
BUYER'S MODEL NAME	COSMO G-2,CB-2,3		2-1		
FACTORY MODEL	464x0 , 464x1 , 464x2				
	466x0 , 466x1 , 466x2				
ORIGINAL ISSUE	JULY , 2005	SERIAL NO.			

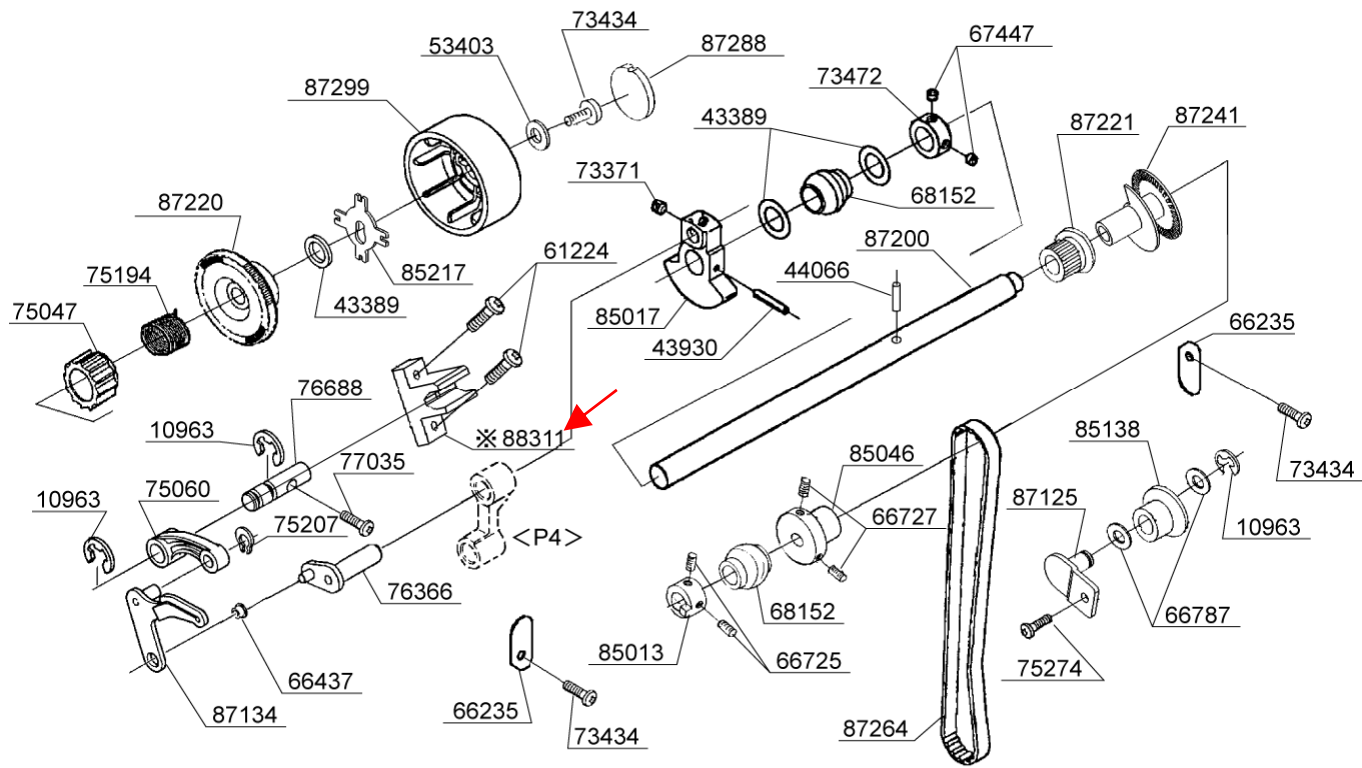
PART NO.	DESCRIPTION
10963	E6 CLIP-ON-WASHER
43389	THRUST WASHER
43930	SPRING PIN
44066	SPRING PIN
53403	WASHER
66235	SECURING PLATE
66437	BUSH
66725	M4 SCREW
66727	M4 SCREW
66787	WASHER
67447	M5 SCREW
68152	BALL BUSH
73371	M6 SCREW
73434	M4 PHILLIPS SCREW
73472	COLLAR
75047	CLUTCH
75060	TAKE-UP LEVER CRANK
75194	TORSION SPRING
75207	CS-CLIP
75274	M4 PHILLIPS SCREW
76366	CRANK SHAFT
76688	SHAFT
77035	M4 PHILLIPS SCREW
85013	POSITIONING COLLAR
85017	BALANCER
85046	COLLAR
85138	TENSION ROLLER
85217	RETAINER
87125	IDLER PULLEY BRACKET
87134	TAKE-UP LEVER
87200	MAIN SHAFT
87220	BELT PULLEY
87221	UPPER TIMING BELT GEAR
87241	ENCODER
87264	TIMING BELT
87288	PULLEY CAP
87299	PULLEY



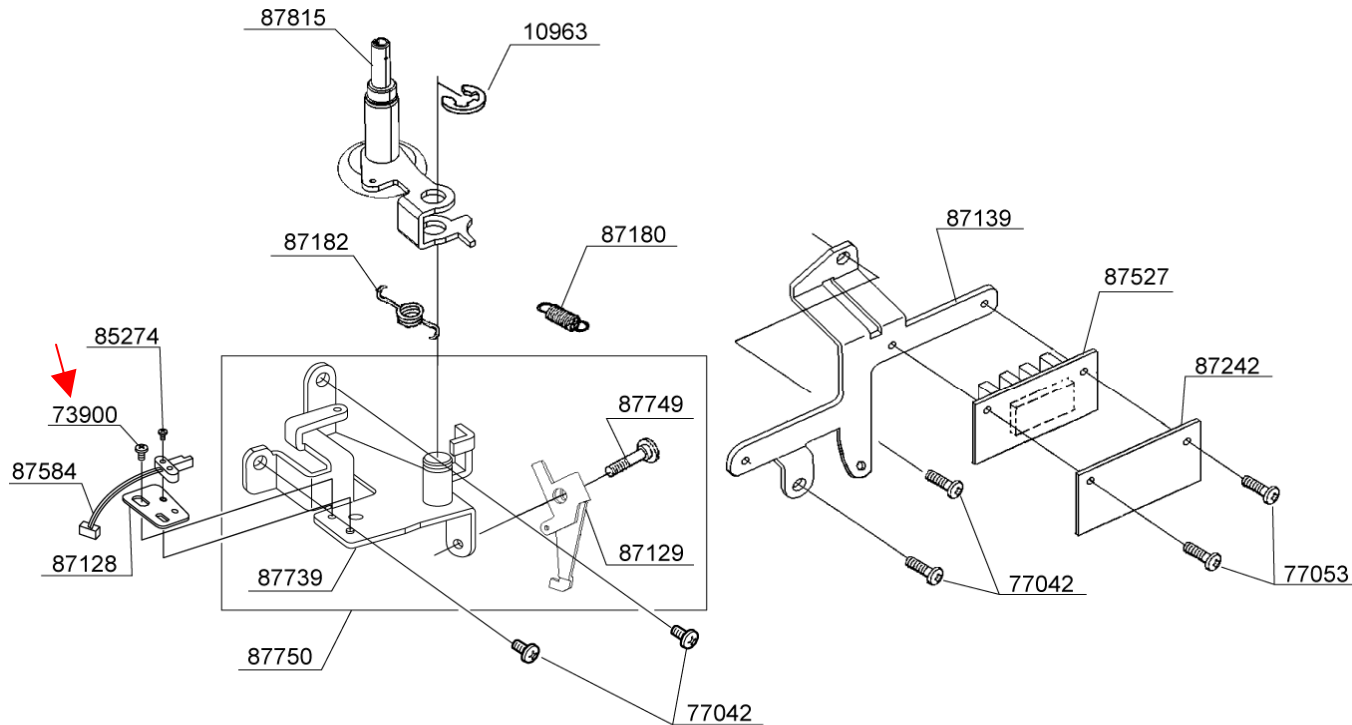
BUYER'S MODEL NO.	7464 , 7466	SECTION	PAGE	REVISION	REMARKS
BUYER'S MODEL NAME	COSMO G-2,CB-2,3		2-2		
FACTORY MODEL	464x2				
	466x2				
ORIGINAL ISSUE	MARCH , 2008	SERIAL NO.			

PART NO	DESCRIPTION
10963	E6 CLIP-ON-WASHER
43389	THRUST WASHER
43930	SPRING PIN
44066	SPRING PIN
53403	WASHER
61224	M4 PHILIPS SCREW
66235	SECURING PLATE
66437	BUSH
66725	M4 SCREW
66727	M4 SCREW
66787	WASHER
67447	M5 SCREW
68152	BALL BUSH
73371	M6 SCREW
73434	M4 PHILIPS SCREW
73472	COLLAR
75047	CLUTCH
75060	TAKE-UP LEVER CRANK
75194	TORSION SPRING
75207	CS-CLIP
75274	M4 PHILIPS SCREW
76366	CRANK SHAFT
76688	SHAFT
77035	M4 PHILIPS SCREW
85013	POSITIONING COLLAR
85017	BALANCER
85046	COLLAR
85138	TENSION ROLLER
85217	RETAINER
87125	IDLER PULLEY BRACKET
87134	TAKE-UP LEVER
87200	MAIN SHAFT
87220	BELT PULLEY
87221	UPPER TIMING BELT GEAR
87241	ENCODER
87264	TIMING BELT
87288	PULLEY CAP
87299	PULLEY
88311	TAKE-UP LEVER SHAFT BLOCK

NOTE : PARTS NUMBER WITH ※ MARKS ARE FOR MACHINES SERIAL NUMBERS WITH "2" AT FIRST DIGIT.



BUYER'S MODEL NO.	7464 , 7466	SECTION		PAGE		REVISION	AUGUST , 2006	REMARKS		PART NO.	10963	DESCRIPTION	E6 CLIP-ON-WASHER
BUYER'S MODEL NAME	COSMO G-2,CB-2,3			3		MARCH , 2008				73900	M3 PHILLIPS SCREW		
FACTORY MODEL	464x0 , 464x1 , 464x2									77042	M4 PHILLIPS SCREW		
	466x0 , 466x1 , 466x2									77053	M3 PHILLIPS SCREW		
ORIGINAL ISSUE	JULY , 2005	SERIAL NO.							85274	M2 SCREW			

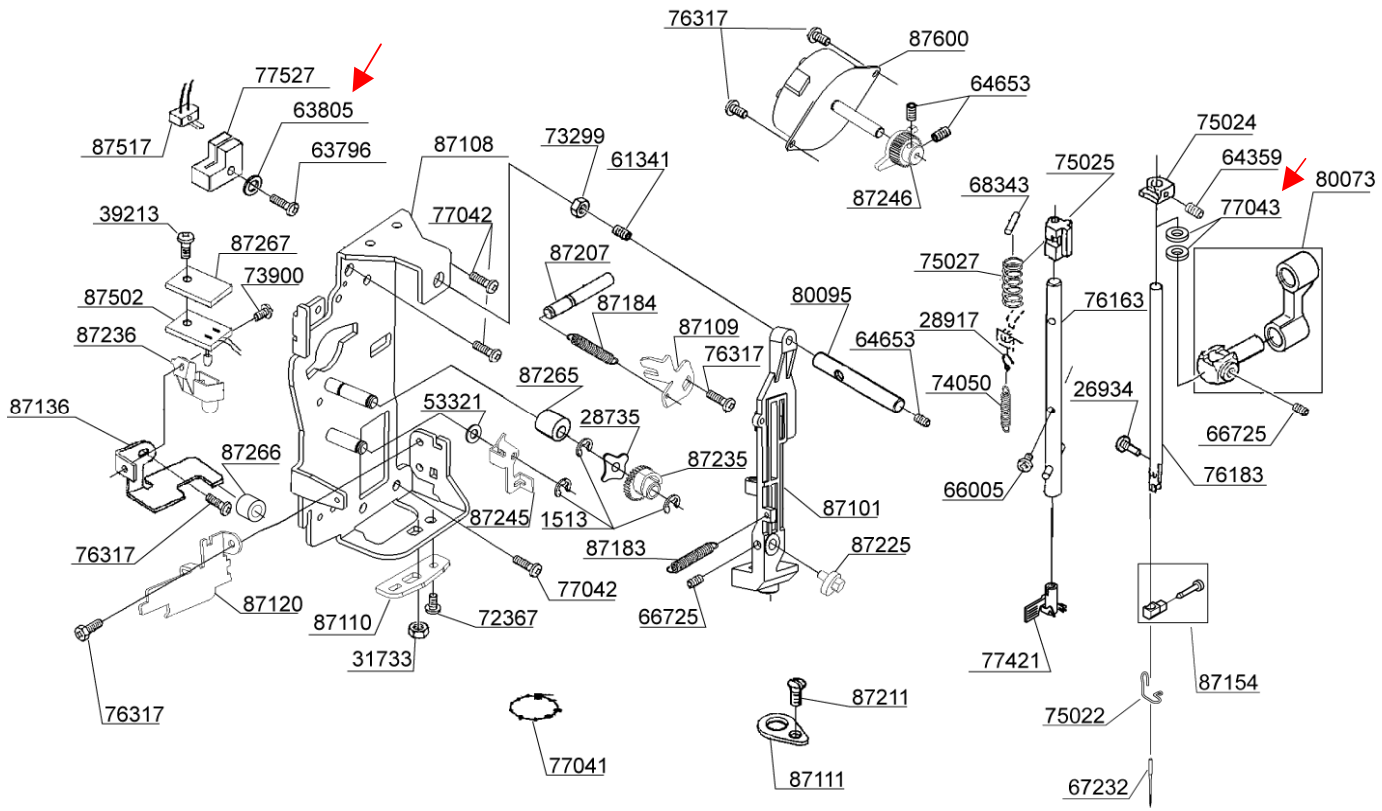


When you order BOBBIN WINDER UNIT, check first if it is made of metal or plastic.

1. If it is of metal:
order both bobbin wider unit #87815 and bobbin winder bracket unit #87750.
2. If it is of plastic:
order bobbin winder unit #87815 only.

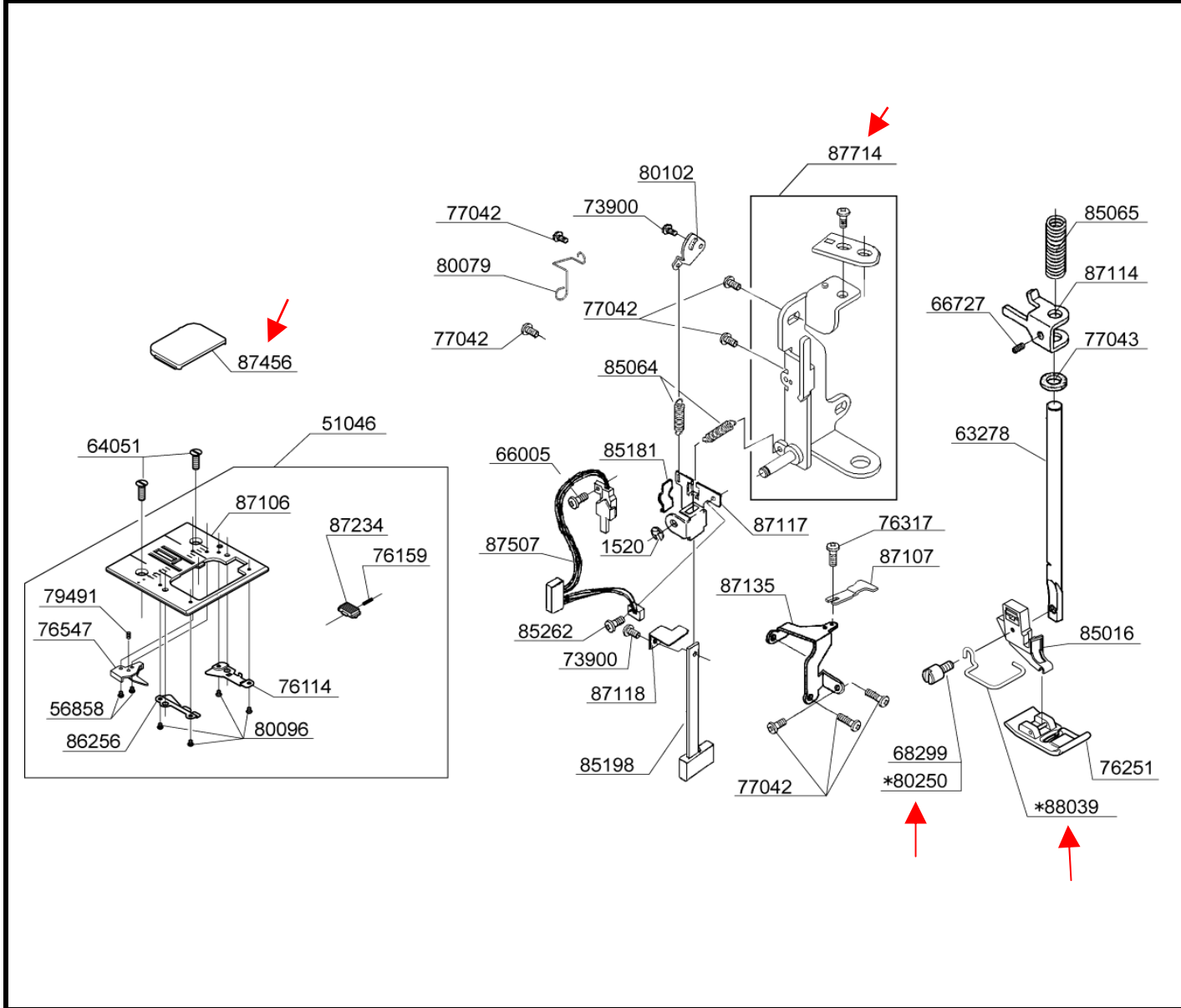
PART NO.	DESCRIPTION
10963	E6 CLIP-ON-WASHER
73900	M3 PHILLIPS SCREW
77042	M4 PHILLIPS SCREW
77053	M3 PHILLIPS SCREW
85274	M2 SCREW
87128	MOUNTING BRACKET
87129	RETAINER
87139	MOUNTING BRACKET
87180	EXTENSION SPRING
87182	TORSION SPRING
87242	INSULATION SHEET
87527	PHOTO SENSOR CIRCUIT BOARD
87584	SWITCH HARNESS
87739	BOBBIN WINDER BRACKET
87749	M3 SHOULDER SCREW
87750	BOBBIN WINDER BRACKET UNIT
87815	BOBBIN WINDER UNIT

BUYER'S MODEL NO.	7464 , 7466	SECTION	PAGE	REVISION	REMARKS	PART NO	DESCRIPTION
BUYER'S MODEL NAME	COSMO G-2,CB-2,3		4	AUGUST, 2006		1513	E4 CLIP-ON-WASHER
FACTORY MODEL	464x0 , 464x1 , 464x2 466x0 , 466x1 , 466x2			MARCH , 2008		26934	#8 SCREW
ORIGINAL ISSUE	JULY , 2005	SERIAL NO.				28735	CRINKLE WASHER



26934	#8 SCREW
28735	CRINKLE WASHER
28917	HOOK FOR SPRING
31733	M3 NUT
39213	M3 SCREW
53321	THRUST WASHER
61341	M4 SCREW
63796	M3 SCREW
64359	M4 SCREW
64653	M3 SCREW
66005	M2 PHILLIPS SCREW
66725	M4 SCREW
67232	NEEDLE
68343	PIN
72367	M4 CP SCREW
73299	M4 TORQUE NUT
73900	M3 PHILLIPS SCREW
74050	EXTENSION SPRING
75022	THREAD GUIDE
75024	STOPPER
75025	GUIDE BLOCK
75027	COMPRESSION SPRING
76163	THREADER SHAFT SET
76183	NEEDLE BAR
76317	M3 PHILLIPS SCREW
77041	UNITY FASTENER
77042	M4 PHILLIPS SCREW
77043	FELT WASHER
77421	THREADER ASSEMBLY
77527	SENSOR COVER
80073	NEEDLE BAR CRANK SET
80095	STRAIGHT PIN
87101	NEEDLE BAR SUPPORT
87108	NEEDLE BAR SUPPORT BRACKET
87109	SECURING PLATE
87110	NEEDLE BAR ADJUSTING PLATE
87111	NEEDLE BAR SWING BRACKET
87120	THREAD GUIDE PLATE
87136	L-R LIMITER
87154	NEEDLE CLAMP SET
87183	SPRING
87184	SPRING
87207	STRAIGHT PIN
87211	M3 SCREW
87225	ECCENTRIC CAM
87235	ZIGZAG CAM WITH GEAR
87236	LED LIGHT COVER
87245	BELL CLANK FOR ZIGZAG
87246	PINION GEAR
87265	SPACER
87266	TUBE
87267	INSULATION SHEET
87502	LED LIGHT CIRCUIT BOARD
87517	SWITCH HARNESS FOR ZIGZAG
87600	STEPPING MOTOR

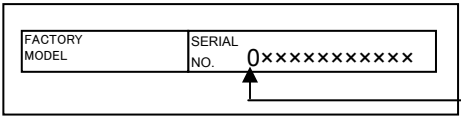
BUYER'S MODEL NO.	7464 , 7466	SECTION	PAGE	REVISION	REMARKS	PART NO.	DESCRIPTION
BUYER'S MODEL NAME	COSMO G-2,CB-2,3		5	AUGUST , 2006		1520	E3 CLIP-ON-WASHER
FACTORY MODEL	464x0 , 464x1 , 464x2			MARCH , 2008		51046	NEEDLE PLATE SET
	466x0 , 466x1 , 466x2					56858	M2 PHILLIPS SCREW
ORIGINAL ISSUE	JULY , 2005	SERIAL NO.				63278	PRESSER BAR



64051	M4 SCREW
66005	M2 PHILLIPS SCREW
66727	M4 SCREW
68299	#7 SCREW FOR SHANK
73900	M3 PHILLIPS SCREW
76114	COVER GUIDE (R)
76159	COMPRESSION LEVER
76251	ZIGZAG PRESSER FOOT
76317	M3 PHILLIPS SCREW
76547	THREAD CONTROL PLATE
77042	M4 PHILLIPS SCREW
77043	FELT
79491	SCREW
80079	CORD GUIDE
80096	M2 SCREW
80102	CONTROL PLATE
85016	PRESSER FOOT HOLDER
85064	EXTENSION SPRING
85065	COMPRESSION SPRING
85181	LEAF SPRING
85198	BH PLATE (A)
85262	M2 SCREW
86256	COVER GUIDE (L)
87106	NEEDLE PLATE
87107	BOBBIN CASE STOPPER
87114	PRESSURE BAR GUIDE
87117	BH PLATE B
87118	BH PLATE C
87135	BRACKET
87234	RELEASE LEVER
87456	NEEDLE COVER PLATE
87507	BH SWITCH HARNESS
87714	PRESSURE SUPPORT PLATE UNIT
*88039	FINGER GUARD (ITALY ONLY)
*80250	#7 SCREW FOR SHANK (ITALY ONLY)

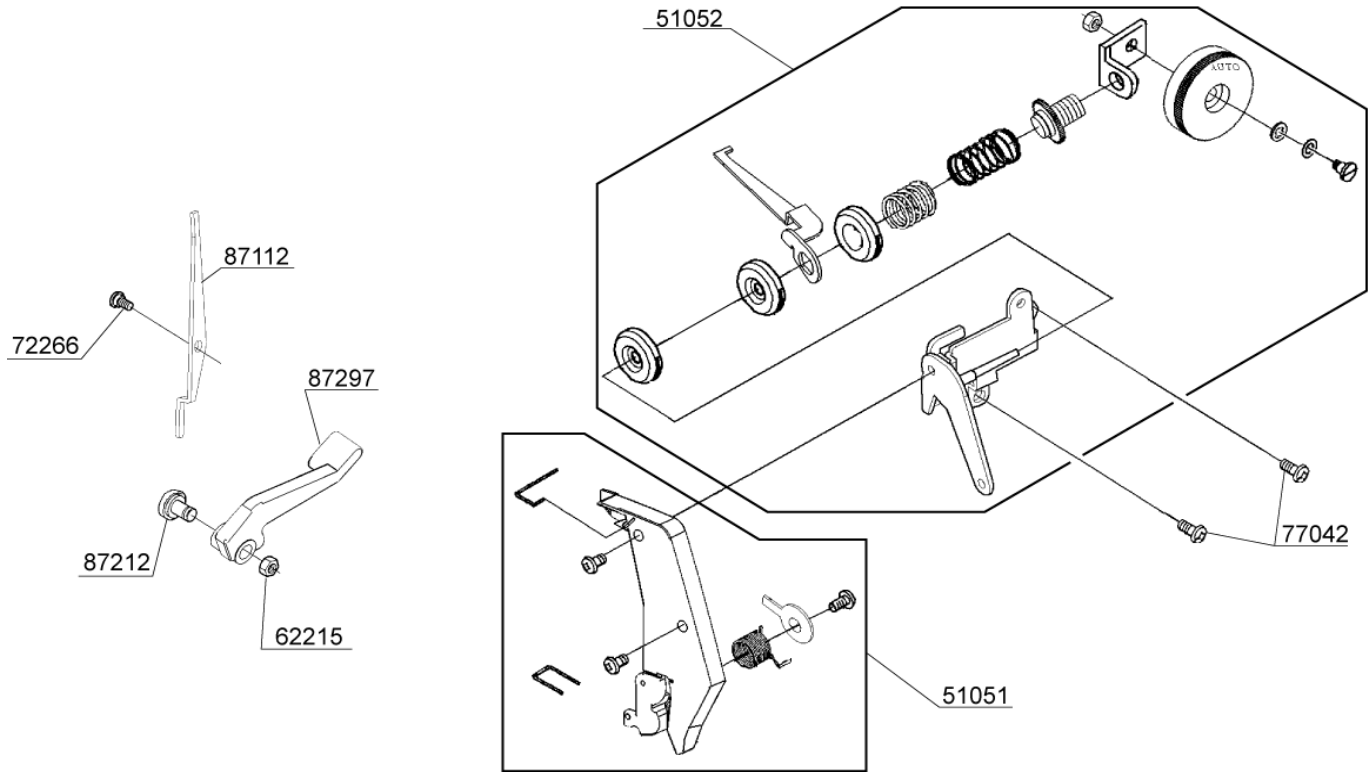
BUYER'S MODEL NO.	7464 , 7466	SECTION	PAGE	REVISION	REMARKS	PART NO.	DESCRIPTION
BUYER'S MODEL NAME	COSMO G-2,CB-2,3		6-1			51051	THREAD GUIDE PLATE ASSY
FACTORY MODEL	464x0 , 464x1					51052	TENSION ASSY
	466x0 , 466x1					62215	M4 NUT
ORIGINAL ISSUE	JULY , 2005	SERIAL NO.				72266	M4 STUD SCREW

77042	M4 PHILLIPS SCREW
87112	TENSION RELEASE LEVER
87212	M4 SCREW
87297	PRESSURE BAR LIFTER



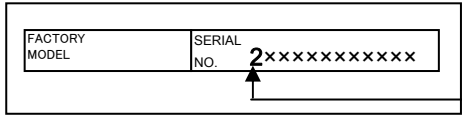
NOTE : PARTS NUMBER WITH ※ MARKS ARE FOR MACHINES SERIAL NUMBERS WITH "0" OR "1"

FIRST DIGIT
0 or 1

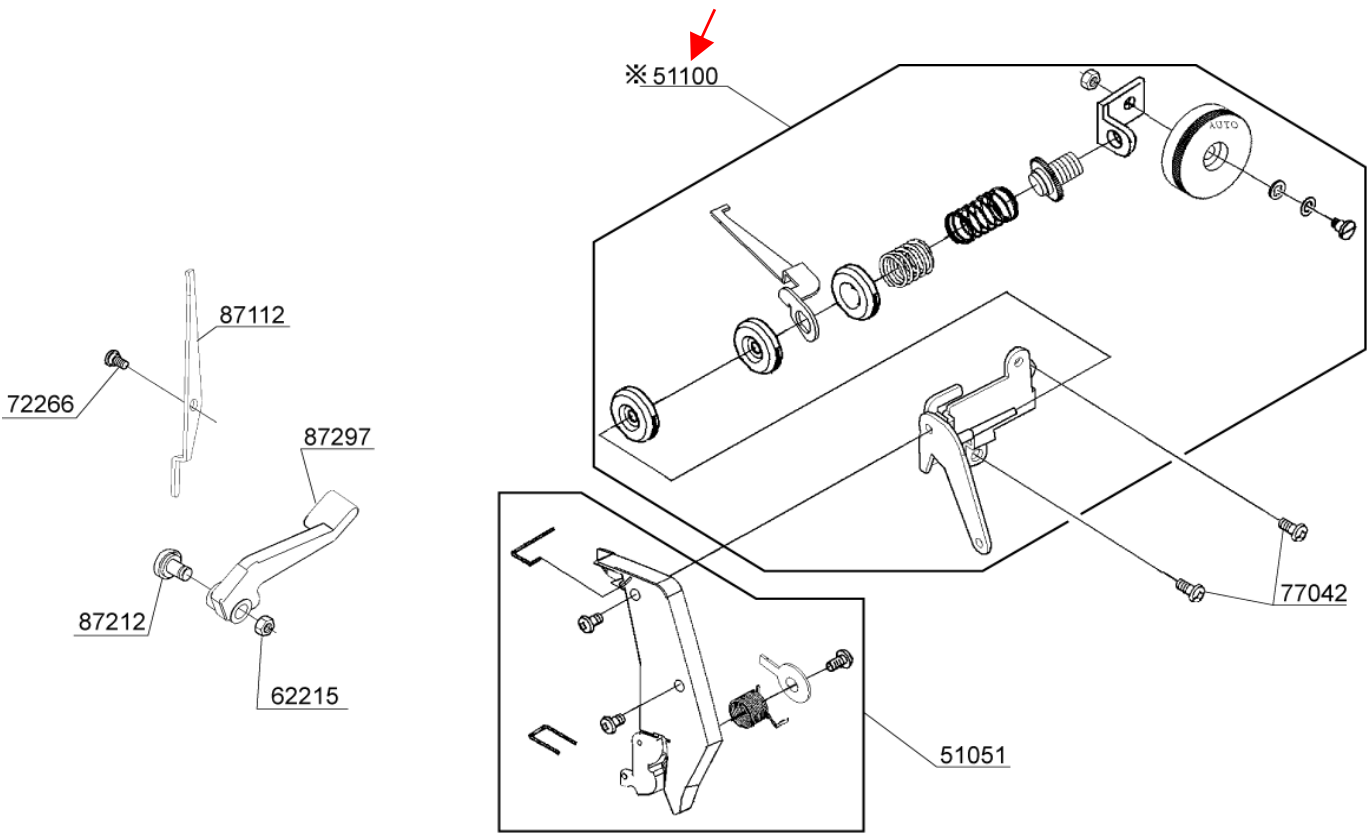


BUYER'S MODEL NO.	7464 , 7466	SECTION	PAGE	REVISION	REMARKS
BUYER'S MODEL NAME	COSMO G-2,CB-2,3		6-2		
FACTORY MODEL	464x2				
	466x2				
ORIGINAL ISSUE	MARCH ,2008	SERIAL NO.			

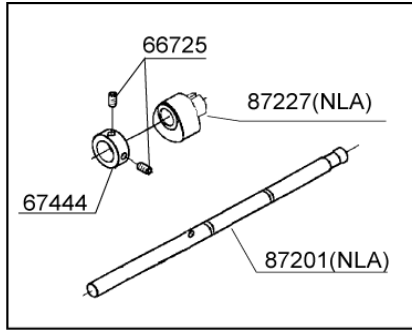
PART NO.	DESCRIPTION
51051	THREAD GUIDE PLATE ASSY
51100	TENSION ASSY
62215	M4 NUT
72266	M4 STUD SCREW
77042	M4 PHILLIPS SCREW
87112	TENSION RELEASE LEVER
87212	M4 SCREW
87297	PRESSURE BAR LIFTER



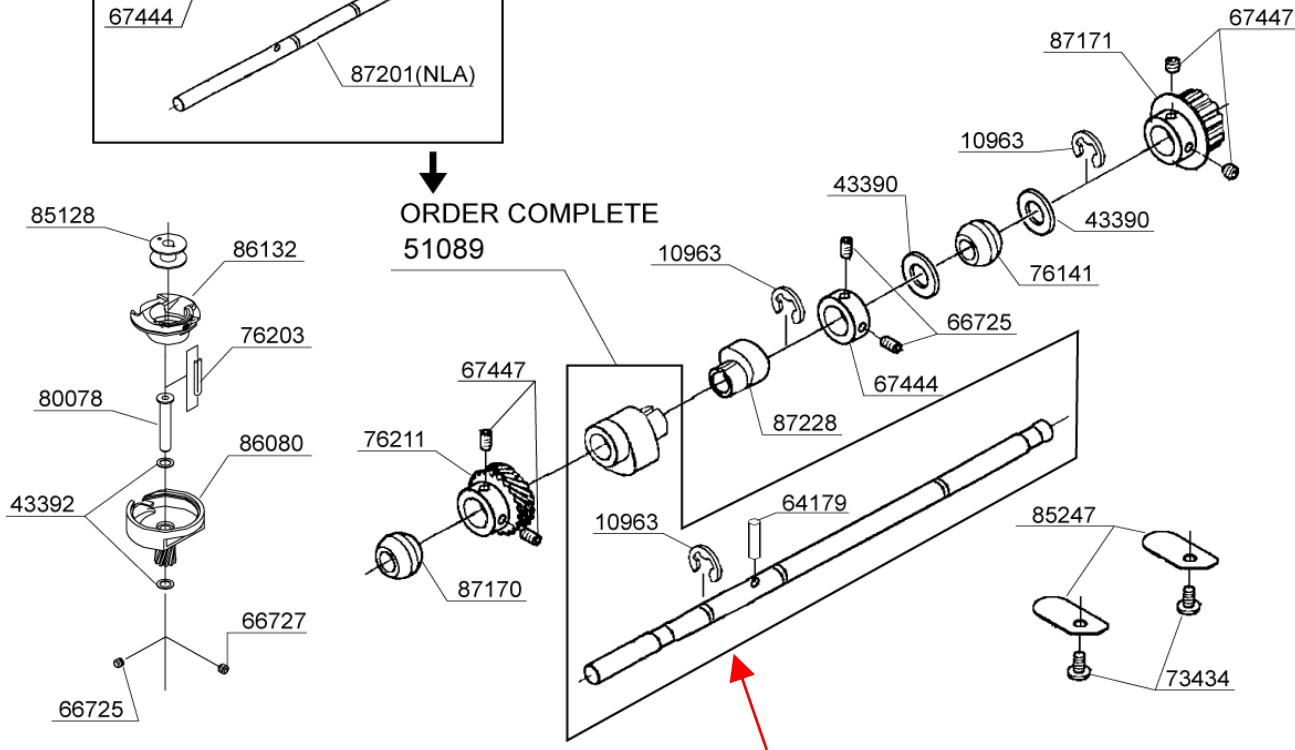
NOTE : PARTS NUMBER WITH ※ MARKS ARE FOR MACHINES SERIAL NUMBERS WITH "2" AT FIRST DIGIT.



BUYER'S MODEL NO.	7464 , 7466	SECTION	PAGE	REVISION	REMARKS	PART NO.	DESCRIPTION
BUYER'S MODEL NAME	COSMO G-2,CB-2,3		7	AUGUST , 2006		10963	E6 CLIP-ON-WASHER
				MARCH , 2008		43390	THRUST WASHER
						43392	THRUST WASHER
FACTORY MODEL	464x0 , 464x1 , 464x2 466x0 , 466x1 , 466x2					51089	LOWER SHAFT WITH LIFTING CAM SET
ORIGINAL ISSUE	JULY , 2005	SERIAL NO.				64179	SPRING PIN

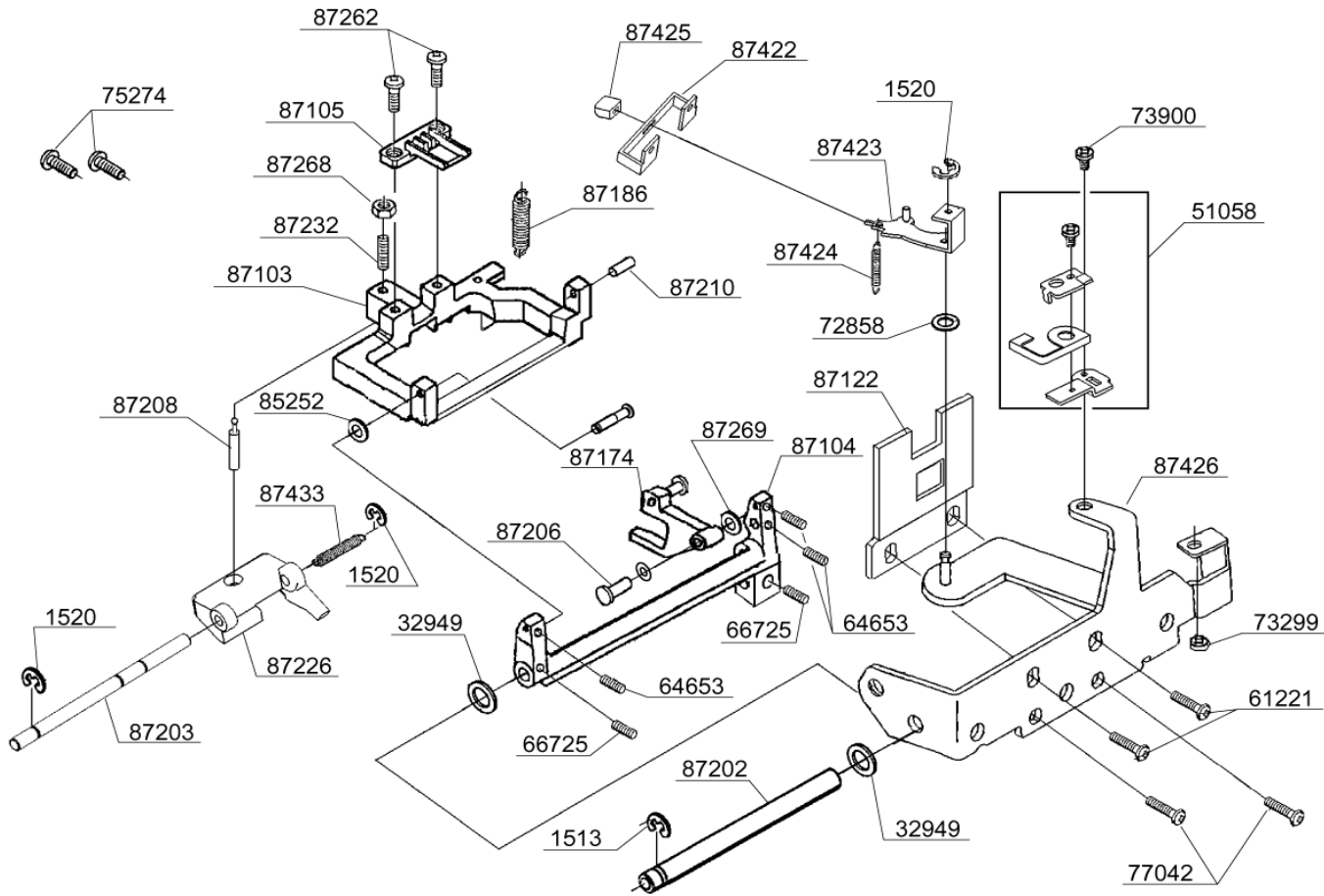


ORDER COMPLETE
51089



PART NO.	DESCRIPTION
10963	E6 CLIP-ON-WASHER
43390	THRUST WASHER
43392	THRUST WASHER
51089	LOWER SHAFT WITH LIFTING CAM SET
64179	SPRING PIN
66725	M4 SCREW
66727	M4 SCREW
67444	COLLAR
67447	M5 SCREW
73434	M4 PHILLIPS SCREW
76141	BALL METAL
76203	OILING CORD
76211	BEVEL GEAR
80078	SHUTTLE RACE SHAFT
85128	BOBBIN
85247	SECURING PLATE
86080	SHUTTLE RACE
86132	BOBBIN CASE
87170	BALL METAL
87171	TIMING BELT GEAR (LOWER)
87201	LOWER STRAIGHT SHAFT (NLA) →
87227	LIFTING CAM (NLA) →
87228	FEED CAM

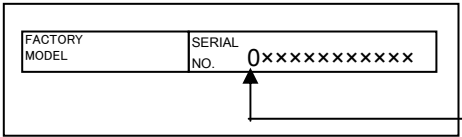
BUYER'S MODEL NO.	7464 , 7466	SECTION	PAGE	REVISION	REMARKS	PART NO.	DESCRIPTION
BUYER'S MODEL NAME	COSMO G-2,CB-2,3		8			1513	E4 CLIP-ON-WASHER
FACTORY MODEL	464x0 , 464x1 , 464x2					1520	E3 CLIP-ON-WASHER
	466x0 , 466x1 , 466x2					32949	WASHER
ORIGINAL ISSUE	JULY , 2005	SERIAL NO.				51058	RETAINER SET



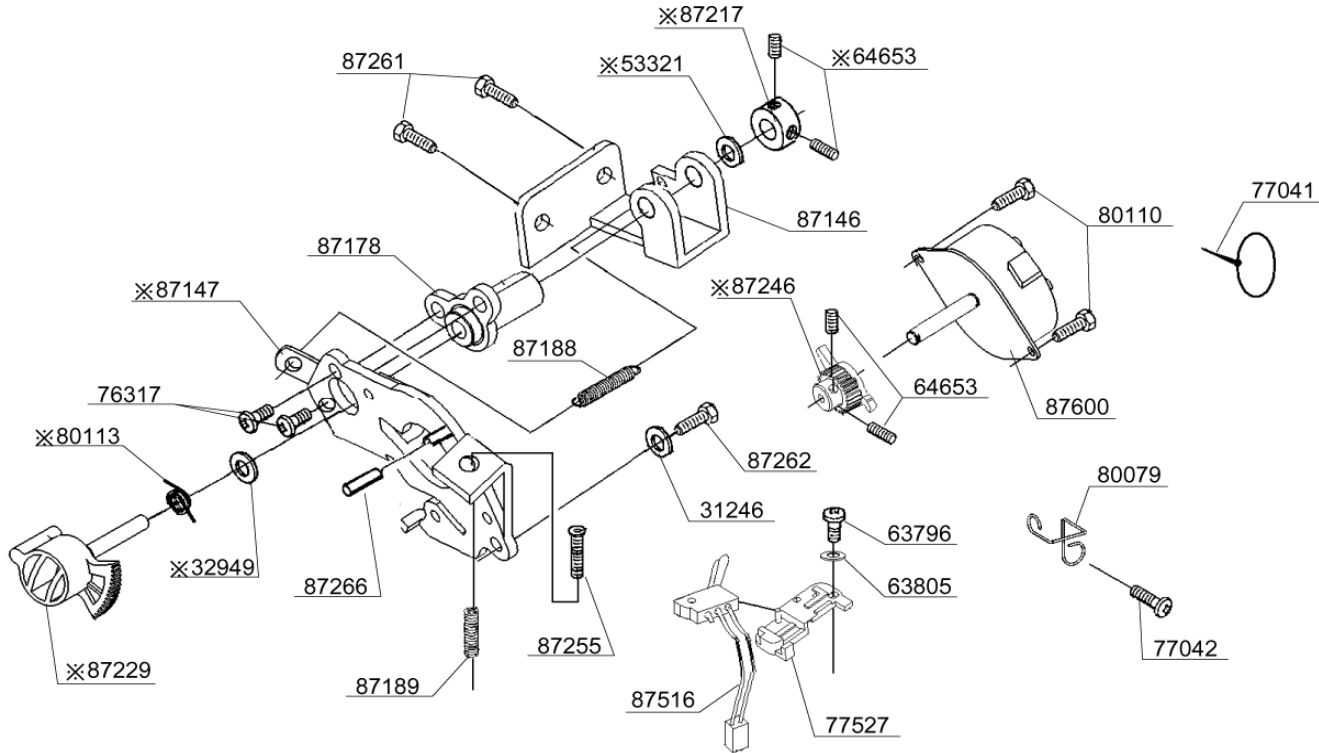
PART NO.	DESCRIPTION
1513	E4 CLIP-ON-WASHER
1520	E3 CLIP-ON-WASHER
32949	WASHER
51058	RETAINER SET
61221	M4 PHILLIPS SCREW
64653	M3 SCREW
66725	M4 SCREW
72858	WASHER
73299	M4 TORQUE NUT
73900	M3 PHILLIPS SCREW
75274	M4 PHILLIPS SCREW
76132	SHAFT
77042	M4 PHILLIPS SCREW
85252	WASHER
87103	FEED DOG BASE
87104	FEED DOG BASE SUPPORT
87105	FEED DOG
87122	SUPPORT PLATE
87174	FORKED CRANK
87186	TORSION SPRING
87202	SHAFT
87203	SHAFT
87206	PIN
87208	BALL HEADED PIN
87210	PIN
87226	VERTICAL FEED BLOCK
87232	M6 STUD SCREW
87262	M3 CP SCREW
87268	M6 NUT
87269	WASHER
87422	DROP GUIDE
87423	DROP LEVER
87424	TORSION SPRING
87425	DROP KNOB
87426	SECURING BRACKET
87433	TORSION SPRING

BUYER'S MODEL NO.	7464 , 7466	SECTION	PAGE	REVISION	REMARKS
BUYER'S MODEL NAME	COSMO G-2,CB-2,3		9-1		
FACTORY MODEL	464x0				
	466x0				
ORIGINAL ISSUE	JULY , 2005	SERIAL NO.			

NOTE : PARTS NUMBER WITH ※ MARKS ARE FOR MACHINES SERIAL NUMBERS WITH "0" AT FIRST DIGIT.

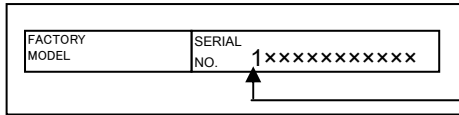


FIRST DIGIT



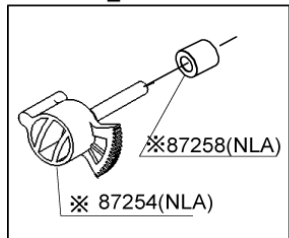
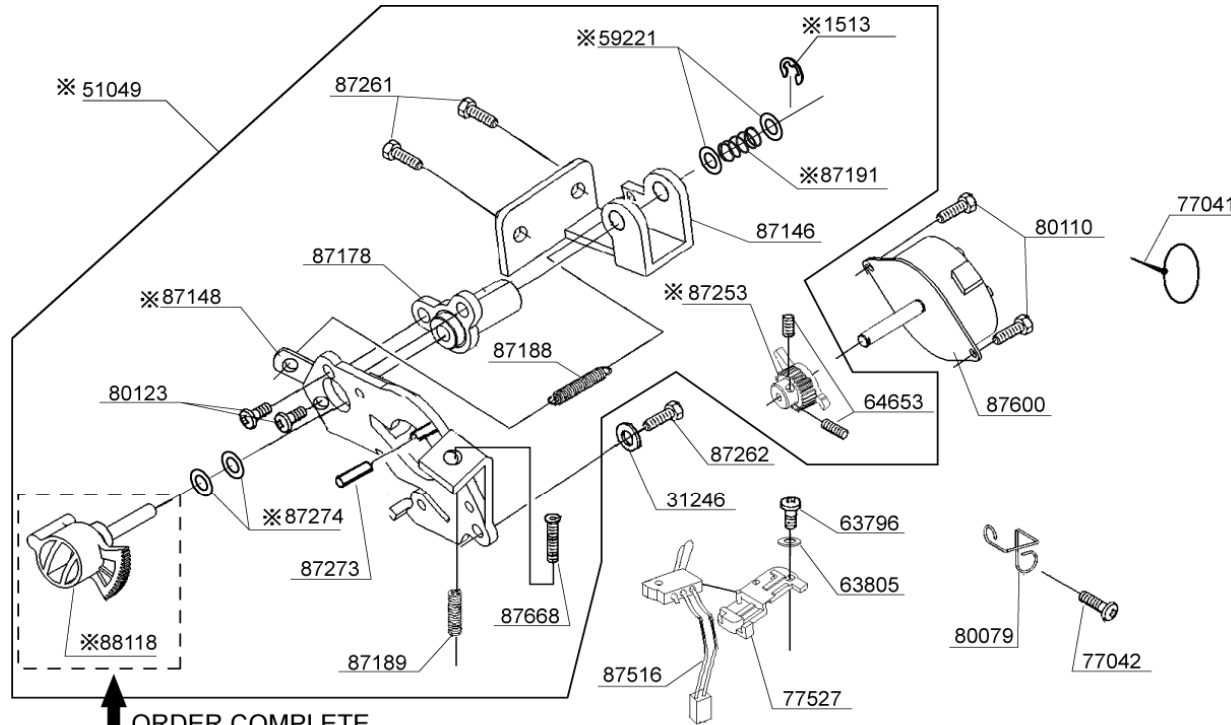
PART NO.	DESCRIPTION
31246	WASHER
53321	THRUST WASHER
63796	M3 SCREW
63805	WASHER
64653	M3 SCREW
76317	M3 PHILLIPS SCREW
77041	UNITY FASTENER
77042	M4 PHILLIPS SCREW
77527	SENSOR COVER
80079	CORD GUIDE
80110	M3 PHILLIPS SCREW
87146	BRACKET
87178	FEED REGULATOR SHAFT METAL BUSH
87188	EXTENSION SPRING
87189	COMPRESSION SPRING
87255	M4 BOLT
87261	CP BOLT
87262	M3 CP SCREW
87266	PIN
87516	SWITCH HARNESS
87600	STEPPING MOTOR
※32949	WASHER
※80113	TORSION SPRING
※87147	STEPPING MOTOR BRACKET
※87217	COLLAR
※87229	FEED REGULATOR
※87246	PINION GEAR

BUYER'S MODEL NO.	7464 , 7466	SECTION		PAGE		REVISION		REMARKS		PART NO.	DESCRIPTION
BUYER'S MODEL NAME	COSMO G-2,CB-2,3			9-2		AUGUST , 2006				31246	WASHER
						MARCH , 2008				63796	M3 SCREW
FACTORY MODEL	464x1 , 464x2 466x1 , 466x2									63805	WASHER
ORIGINAL ISSUE	JULY , 2005				SERIAL NO.				64653	M3 SCREW	



FIRST DIGIT
1 OR 2

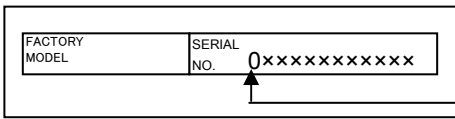
NOTE : PARTS NUMBER WITH ※ MARKS ARE FOR MACHINES SERIAL NUMBERS WITH "1"OR "2" AT FIRST DIGIT



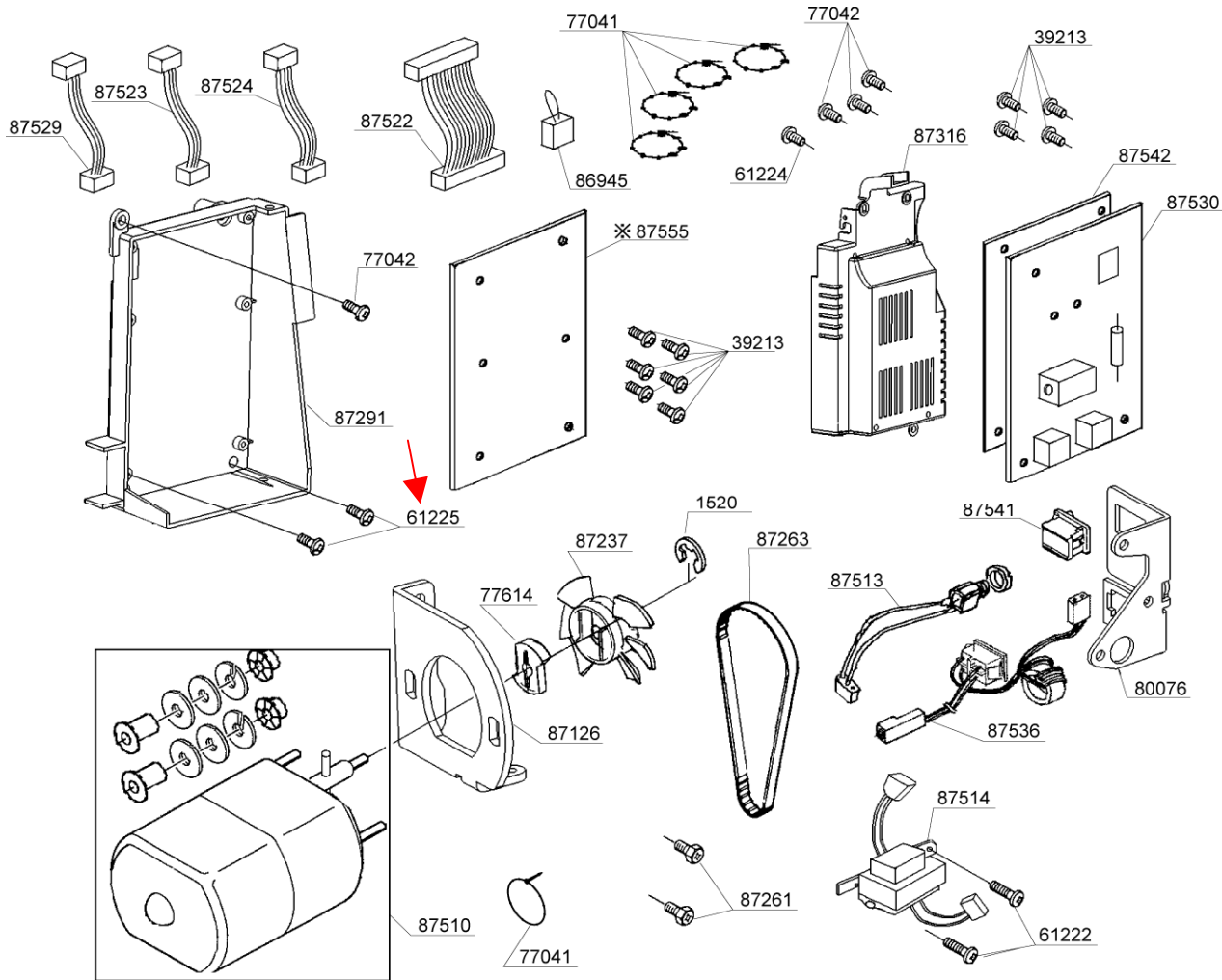
PART NO.	DESCRIPTION
31246	WASHER
63796	M3 SCREW
63805	WASHER
64653	M3 SCREW
77041	UNITY FASTENER
77042	M4 PHILLIPS SCREW
77527	SENSOR COVER
80079	CORD GUIDE
80110	M3 CP SCREW
80123	M3 SCREW
87146	BRACKET
87178	FEED REGULATOR SHAFT METAL BUSH
87188	EXTENSION SPRING
87189	COMPRESSION SPRING
87261	CP BOLT
87262	M3 CP SCREW
87273	PIN
87516	SWITCH HARNESS
87600	STEPPING MOTOR
※1513	E4 CLIP-ON-WASHER
※51049	FEED REGULATOR UNIT
※59221	WASHER
※87148	STEPPING MOTOR BRACKET
※87191	COMPRESSION SPRING
※87253	PINION GEAR
※87254	FEED REGULATOR (NLA)→ ORDER COMPLETE 88118
※87258	COLLAR (NLA)→ ORDER COMPLETE 88118
※87274	WASHER
※87668	M4 BOLT
※88118	FEED REGULATOR

BUYER'S MODEL NO.	7464 , 7466	SECTION	PAGE	REVISION	REMARKS	PART NO.	DESCRIPTION
BUYER'S MODEL NAME	COSMO G-2,CB-2,3		10-1	AUGUST , 2006		1520	E3 CLIP-ON-WASHER
FACTORY MODEL	464x0			MARCH , 2008		39213	M3 SCREW
	466x0					61222	M4 PHILLIPS SCREW
ORIGINAL ISSUE	JULY , 2005	SERIAL NO.				61224	M4 PHILLIPS SCREW
						61225	M4 PHILLIPS SCREW

120V



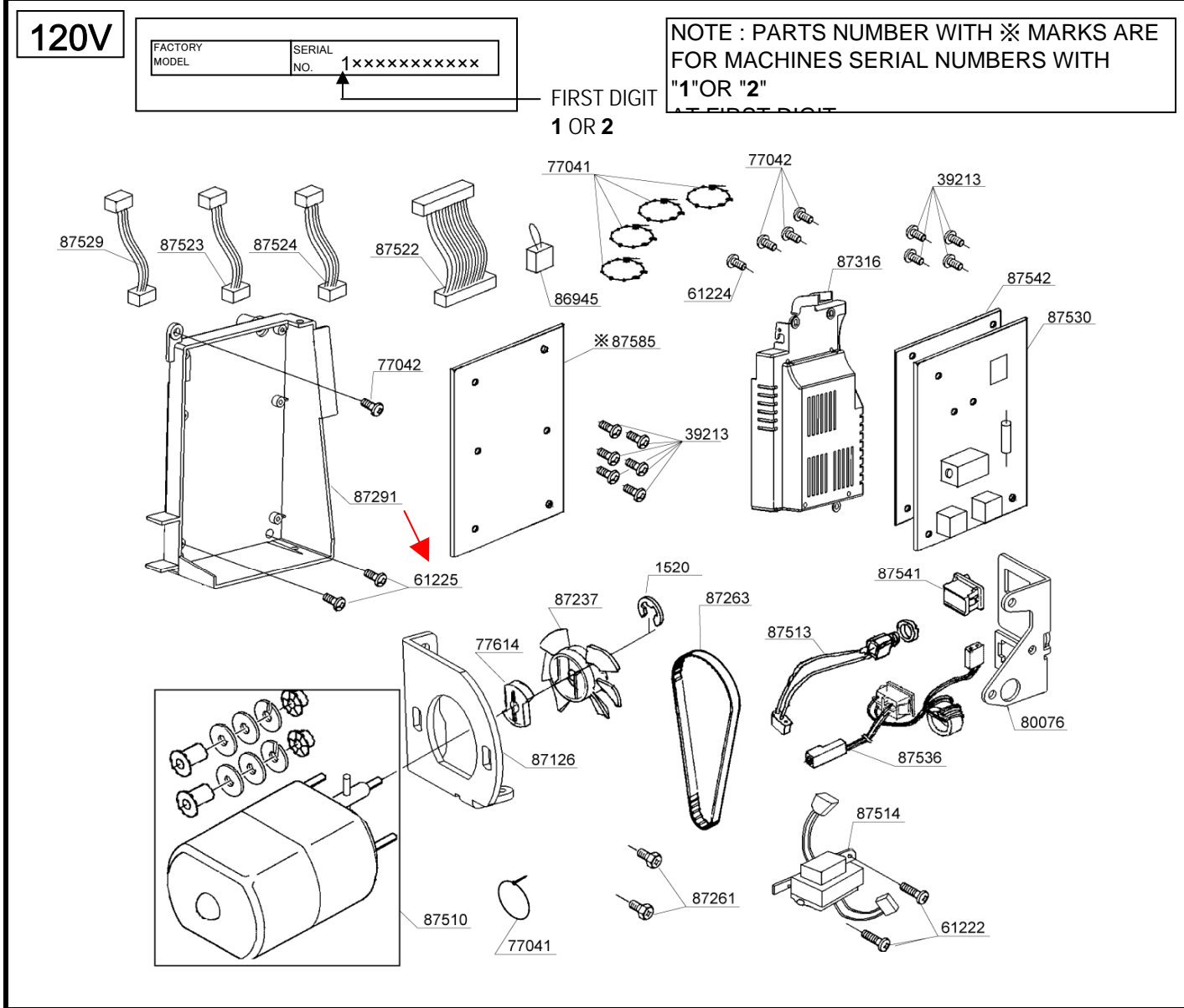
NOTE : PARTS NUMBER WITH ※ MARKS ARE FOR MACHINES SERIAL NUMBERS WITH "0" AT FIRST DIGIT.



1520	E3 CLIP-ON-WASHER
39213	M3 SCREW
61222	M4 PHILLIPS SCREW
61224	M4 PHILLIPS SCREW
61225	M4 PHILLIPS SCREW
77041	UNITY FASTENER
77042	M4 PHILLIPS SCREW
77614	GEAR CLUTCH
80076	SWITCH BRACKET
86945	JUMPER HARNESS
87126	MAIN MOTOR BRACKET
87237	MOTOR FAN
87261	CP BOLT
87263	DRIVING BELT
87291	CPU CIRCUIT BOARD BOX
87316	AC CIRCUIT BOARD BOX
87510	MAIN MOTOR
87513	PIN-JACK HARNESS
87514	TRANSFORMER
87522	13P CORD HARNESS
87523	4P CORD HARNESS
87524	5P CORD HARNESS
87529	4P CORD HARNESS
87530	CIRCUIT BOARD
87536	INLET HARNESS
87541	SWITCH
87542	INSULATION SHEET
※87555	CPU CIRCUIT BOARD

BUYER'S MODEL NO.	7464 , 7466	SECTION	PAGE	REVISION	REMARKS
BUYER'S MODEL NAME	COSMO G-2,CB-2,3		10-2	AUGUST , 2006	
				MARCH , 2008	
FACTORY MODEL	464x1 , 464x2 466x1 , 466x2				
ORIGINAL ISSUE	JULY , 2005	SERIAL NO.			

PART NO.	DESCRIPTION
1520	E3 CLIP-ON-WASHER
39213	M3 SCREW
61222	M4 PHILLIPS SCREW
61224	M4 PHILLIPS SCREW
61225	M4 PHILLIPS SCREW
77041	UNITY FASTENER
77042	M4 PHILLIPS SCREW
77614	GEAR CLUTCH
80076	SWITCH BRACKET
86945	JUMPER HARNESS
87126	MAIN MOTOR BRACKET
87237	MOTOR FAN
87261	CP BOLT
87263	DRIVING BELT
87291	CPU CIRCUIT BOARD BOX
87316	AC CIRCUIT BOARD BOX
87510	MAIN MOTOR
87513	PIN-JACK HARNESS
87514	TRANSFORMER
87522	13P CORD HARNESS
87523	4P CORD HARNESS
87524	5P CORD HARNESS
87529	4P CORD HARNESS
87530	CIRCUIT BOARD
87536	INLET HARNESS
87541	SWITCH
87542	INSULATION SHEET
※87585	CPU CIRCUIT BOARD



BUYER'S MODEL NO.	7464 , 7466	SECTION	PAGE	REVISION	REMARKS	PART NO.	DESCRIPTION
BUYER'S MODEL NAME	COSMO G-2,CB-2,3		10-3	AUGUST , 2006		1520	E3 CLIP-ON-WASHER
FACTORY MODEL	464x0			MARCH , 2008		39213	M3 SCREW
	466x0					61222	M4 PHILLIPS SCREW
ORIGINAL ISSUE	JULY , 2005		SERIAL NO.			61224	M4 PHILLIPS SCREW
						61225	M4 PHILLIPS SCREW

230V

FACTORY MODEL

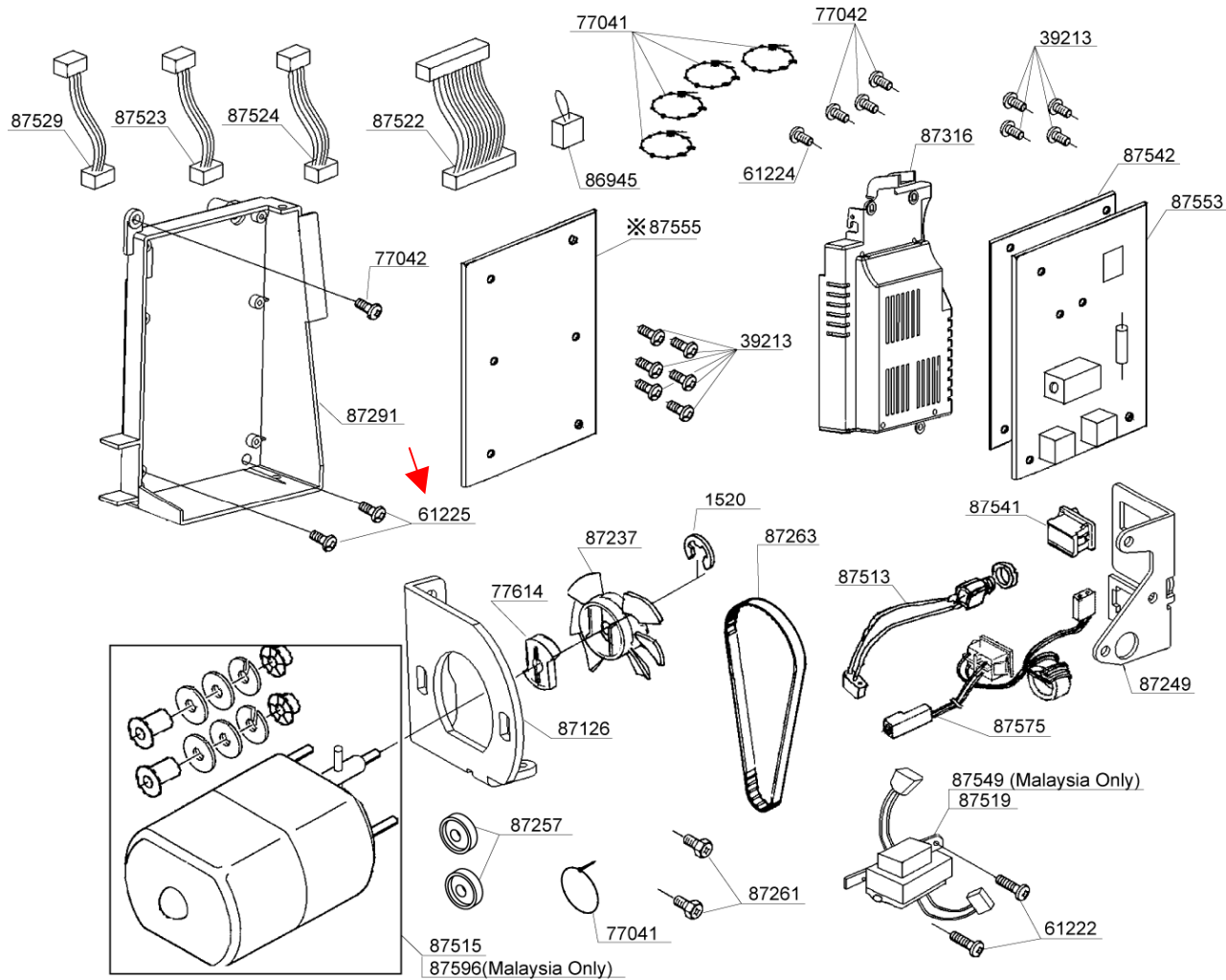
SERIAL NO.

0

XXXXXXXXXX

FIRST DIGIT

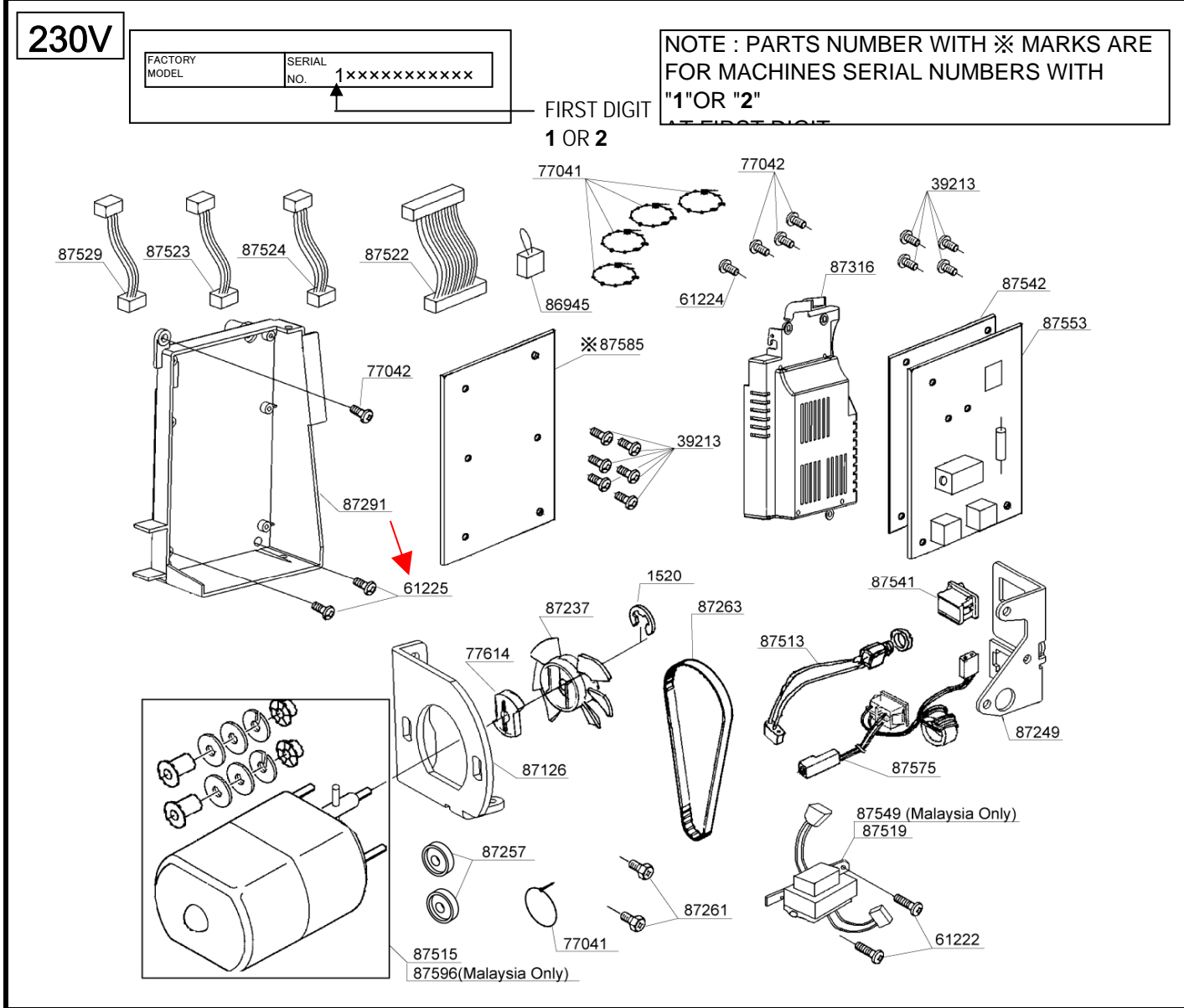
NOTE : PARTS NUMBER WITH ※ MARKS ARE FOR MACHINES SERIAL NUMBERS WITH "0" AT FIRST DIGIT.



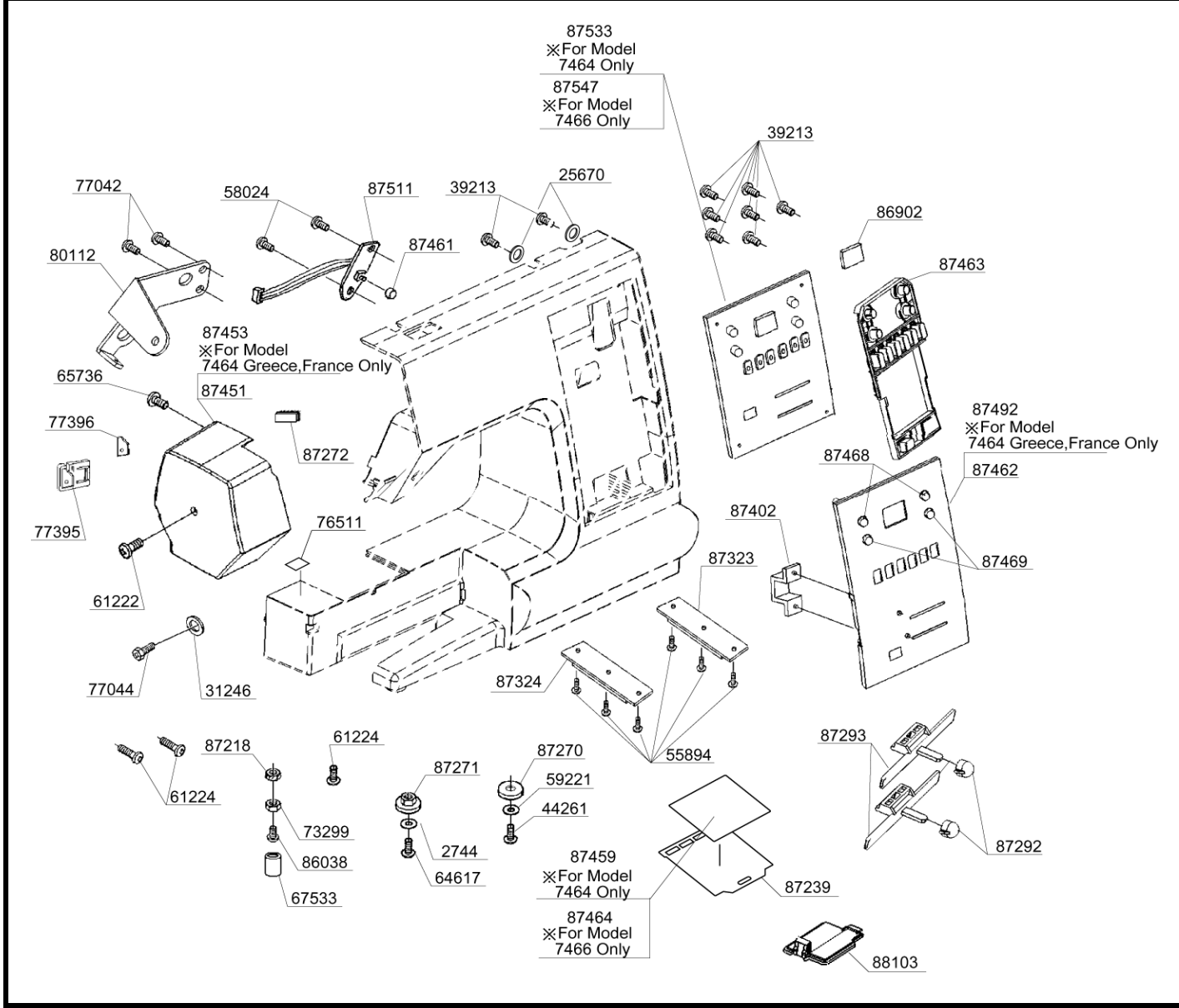
PART NO.	DESCRIPTION
1520	E3 CLIP-ON-WASHER
39213	M3 SCREW
61222	M4 PHILLIPS SCREW
61224	M4 PHILLIPS SCREW
61225	M4 PHILLIPS SCREW
77041	UNITY FASTENER
77042	M4 PHILLIPS SCREW
77614	GEAR CLUTCH
86945	JUMPER HARNESS
87126	MAIN MOTOR BRACKET
87237	MOTOR FAN
87249	SWITCH BRACKET
87257	BUSH
87261	CP BOLT
87263	DRIVING BELT
87291	CPU CIRCUIT BOARD BOX
87316	AC CIRCUIT BOARD BOX
87513	PIN-JACK HARNESS
87515	MAIN MOTOR
87519	TRANSFORMER
87522	13P CORD HARNESS
87523	4P CORD HARNESS
87524	5P CORD HARNESS
87529	4P CORD HARNESS
87541	SWITCH
87542	INSULATION SHEET
87549	TRANSFORMER (MALAYSIA ONLY)
87553	CIRCUIT BOARD
87575	INLET HARNESS
87596	MAIN MOTOR (MALAYSIA ONLY)
※87555	CPU CIRCUIT BOARD

BUYER'S MODEL NO.	7464 , 7466	SECTION	PAGE	REVISION	REMARKS
BUYER'S MODEL NAME	COSMO G-2,CB-2,3		10-4	AUGUST , 2006	
				MARCH , 2008	
FACTORY MODEL	464x1 , 464x2 466x1 , 466x2				
ORIGINAL ISSUE	JULY , 2005	SERIAL NO.			

PART NO	DESCRIPTION
1520	E3 CLIP-ON-WASHER
39213	M3 SCREW
61222	M4 PHILLIPS SCREW
61224	M4 PHILLIPS SCREW
61225	M4 PHILLIPS SCREW
77041	UNITY FASTENER
77042	M4 PHILLIPS SCREW
77614	GEAR CLUTCH
86945	JUMPER HARNESS
87126	MAIN MOTOR BRACKET
87237	MOTOR FAN
87249	SWITCH BRACKET
87257	BUSH
87261	CP BOLT
87263	DRIVING BELT
87291	CPU CIRCUIT BOARD BOX
87316	AC CIRCUIT BOARD BOX
87513	PIN-JACK HARNESS
87515	MAIN MOTOR
87519	TRANSFORMER
87522	13P CORD HARNESS
87523	4P CORD HARNESS
87524	5P CORD HARNESS
87529	4P CORD HARNESS
87541	SWITCH
87542	INSULATION SHEET
87549	TRANSFORMER (MALAYSIA ONLY)
87553	CIRCUIT BOARD
87575	INLET HARNESS
87596	MAIN MOTOR (MALAYSIA ONLY)
※87585	CPU CIRCUIT BOARD

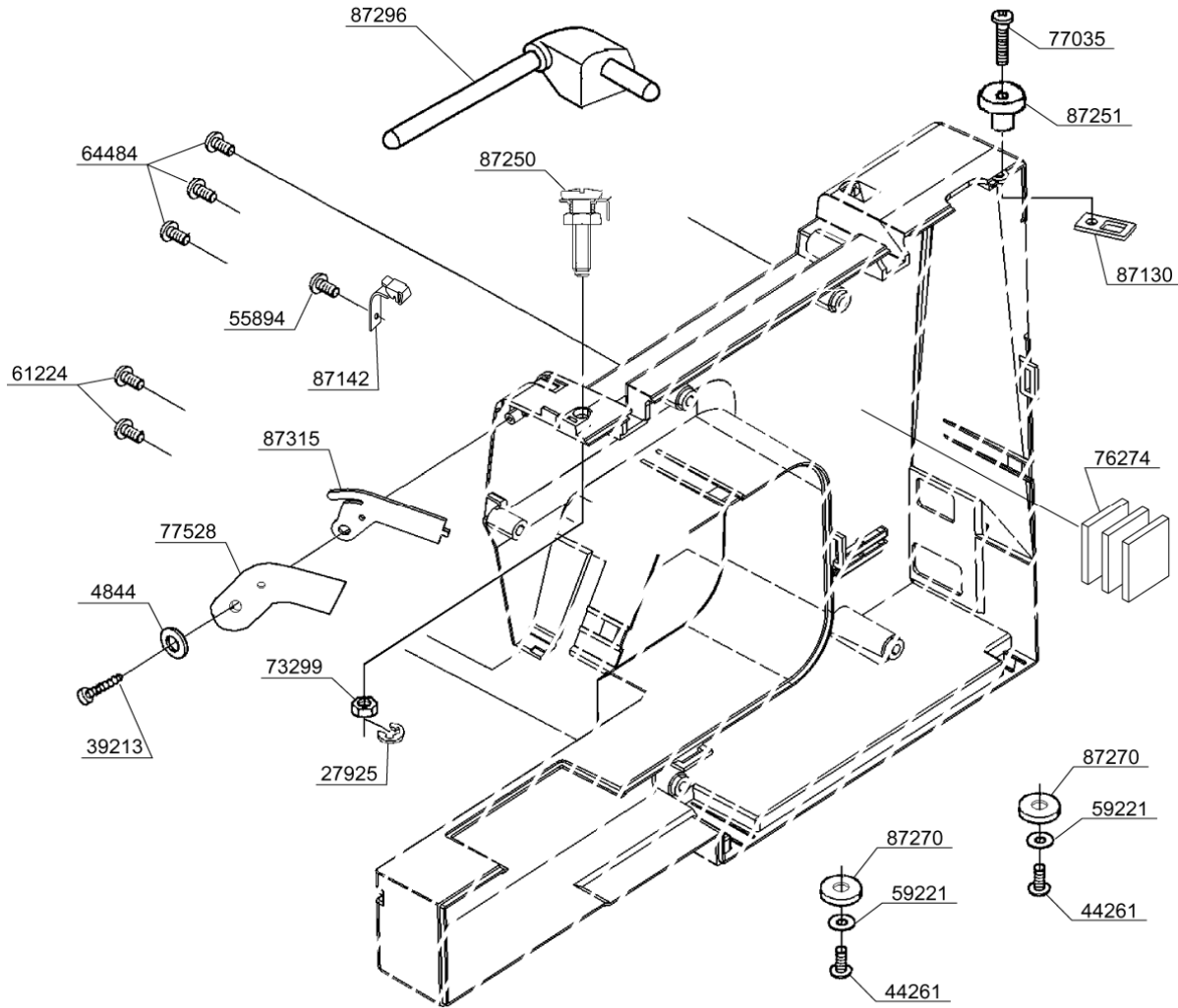


BUYER'S MODEL NO.	7464 , 7466	SECTION	PAGE	REVISION	REMARKS	PART NO.	DESCRIPTION
BUYER'S MODEL NAME	COSMO G-2,CB-2,3		11	AUGUST, 2006		2744	WASHER
FACTORY MODEL	464x0 , 464x1 , 464x2 466x0 , 466x1 , 466x2					25670	WASHER
ORIGINAL ISSUE	JULY , 2005	SERIAL NO.				31249	WASHER
						39213	M3 SCREW
						44261	M4 SCREW



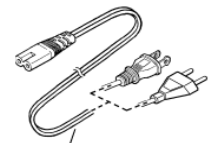
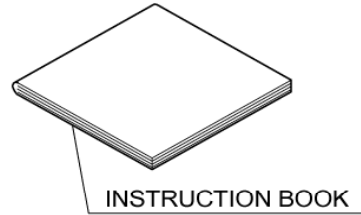
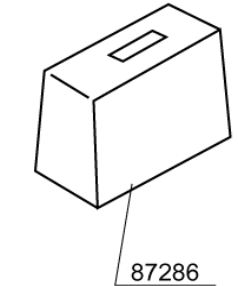
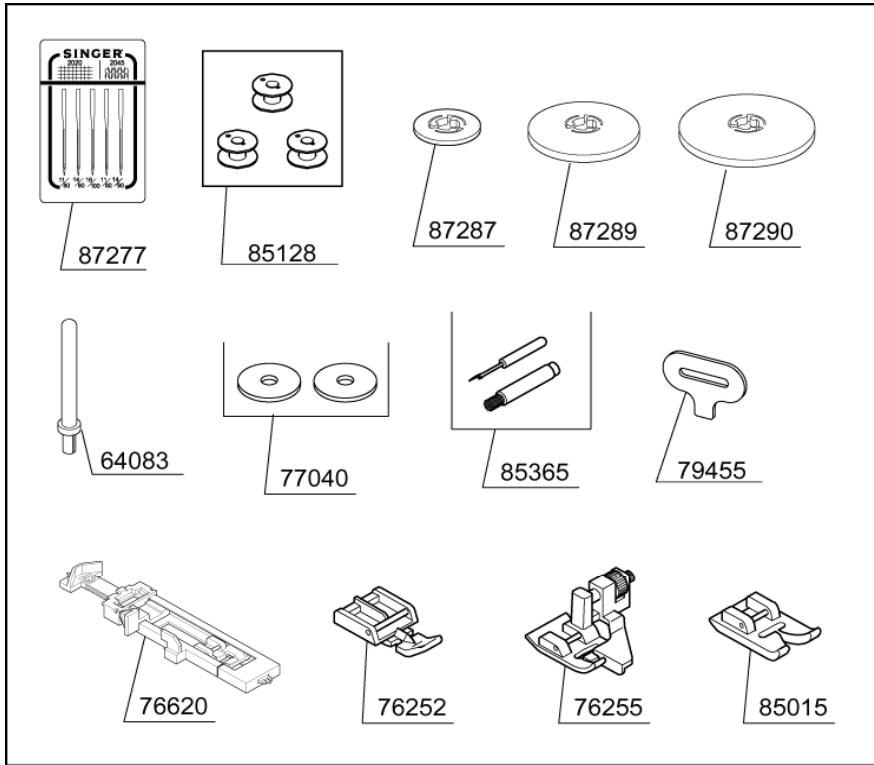
PART NO.	DESCRIPTION
2744	WASHER
25670	WASHER
31249	WASHER
39213	M3 SCREW
44261	M4 SCREW
55894	M3 SCREW
58024	TAPPING SCREW
59221	WASHER
61222	M4 PHILLIPS SCREW
61224	M4 PHILLIPS SCREW
64617	TAPPING SCREW
65736	M4 PHILLIPS SCREW
67533	RUBBER CUSHION
73299	M4 TORQUE NUT
76511	SEAL
77042	M4 PHILLIPS SCREW
77044	M3 PHILLIPS SCREW
77395	BLADE FIXTURE
77396	BLADE
80112	FACE COVER BRACKET
86038	STUD SCREW
86902	INDICATOR WINDOW
87218	NUT
87239	PATTERN DRAWER
87270	RUBBER FOOT
87271	RUBBER FOOT
87272	BRUSH
87292	KNOB
87293	SLIDE LEVER
87323	DRAWER BRACKET (RIGHT)
87324	DRAWER BRACKET (LEFT)
87402	LED PANEL
87451	FACE COVER
87453	FACE COVER (FOR MODEL 7464 GREECE, FRANCE ONLY)
87459	PATTERN SEAL (FOR MODEL 7464 ONLY)
87461	BUTTON
87462	CONTROL PANEL
87463	PATTERN SWITCH
87464	PATTERN SEAL (FOR MODEL 7466 ONLY)
87468	BUTTON
87469	BUTTON
87492	CONTROL PANEL (FOR MODEL 7464 GREECE, FRANCE ONLY)
87511	SWITCH HARNESS
87533	SWITCH CIRCUIT BOARD (FOR MODEL 7464 ONLY)
87547	SWITCH CIRCUIT BOARD (FOR MODEL 7466 ONLY)
88103	COVER

BUYER'S MODEL NO.	7464 , 7466	SECTION	PAGE	REVISION	REMARKS	PART NO.	DESCRIPTION
BUYER'S MODEL NAME	COSMO G-2,CB-2,3		12			4844	WASHER
FACTORY MODEL	464x0 , 464x1 , 464x2					27925	E2.5 CLIP-ON-WASHER
	466x0 , 466x1 , 466x2					39213	M3 SCREW
ORIGINAL ISSUE	JULY , 2005	SERIAL NO.				44261	M4 SCREW
						55894	TAPPING SCREW

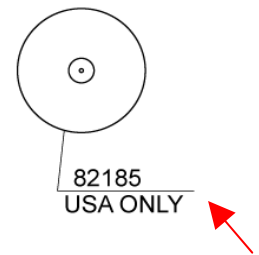


4844	WASHER
27925	E2.5 CLIP-ON-WASHER
39213	M3 SCREW
44261	M4 SCREW
55894	TAPPING SCREW
59221	WASHER
61224	M4 PHILLIPS SCREW
64484	TAPPING SCREW
73299	M4 TORQUE NUT
76274	SPACER
77035	M4 PHILLIPS SCREW
77528	SPRING PLATE
87130	RETAINER
87142	RETAINER
87250	M4 SPECIAL SCREW UNIT
87251	BOBBIN WINDER CAM
87270	RUBBER FOOT
87296	SPOOL PIN UNIT
87315	TENSION PLATE

BUYER'S MODEL NO.	7464 , 7466	SECTION	PAGE	REVISION	REMARKS	PART NO.	DESCRIPTION
BUYER'S MODEL NAME	COSMO G-2,CB-2,3		13	AUGUST, 2006		51053	ACCESSORY SET
FACTORY MODEL	464x0 , 464x1 , 464x2 466x0 , 466x1 , 466x2			MAY, 2008		64083	SPOOL PIN
ORIGINAL ISSUE	JULY , 2005	SERIAL NO.				76252	ZIPPER FOOT



- 85338 (UK, MALAYSIA ONLY)
- 85339 (230V)
- 85343 (AUSTRALIA ONLY)
- 85349 (KOREA ONLY)
- 85354 (CHINA ONLY)
- 87534 (120V)



77240	SPOOL PIN DISC
77235	INSTRUCTION BOOK (Eng/Free/Spa) FOR MODEL7466 ONLY
77240	INSTRUCTION BOOK (Ita/Dut/Ger)
77260	INSTRUCTION BOOK (Korean)
77267	INSTRUCTION BOOK (Eng/Fre/Spa) FOR MODEL7464 ONLY
77269	INSTRUCTION BOOK (Fre/Gree/Eng)
77272	INSTRUCTION BOOK (Dan/Swe/Nor)
77274	INSTRUCTION BOOK (Fin/Estonian/Portuguese)
79455	LARGE SCREW DRIVER
82020	INSTRUCTION BOOK (Russia)
85015	SATIN FOOT
85128	BOBBIN
85338	POWER CORD (UK, MALAYSIA ONLY)
85339	POWER CORD (230V)
85343	POWER CORD (AUSTRALIA ONLY)
85349	POWER CORD (KOREA ONLY)
85354	POWER CORD (CHINA ONLY)
85365	BUTTONHOLE OPENER / BRUSH
87277	NEEDLE SET
87286	VINYL COVER
87287	SPOOL PIN CAP (MINI)
87289	SPOOL PIN CAP (SMALL)
87290	SPOOL PIN CAP (LARGE)
87532	FOOT CONTROL (PIN-JACK TYPE)
87534	POWER CORD (120V)
82185	QUICK START GUIDE DVD (USA ONLY)