

## 1520-1548

german engineering

1520, 1522, 1524, 1525, 1526, 1527, 1528  
1529, 1530, 1536, 1538, 1540, 1546, 1548

**Ersatzteile-Liste**

**List of spare parts**

**Liste des pièces détachées**

**Catalogo pezzi staccati**

**Lista de piezas de repuesto**

**Nicht nummerierte Teile im Katalog werden nicht geliefert.**

**The parts mentioned without number in the parts list are not available.**

**Les pièces qui ne sont pas numérotées dans la liste de pièces détachées ne peuvent être livrées.**

**Pezzi non catalogati non sono disponibili.**

**Las piezas de repuesto sin número en esta lista no se entregarán.**

Bei Bestellung von Ersatzteilen muss die Modell-Nr. der Maschine, die Seitenzahl des Kataloges und die Teilenummer angegeben werden.

Die Verschleißteile-Nummern sind in der Teileliste **unterstrichen**.

When ordering spare parts, please state the model number, the page number in the catalogue of spare parts and the number of the parts called for.

The wear and tear part numbers are **underlined** in the parts list.

Prière d'indiquer dans vos commandes de pièces de rechange, le numéro de la machine, le numéro de la page dans la liste des pièces détachées, ainsi que les numéros des pièces commandées.

Les numéros de pièces d'usure sont **imprimés soulignés** dans la liste des pièces.

La richiesta dei pezzi di ricambio deve contenere il modello della macchina, la pagina del catalogo e il codice del pezzo.

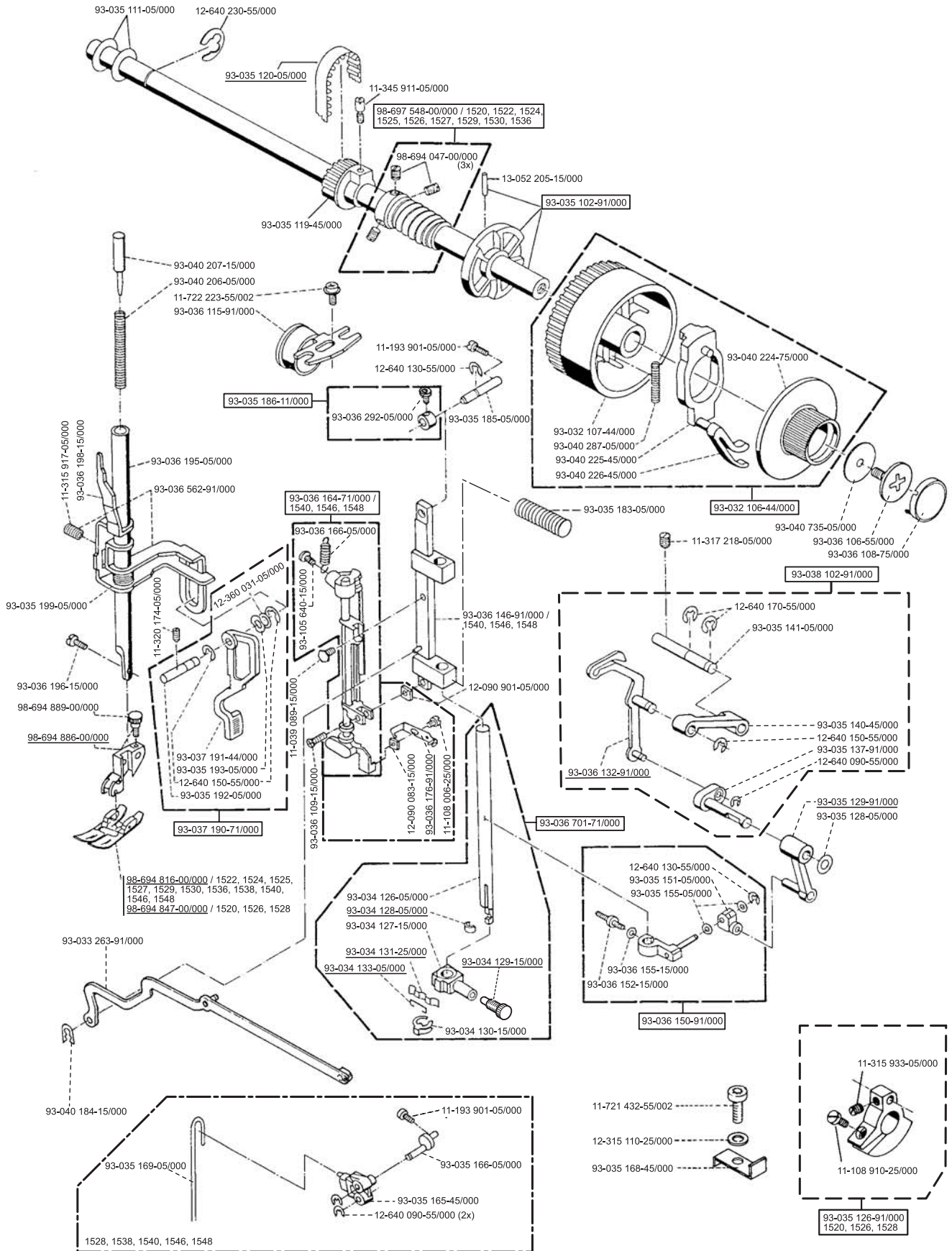
I codini dei pezzi d'usura sono quelli **sottolineati** nel catalogo.

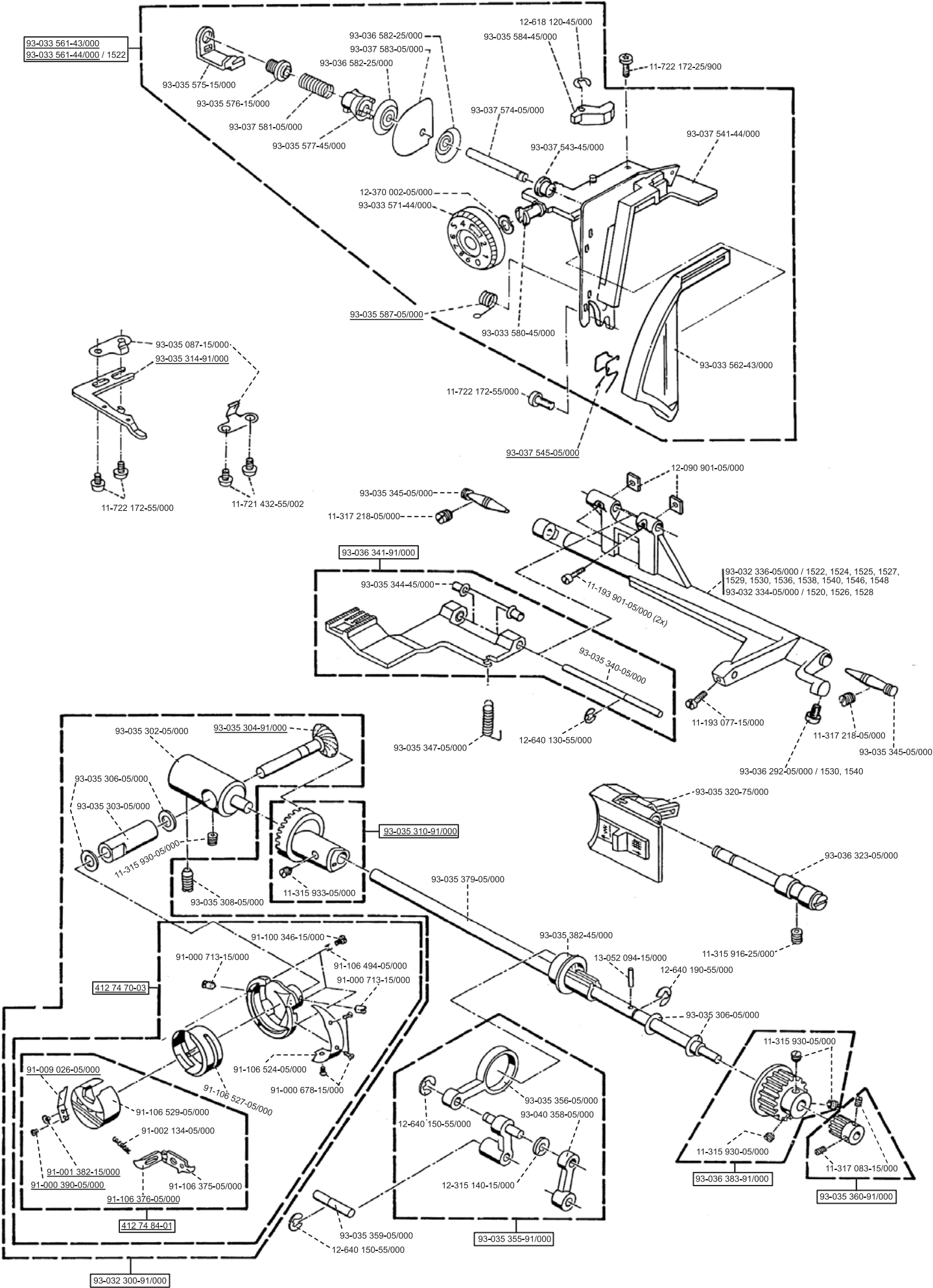
Al pedir piezas, sírvanse de indicar el número del modelo de la máquina, la página de la lista de piezas de repuestos y el número de la pieza deseada.

Los números de las piezas de desgaste están **subrayadas** en la lista.

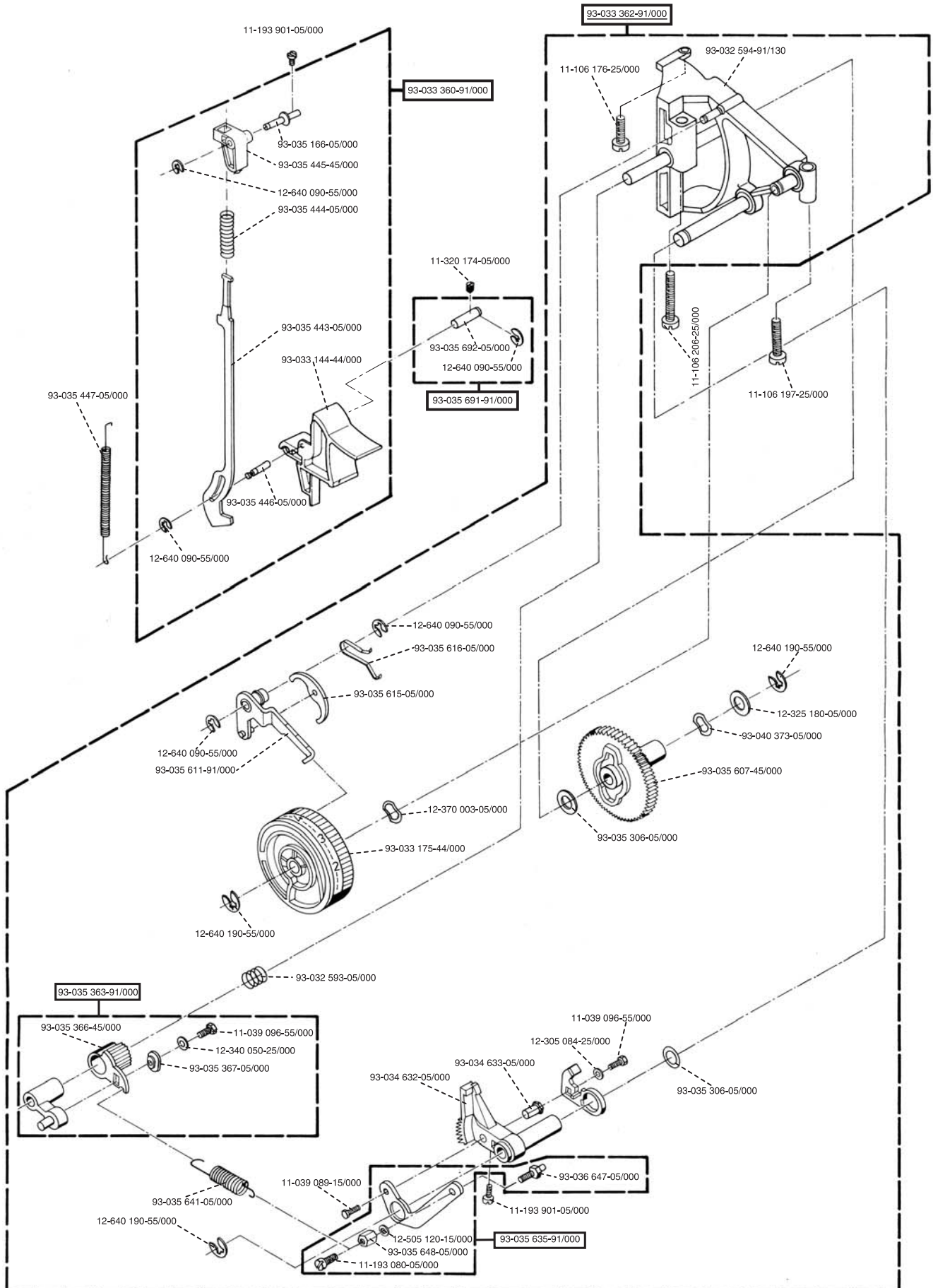


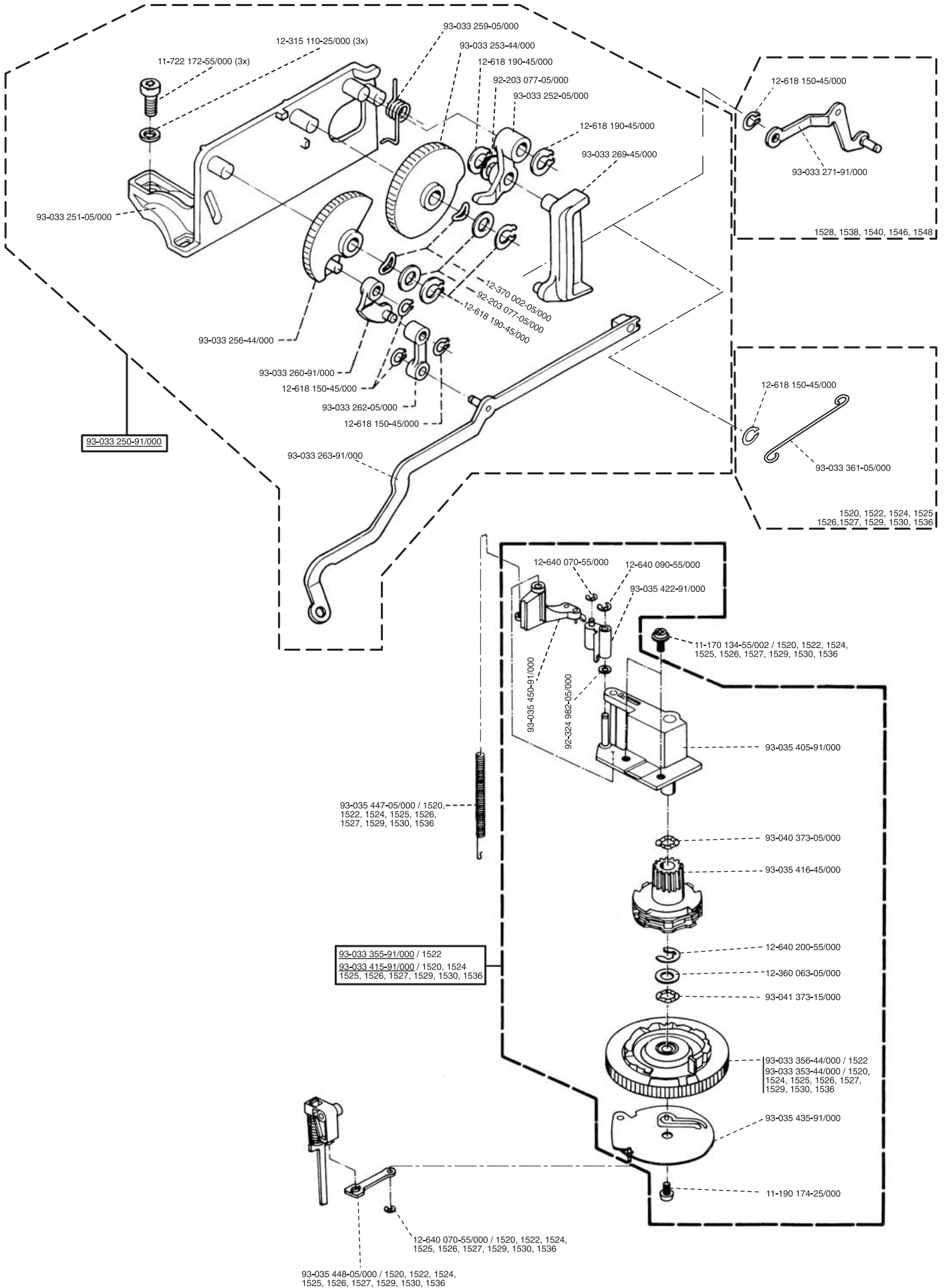
# PFAFF select 1520 - 1548



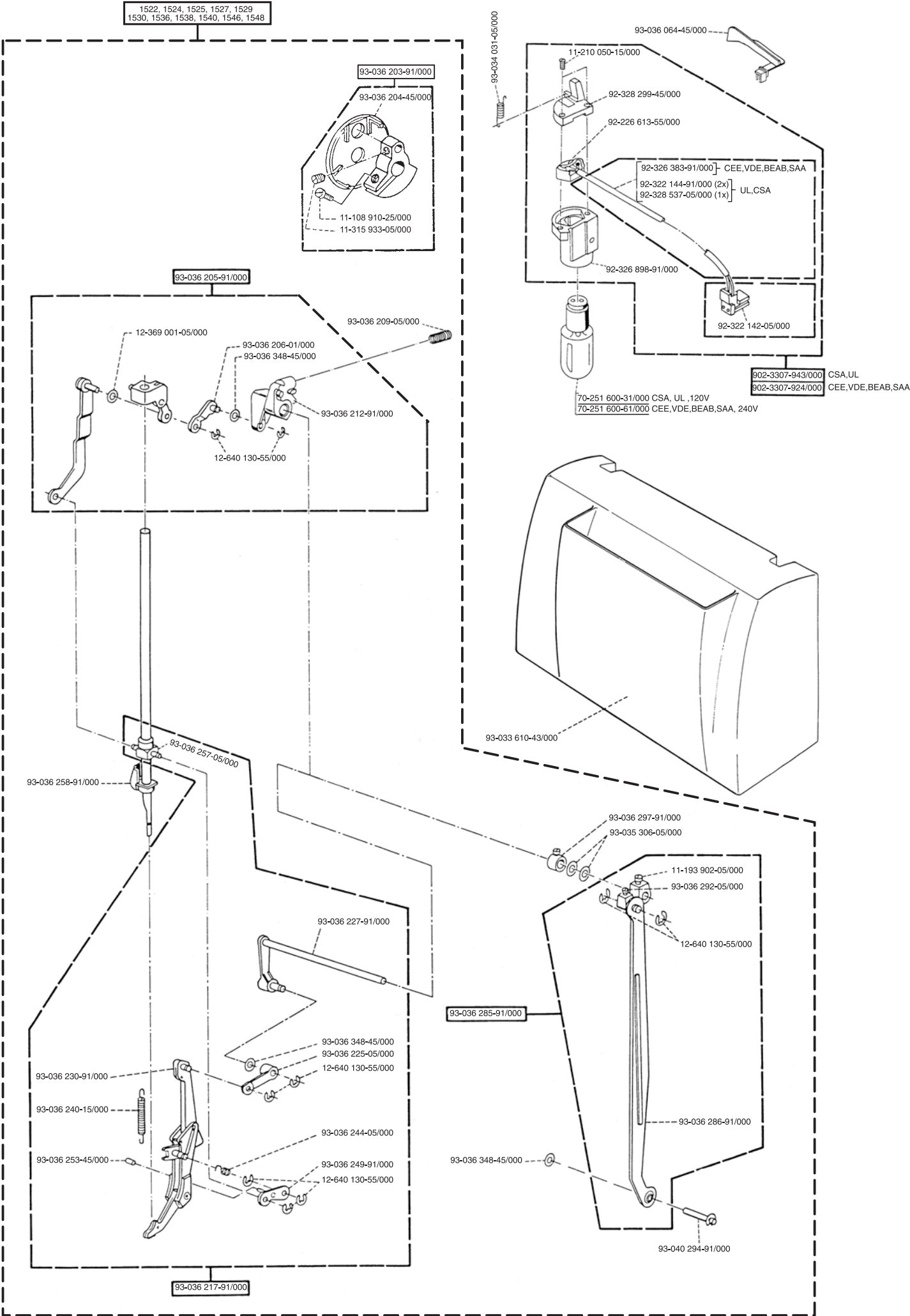




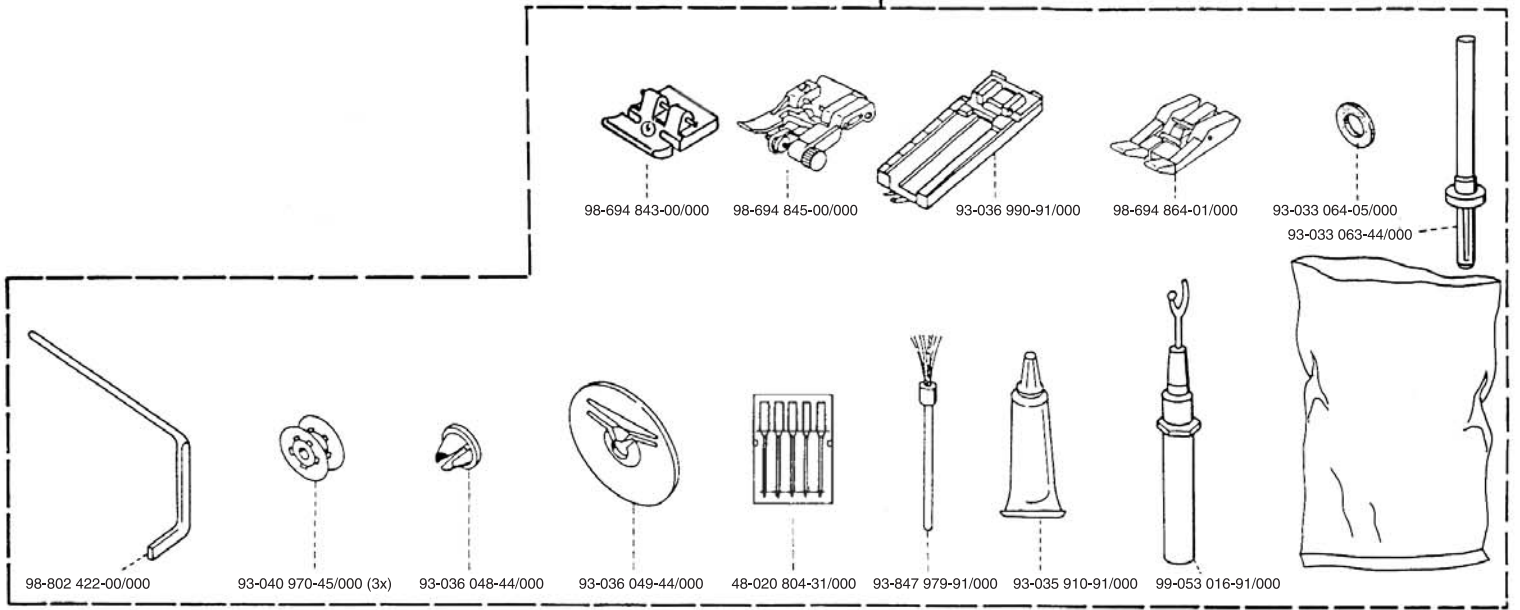




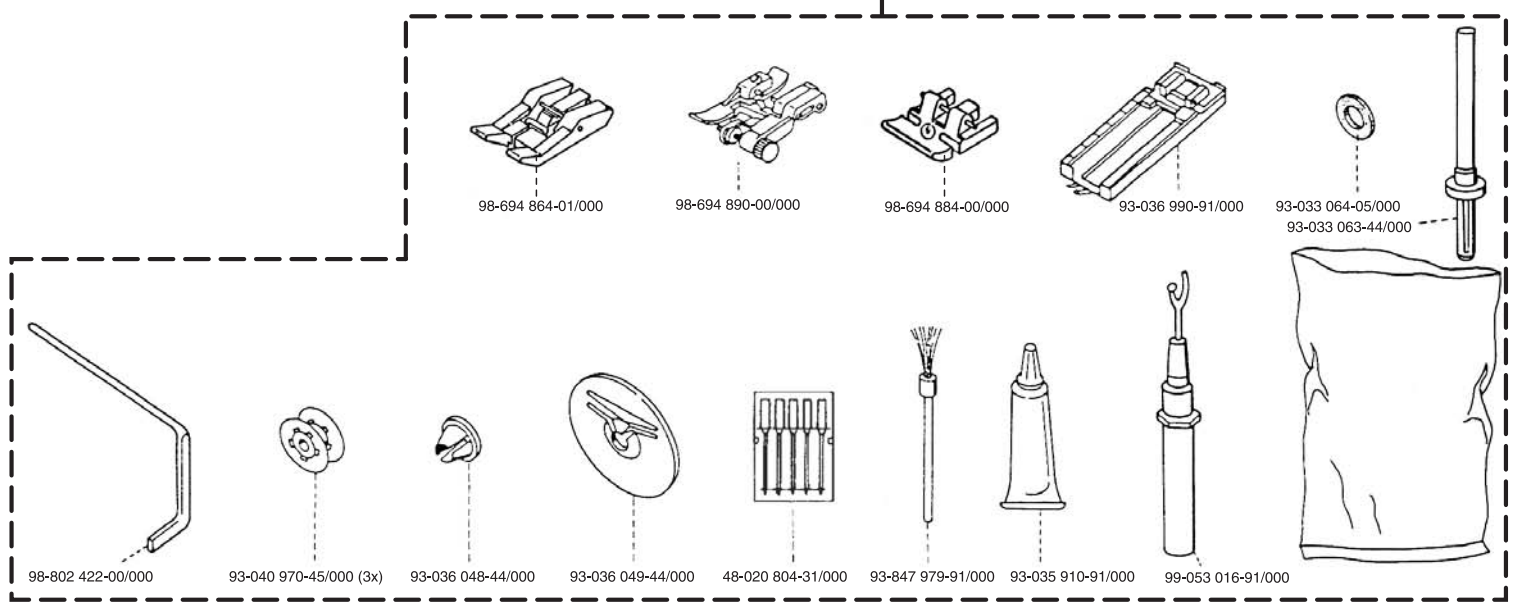




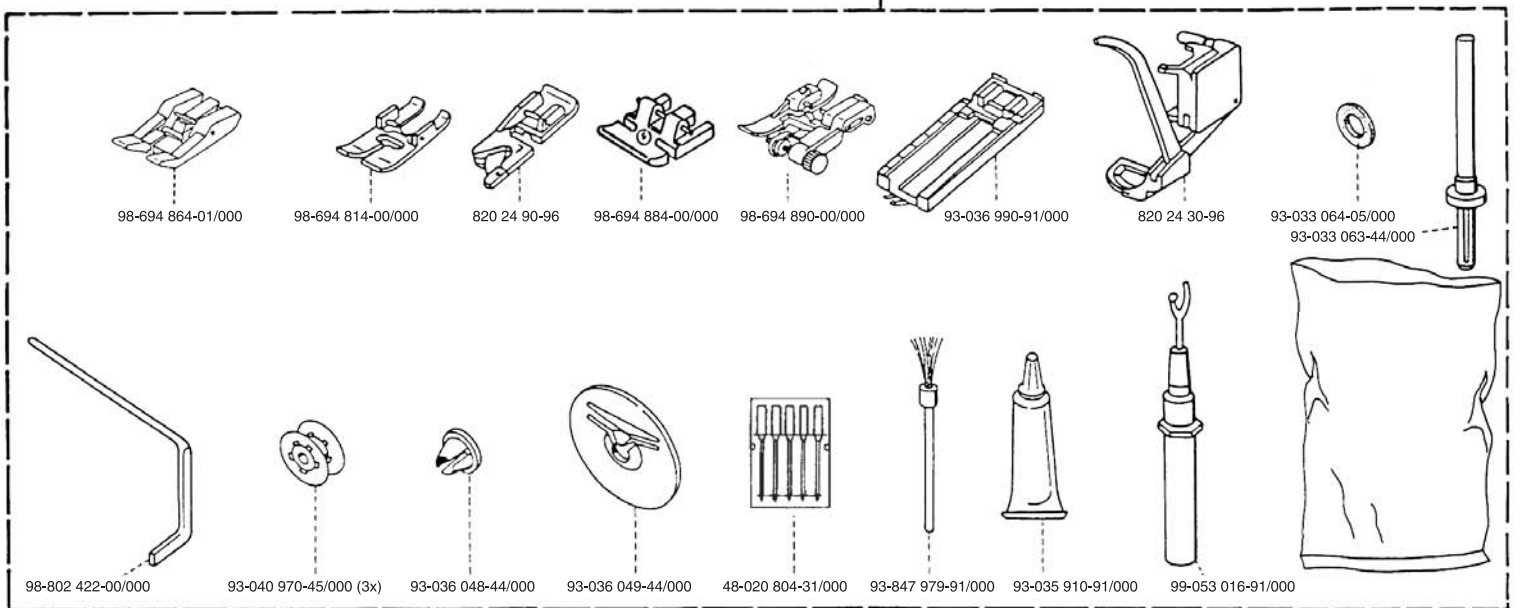
93-033 901-44/000 / 1520, 1526, 1528

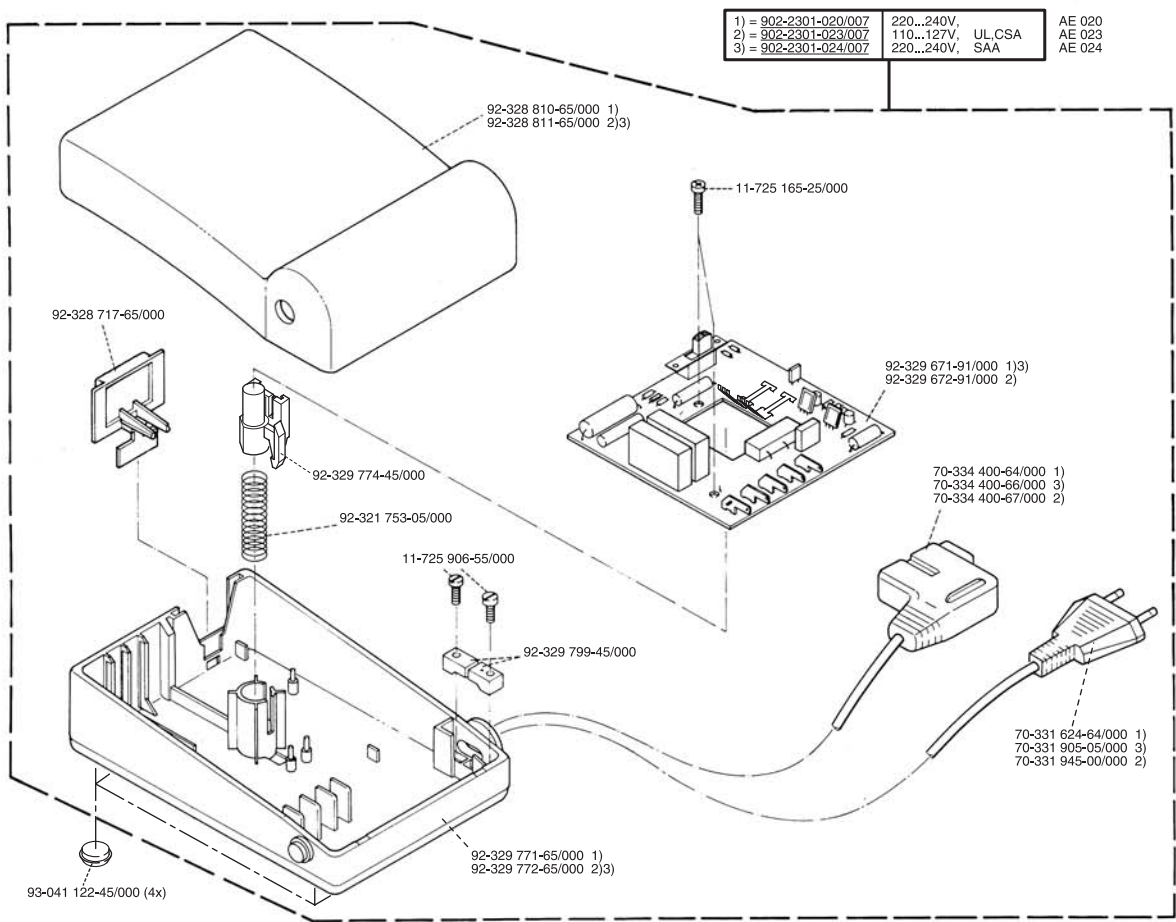
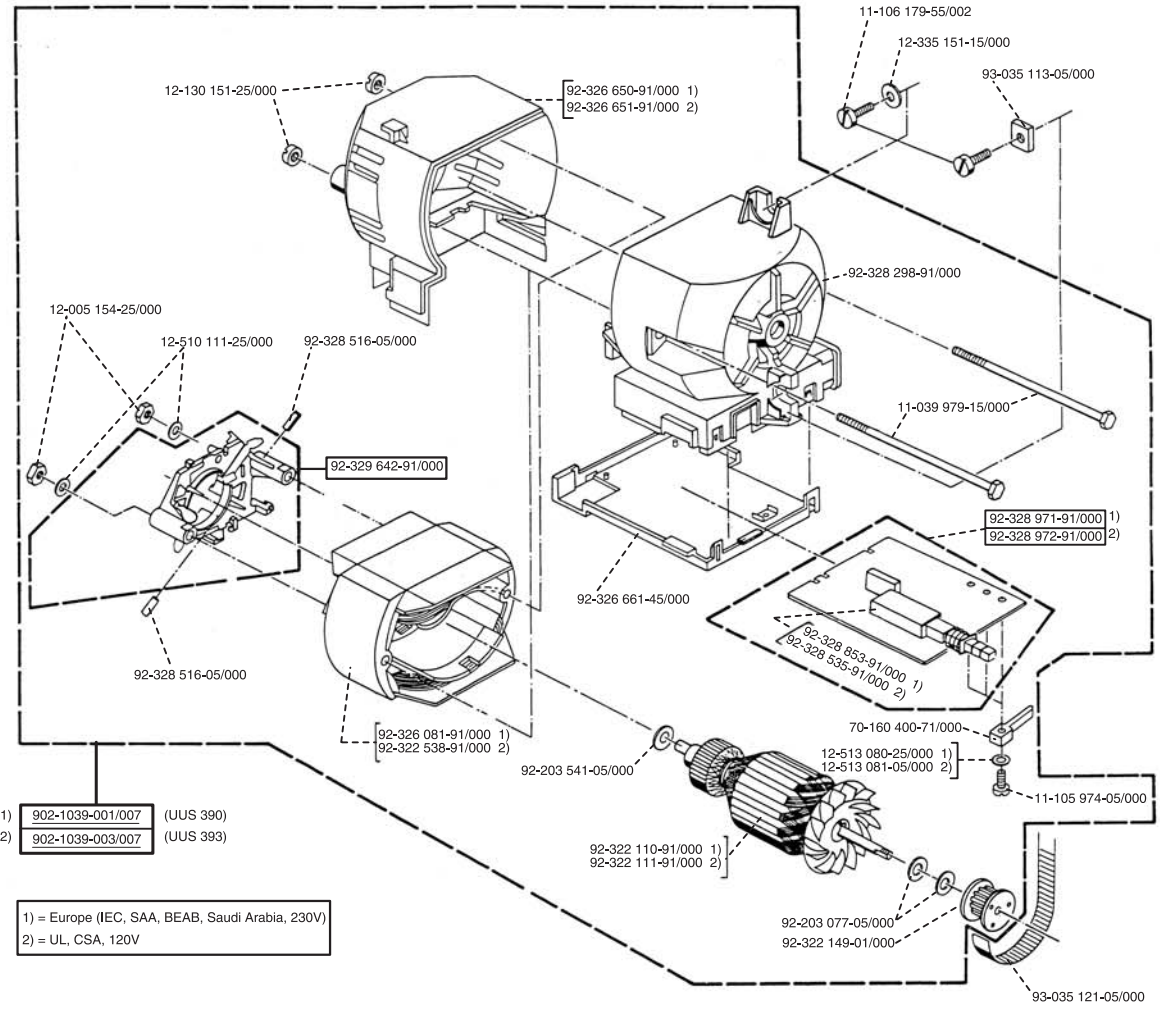


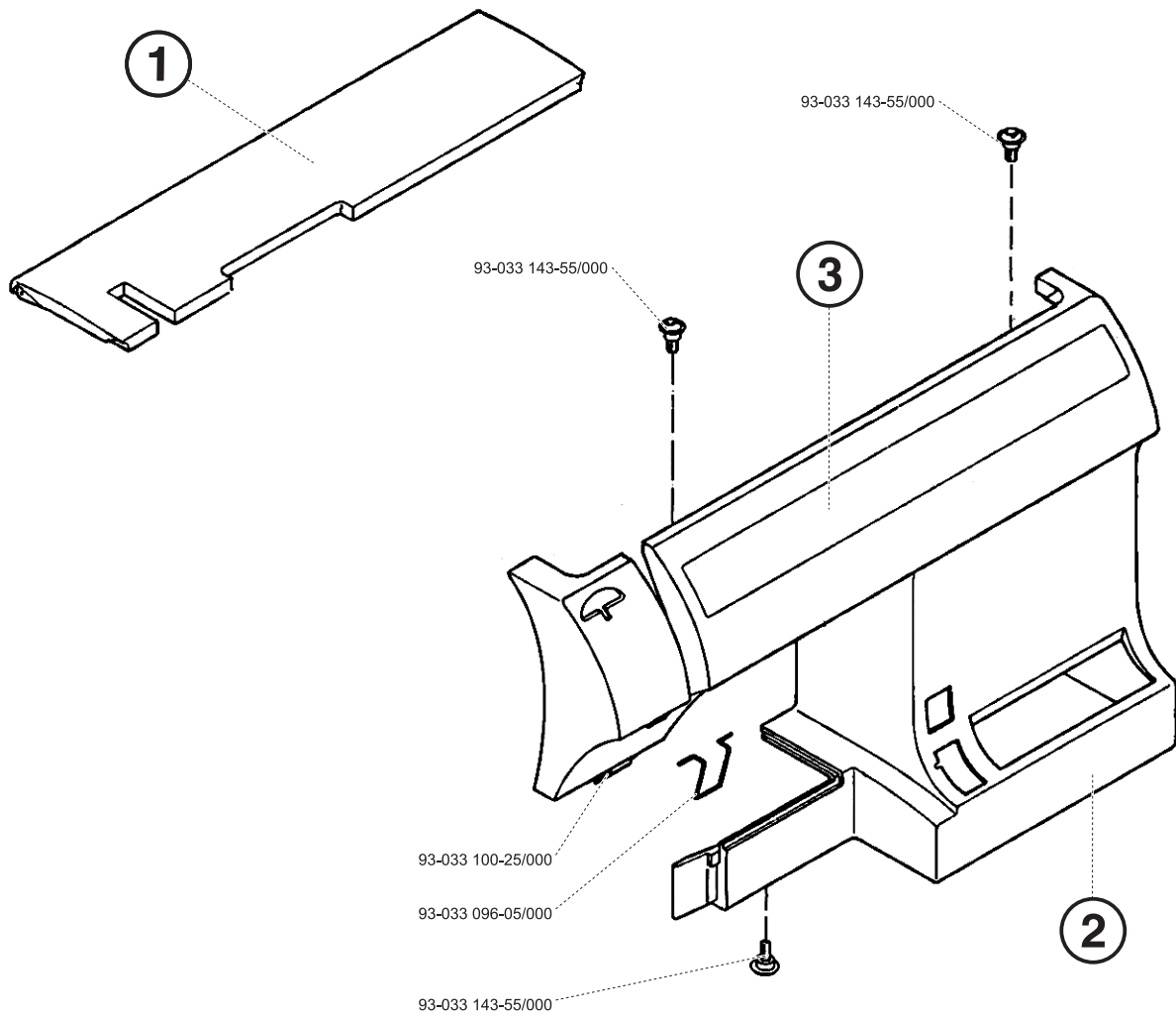
93-033 903-44/000 / 1522, 1524, 1525, 1527, 1529, 1530, 1536, 1538



93-033 902-44/000 / 1540, 1546, 1548



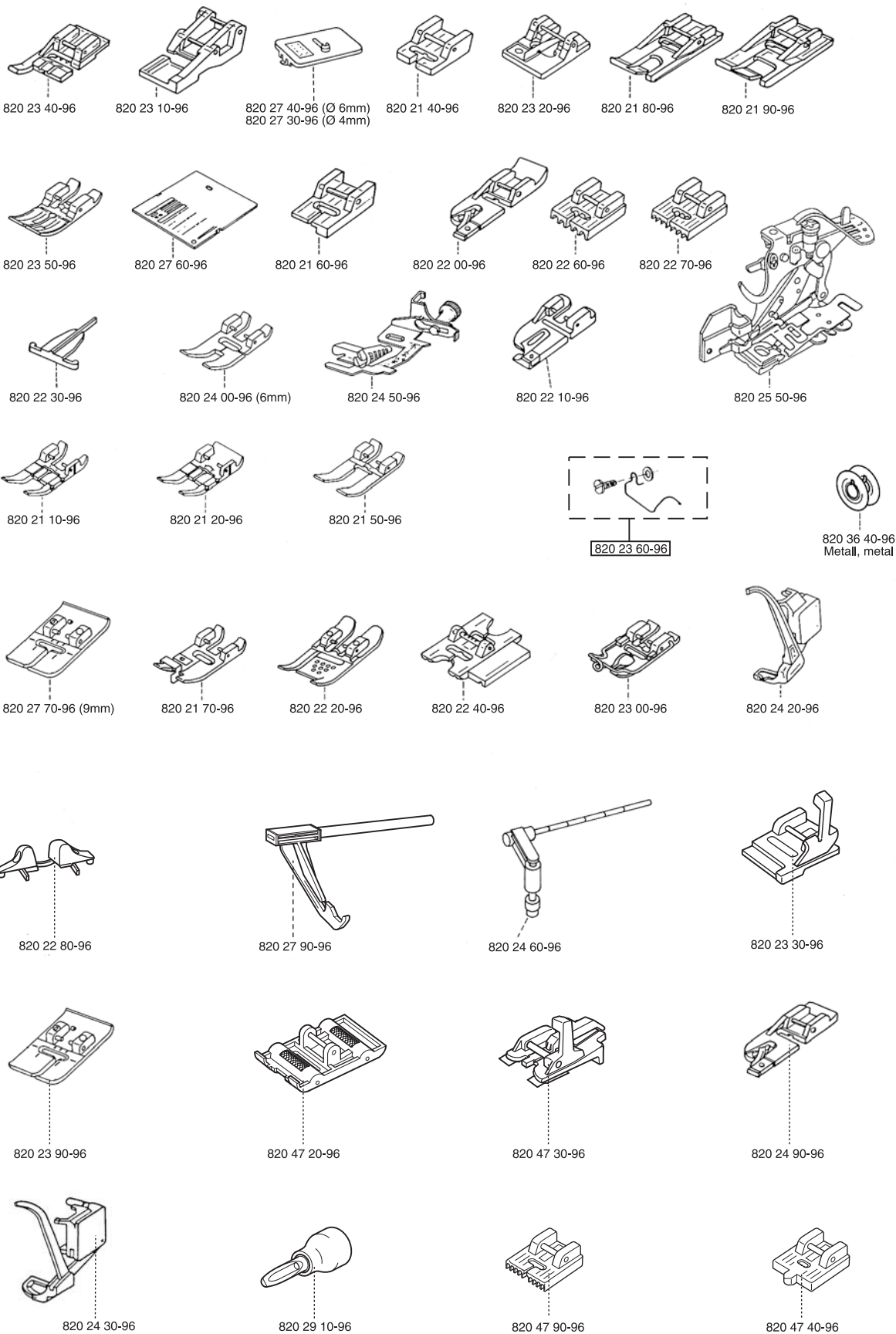




| MODELL<br>TYPE | ARMDECKEL KPL.<br>ARM COVER CPL.<br><b>1</b> | SCHALE VORNE<br>FRONT COVER<br><b>2</b> | SICHTBLENDE BEDRUCKT<br>FRONT PANEL PRINTED<br><b>3</b> |
|----------------|--|---|---|
| 1520           | 93-033 382-91/000                            | 93-033 370-43/000                       | 93-033 390-43/000                                       |
| 1522           | 93-033 379-71/000                            | 93-033 370-44/000                       | 93-033 400-37/000                                       |
| 1524           | 93-033 375-43/000*                           | 93-033 370-43/000                       | 93-033 402-43/000                                       |
| 1525           | 93-033 442-91/000                            | 93-033 370-43/000                       | 412 97 13-06  |
| 1526           | 93-033 422-91/000                            | 93-033 370-43/000                       | 93-033 430-42/000                                       |
| 1527           | 412 90 63-01                                 | 93-033 370-43/000                       | 412 97 13-05  |
| 1528           | 412 97 05-01                                 | 93-033 373-43/000                       | 412 97 13-01  |
| 1529           | 412 92 19-01                                 | 93-033 370-43/000                       | 412 97 13-04  |
| 1530           | 93-033 385-91/000                            | 93-033 370-43/000                       | 93-033 392-43/000                                       |
| 1536           | 93-033 425-91/000                            | 93-033 370-43/000                       | 93-033 432-42/000                                       |
| 1538           | 412 97 05-02                                 | 93-033 373-43/000                       | 412 97 13-02  |
| 1540           | 93-033 388-91/000                            | 93-033 373-43/000                       | 93-033 394-43/000                                       |
| 1546           | 93-033 428-91/000                            | 93-033 373-43/000                       | 93-033 434-42/000                                       |
| 1548           | 412 97 05-03                                 | 93-033 373-43/000                       | 412 97 13-03  |

\* nur Einstellanleitung / only adjusting instructions

Sonderzubehör, Special accessories, Accessoires spéciaux, Accessori fuori corredo, accesorios especiales



## Nummernverzeichnis • Numerical Index • Index • Elenco dei Numeri • Índice numérico

|                   | Bezeichnung                         | Description                       | Seite / page |
|-------------------|-------------------------------------|-----------------------------------|--------------|
| 11-039 089-15/000 | SHR ISO 4017-M3x5                   | screw ISO 4017-M3x5               | 2,4,5        |
| 11-039 096-55/000 | SHR ISO 4017-M3x8                   | screw ISO 4017-M3x8               | 4,5          |
| 11-039 979-15/000 | SHR ISO 4017-M4x65                  | screw ISO 4017-M4x65              | 9            |
| 11-105 974-05/000 | SHR ISO 1207-M3x12                  | screw ISO 1207-M3x12              | 9            |
| 11-106 176-25/000 | Zyl.Schraube ISO 1207 M4x10         | helical screw ISO 1207 M4x10      | 5            |
| 11-106 179-55/002 | SHR ISO 1207-M4x12                  | screw ISO 1207-M4x12              | 9            |
| 11-106 197-25/000 | SHR ISO 1207-M4x25                  | screw ISO 1207-M4x25              | 5            |
| 11-106 206-25/000 | Zyl. Schraube ISO 1207 M4x35        | helical screw ISO 1207 M4x35      | 5            |
| 11-106 947-55/002 | SHR DIN 84 M4x4                     | screw DIN 84 M4x4                 | 3            |
| 11-108 006-25/000 | SHR DIN 84-A M2x3                   | screw DIN 84-A M2x3               | 2            |
| 11-108 910-25/000 | SHR DIN 84 M5x14                    | screw DIN 84 M5x14                | 2,7          |
| 11-170 134-55/002 | SHR ISO 1580-M3,5x8                 | screw ISO 1580-M3,5x8             | 6            |
| 11-190 098-25/000 | SHR ISO 7045 M3                     | screw ISO 7045 M3                 | 1            |
| 11-190 174-25/000 | SHR DIN 7985 M4x8                   | screw DIN 7985 M4x8               | 6            |
| 11-190 908-55/000 | SHR DIN 7985 M4x35                  | screw DIN 7985 M4x35              | 4            |
| 11-190 909-55/000 | SHR DIN 7985 M4x12                  | screw DIN 7985 M4x12              | 4            |
| 11-193 077-15/000 | SHR PH11193-B M3x5                  | screw PH11193-B M3x5              | 3            |
| 11-193 080-05/000 | SHR PH11193-B M3x6                  | screw PH11193-B M3x6              | 4,5          |
| 11-193 901-05/000 | SHR PH11193-B M3x7                  | screw PH11193-B M3x7              | 2,3,4,5      |
| 11-193 902-05/000 | SHR PH11193-A M4x5,5                | screw PH11193-A M4x5,5            | 7            |
| 11-210 050-15/000 | Senkschraube DIN 963 M2,5x10        | countersunk screw DIN 963 M2,5x10 | 7            |
| 11-236 168-55/000 | SHR DIN 965 M4x8                    | screw DIN 965 M4x8                | 1            |
| 11-315 916-25/000 | Gewindestift PH 11315-B M6x8        | set screw PH 11315-B M6x8         | 3            |
| 11-315 917-05/000 | Gewindestift PH 11315-B M6x0,75x6   | set screw PH 11315-B M6x0,75x6    | 2            |
| 11-315 930-05/000 | Gewindestift PH 11315-B M6x0,75x3,5 | set screw PH 11315-B M6x0,75x3,5  | 3            |
| 11-315 933-05/000 | Gewindestift PH 11315-B M6x0,75x5   | set screw PH 11315-B M6x0,75x5    | 2,3,7        |
| 11-317 083-15/000 | Gewindestift ISO 4766 M3x3          | set screw ISO 4766 M3x3           | 3            |
| 11-317 218-05/000 | Gewindestift ISO 4766 M5x6          | set screw ISO 4766 M5x6           | 2,3          |
| 11-320 174-05/000 | Gewindestift ISO 7434 M4x8          | set screw ISO 7434 M4x8           | 2,4,5        |
| 11-345 911-05/000 | SHR DIN 927 M4x8                    | screw DIN 927 M4x8                | 2            |
| 11-721 432-55/002 | SHR D7500-BE M4x6                   | screw D7500-BE M4x6               | 2,3          |
| 11-722 172-55/000 | SHR PN11722-M4x8                    | screw PN11722-M4x8                | 1,3,6        |
| 11-722 172-25/900 | SHR PN11722-M4x8 mit Scheibe        | screw PN11722-M4x8 with disk      | 3            |
| 11-722 223-55/002 | SHR PN11722-M5x10                   | screw PN11722-M5x10               | 2            |
| 11-725 165-25/000 | SHR F3 5x9 5 N11725                 | screw F3 5x9 5 N11725             | 9            |
| 11-725 906-55/000 | SHR N11725-B 2,9x16                 | screw N11725-B 2,9x16             | 9            |
| 11-728 427-55/000 | SHR PN11728-F 3x10                  | screw PN11728-F 3x10              | 4            |
| 11-728 459-55/000 | SHR PN11728-B 3x16                  | screw PN11728-B 3x16              | 9            |
| 11-728 532-55/000 | SHR PN11728-C 3,5x10                | screw PN11728-C 3,5x10            | 9            |
| 12-005 154-25/000 | Mutter ISO 4035 M4                  | nut ISO 4035 M4                   | 9            |
| 12-090 083-15/000 | Mutter DIN 562 M2                   | nut DIN 562 M2                    | 2            |
| 12-090 121-05/000 | Mutter DIN 562 M3                   | nut DIN 562 M3                    | 1            |
| 12-090 901-05/000 | Mutter DIN 562 M3                   | nut DIN 562 M3                    | 2,3          |
| 12-130 151-25/000 | Mutter DIN 546 M4                   | nut DIN 546 M4                    | 9            |
| 12-305 084-25/000 | SHB ISO 7089-3-200 HV               | washer ISO 7089-3-200 HV          | 4,5          |
| 12-315 110-25/000 | SHB DIN 433-4,3                     | washer DIN 433-4,3                | 2,6          |
| 12-315 140-15/000 | SHB DIN 433-5,3                     | washer DIN 433-5,3                | 3            |
| 12-325 180-05/000 | SHB DIN 1440-7                      | washer 7 DIN 1440                 | 5            |
| 12-335 151-15/000 | SHB DIN 9021-4,3                    | washer DIN 9021-4,3               | 9            |
| 12-340 050-25/000 | SHB DIN 6902-A-3,2                  | washer DIN 6902-A-3,2             | 4,5          |
| 12-360 031-05/000 | SHB DIN 988-5x10x0,2                | washer DIN 988-5x10x0,2           | 2            |
| 12-360 063-05/000 | SHB DIN 988-8x14x0,3                | washer DIN 988-8x14x0,3           | 6            |
| 12-369 001-05/000 | SHB 4,6x6,7 PH12369                 | washer 4,6x6,7 PH12369            | 7            |
| 12-370 002-05/000 | SHB N12370-6,2x9,8                  | washer N12370-6,2x9,8             | 3,6          |
| 12-370 003-05/000 | SHB N12370-7,2x12                   | washer N12370-7,2x12              | 4,5          |
| 12-505 120-15/000 | Federscheibe D137-A3                | spring disk D137-A3               | 4,5          |
| 12-510 111-25/000 | SHB DIN 6797-J 4,3                  | washer DIN 6797-J 4,3             | 9            |
| 12-513 080-25/000 | SHB N12513-3                        | washer N12513-3                   | 9            |
| 12-513 081-05/000 | SHB N12513-3                        | washer N12513-3                   | 9            |
| 12-618 120-45/000 | Ring PN12618-3                      | ring PN12618-3                    | 3            |
| 12-618 150-45/000 | Ring PN12618-4                      | ring PN12618-4                    | 6            |
| 12-618 190-45/000 | Ring PN12618-6                      | ring PN12618-6                    | 6            |
| 12-618 200-45/000 | Ring PN12618-7                      | ring PN12618-7                    | 4            |
| 12-640 070-55/000 | SHB DIN 6799-1,9                    | washer DIN 6799-1,9               | 6            |
| 12-640 090-55/000 | SHB DIN 6799-2,3                    | washer DIN 6799-2,3               | 1,2,4,5,6    |
| 12-640 130-55/000 | SHB DIN 6799-3,2                    | washer DIN 6799-3,2               | 2,3,4,7      |
| 12-640 150-55/000 | SHB DIN 6799-4                      | washer DIN 6799-4                 | 2,3          |
| 12-640 170-55/000 | SHB DIN 6799-5                      | washer DIN 6799-5                 | 1,2          |
| 12-640 190-55/000 | SHB DIN 6799-6                      | washer DIN 6799-6                 | 3,4,5        |
| 12-640 200-55/000 | SHB DIN 6799-7                      | washer DIN 6799-7                 | 6            |

## Nummernverzeichnis • Numerical Index • Index • Elenco dei Numeri • Índice numérico

|                          | Bezeichnung                        | Description                                      | Seite / page |
|--------------------------|------------------------------------|--|--------------|
| 12-640 230-55/000        | SHB DIN 6799-10                    | washer DIN 6799-10                               | 2            |
| 13-052 094-15/000        | Spannstift ISO 8750-2x10           | tightening pin ISO 8750-2x10                     | 3,4          |
| 13-052 205-15/000        | Spannstift ISO 8750-3x20           | tightening pin ISO 8750-3x20                     | 2            |
| 13-052 986-15/000        | Spannstift ISO 8750-1x5            | tightening pin ISO 8750-1x5                      | 1            |
| 13-250 103-25/000        | Kerbnagel ISO 8746-2x7             | grooved pin ISO 8746-2x7                         | 4            |
| <u>412 74 70-03</u>      | Umlaufgreifer                      | rotary hook                                      | 3            |
| <u>412 74 84-01</u>      | Spulenkapsel kpl.                  | bobbin case cpl.                                 | 3            |
| 412 90 63-01             | Armdeckel kpl.                     | arm cover cpl.                                   | 10           |
| 412 92 19-01             | Armdeckel kpl.                     | arm cover cpl.                                   | 10           |
| 412 97 05-01             | Armdeckel kpl.                     | arm cover cpl.                                   | 10           |
| 412 97 05-02             | Armdeckel kpl.                     | arm cover cpl.                                   | 10           |
| 412 97 05-03             | Armdeckel kpl.                     | arm cover cpl.                                   | 10           |
| <u>412 97 09-01</u>      | Automatik kpl.                     | automatic cpl.                                   | 4            |
| <u>412 97 09-02</u>      | Automatik kpl.                     | automatic cpl.                                   | 4            |
| <u>412 97 09-03</u>      | Automatik kpl.                     | automatic cpl.                                   | 4            |
| 412 97 13-01             | Sichtblende bedr.                  | view panel printed                               | 10           |
| 412 97 13-02             | Sichtblende bedr.                  | view panel printed                               | 10           |
| 412 97 13-03             | Sichtblende bedr.                  | view panel printed                               | 10           |
| 412 97 13-04             | Sichtblende bedr.                  | view panel printed                               | 10           |
| 412 97 13-05             | Sichtblende bedr.                  | view panel printed                               | 10           |
| 412 97 13-06             | Sichtblende bedr.                  | view panel printed                               | 10           |
| 48-020 804-31/000        | 5-er Nadelbox 130/705H             | needle box 5-er 130/705H                         | 8            |
| 70-160 400-71/000        | Kerb-Stift G N71604                | notched pin G N71604                             | 9            |
| <u>70-251 600-31/000</u> | Lampe N72516-A 120-15              | lamp N72516-A 120-15                             | 7            |
| <u>70-251 600-61/000</u> | Lampe N72516-A 240-15              | lamp N72516-A 240-15                             | 7            |
| 70-331 624-64/000        | Netzleitung PH 73310 (AE 020)      | supply main PH 73310 (AE 020)                    | 9            |
| 70-331 905-05/000        | Netzleitung PH 73310 (AE 024)      | supply main PH 73310 (AE 024)                    | 9            |
| 70-331 945-00/000        | Netzleitung PH 73310 (AE 023)      | supply main PH 73310 (AE 023)                    | 9            |
| 70-334 400-64/000        | Leitung N73340-CEE-GR (AE 020)     | cable N73340-CEE-GR (AE 020)                     | 9            |
| 70-334 400-66/000        | Leitung PH 73344-SAA-GR (AE 024)   | cable PH 73344-SAA-GR (AE 024)                   | 9            |
| 70-334 400-67/000        | Leitung PH 73344-UL/CSA (AE 023)   | cable PH 73344-UL/CSA (AE 023)                   | 9            |
| 820 21 10-96             | Patchworfuß kpl. mit IDT           | patchwork foot cpl. with IDT                     | 11           |
| 820 21 20-96             | Quilt. & Patchworfuß kpl. ohne IDT | quilt & patchwork foot cpl. without IDT          | 11           |
| 820 21 40-96             | Applikationsfuß kpl.               | applique foot cpl.                               | 11           |
| 820 21 50-96             | Applikationsfuß kpl. 9 mm          | applique foot cpl. 9 mm                          | 11           |
| 820 21 60-96             | Strickkantenfuß kpl.               | knit-edge foot cpl.                              | 11           |
| 820 21 70-96             | Schmalkantenfuß kpl.               | narrow edge foot cpl.                            | 11           |
| 820 21 80-96             | Kapper kpl. 4,5 mm                 | felling foot 4,5 mm                              | 11           |
| 820 21 90-96             | Kapper kpl. 6,5 mm                 | felling foot 6,5 mm                              | 11           |
| 820 22 00-96             | Rollsäumer 2 mm                    | roll hemmer 2 mm                                 | 11           |
| 820 22 10-96             | Säumer mit IDT                     | hemmer with IDT                                  | 11           |
| 820 22 20-96             | 7/9-Lochfuß kpl.                   | 7/9-hole cord foot cpl.                          | 11           |
| 820 22 30-96             | Biesenzunge                        | cording blade                                    | 11           |
| 820 22 40-96             | Biesen-Zierstichfuß kpl. 9 mm      | cording & fancy stitch foot cpl. 9 mm            | 11           |
| 820 22 60-96             | Biesenfuß kpl. 5 Rillen            | cording foot cpl. 5 cords                        | 11           |
| 820 22 70-96             | Biesenfuß kpl. 7 Rillen            | cording foot cpl. 7 cords                        | 11           |
| 820 22 80-96             | Fagotführung 3,5 mm & 5 mm         | fagot guide 3,5 mm & 5 mm                        | 11           |
| 820 23 00-96             | Litzenfuß kpl.                     | braiding foot cpl.                               | 11           |
| 820 23 10-96             | Kräuselfuß Kunststoff kpl.         | shirring foot plastic cpl.                       | 11           |
| 820 23 20-96             | Fransenfuß kpl.                    | fringe sewing foot cpl.                          | 11           |
| 820 23 30-96             | Kräuselfuß Metall kpl.             | shirring foot metal cpl.                         | 11           |
| 820 23 40-96             | Kordonierfuß kpl.                  | single-needle cording foot cpl.                  | 11           |
| 820 23 50-96             | Geradestichfuß mit Rundloch kpl.   | straight stitch foot with round needle hole cpl. | 11           |
| 820 23 60-96             | Fingerschutz                       | finger guard                                     | 11           |
| 820 23 90-96             | Zierstichgleitsohle                | fancy stitch slide shoe                          | 11           |
| 820 24 00-96             | Spezialgleitsohle kpl.             | teflon foot cpl.                                 | 11           |
| 820 24 20-96             | Freihand-Quiltfuß kpl.             | freehand-quilting foot cpl.                      | 11           |
| 820 24 30-96             | Stopffuß kpl.                      | darning foot cpl.                                | 8,11         |
| 820 24 50-96             | Schrägbandeinfasser                | bias tape binder                                 | 11           |
| 820 24 60-96             | Zirkellineal kpl.                  | circular embroidery guide cpl.                   | 11           |
| 820 24 90-96             | Säumer                             | hemmer foot                                      | 8,11         |
| 820 25 50-96             | Mehrstichkräusler                  | multi-stitch gathering foot                      | 11           |
| 820 27 30-96             | Lochstickplatte 4 mm               | eyeletting plate 4 mm                            | 11           |
| 820 27 40-96             | Lochstickplatte 6 mm               | eyeletting plate 6 mm                            | 11           |
| 820 27 60-96             | Rundlochstickplatte                | needle plate (straight stitch)                   | 11           |
| 820 27 70-96             | Stickgleitsohle kpl.               | teflon embroidery foot cpl.                      | 11           |
| 820 27 90-96             | Quiltführung                       | quilt guide                                      | 11           |
| 820 29 10-96             | Lampenwechsler kpl.                | lamp changer cpl.                                | 11           |
| 820 36 40-96             | Spule                              | bobbin   | 11           |
| 820 47 20-96             | Rollenfuß                          | roller foot                                      | 11           |

## Nummernverzeichnis • Numerical Index • Index • Elenco dei Numeri • Índice numérico

|                          | Bezeichnung                       | Description                   | Seite / page |
|--------------------------|-----------------------------------|-------------------------------|--------------|
| 820 47 30-96             | Knopfannähfuß                     | button sew on foot            | 11           |
| 820 47 40-96             | Reißverschlussfuß kpl. (verdeckt) | invisible zipper foot cpl.    | 11           |
| 820 47 90-96             | Biesenfuß kpl. 9 Rillen           | cording foot cpl. 9 cords     | 11           |
| <u>902-1039-001/007</u>  | Motor UUS 390, 230 V              | motor UUS 390, 230 V          | 9            |
| <u>902-1039-003/007</u>  | Motor UUS 393, 120 V              | motor UUS 393, 120 V          | 9            |
| <u>902-2301-020/007</u>  | Fußanlasser AE 020                | foot controller AE 020        | 9            |
| <u>902-2301-023/007</u>  | Fußanlasser AE 023 UL/CSA         | foot controller AE 023 UL/CSA | 9            |
| <u>902-2301-024/007</u>  | Fußanlasser AE 024 SAA            | foot controller AE 024 SAA    | 9            |
| <u>902-3307-924/000</u>  | Einbauleuchte SAA                 | sewing lamp SAA               | 7            |
| <u>902-3307-943/000</u>  | Einbauleuchte UL/CSA              | sewing lamp UL/CSA            | 7            |
| <u>91-000 390-05/000</u> | Linsensenkschraube                | raised countersunk head screw | 3            |
| <u>91-000 678-15/000</u> | Linsensenkschraube                | raised countersunk head screw | 3            |
| <u>91-000 713-15/000</u> | Gewindestift                      | set screw                     | 3            |
| <u>91-001 382-15/000</u> | Stellschraube                     | adjustion screw               | 3            |
| <u>91-002 134-05/000</u> | Zyl. Druckfeder                   | compression spring            | 3            |
| <u>91-009 026-05/000</u> | Blattfeder                        | plate spring                  | 3            |
| <u>91-100 346-15/000</u> | Fl.Kopfschraube m. Ansatz         | pan head screw with shoulder  | 3            |
| <u>91-106 375-05/000</u> | Spulenkapselriegel                | bobbin case bolt              | 3            |
| <u>91-106 376-05/000</u> | Spulenkapselklinke                | bobbin case latch             | 3            |
| <u>91-106 494-05/000</u> | Zyl. Druckfeder                   | helical compression spring    | 3            |
| <u>91-106 524-05/000</u> | Fadenabziehkurve                  | thread pull-off flange        | 3            |
| <u>91-106 527-05/000</u> | Spulenkapselträger                | bobbin case bracket           | 3            |
| <u>91-106 529-05/000</u> | Spulenkapsel                      | bobbin case                   | 3            |
| <u>92-203 077-05/000</u> | Ausgleichscheibe                  | compensating washer           | 6,9          |
| <u>92-203 541-05/000</u> | Ausgleichscheibe                  | compensating washer           | 9            |
| <u>92-226 613-55/000</u> | Einsatzplatte                     | inserted plate                | 7            |
| <u>92-321 753-05/000</u> | Druckfeder                        | compression spring            | 9            |
| <u>92-322 110-91/000</u> | Anker kpl. UUS 21x4               | armature cpl. UUS 21x4        | 9            |
| <u>92-322 111-91/000</u> | Anker kpl. 115 V                  | armature cpl. 115 V           | 9            |
| <u>92-322 142-05/000</u> | Randsteckgehäuse 2-polig          | plug connector housing        | 7            |
| <u>92-322 144-91/000</u> | Lampenleitung kpl.                | lamp cable cpl.               | 7            |
| <u>92-322 149-01/000</u> | Ritzel kpl.                       | pinion cpl.                   | 9            |
| <u>92-322 538-91/000</u> | Feld kpl.                         | field cpl.                    | 9            |
| <u>92-324 982-05/000</u> | Anlaufscheibe                     | buffer disk                   | 6            |
| <u>92-326 081-91/000</u> | Feld kpl.                         | field cpl.                    | 9            |
| <u>92-326 383-91/000</u> | Lampenleitung kpl.                | lamp cable cpl.               | 7            |
| <u>92-326 650-91/000</u> | Lagerschild BS kpl. VDE           | end shield BS cpl. VDE        | 9            |
| <u>92-326 651-91/000</u> | Lagerschild BS kpl. UL            | end shield BS cpl. UL         | 9            |
| <u>92-326 656-85/000</u> | Lagerschild AS                    | end shield AS                 | 9            |
| <u>92-326 661-45/000</u> | Motordeckel kpl.                  | motor cover cpl.              | 9            |
| <u>92-326 898-91/000</u> | Gehäuse kpl.                      | housing cpl.                  | 7            |
| <u>92-328 298-91/000</u> | Lagerschild AS kpl. VDE           | end shield AS cpl. VDE        | 9            |
| <u>92-328 299-45/000</u> | Deckel (Nähleuchte)               | cover (sewing lamp)           | 7            |
| <u>92-328 516-05/000</u> | Kohlebürste                       | carbon brush                  | 9            |
| <u>92-328 535-91/000</u> | Netzschalter                      | main supply switch            | 9            |
| <u>92-328 537-05/000</u> | ISO-Schlauch                      | ISO tube                      | 7            |
| <u>92-328 717-65/000</u> | Schieber                          | bed                           | 9            |
| <u>92-328 810-65/000</u> | Pedal                             | pedal                         | 9            |
| <u>92-328 811-65/000</u> | Pedal                             | pedal                         | 9            |
| <u>92-328 853-91/000</u> | Netzschalter                      | main supply switch            | 9            |
| <u>92-328 971-91/000</u> | Leiterplatte best.                | printed circuit cpl.          | 9            |
| <u>92-328 972-91/000</u> | Leiterplatte best.                | printed circuit cpl.          | 9            |
| <u>92-329 642-91/000</u> | Bürstenbrücke kpl.                | brush rocker cpl.             | 9            |
| <u>92-329 671-91/000</u> | Leiterplatte best.                | PC-board cpl.                 | 9            |
| <u>92-329 672-91/000</u> | Leiterplatte best.                | PC-board cpl.                 | 9            |
| <u>92-329 771-65/000</u> | Anlassergehäuse                   | controllerhousing             | 9            |
| <u>92-329 772-65/000</u> | Anlassergehäuse                   | controllerhousing             | 9            |
| <u>92-329 774-45/000</u> | Druckstück                        | transmitting piece            | 9            |
| <u>92-329 799-45/000</u> | Zugentlastungsschelle             | stress relief clip            | 9            |
| <u>93-030 032-05/000</u> | Spulergelenk                      | bobbin joint                  | 1            |
| <u>93-032 106-44/000</u> | Handrad kpl.                      | hand wheel cpl.               | 2            |
| <u>93-032 107-44/000</u> | Handrad                           | hand wheel                    | 2            |
| <u>93-032 272-05/000</u> | Messer                            | knife                         | 1            |
| <u>93-032 273-05/000</u> | Messerabdeckung                   | knife cover                   | 1            |
| <u>93-032 300-91/000</u> | Greiferlager kpl.                 | hook bearing cpl.             | 3            |
| <u>93-032 334-05/000</u> | Schubwelle                        | shear shaft                   | 3            |
| <u>93-032 336-05/000</u> | Schubwelle                        | shear shaft                   | 3            |
| <u>93-032 593-05/000</u> | Zyl. Druckfeder                   | helical compression spring    | 5            |
| <u>93-032 594-91/130</u> | Träger kpl.                       | bracket cpl.                  | 5            |
| <u>93-032 630-05/000</u> | Träger                            | bracket                       | 4            |



## Nummernverzeichnis • Numerical Index • Index • Elenco dei Numeri • Índice numérico

|                   | Bezeichnung            | Description              | Seite / page |
|-------------------|------------------------|--------------------------|--------------|
| 93-032 631-05/000 | Drucktastenraste       | pressure-key catch       | 4            |
| 93-032 632-05/000 | Feder                  | spring                   | 4            |
| 93-032 633-05/000 | Scheibe                | washer                   | 4            |
| 93-032 634-05/000 | Mutter                 | nut                      | 4            |
| 93-032 635-05/000 | Hülse                  | bush                     | 4            |
| 93-032 637-05/000 | Scheibe                | washer                   | 4            |
| 93-032 645-05/000 | Federblech             | spring assembly          | 4            |
| 93-032 646-45/000 | Brücke                 | bracket                  | 4            |
| 93-033 015-91/000 | Gehäuse mit Buchsen    | housing with sleeves     | 1            |
| 93-033 016-91/000 | Gehäuse mit Buchsen    | housing with sleeves     | 1            |
| 93-033 030-71/000 | Freiarmdeckel kpl.     | free arm cover cpl.      | 1            |
| 93-033 030-91/000 | Freiarmdeckel kpl.     | free arm cover cpl.      | 1            |
| 93-033 031-43/000 | Freiarmklappe          | free arm flap            | 1            |
| 93-033 032-43/000 | Freiarmdeckel          | free arm cover           | 1            |
| 93-033 033-91/000 | Bodenplatte kpl.       | base plate               | 1            |
| 93-033 036-44/000 | Abdeckung kpl.         | cover cpl.               | 1            |
| 93-033 052-44/000 | Garnrollenstift        | spool pin                | 1            |
| 93-033 053-44/000 | Anschlag               | stop                     | 1            |
| 93-033 054-05/000 | Feder                  | spring                   | 1            |
| 93-033 055-35/000 | Fadenführung           | thread guidance          | 1            |
| 93-033 056-05/000 | Feder gebogen          | spring bended            | 1            |
| 93-033 057-25/000 | Fadenführung           | thread guidance          | 1            |
| 93-033 061-05/000 | Winkel links           | angle left               | 1            |
| 93-033 062-05/000 | Winkel rechts          | angle right              | 1            |
| 93-033 063-44/000 | Garnrollenstift        | spool pin                | 8            |
| 93-033 064-05/000 | Filzscheibe            | felt washer              | 8            |
| 93-033 065-44/000 | Griff                  | handle                   | 1            |
| 93-033 075-71/000 | Anschietisch kpl.      | extension plate          | 1            |
| 93-033 075-91/000 | Anschietisch kpl.      | extension plate          | 1            |
| 93-033 076-43/000 | Klappe                 | flap                     | 1            |
| 93-033 082-05/000 | Winkel                 | angle                    | 1            |
| 93-033 096-05/000 | Fadenführung           | thread guidance          | 10           |
| 93-033 100-25/000 | Fadenbremse            | thread retainer          | 10           |
| 93-033 110-91/000 | Träger kpl.            | bracket cpl.             | 1            |
| 93-033 111-91/000 | Spuler kpl.            | bobbin cpl.              | 1            |
| 93-033 112-44/000 | Spulerspindel          | bobbin winder spindle    | 1            |
| 93-033 113-45/000 | Buchse                 | sleeve                   | 1            |
| 93-033 118-55/000 | Schraube 3x8           | screw 3x8                | 1            |
| 93-033 119-43/000 | Freiarm-Abdeckung kpl. | free arm cover cpl.      | 1            |
| 93-033 119-44/000 | Freiarm-Abdeckung kpl. | free arm cover cpl.      | 1            |
| 93-033 140-43/000 | Tasterführung          | key guide                | 1            |
| 93-033 140-44/000 | Tasterführung          | key guide                | 1            |
| 93-033 142-05/000 | Winkel                 | angle                    | 1            |
| 93-033 143-55/000 | Ansatzschraube         | shoulder bolt            | 1,10         |
| 93-033 144-44/000 | Rückwärtshebel         | reverse lever            | 4,5          |
| 93-033 145-44/000 | Motortaste bedr.       | motor key printed        | 1            |
| 93-033 146-55/000 | Linsenschraube         | raised cheese head screw | 1            |
| 93-033 147-55/000 | Schraube M5x30         | screw M5x30              | 1            |
| 93-033 175-44/000 | Einstellscheibe kpl.   | graduated dial           | 4,5          |
| 93-033 185-44/000 | Drucktastenhebel kpl.  | push button lever cpl.   | 4            |
| 93-033 186-44/000 | Drucktastenhebel kpl.  | push button lever cpl.   | 4            |
| 93-033 187-44/000 | Drucktastenhebel kpl.  | push button lever cpl.   | 4            |
| 93-033 245-91/000 | Gehäuseeinlage kpl.    | housing insert cpl.      | 1            |
| 93-033 250-91/000 | ZZ-Aggregat            | ZZ aggregate             | 6            |
| 93-033 251-05/000 | Träger                 | support                  | 6            |
| 93-033 252-05/000 | Kulissenlager          | coulisse bearing         | 6            |
| 93-033 253-44/000 | Stellrad bedr.         | regulating dial printed  | 6            |
| 93-033 256-44/000 | Stellrad bedr.         | adjusting wheel printed  | 6            |
| 93-033 259-05/000 | Drehfeder              | torsion spring           | 6            |
| 93-033 260-91/000 | Stellkurbel kpl.       | adjusting crank cpl.     | 6            |
| 93-033 262-05/000 | Koppel                 | link                     | 6            |
| 93-033 263-91/000 | Lenker kpl.            | guide cpl.               | 2,6          |
| 93-033 269-45/000 | Kulisse                | coulisse                 | 6            |
| 93-033 271-91/000 | Schubstange kpl.       | connecting rod cpl.      | 6            |
| 93-033 300-45/000 | Kurvenblock            | cam block                | 4            |
| 93-033 350-91/000 | Automatik kpl.         | automatic cpl.           | 4            |
| 93-033 353-44/000 | Wählrad bedr.          | dial switch printed      | 6            |
| 93-033 355-91/000 | Automat oben kpl.      | automat above cpl.       | 6            |
| 93-033 356-44/000 | Wählrad bedr.          | dial switch printed      | 6            |
| 93-033 357-91/000 | Schale hinten          | rear cover               | 1            |

## Nummernverzeichnis • Numerical Index • Index • Elenco dei Numeri • Índice numérico

|                   | Bezeichnung                     | Description                          | Seite / page |
|-------------------|---------------------------------|--------------------------------------|--------------|
| 93-033 360-91/000 | Schaltstange kpl.               | switch rod cpl.                      | 5            |
| 93-033 361-05/000 | Zugstange                       | connecting rod                       | 6            |
| 93-033 362-91/000 | Stichsteller kpl.               | feed regulator                       | 5            |
| 93-033 366-44/000 | Schale hinten                   | rear cover                           | 1            |
| 93-033 370-43/000 | Schale vorne                    | front cover                          | 10           |
| 93-033 370-44/000 | Schale vorne                    | front cover                          | 10           |
| 93-033 373-43/000 | Schale vorne                    | front cover                          | 10           |
| 93-033 375-43/000 | Armdeckel kpl.                  | arm cover cpl.                       | 10           |
| 93-033 379-71/000 | Armdeckel kpl.                  | arm cover cpl.                       | 10           |
| 93-033 382-91/000 | Armdeckel kpl.                  | arm cover cpl.                       | 10           |
| 93-033 385-91/000 | Armdeckel kpl.                  | arm cover cpl.                       | 10           |
| 93-033 388-91/000 | Armdeckel kpl.                  | arm cover cpl.                       | 10           |
| 93-033 390-43/000 | Sichtblende bedruckt            | front panel printed                  | 10           |
| 93-033 392-43/000 | Sichtblende bedruckt            | front panel printed                  | 10           |
| 93-033 394-43/000 | Sichtblende bedruckt            | front panel printed                  | 10           |
| 93-033 400-37/000 | Sichtblende bedruckt            | front panel printed                  | 10           |
| 93-033 402-43/000 | Sichtblende bedruckt            | front panel printed                  | 10           |
| 93-033 415-91/000 | Automat oben kpl.               | automat above cpl.                   | 6            |
| 93-033 422-91/000 | Armdeckel kpl.                  | arm cover cpl.                       | 10           |
| 93-033 425-91/000 | Armdeckel kpl.                  | arm cover cpl.                       | 10           |
| 93-033 428-91/000 | Armdeckel kpl.                  | arm cover cpl.                       | 10           |
| 93-033 430-42/000 | Sichtblende bedruckt            | front panel printed                  | 10           |
| 93-033 432-42/000 | Sichtblende bedruckt            | front panel printed                  | 10           |
| 93-033 434-42/000 | Sichtblende bedruckt            | front panel printed                  | 10           |
| 93-033 437-91/000 | Automatik kpl.                  | automatic cpl.                       | 4            |
| 93-033 442-91/000 | Armdeckel kpl.                  | arm cover cpl.                       | 10           |
| 93-033 445-91/000 | Bodenplatte kpl.                | base plate cpl.                      | 1            |
| 93-033 561-43/000 | Fadenspannung kpl.              | thread tension cpl.                  | 3            |
| 93-033 561-44/000 | Fadenspannung kpl.              | thread tension cpl.                  | 3            |
| 93-033 562-43/000 | Kappe                           | cap                                  | 3            |
| 93-033 571-44/000 | Einstellknopf bedr.             | adjusting knob                       | 3            |
| 93-033 580-45/000 | Lager                           | bearing                              | 3            |
| 93-033 610-43/000 | Kofferhaube                     | carrying case                        | 7            |
| 93-033 901-44/000 | Zubehör kpl.                    | accessory cpl.                       | 8            |
| 93-033 902-44/000 | Zubehör kpl.                    | accessory cpl.                       | 8            |
| 93-033 903-44/000 | Zubehör kpl.                    | accessory cpl.                       | 8            |
| 93-034 031-05/000 | Zyl. Zugfeder                   | helical tension spring               | 7            |
| 93-034 126-05/000 | Nadelstange                     | needle bar                           | 2            |
| 93-034 127-15/000 | Nadelhalter                     | needle holder                        | 2            |
| 93-034 128-05/000 | Druckstück                      | transmitting piece                   | 2            |
| 93-034 129-15/000 | Nadelhalterschraube kpl. (grau) | needle holder clip cpl. (light-grey) | 2            |
| 93-034 130-15/000 | Nadelhalterclips                | needle holder clip                   | 2            |
| 93-034 131-25/000 | Fadenführung                    | thread guidance                      | 2            |
| 93-034 133-05/000 | Fadenbremse                     | thread retainer                      | 2            |
| 93-034 632-05/000 | Abtaststück                     | feeler member                        | 4,5          |
| 93-034 633-05/000 | Gewindebuchse                   | insert nut                           | 4,5          |
| 93-035 033-15/000 | Scharnierfeder                  | hinge spring                         | 1            |
| 93-035 050-44/000 | Fadenabziehscheibe              | thread pull-off disk                 | 1            |
| 93-035 066-15/000 | Sicherungsbolzen                | safety bolt                          | 1            |
| 93-035 081-95/000 | Führungsbuchse                  | guide bushing                        | 1            |
| 93-035 087-15/000 | Blattfeder                      | plate spring                         | 3            |
| 93-035 102-91/000 | Armwelle kpl.                   | arm shaft                            | 2            |
| 93-035 111-05/000 | Anlaufscheibe                   | buffer disk                          | 2            |
| 93-035 113-05/000 | Vierkant-Scheibe                | square washer                        | 9            |
| 93-035 119-45/000 | Zahnscheibe                     | crown wheel                          | 2            |
| 93-035 120-05/000 | Flachzahnriemen 160 XL          | cleated belt 160 XL                  | 2            |
| 93-035 121-05/000 | Flachzahnriemen                 | cleated belt                         | 9            |
| 93-035 126-91/000 | Kurbel kpl.                     | crank cpl.                           | 2            |
| 93-035 128-05/000 | Anlaufscheibe                   | buffer disk                          | 2            |
| 93-035 129-91/000 | Pleuel kpl.                     | connecting rod cpl.                  | 2            |
| 93-035 137-91/000 | Kurbelbolzen kpl.               | crank bolt cpl.                      | 2            |
| 93-035 140-45/000 | Schwinge                        | floating lever                       | 2            |
| 93-035 141-05/000 | Bolzen                          | bolt                                 | 2            |
| 93-035 151-05/000 | Gelenkstück, Fertigteil         | joint piece, finished part           | 2            |
| 93-035 155-05/000 | Anlaufscheibe                   | buffer disk                          | 2            |
| 93-035 165-45/000 | Gelenkstück                     | joint piece                          | 2            |
| 93-035 166-05/000 | Exenterbolzen                   | eccentric bolt                       | 5,2          |
| 93-035 168-45/000 | Anschlag                        | limit stop                           | 2            |
| 93-035 169-05/000 | Zugstange                       | connecting rod                       | 2,4          |
| 93-035 183-05/000 | Zyl. Druckfeder                 | helical compression spring           | 2            |

## Nummernverzeichnis • Numerical Index • Index • Elenco dei Numeri • Índice numérico

|                   | Bezeichnung                    | Description                   | Seite / page |
|-------------------|--------------------------------|-------------------------------|--------------|
| 93-035 185-05/000 | Bolzen                         | bolt                          | 2            |
| 93-035 186-11/000 | Stellring kpl.                 | collar cpl.                   | 2            |
| 93-035 192-05/000 | Bolzen                         | bolt                          | 2            |
| 93-035 193-05/000 | Federscheibe                   | spring disk                   | 1,2          |
| 93-035 199-05/000 | Zyl. Druckfeder                | helical compression spring    | 2            |
| 93-035 302-05/000 | Greiferlager                   | hook bearing                  | 3            |
| 93-035 303-05/000 | Buchse                         | bush                          | 3            |
| 93-035 304-91/000 | Kegelrad, getrieben            | bevel wheel, driven           | 3            |
| 93-035 306-05/000 | Anlaufscheibe                  | buffer disk                   | 3,5,7        |
| 93-035 308-05/000 | Gewindestift mit Kegelspitze   | set screw with cone           | 3            |
| 93-035 310-91/000 | Kegelrad kpl.                  | bevel gear cpl.               | 3            |
| 93-035 314-91/000 | Spulenkapselhalter             | bobbin case position finger   | 3            |
| 93-035 320-75/000 | Hubhebel                       | lifting lever                 | 3            |
| 93-035 340-05/000 | Welle                          | shaft                         | 3            |
| 93-035 344-45/000 | Lagerbuchse                    | bearing bushing               | 3            |
| 93-035 345-05/000 | Spitzbolzen                    | center                        | 3            |
| 93-035 347-05/000 | Zyl. Zugfeder                  | helical tension spring        | 3            |
| 93-035 355-91/000 | Schubstange kpl.               | connecting rod cpl.           | 3            |
| 93-035 356-05/000 | Exenterstange                  | eccentric rod                 | 3            |
| 93-035 359-05/000 | Bolzen                         | bolt                          | 3            |
| 93-035 360-91/000 | Zahnrad kpl.                   | gear wheel cpl.               | 3            |
| 93-035 363-91/000 | Stellkurbel kpl.               | regulating crank cpl.         | 4,5          |
| 93-035 366-45/000 | Stellglied                     | regulating link               | 4,5          |
| 93-035 367-05/000 | Scheibe                        | washer                        | 4,5          |
| 93-035 379-05/000 | Greiferantriebswelle           | hook drive shaft              | 3            |
| 93-035 382-45/000 | Schiebeexenter                 | sliding eccentric             | 3            |
| 93-035 405-91/000 | Automatikträger                | automatic bracket             | 6            |
| 93-035 416-45/000 | Kurvenblock                    | set of cams                   | 6            |
| 93-035 422-91/000 | Zahnschwinge kpl.              | toothed floating lever cpl.   | 6            |
| 93-035 435-91/000 | Stützscheibe kpl.              | support plate cpl.            | 6            |
| 93-035 443-05/000 | Schaltstange                   | switch rod                    | 5            |
| 93-035 444-05/000 | Zyl. Druckfeder                | helical compression spring    | 5            |
| 93-035 445-45/000 | Gelenkstück                    | toggle lever                  | 5            |
| 93-035 446-05/000 | Gelenkstift                    | joint pin                     | 5            |
| 93-035 447-05/000 | Zyl. Zugfeder                  | helical tension spring        | 5,6          |
| 93-035 448-05/000 | Zugstange                      | connecting rod                | 6            |
| 93-035 450-91/000 | Tasthebel kpl.                 | feeler lever cpl.             | 6            |
| 93-035 575-15/000 | Führung                        | guide                         | 3            |
| 93-035 576-15/000 | Buchse                         | sleeve                        | 3            |
| 93-035 577-45/000 | Druckstück                     | transmitting piece            | 3            |
| 93-035 584-45/000 | Spannungsauslösehebel          | tension release elver         | 3            |
| 93-035 587-05/000 | Fadenanzugsfeder               | thread check spring           | 3            |
| 93-035 607-45/000 | Zahnrad mit Kurve              | gear wheel with curve         | 4,5          |
| 93-035 609-05/000 | Zyl. Druckfeder                | helical compression spring    | 4            |
| 93-035 610-05/000 | Welle                          | shaft                         | 4            |
| 93-035 611-91/000 | Winkelhebel kpl.               | two-armed lever cpl.          | 4,5          |
| 93-035 615-05/000 | Tasthebel                      | feeler lever                  | 4,5          |
| 93-035 616-05/000 | Blattfeder                     | plate spring                  | 4,5          |
| 93-035 617-05/000 | Welle                          | shaft                         | 4            |
| 93-035 620-45/000 | Tasthebel                      | feeler lever                  | 4            |
| 93-035 624-05/000 | Welle                          | shaft                         | 4            |
| 93-035 625-45/000 | Buchse                         | sleeve                        | 4            |
| 93-035 626-45/000 | Buchse                         | sleeve                        | 4            |
| 93-035 630-91/000 | Abtaststück kpl.               | feeler member cpl.            | 4            |
| 93-035 631-05/000 | Bolzen                         | bolt                          | 4            |
| 93-035 634-05/000 | Zyl. Zugfeder                  | helical tension spring        | 4            |
| 93-035 635-91/000 | Einstellhebel kpl.             | regulating lever              | 4,5          |
| 93-035 638-45/000 | Führungsstück                  | guide                         | 4            |
| 93-035 639-05/000 | Anschlag                       | limit stop                    | 4            |
| 93-035 641-05/000 | Zyl. Zugfeder                  | helical tension spring        | 4,5          |
| 93-035 648-05/000 | Sechskant-Mutter               | hexagonal nut                 | 4,5          |
| 93-035 691-91/000 | Stift mit Scheibe kpl.         | pin with washer cpl.          | 4,5          |
| 93-035 692-05/000 | Stift                          | pin                           | 4,5          |
| 93-035 695-91/000 | Schwingrahmen mit Buchsen kpl. | swing frame with bushing cpl. | 4            |
| 93-035 910-91/000 | ÖL-Tube                        | tube of oil                   | 8            |
| 93-036 048-44/000 | Fadenabziehscheibe             | thread pull-off disk          | 8            |
| 93-036 049-44/000 | Fadenabziehscheibe             | thread pull-off disk          | 8            |
| 93-036 064-45/000 | Kabelführung                   | cable guidance                | 7            |
| 93-036 081-44/000 | Zubehöreinlage                 | accessories enclosure         | 1            |
| 93-036 106-55/000 | Flachkopfschraube              | pan head screw with crank     | 2            |

## Nummernverzeichnis • Numerical Index • Index • Elenco dei Numeri • Índice numérico

|                   | Bezeichnung                      | Description                        | Seite / page |
|-------------------|----------------------------------|------------------------------------|--------------|
| 93-036 108-75/000 | Kappe                            | cap                                | 2            |
| 93-036 109-15/000 | Linsenschraube                   | raised cheese head screw           | 2            |
| 93-036 115-91/000 | Winkel mit Spannrolle            | angle with clamping reel           | 2            |
| 93-036 132-91/000 | Fadenhebel kpl.                  | thread lever cpl.                  | 2            |
| 93-036 146-91/000 | Pendel kpl. (f. die Nadelstange) | pendulum cpl. (for the needle bar) | 2            |
| 93-036 150-91/000 | Kreuzkopf kpl.                   | cross head cpl.                    | 2            |
| 93-036 152-15/000 | Klemmbolzen zum Kreuzkopf        | clamping bolt to cross head        | 2            |
| 93-036 155-15/000 | Scheibe                          | disk                               | 2            |
| 93-036 164-71/000 | Einfädler kpl.                   | needle threader cpl.               | 2            |
| 93-036 166-05/000 | Zyl. Zugfeder                    | tension spring                     | 2            |
| 93-036 176-91/000 | Einfädlerhaken kpl.              | needle threader prong cpl.         | 2            |
| 93-036 195-05/000 | Stoffdrückerstange               | presser bar                        | 2            |
| 93-036 196-15/000 | Schraube                         | screw                              | 2            |
| 93-036 198-15/000 | Hebel                            | lever                              | 2            |
| 93-036 203-91/000 | Kurbel mit Hubexenter            | crank with feed lifting            | 7            |
| 93-036 204-45/000 | Hubexenter                       | feed lifting                       | 7            |
| 93-036 205-91/000 | Hubgetriebe kpl.                 | lifting gear cpl.                  | 7            |
| 93-036 206-01/000 | Zugstange kpl.                   | connecting rod cpl.                | 7            |
| 93-036 209-05/000 | Zyl. Druckfeder                  | helical compression spring         | 7            |
| 93-036 212-91/000 | Schwinge kpl.                    | floating lever cpl.                | 7            |
| 93-036 217-91/000 | Schubgetriebe kpl.               | shear gear cpl.                    | 7            |
| 93-036 225-05/000 | Gelenk                           | joint                              | 7            |
| 93-036 227-91/000 | Schubwelle mit Kurbel            | shear shaft with crank             | 7            |
| 93-036 230-91/000 | Transporthebel kpl.              | top feed lever with foot cpl.      | 7            |
| 93-036 240-15/000 | Zyl. Zugfeder                    | tension spring                     | 7            |
| 93-036 244-05/000 | Schenkelfeder                    | torsion spring                     | 7            |
| 93-036 249-91/000 | Gelenk kpl.                      | joint cpl.                         | 7            |
| 93-036 253-45/000 | Schlauch                         | hose                               | 7            |
| 93-036 257-05/000 | Kreuzkopf                        | cross head                         | 7            |
| 93-036 258-91/000 | Führung kpl.                     | guide cpl.                         | 7            |
| 93-036 285-91/000 | Zugstange mit Kurbel             | connecting rod with crank          | 7            |
| 93-036 286-91/000 | Zugstange kpl.                   | connecting rod                     | 7            |
| 93-036 292-05/000 | Flachkopfschraube                | pan head screw with crank          | 2,3,7        |
| 93-036 297-91/000 | Stellring kpl.                   | collar cpl.                        | 7            |
| 93-036 323-05/000 | Exenterbolzen                    | eccentric bolt                     | 3            |
| 93-036 341-91/000 | Transporteur kpl.                | feeder cpl.                        | 3            |
| 93-036 348-45/000 | Anlaufscheibe                    | buffer disk                        | 7            |
| 93-036 383-91/000 | Zahnscheibe unten                | studded disk below                 | 3            |
| 93-036 562-91/000 | Führung kpl.                     | guide cpl.                         | 2            |
| 93-036 582-25/000 | Spannungsscheibe                 | tension disk                       | 3            |
| 93-036 631-45/000 | Drucktastenraste                 | pressure-key catch                 | 4            |
| 93-036 647-05/000 | Exenterbolzen                    | eccentric bolt                     | 4,5          |
| 93-036 701-71/000 | Nadelstange kpl.                 | needle bar cpl.                    | 2            |
| 93-036 990-91/000 | Knopflochfuß kpl.                | button hole foot cpl.              | 8            |
| 93-037 190-71/000 | Hebel kpl.                       | lever cpl.                         | 2            |
| 93-037 191-44/000 | Schraube                         | screw                              | 2            |
| 93-037 541-44/000 | Träger                           | bracket                            | 3            |
| 93-037 545-05/000 | Umlenkbügel                      | thread guide                       | 3            |
| 93-037 543-45/000 | Lager                            | bearing                            | 3            |
| 93-037 574-05/000 | Führungsbolzen                   | guide bolt                         | 3            |
| 93-037 581-05/000 | Zyl. Druckfeder                  | compression spring                 | 3            |
| 93-037 583-05/000 | Mittlere Scheibe                 | central tension disk               | 3            |
| 93-038 102-91/000 | Fadenhebel mit Schwinge          | thread lever with rocking arm      | 2            |
| 93-038 909-35/000 | Stichplatte                      | needle plate                       | 1            |
| 93-040 184-15/000 | Benzing-Clip U93                 | Benzing-Clip U93                   | 2,4          |
| 93-040 206-05/000 | Zyl. Druckfeder                  | helical compression spring         | 2            |
| 93-040 207-15/000 | Druckstift                       | pressure pin                       | 2            |
| 93-040 224-75/000 | Auslösescheibe                   | balance wheel thumb disk           | 2            |
| 93-040 225-45/000 | Kupplungsstück                   | coupling piece                     | 2            |
| 93-040 226-45/000 | Rasthebel                        | catch lever                        | 2            |
| 93-040 287-05/000 | Zyl. Druckfeder                  | helical compression spring         | 2            |
| 93-040 294-91/000 | Bolzen kpl.                      | bolt cpl.                          | 7            |
| 93-040 358-05/000 | Koppel                           | link                               | 3            |
| 93-040 373-05/000 | Federscheibe                     | spring disk                        | 5,6          |
| 93-040 654-05/000 | Zyl. Zugfeder                    | helical tension spring             | 4            |
| 93-040 735-05/000 | Scheibe                          | washer                             | 2            |
| 93-040 970-45/000 | Spule                            | bobbin                             | 8            |
| 93-041 122-45/000 | Fuß                              | foot                               | 9            |
| 93-041 373-15/000 | Federscheibe                     | spring disk                        | 6            |
| 93-101 757-05/000 | Drehfeder                        | torsion spring                     | 1            |

## Nummernverzeichnis • Numerical Index • Index • Elenco dei Numeri • Índice numérico

|                          | <b>Bezeichnung</b>                | <b>Description</b>                  | <b>Seite / page</b> |
|--------------------------|-----------------------------------|-------------------------------------|---------------------|
| <u>93-101 815-05/000</u> | Spulereibring                     | bobbin winder friction ring         | 1                   |
| <u>93-105 640-15/000</u> | Linsenschraube                    | raised cheese head screw            | 2                   |
| <u>93-249 199-00/000</u> | Unterlagscheibe                   | washer                              | 1                   |
| <u>93-847 979-91/000</u> | Pinself                           | brush                               | 8                   |
| <u>98-694 047-00/000</u> | Gewindestift                      | threaded pin                        | 2                   |
| <u>98-694 814-00/000</u> | Zierstichfuß mit IDT kpl.         | fancy stitch foot with IDT cpl.     | 8                   |
| <u>98-694 816-00/000</u> | Zierstichfuß kpl. (Obertransport) | fancy stitch foot cpl. (upper feed) | 2                   |
| <u>98-694 843-00/000</u> | Reißverschlußfuß kpl.             | zipper foot cpl.                    | 8                   |
| <u>98-694 845-00/000</u> | Blindstichfuß kpl.                | blindstitch foot cpl.               | 8                   |
| <u>98-694 847-00/000</u> | ZZ-Nähfuß kpl.                    | ZZ sewing foot                      | 2                   |
| <u>98-694 864-01/000</u> | Klarsichtfuß kpl.                 | plastic foot clear cpl.             | 8                   |
| <u>98-694 884-00/000</u> | Reißverschlußfuß                  | zipper foot                         | 8                   |
| <u>98-694 886-00/000</u> | Nähfußhalter kpl.                 | sewing foot holder cpl.             | 2                   |
| <u>98-694 889-00/000</u> | Schraube                          | screw                               | 2                   |
| <u>98-694 890-00/000</u> | Blindstichfuß kpl. f. Obertransp. | blind stitch foot cpl. for IDT      | 8                   |
| <u>98-697 548-00/000</u> | Schnecke                          | worm                                | 2                   |
| <u>98-802 422-00/000</u> | Lineal                            | quilter guide                       | 8                   |
| <u>99-053 016-91/000</u> | Trennmesser                       | cutter                              | 8                   |

# PFAFF

© 2005  
Copyright VSM Group AB  
All rights reserved

Printed in Germany

Technische Änderungen vorbehalten

Subject to alterations in design

Sous toute réserve de modifications  
techniques

Salvo modificaciones técnicas

Con riserva di modifiche tecniche