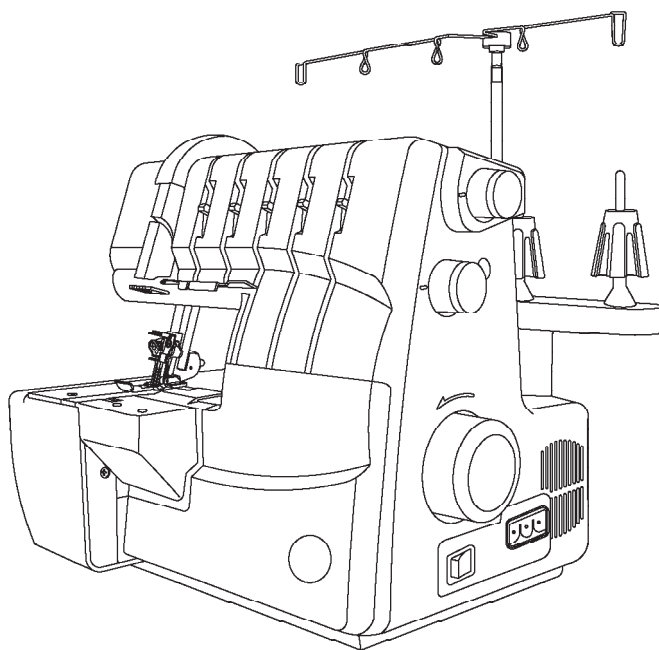


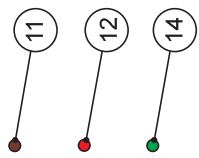


Professional 5 14T968DC

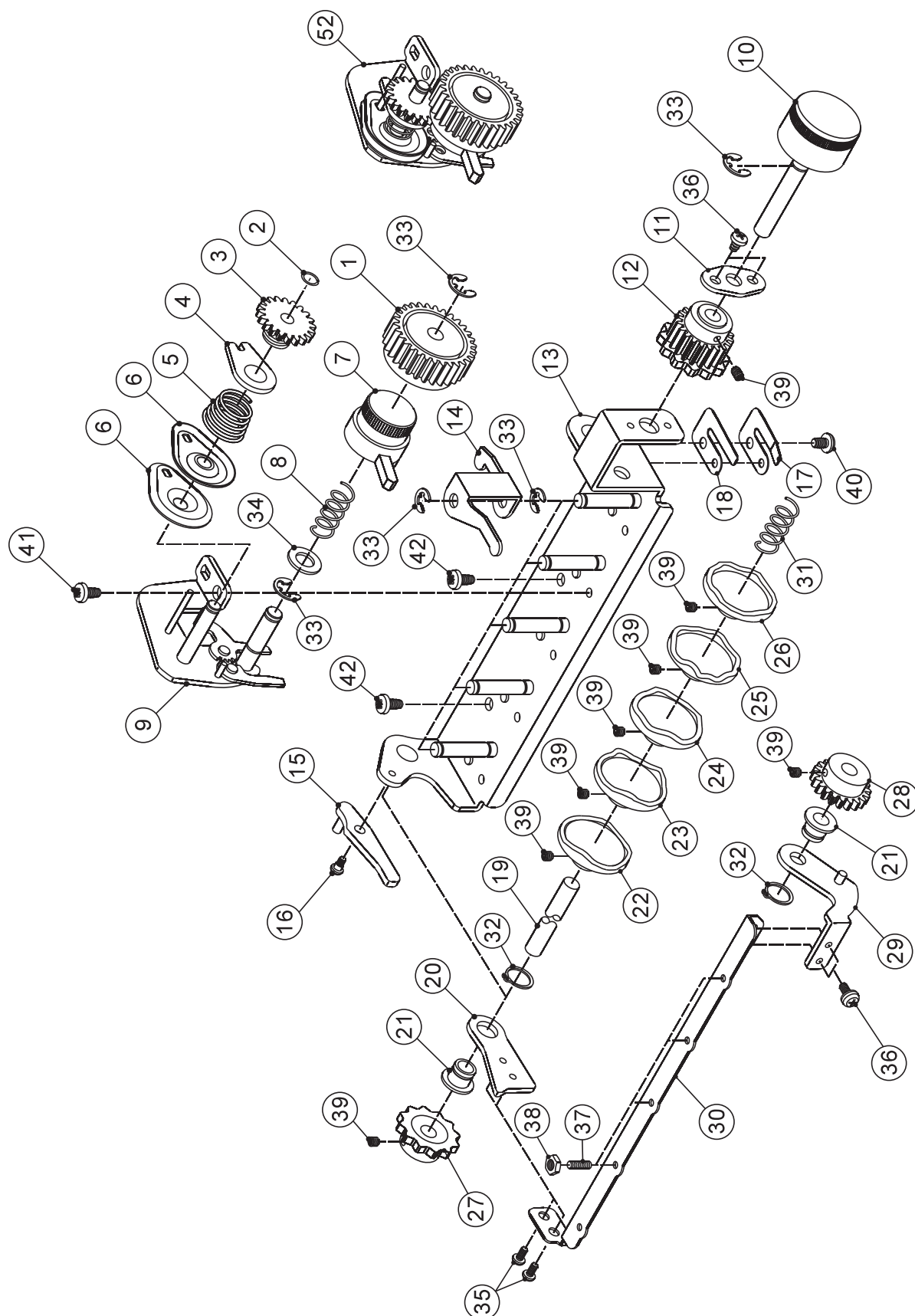


Liste de pièces Lista de Piezas Parts List

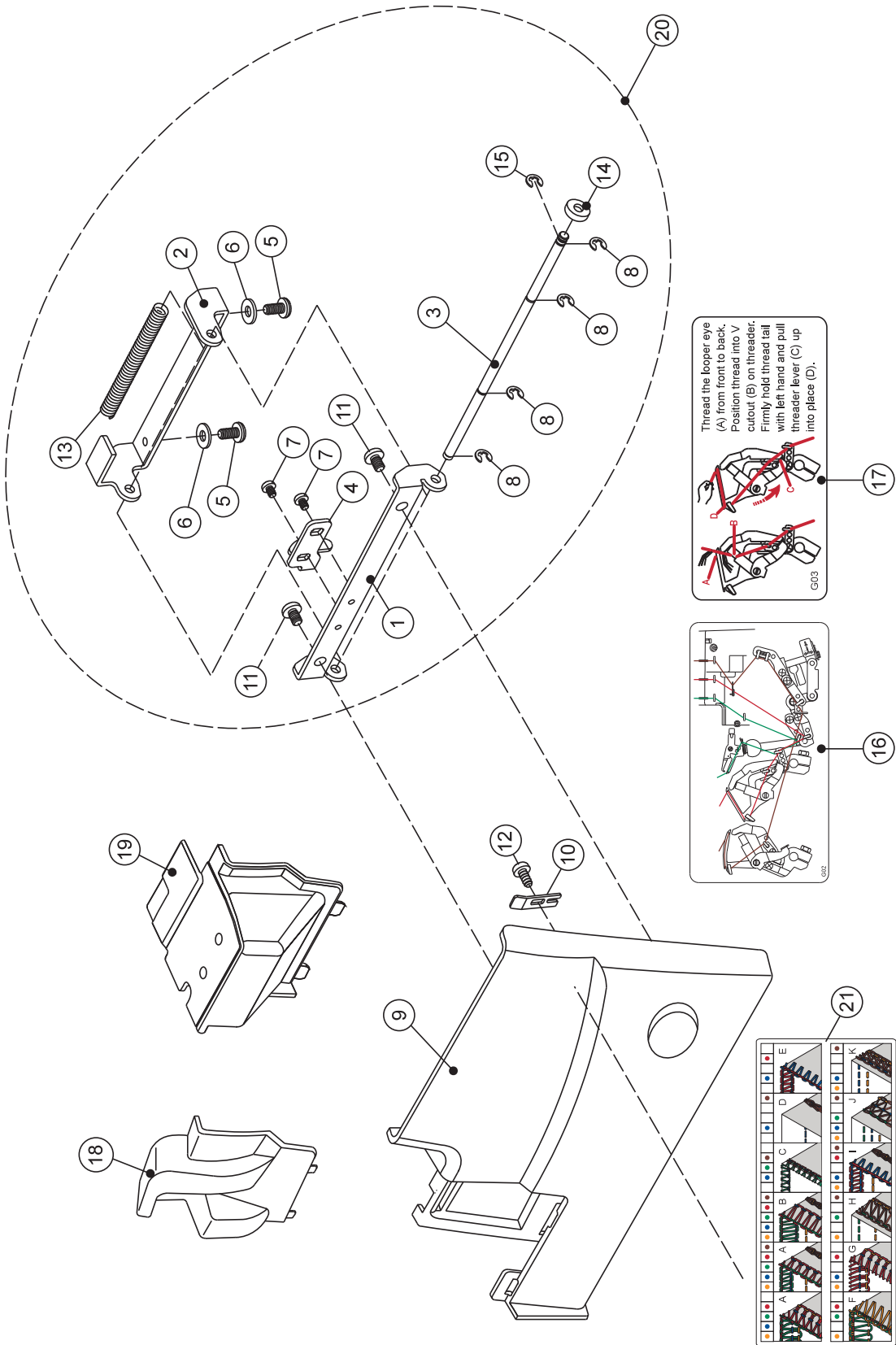
® A registered trademark of The Singer Company Ltd. or its affiliates.
® **Una marca registrada de The Singer Company Ltd. o sus afiliados.**
® *Une marca déposée de The Singer Company Ltd. ou ses filiales.*
© 2022 Singer - All Rights Reserved.



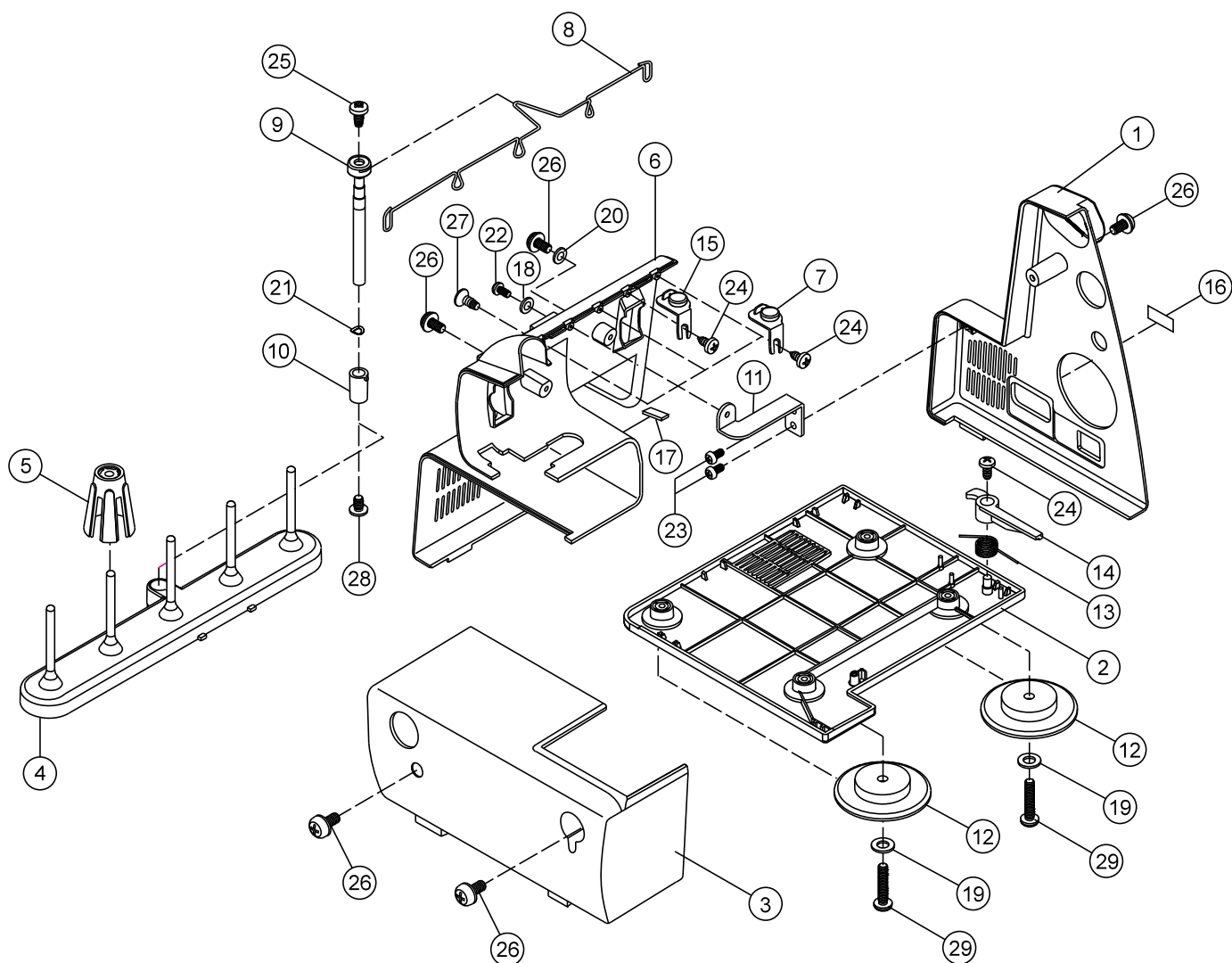
No.	Part No.	Description
1	SEE #23	Front cover
1		Front cover
2	416364201	Thread take-up cover
3	SEE #23	Thread guide (B)
4	416607801	Thread guide (C)
5	270 C10071004	Thread guide (F)
6	270 B10241004	Thread guide (D)
7	270 G6052	Lower looper thread guide (A)
8	416607501	Front cover fixing board
9	270 G5007-567	Bulb cover
9		Bulb cover
10	270 G2068	Lamp cover heatout plate
11	270 A11481499	Color sticker (brown)
12	270 A11481235	Color sticker (red)
13	SEE #23	Clutch changing information sticker
13	SEE #23	Clutch changing information sticker
14	270 A11481250	Color sticker (green)
15	416811101	5*16*105 plate
16	68018061	Washer
17	68016525	Washer
18	68018039	Set screw
19	68017970	Set screw
20	68018300	Set screw
21	68017035	Set screw
22	SEE #23	Front cover set (No. 2.3.4.5.6.7.8.11.12.14.15 and 19 included)
23	270 G5031P001A	Front cover set (No. 1.13 and 22 included)
24		Bulb cover set (No. 9 and 10 included)



No.	Part No.	Description
Note All parts are included in a part set with the “ * ” mark are part components that cannot be ordered alone.		
1	68019004	Tension fine tuning gear
2	68019010	Ring
3	SEE #51	Tension regulate gear
4	SEE #51	Tension regulate nut
5	416359801	Tension spring
6	416359901	Tension disc
7	SEE #52	Tension fine tuning dial (yellow)
7	SEE #52	Tension fine tuning dial (blue)
7	SEE #52	Tension fine tuning dial (green)
7	SEE #52	Tension fine tuning dial (red)
7	SEE #52	Tension fine tuning dial (brown)
8	416366701	Spring
9	416607001	Tension dial holder set
10	270 G6024P001	Auto tension dial selection
11	416606901	Auto tension dial selection shaft holder
12	SEE #43	Tension fixed gear
13	416606801	Tension dial holder
14	SEE #53	Tension transmitting arm
15	68019014	Tension restoring plate
16	68019015	Set screw
17	416606601	Spring
18	416606501	Spring
19	270 G6022	Tension cam shaft
20	SEE #54	Restoring plate (B)
21	68019011	Restoring bushing
22	SEE #46	Tension cam (A)
23	SEE #47	Tension cam (B)
24	SEE #48	Tension cam (C)
25	SEE #49	Tension cam (D)
26	SEE #50	Tension cam (E)
27	SEE #45	Restoring gear
28	SEE #44	Tension gear
29	416606101	Restoring plate (A)
30	416606201	Restoring regulate plate
31	416603801	Spring
32	68019025	C ring
33	68016976	E ring
34	68018489	Washer
35	68018030	Set screw
36	68018032	Set screw
37	68019028	Set screw
38	68019026	Nut
39	68018040	Set screw
40	68018300	Set screw
41	68018301	Set screw
42	68017035	Set screw
*43	68019029	Tension fixed gear set (No. 12.39 included)
*44	68019030	Tension gear set (No. 28.39 included)
*45	68019031	Restoring gear set (No. 27.39 included)
*46	68024633	Tension cam set (No. 22.39 included)
*47	68024634	Tension cam set (No. 23.39 included)
*48	68024635	Tension cam set (No. 24.39 included)
*49	68024636	Tension cam set (No. 25.39 included)
*50	68019038	Tension cam set (No. 26.39 included)
*51	68024638	Tension cam set (No. 3.4 included)
*52	68024639	Tension fine tuning dial set (yellow) (No. 1.2.5.6.7.8.9.33.34.51 included)
*52	68024641	Tension fine tuning dial set (blue) (No. 1.2.5.6.7.8.9.33.34.51 included)
*52	68024645	Tension fine tuning dial set (green) (No. 1.2.5.6.7.8.9.33.34.51 included)
*52	68024646	Tension fine tuning dial set (red) (No. 1.2.5.6.7.8.9.33.34.51 included)
*52	68024648	Tension fine tuning dial set (brown) (No. 1.2.5.6.7.8.9.33.34.51 included)
*53	68024649	Tension transmitting arm set (No. 14.33 included)
*54	68024650	Restoring regulate plate set (No. 20.21.35.37.38 included)



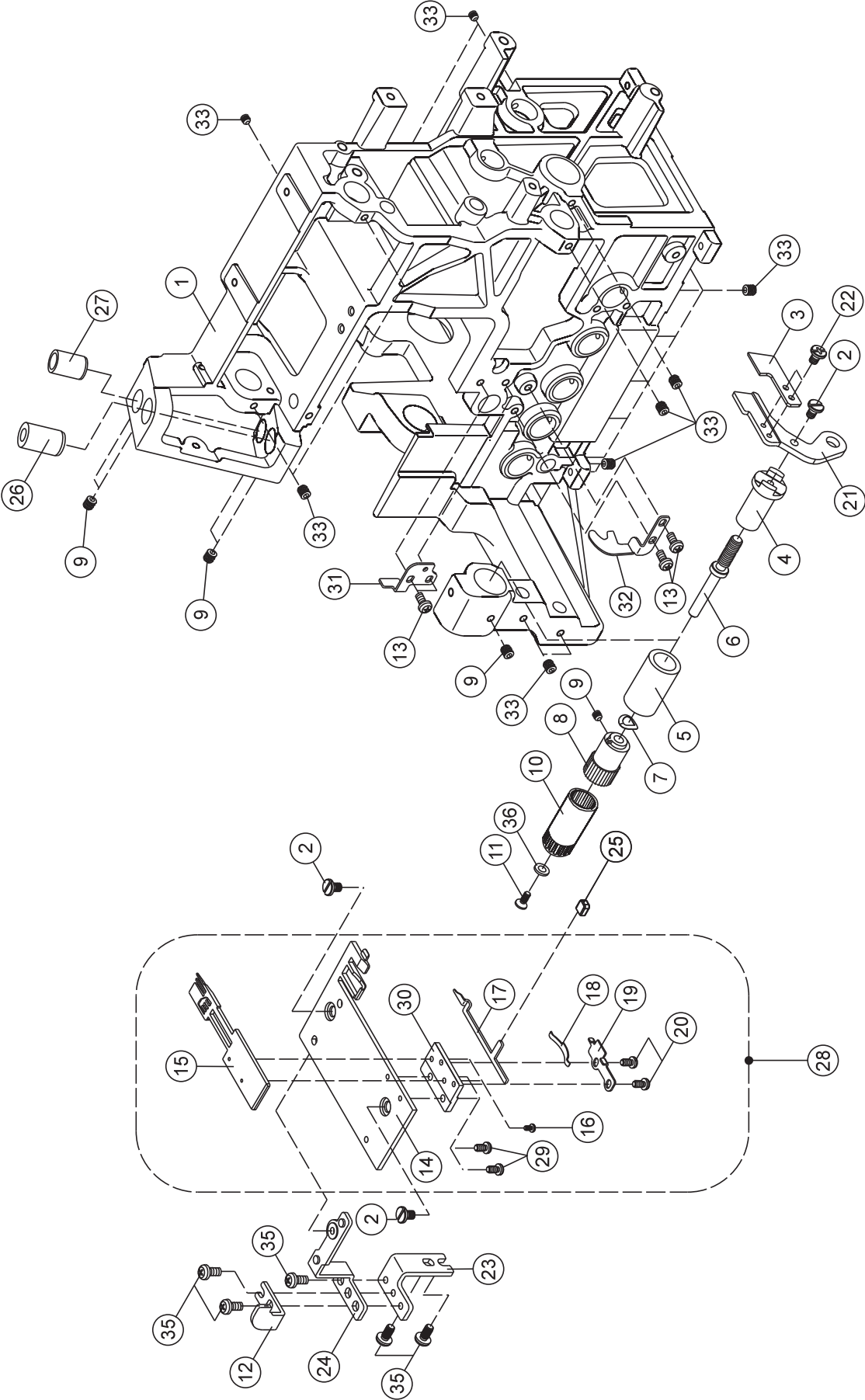
No.	Part No.	Description
1	SEE #20	Looper cover hinge (A)
2	SEE #20	Looper cover hinge (B)
3	SEE #20	Looper cover hinge shaft
4	SEE #20	Hinge locating board
5	68017035	Set screw
6	68016525	Washer
7	SEE #20	Set screw
8	SEE #20	E ring
9	270 G5002P001	Looper cover
10	416377301	Looper cover setting plate
11	68014572	Set screw
12	68017970	Set screw
13	SEE #20	Looper cover hinge spring
14	270 G1211	Connecting press plate
15		E ring
16	270 G5015	Thread guide sticker (G07)
17	270 G5016	Thread guide sticker (G03)
18	270 G5006P001	Looper cover attached cover (A)
19	270 G5008-567	Looper cover attached cover (B)
19		Looper cover attached cover (B)
20	68024651	Looper cover hinge set (No. 1.2.3.4.7.8.13 included)
21	68024652	Thread sticker



No.	Part No.	Description
-----	----------	-------------

Note All parts are included in a part set with the “ * “ mark are part components that cannot be ordered alone.

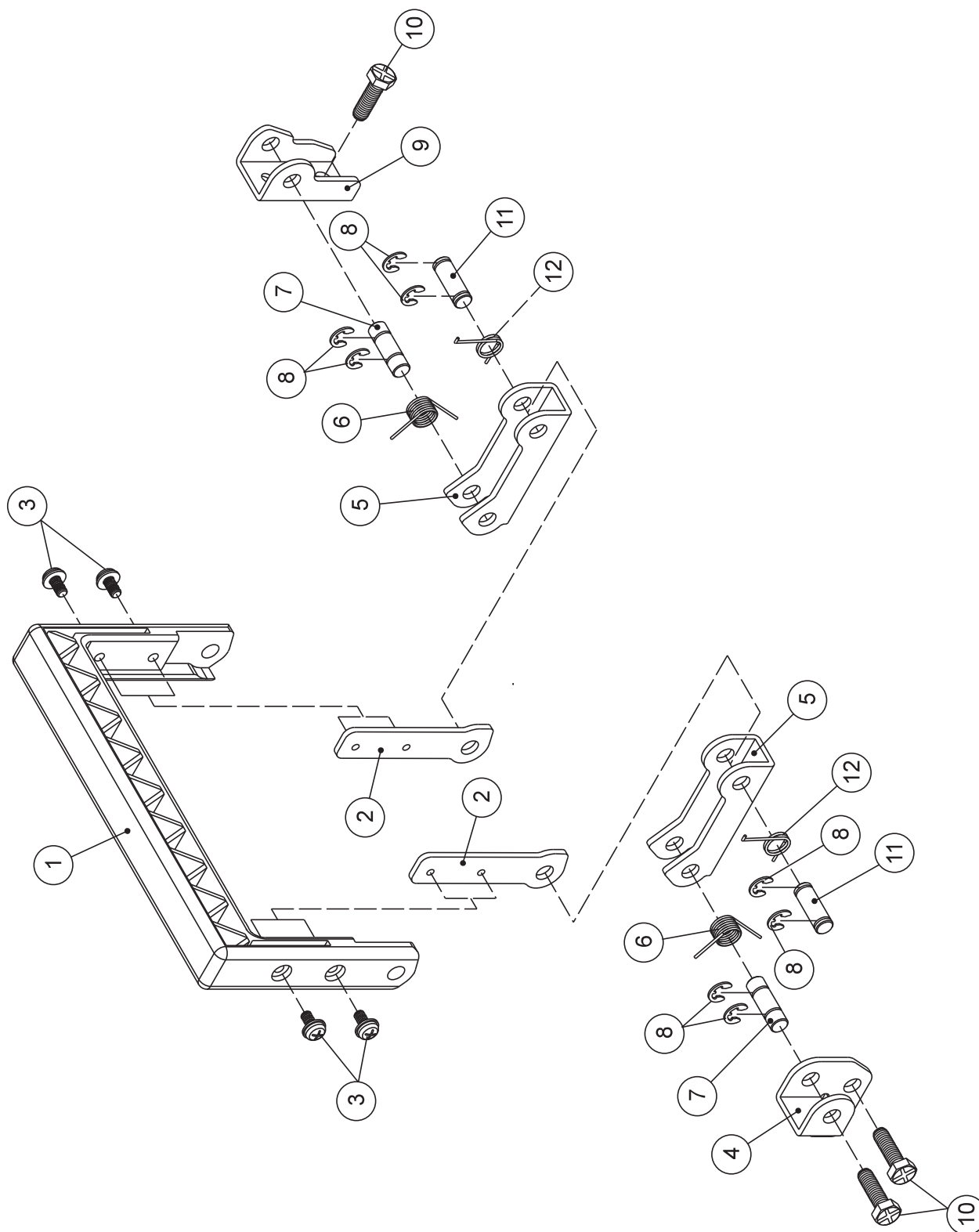
1	270 G5032-567	Side cover
1		Side cover
2	68024497	Base plate
2		Base plate
3	270 G5005-567	Extension table
3		Extension table
4	270 G1220-567	Spool stand
4		Spool stand
5	270 A1V011567	Cone holder
5		Cone holder
6	270 G5004-567	Back cover
6		Back cover
7	416362801	Thread guide plate
8	270 G1252	Thread guide bar
9	416812101	Extension bar
10	270 G1228-567	Extension bar setting
10		Extension bar setting
11	270 G1139	Side cover setting board
12	416361501	Rubber
13	270 G1208	Micro switch contactor spring
14	416361201	Micro switch contactor
15	68024510	Thread guide plate
16		Warning label (Russian)
16	416299001	Warning label (English)
17	416811101	5*16*1.5 plate
18	68018061	Washer
19	68016525	Washer
20		Washer
21		Washer
22	68018039	Set screw
23		Set screw
24	68017970	Set screw
25		Set screw
26	68018053	Set screw
27		Set screw
28	68017938	Set screw
29		Set screw
30		Side cover set (No. 1.11 included)
31		Base plate set (No. 2.13.14.22 included)
32		Back cover set (No. 6.7.17.22 included)
*33	68024512	Thread guide bar set (No. 8.9.10.19.23.26 included)



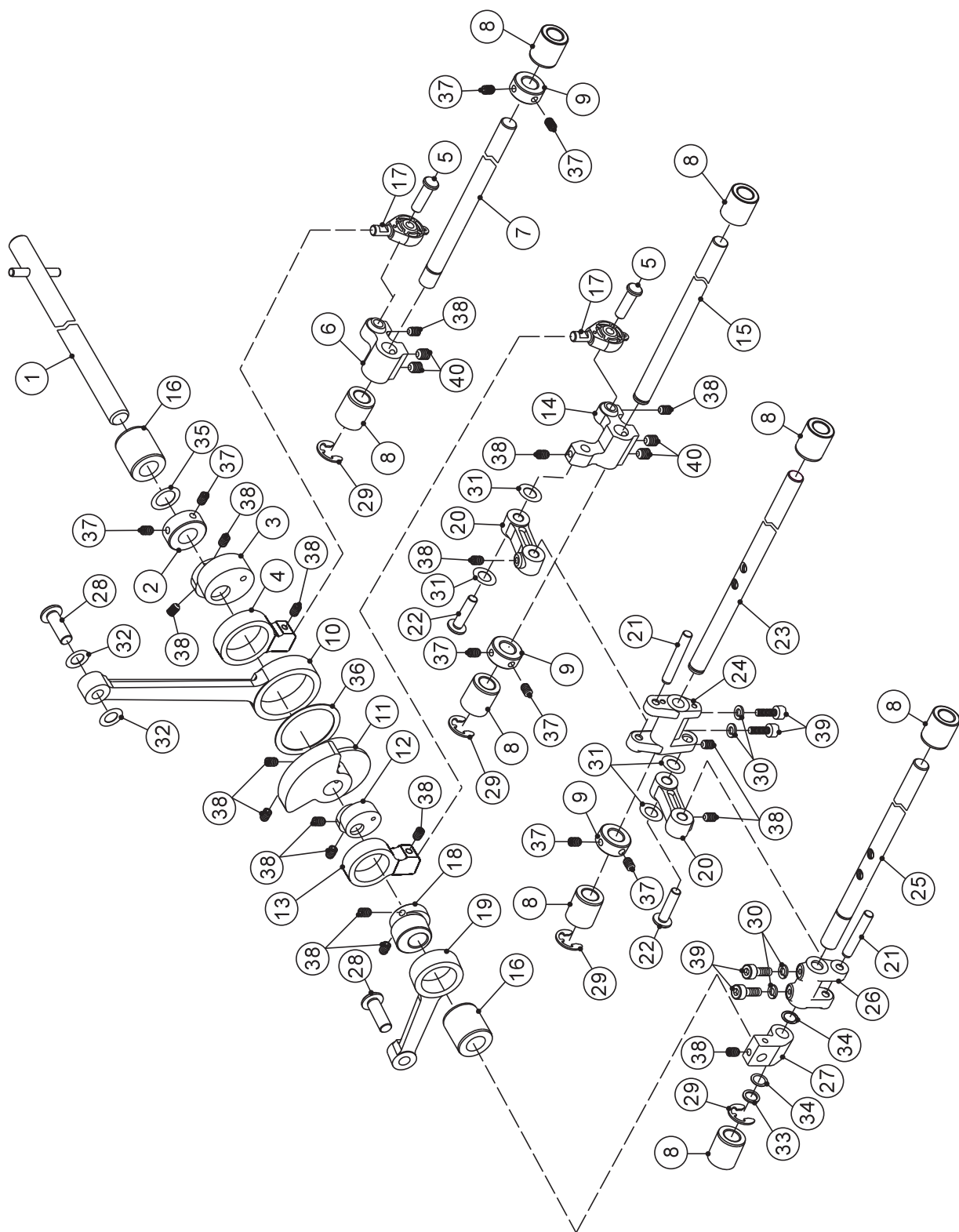
No.	Part No.	Description
-----	----------	-------------

Note All parts are included in a part set with the “ * “ mark are part components that cannot be ordered alone.

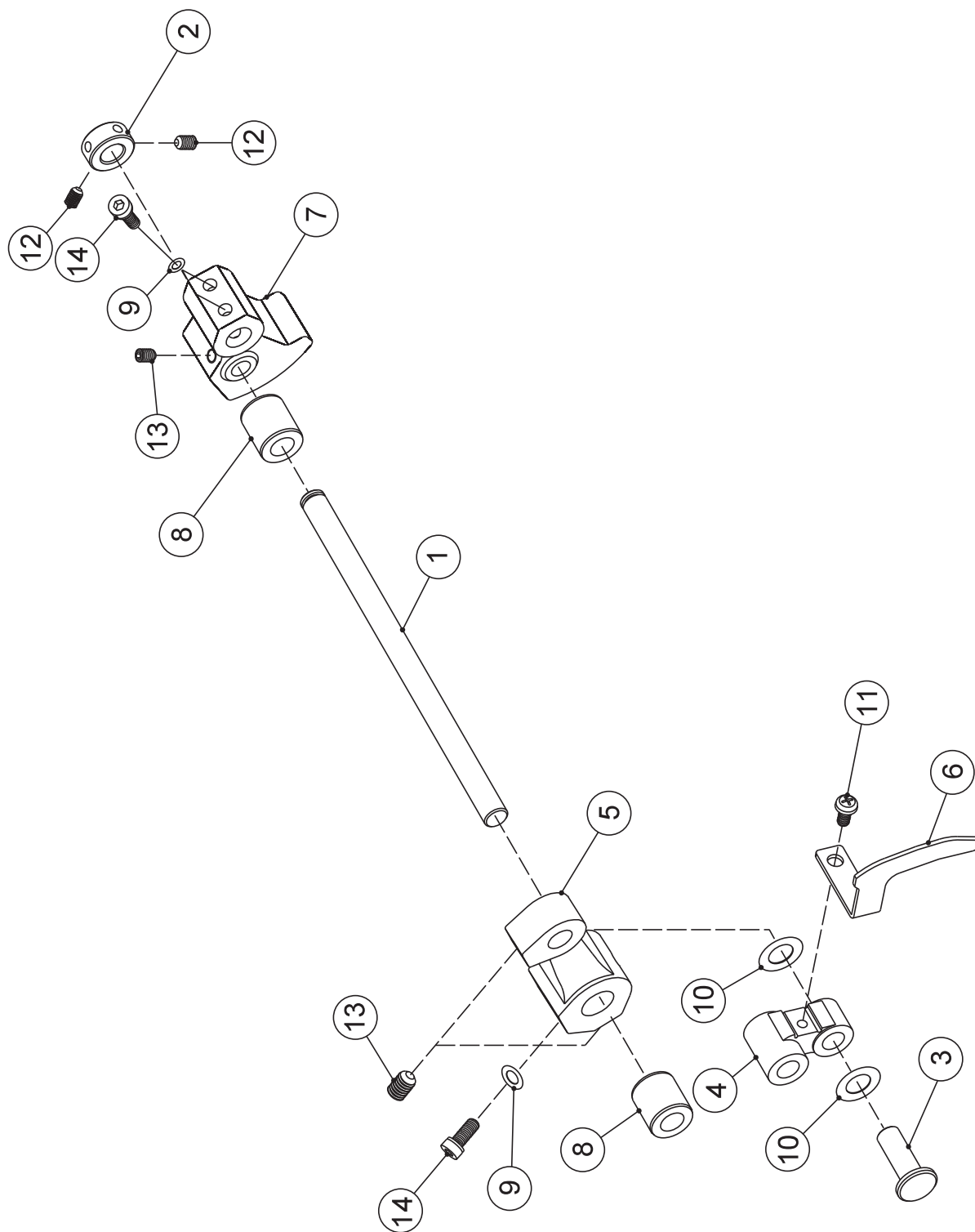
1		Machine frame
2	416427301	Set screw
3	68014359	Lower cutter
4	416361701	Lower cutter holder
5	270 G1244	Lower cutter holder bushing
6	270 G1135	Cutting width knob shaft
7	68017942	Wave washer
8	270 G2055	Cutting width knob
9	68018040	Set screw
10	270 G5013P001	Cutting width dial
11	68018039	Set screw
12	270 G1283	Front feed dog guide board
13	68017035	Set screw
14	SEE #28	Stitch plate
15	270 G1041	Fixed lever
16	68018029	Set screw
17	416361901	Moving lever
18	416362001	Locating spring
19	270 G1132	Moving lever holder
20	68018030	Set screw
21	416362101	Lower cutter support
22	68018032	Set screw
23	SEE #38	Needle plate locating board support
24	SEE #38	Needle plate locating board
25	416362201	Stitch finger lever cover
26	68017985	Needle bar bushing
27	416815101	Presser bar bushing
28	416362301	Stitch plate set (No. 14.15.16.17.18.19.20.29.30 included)
29	68018036	Set screw
30	270 G2091	Fixed board
31	270 G1154	Feed dog holder guide board (rear)
32	270 G1153	Feed dog holder guide board (front)
33	68018041	Set screw
34		Lower knife set (No. 7.8.9 included)
35	68018053	Set screw
36	68018061	Washer
*37	68024516	Cutting width knob set (No. 8.9 included)
38	416815201	Needle plate locating board Set (No. 12.23.24.35 included)
39		Lower cutter support set (No. 3, 21 and 22 included)



No.	Part No.	Description
1	270 G1195-567	Handle
1		Handle
2	270 G1194	Handle holder
3		Set screw
4	270 G1196	Handle supporter (A)
5	270 G1192	Handle link
6	270 G1197	Handle spring (B)
7	270 G1200	Handle link pin (B)
8	68016976	E ring
9	270 G1193	Handle supporter (B)
10		Set screw
11	270 G1198	Handle link pin (A)
12	270 G1199	Handle spring (A)
13	416815301	Handle supporter (A) Set (No. 4.5.6.7.8 included)
14	416815401	Handle supporter (B) Set (No. 5.6.7.8.9 included)
15	416815501	Handle Set (No. 1.2.3 included)



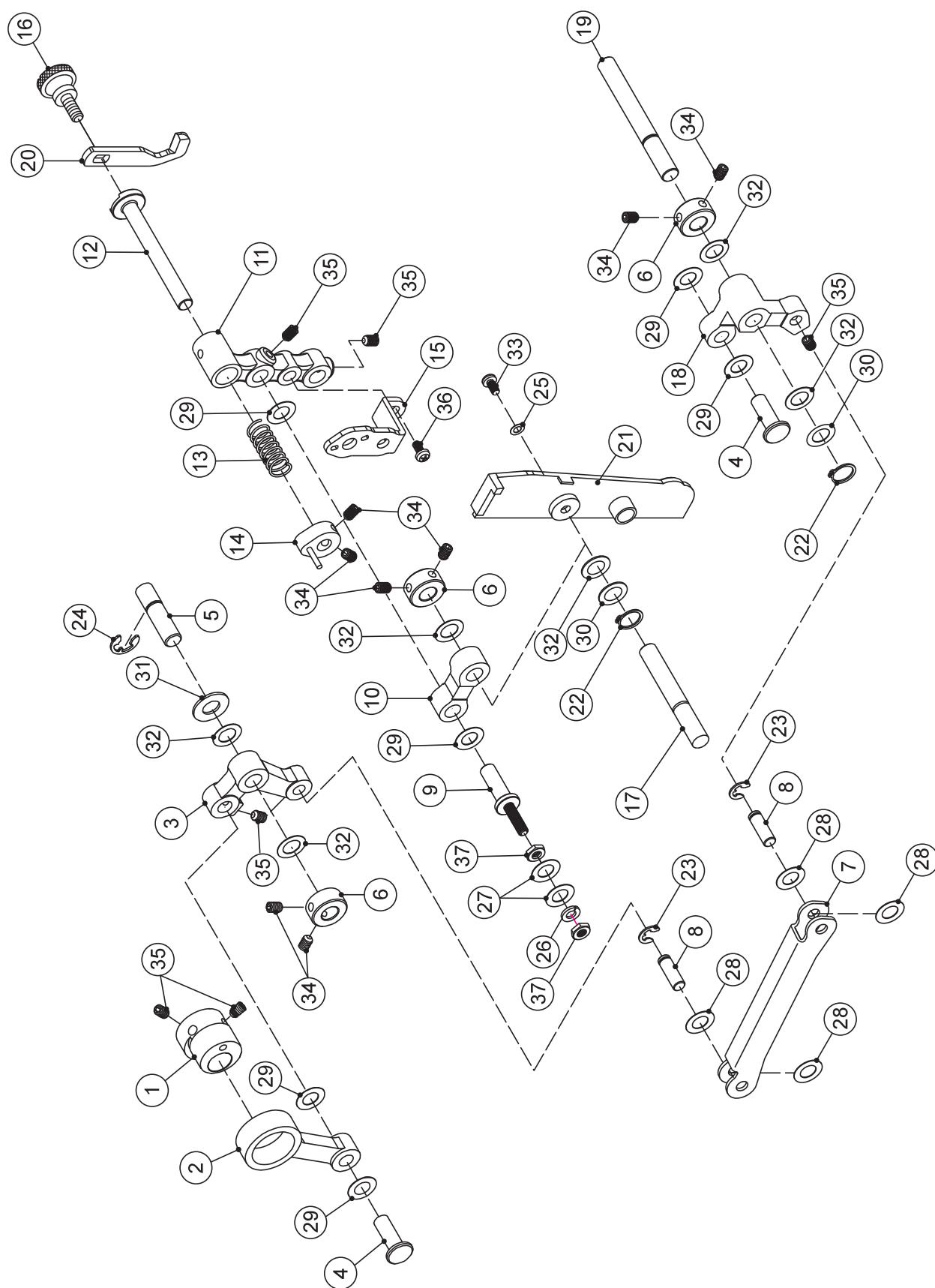
No.	Part No.	Description
Note All parts are included in a part set with the “ * “ mark are part components that cannot be ordered alone.		
1	270 G10602	Main shaft set
2	SEE #50	Setting collar
3	SEE #51	Looper cam(A)
4	SEE #53	Looper link
5	68018357	Looper shaft link pin
6	SEE #41	Looper shaft link
7	270 G1062	Upper looper shaft
8	416816801	Looper shaft bushing
9	SEE #42	Setting collar
10	416363301	Needle bar connecting bar
11	416363501	Needle bar cam
12	SEE #44	Lower looper cam
13	SEE #49	Looper link (B)
14	SEE #45	Looper shaft link
15	270 G1058	Cover stitch driving shaft
16	416380901	Main shaft bushing
17	416600201	Bearing
18	SEE #46	Cover stitch looper cam
19	270 G3015	Cover stitch link
20	SEE #47	Waver link bar
21	68018133	Waver link bar pin (B)
22	270 G1013	Waver link bar pin (A)
23	270 G3017	Lower looper shaft
24	SEE #48	Lower looper shaft link (B)
25	270 G3018	Cover stitch shaft
26	68024522	Waver stitch shaking arm
27	SEE #52	Axial driver
28	270 A10831000	Feed dog link pin (B)
29	68018027	E ring
30	68018065	Washer
31	68018374	Washer
32	68018070	Washer
33		Washer
34	68018377	Washer
35	68018161	Washer
36		Washer
37	68018040	Set screw
38	68018041	Set screw
39	68018458	Set screw
40	68018151	Set screw
*41	68024531	Looper shaft link Set (No. 6, 38 and 40 included)
*42	416816101	Setting collar Set (No. 9 and 37 included)
*43	68024549	Needle bar cam Set (No. 11 and 38 included)
*44	416600501	Lower looper cam Set (No. 12 and 38 included)
*45	68024550	Looper shaft link Set (No. 14, 38 and 40 included)
*46	416816201	Cover stitch looper cam Set (No. 18 and 38 included)
*47	68024569	Waver link bar Set (No. 20 and 38 included)
*48	68024570	Lower looper shaft link (B) Set (No. 24 and 38 included)
*49	68024571	Looper link (B) Set (No. 13 and 38 included)
*50	68018162	Setting collar set (No. 2 and 37 included)
*51	416599901	Looper cam (A) set (No. 3 and 38 included)
*52	416816501	Shaft driving support set (No. 27 and 38 included)
*53	68024576	Looper link (B) set (No. 4 and 38 included)
54		Looper link set (No. 5, 17, 41 and 53 included)
55		Looper cam (A) set (No. 51 and 54 included)
56		Cover stitch looper cam set (No. 19 and 46 included)
57		Waver stitch shaking arm set (No. 21, 22, 26, 31, 47 and 48 included)



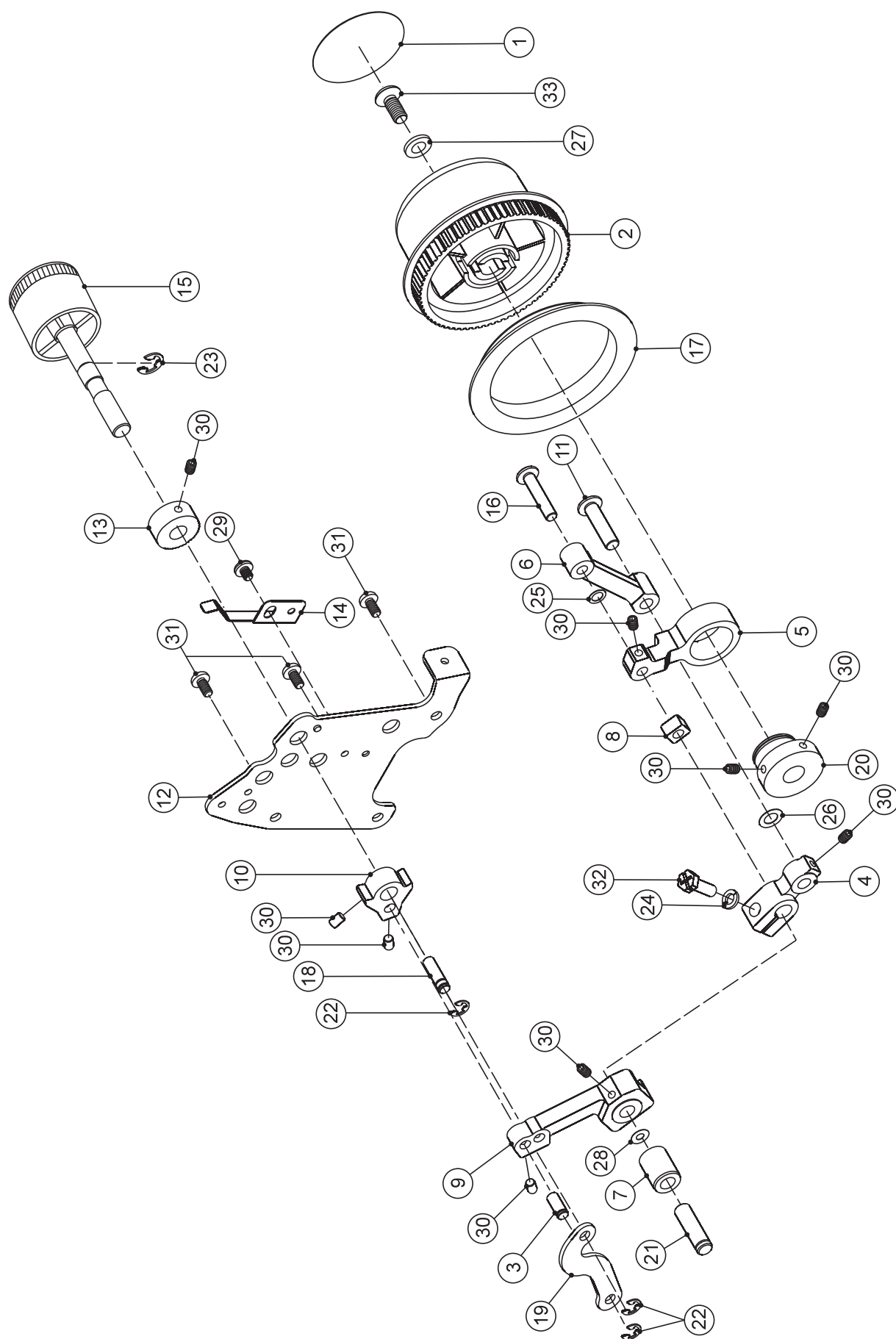
No.	Part No.	Description
-----	----------	-------------

Note All parts are included in a part set with the “ * “ mark are part components that cannot be ordered alone.

1	416816901	Needle bar link shaft
2	SEE #15	Setting collar
3	270 A10831000	Feed drive link pin (B)
4	68018009	Needle bar connecting arm
5	SEE #16	Needle bar crank
6	416377801	Needle bar thread take-up lever
7	SEE #17	Needle bar crank
8	416817101	Looper shaft bushing
9	68018065	Washer
10	68018070	Washer
11	68018039	Set screw
12	68018040	Set screw
13	68018041	Set screw
14	68018059	Set screw
*15	416816101	Setting collar set (No. 2 and 12 included)
*16	416599601	Needle bar crank set (No. 5 and 13 included)
*17	68024577	Needle bar crank set (No. 7 and 11 included)



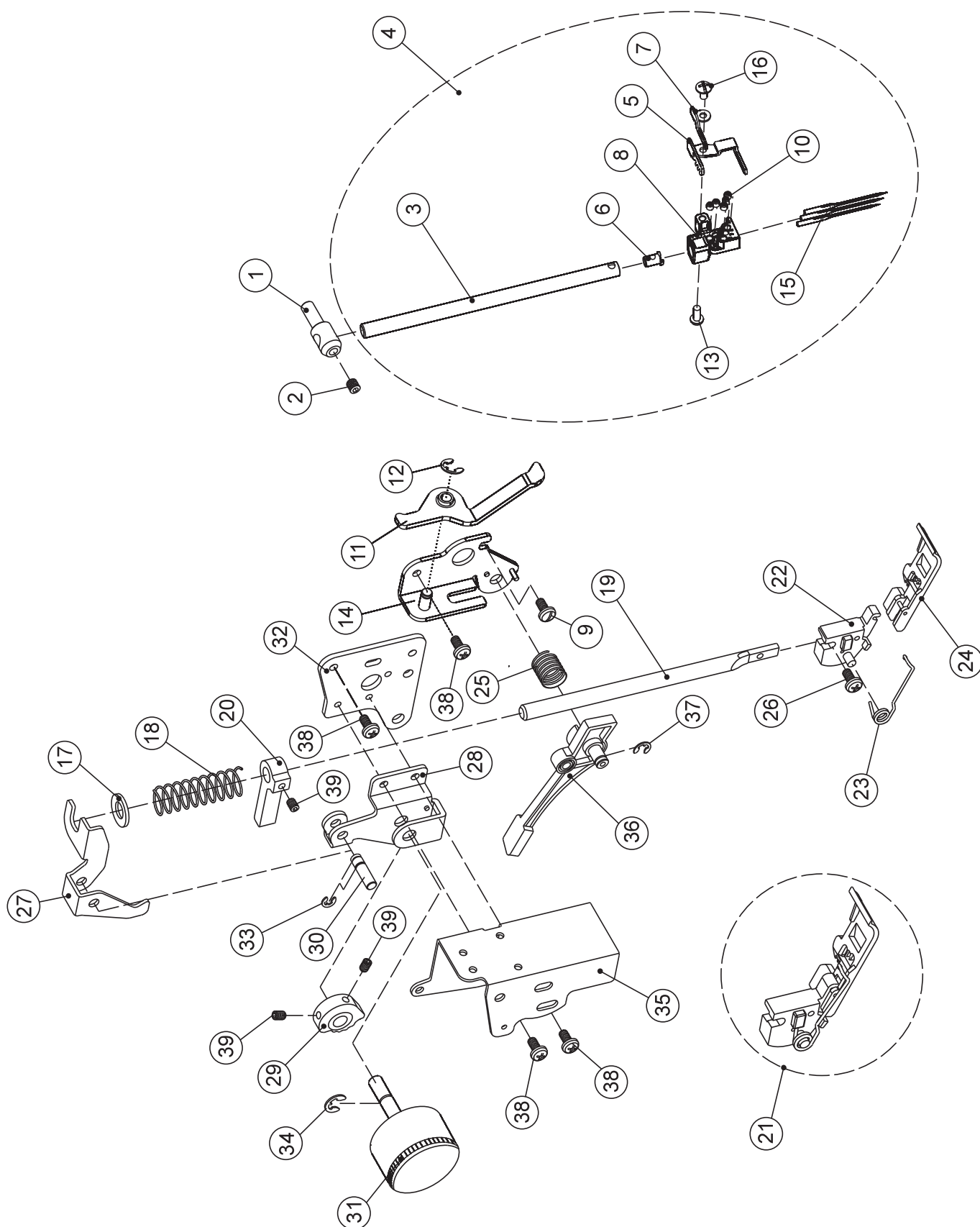
No.	Part No.	Description
Note All parts are included in a part set with the “ * ” mark are part components that cannot be ordered alone.		
1	SEE #40	Upper knife cam
2	270 G1081	Upper knife shake link
3	SEE #41	Upper knife shake arm
4	270 A10831000	Feed drive link pin (B)
5	270 G1225	Upper knife shake arm shaft
6	SEE #38	Setting collar
7	270 G1083	Upper knife link
8	68024578	Upper knife link pin
9	270 G1143	Upper Knife arm shaft
10	270 G1073	Upper knife arm support bar
11	SEE #42	Upper knife arm
12	270 G2035	Upper knife holder
13	416364301	Upper knife spring
14	416364401	Upper knife setting collar
15	270 G1142	Upper knife holder support
16	416292601	Set screw
17	270 G1133	Upper knife arm support bar shaft
18	SEE #39	Upper knife arm drive arm
19	270 G1146	Upper knife shake arm shaft
20	416364601	Upper knife
21	270 G5009-567	Upper knife set cover
22		C ring
23	68016976	E ring
24	68018027	E ring
25	68018061	Washer
26	68018065	Washer
27	68016525	Washer
28	68018374	Washer
29	68018070	Washer
30	68018071	Washer
31	68018490	Washer
32	68018072	Washer
33	68018039	Set screw
34	68018040	Set screw
35	68018041	Set screw
36	68018534	Set screw
37	68019086	Nut
*38	68024579	Setting collar set (No. 6 and 34 included)
*39	68024597	Upper knife arm drive arm set (No. 18 and 35 included)
*40	68024608	Upper knife cam set (No. 1 and 35 included)
*41	68024632	Upper knife shake arm set (No. 3 and 35 included)
*42	416671901	Upper knife arm set (No. 11 and 35 included)



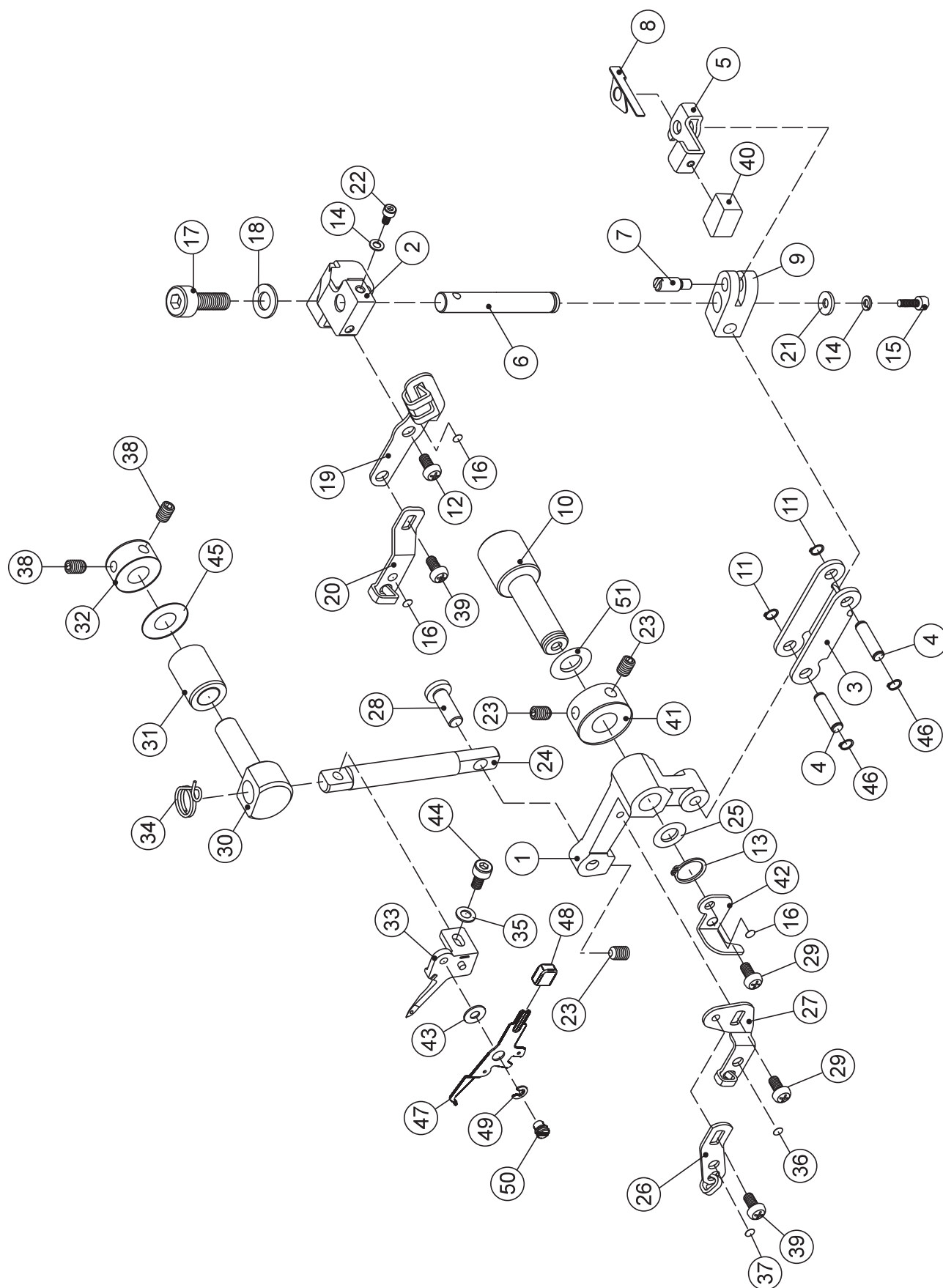
No.	Part No.	Description
-----	----------	-------------

Note All parts are included in a part set with the “ * “ mark are part components that cannot be ordered alone.

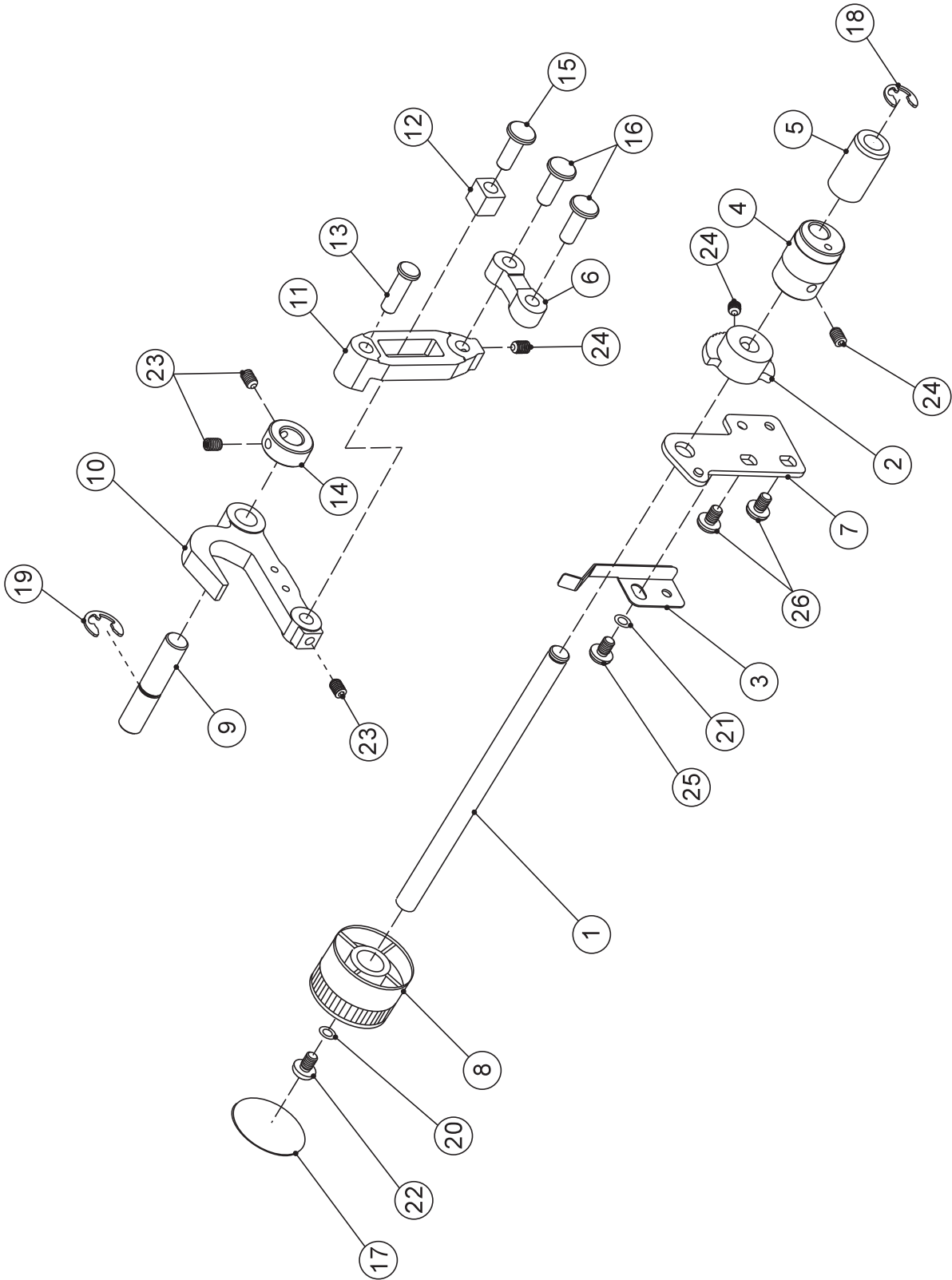
1	270 A11151211	Handwheel decorate plate
1		Handwheel decorate plate
2	SEE #35	Handwheel
2		Handwheel
3	416817301	Feed driving lever pin
4	SEE #38	Feed link
5	SEE #34	Feed driving lever
6	416817601	Feed driving lever
7	68017821	Feed regulate holder shaft
8	416365401	Feed slide block
9	SEE #37	Feed slide holder
10	SEE #40	Feed regulate link
11	416817901	Feed regulate cam
12	416818001	Feed regulate holder
13	SEE #36	Locating collar
14	68024653	Locating spring
15	68024654	Stitch length dial
16	68018294	Feed dog holder pin
17	SEE #35	Handwheel setting collar
17		Handwheel setting collar
18	416818201	Feed regulate link pin
19	416818301	Transmission connection lever
20	SEE #39	Feed cam
21	68018292	Feed regulate holder shaft
22	68016976	E ring
23	68018027	E ring
24	68018309	Washer
25	68018160	Washer
26	68018070	Washer
27		Washer
28	68018072	Washer
29	68018300	Set screw
30	68018041	Set screw
31	68017035	Set screw
32	68018303	Set screw
33		Set screw
*34	416818401	Feed driving lever set (No. 5 and 30 included)
*35	416818501	Handwheel set (No. 2.17 included)
*36	416818601	Locating collar set (No. 13 and 30 included)
*37	416818701	Feed slide holder set (No. 9 and 30 included)
*38	416818801	Feed link set (No. 4, 24, 30 and 32 included)
*39	416818901	Feed cam set (No. 20 and 30)
*40	416819001	Feed regulate link (No. 10 and 30 included)
41		Stitch length dial set (No. 10, 12, 13, 14, 15, 23 and 29 included)
42		Feed slide holder set (No. 3, 7, 9, 18, 19, 21, 22, 28 and 30 included)



No.	Part No.	Description
1	416295801	Needle bar setting link
2	68018151	Set screw
3	416819101	Needle bar
4	SEE #41	Needle clamp complete set (No. 15 and 41 included)
5	416365801	Needle clamp thread guide
6	68018035	Needle clamp nut
7	416381401	Thread guide attached plate
8	416819401	Needle clamp
9	416427301	Set screw
10	416365901	Set screw
11		Release plate
12	68017912	E ring
13	68014360	Set screw
14		Presser bar lifter holder
15		Needle
15		Needle
15		Needle
15		Needle
16	68018039	Set screw
17	68018490	Washer
18	416366201	Presser bar spring
19	416366301	Presser bar
20	416366401	Presser bar setting link
21	416390801	Presser foot complete set (No. 22.23.24.26 included)
22	416366501	Presser foot holder
23	416366601	Presser foot spring
24	416472701	Presser foot
25	416366701	Presser bar lifter spring
26	68018482	Set screw
27	416367401	Needle bar locate board
28	270 G1186	Needle bar locate support
29	SEE #43	Needle bar locate cam
30	270 G1188	Needle bar locate pin
31		Presser bar dial
31		Presser bar dial
31	270 G5011P001	Presser bar dial
32	270 G2015	Support setting board
33	68016976	E ring
34	68018027	E ring
35	270 G1191	Bulb holder
36	416367601	Presser bar lifter
37	68018024	E ring
38	68017035	Set screw
39	68018040	Set screw
40	416819601	Needle bar setting link Set (No. 1 and 2 included)
41	416672002	Needle bar Set (No. 3.5.6.7.8.10.13 and 16 included)
42	416819801	Presser bar setting link Set (No. 20 and 39 included)
43	416819901	Needle bar locate cam Set (No. 29 and 39 included)
44	416820001	Presser bar lifter Set (No. 36 and 37 included)
45		Presser bar lifter holder Set (No. 11.12 and 14 included)



No.	Part No.	Description
Note All parts are included in a part set with the “ * “ mark are part components that cannot be ordered alone.		
1	SEE #53	Upper looper connecting arm
2	SEE #54	Waver supporter
3	270 G1004	Waver slide block link
4	270 G1015	Waver slide block pin
5	270 G1006	Waver slide block
6	270 G1007	Waver shaft
7	270 G1008	Waver slide block pin
8	270 G1009	Waver slide block locating spring
9	68024671	Waver slide block
10	270 G1061	Slide shaft holder
11	68017912	E ring
12	68017033	Set screw
13	68019025	C ring
14	68018153	Washer
15	68018533	Set screw
16	270 A11481499	Color sticker (brown)
17	68018152	Set screw
18	68018309	Washer
19	270 G1253	Cover stitch looper thread take-up lever (A)
20	270 G1267	Cover stitch looper thread take-up lever (B)
21	270 G1017	Washer
22	68018455	Set screw
23	68018041	Set screw
24	416473001	Slide shaft
25		Washer
26	416369001	Upper looper thread take-up lever
27	416368901	Lower looper thread take-up lever
28	270 G1296	Slide shaft pin
29	68018039	Set screw
30	270 G1085	Slide shaft holder
31	416368301	Slide shaft holder bushing
32	SEE #57	Setting collar
33	416367901	Upper looper
34	416368201	Upper looper threading guide
35	68016499	Washer
36	270 A11481235	Color sticker (red)
37	270 A11481250	Color sticker (green)
38	68018040	Set screw
39	68018030	Set screw
40	270 G1080	Locating board cover
41	SEE #52	Setting collar
42	270 G1030	Cover stitch looper thread take-up (A)
43	68018061	Washer
44	68016178	Set screw
45	68018072	Washer
46		E ring
47	416368001	Two thread converter
48	416362201	Moving lever cover
49	68017912	E ring
50	416368101	Set screw
51	68018377	Washer
*52	416816101	Setting collar Set (No. 38. 41 included)
*53	68024655	Upper looper connecting arm Set (No.1. 23 included)
*54	68024657	Waver supporter Set (No. 2.17.18 included)
55		Cover stitch looper thread take-up lever (A) Set (No. 16.19.20.39 included)
56		Cover stitch looper thread take-up (A) Set (No. 16.42 included)
*57	68024579	Setting collar Set (No. 32.38 included)
58		Upper looper Set (No. 33.43.47.48.49.50 included)

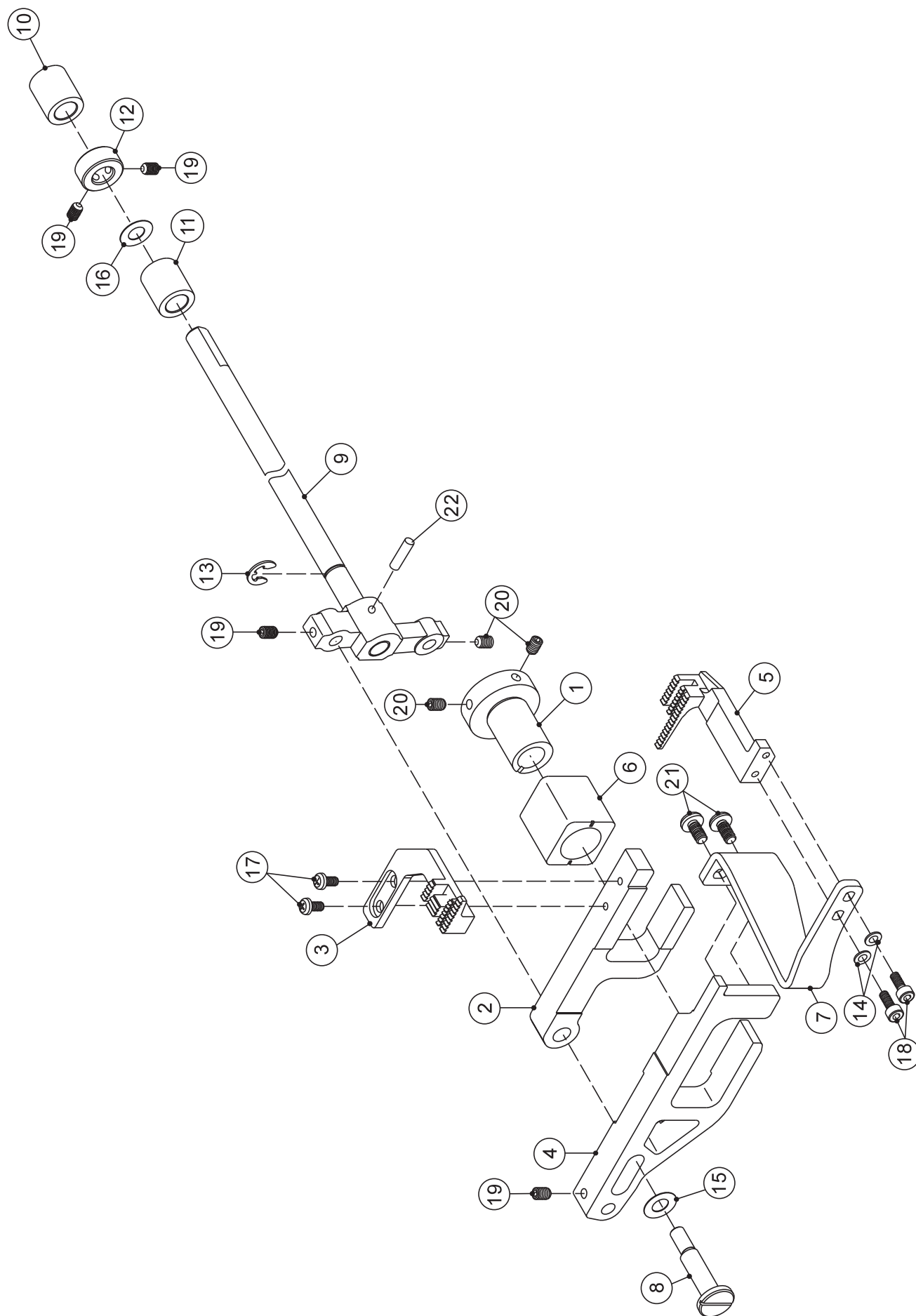


No.	Part No.	Description
-----	----------	-------------

Note All parts are included in a part set with the “ * “ mark are part components that cannot be ordered alone.

1	270 G1053	D.F shaft
2	SEE #27	D.F. locating collar
3	68024653	D.F. dial locating spring
4	SEE #28	D.F. regulate cam
5	270 A40101000	D.F. dial bushing
6	270 G1047	D.F. link bar
7	270 G1164	D.F. dial support
8		D.F. dial
9	270 G1054	D.F. regulate shaft
10	SEE #29	D.F. regulate support
11	SEE #30	D.F. slide support
12	416369601	D.F. slide block
13	68018294	Feed dog holder pin
14	SEE #31	Setting collar
15	68018357	D.F. slide block pin
16	68018361	D.F. link pin
17	270 G1273	Dial cup
18	68018024	E ring
19	68018027	E ring
20	68018061	Washer
21	68016525	Washer
22		Set screw
23	68018040	Set screw
24	68018041	Set screw
25	68018300	Set screw
26	68017035	Set screw
*27	416820301	D.F. locating collar set (No. 2 and 24 included)
*28	68024661	D.F. regulate cam set (No. 4 and 24 included)
*29	416673201	D.F. regulate support set (No. 10 and 23 included)
*30	416820601	D.F. slide support set (No. 11 and 24 included)
*31	416816101	Setting collar set (No. 14 and 23 included)

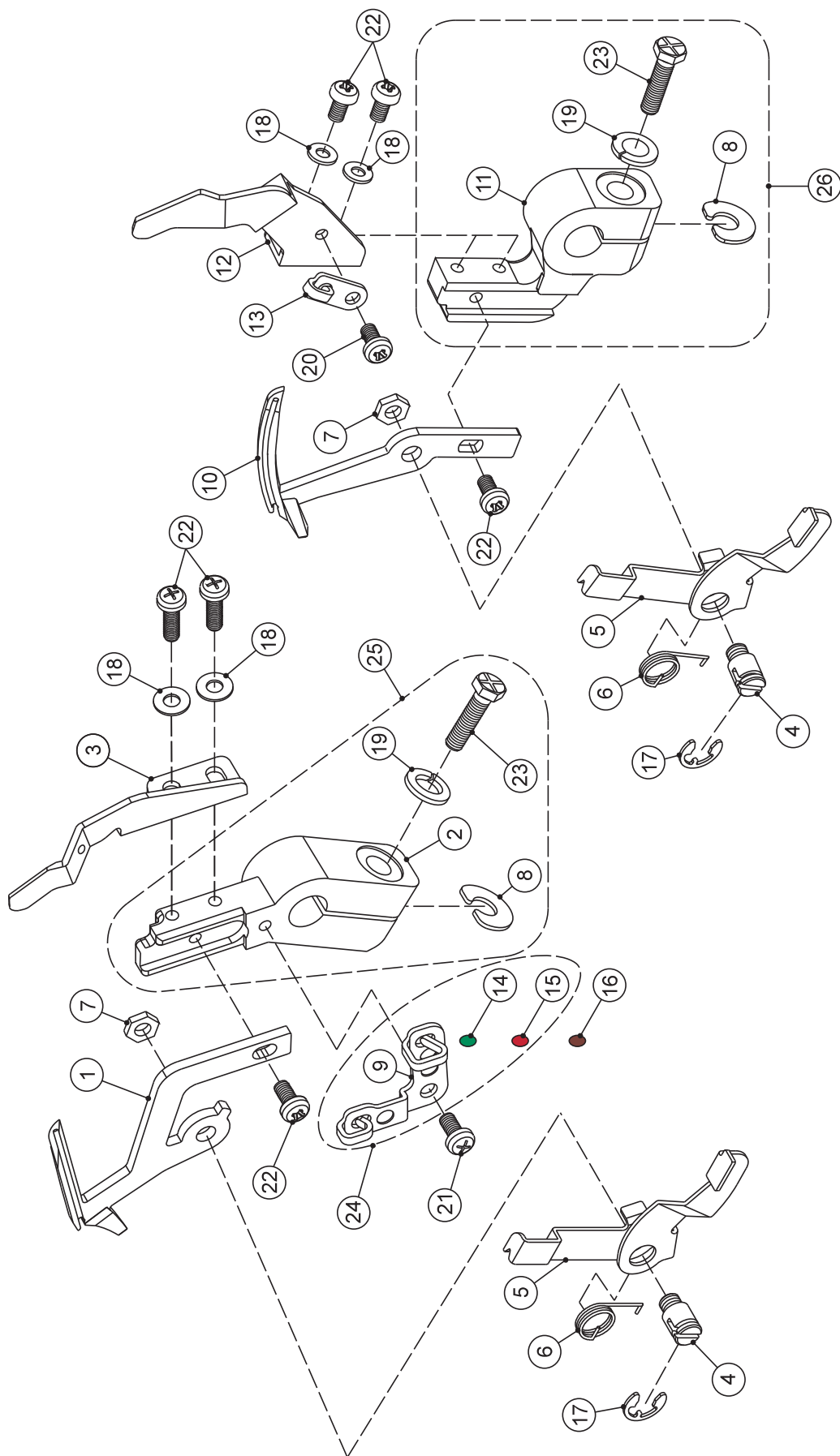
N



No.	Part No.	Description
-----	----------	-------------

Note All parts are included in a part set with the “ * “ mark are part components that cannot be ordered alone.

1	SEE #23	Feed dog cam
2	270 G1044	Feed dog holder (rear)
3	416369901	Feed dog (rear)
4	SEE #24	Feed dog holder (front)
5	416672201	Feed dog (front)
6	416363901	Feed dog supporter slide block
7	416370001	Feed dog supporter (front)
8	270 G1056	Feed dog holder pin
9	270 G10482	Feed dog shaking rod complete set
10	416816801	Looper shaft bushing (R)
11	68024662	Looper shaft bushing (L)
12	SEE #25	Setting collar
13	68018370	E ring
14	68016499	Washer
15		Washer
16	68018377	Washer
17	68016179	Set screw
18	68016178	Set screw
19	68018040	Set screw
20	68018041	Set screw
21		Set screw
22	68018369	Spring pin
* 23	416816701	Feed dog cam set (No. 1.20 included)
* 24	416821001	Feed dog holder (front) set (No. 4.19 included)
* 25	416816101	Setting collar set (No. 12.19 included)

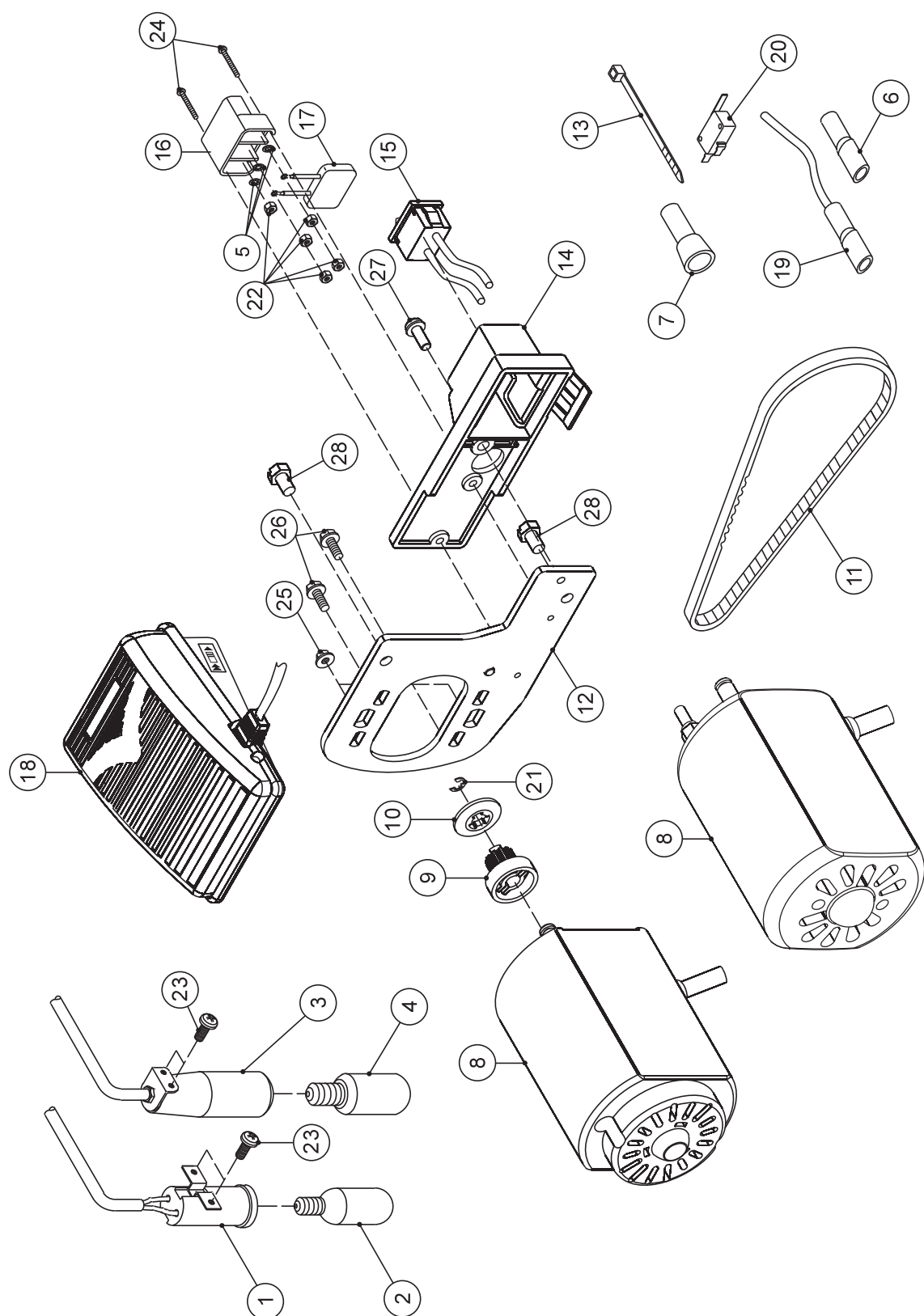




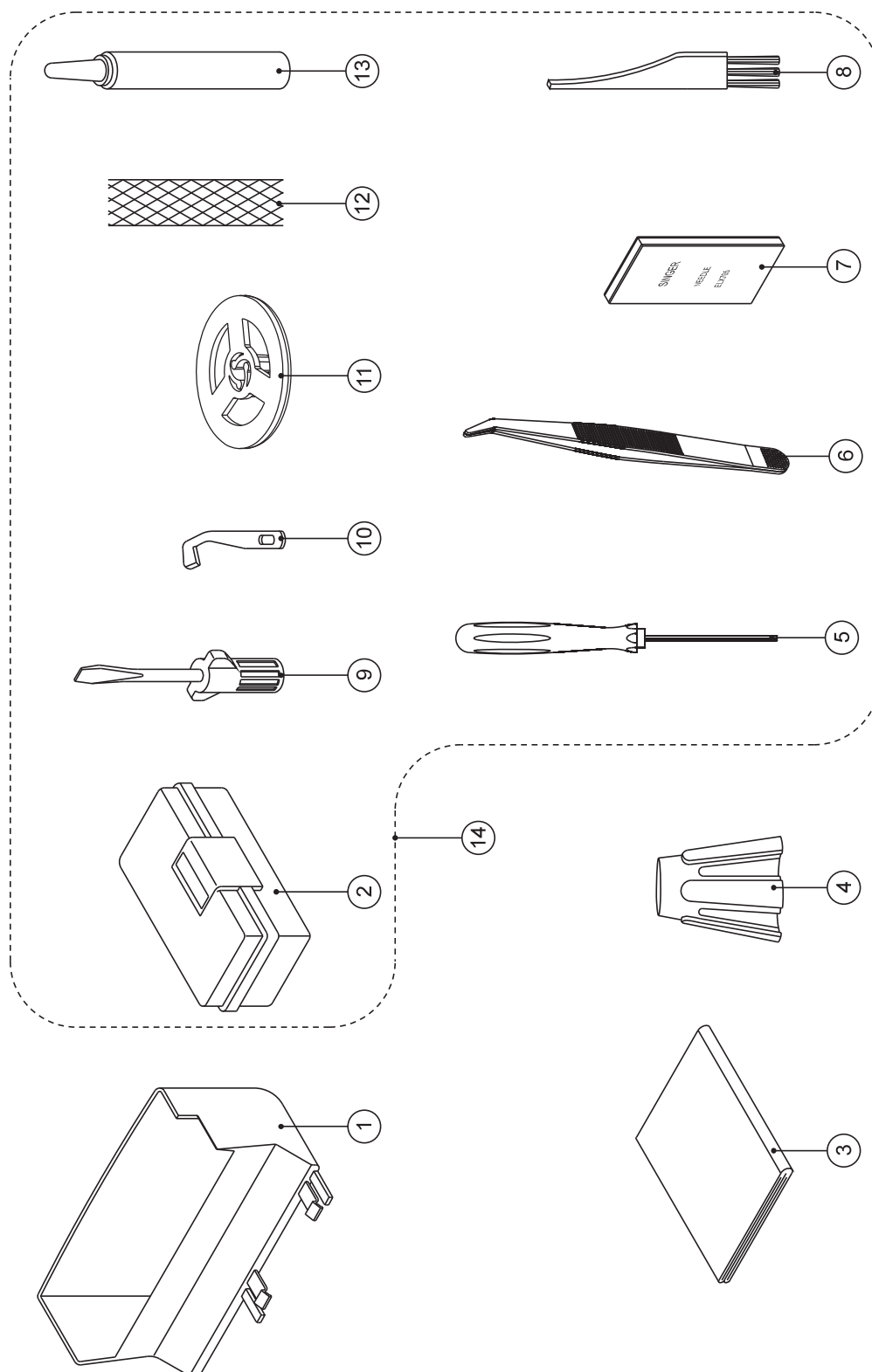
No.	Part No.	Description
-----	----------	-------------

Note All parts are included in a part set with the “ * “ mark are part components that cannot be ordered alone.

1	416370201	Lower looper
2	SEE #25	Lower looper supporter
3	416370401	Lower looper protect board
4	416370501	Auto threader shaft
5	416370601	Auto threader
6	416370701	Auto threader spring
7	416370801	Nut
8	68018541	Washer
9	SEE #24	Lower looper thread guide
10	416371101	Coverstitch looper
11	SEE #26	Coverstitch looper supporter
12	416371201	Coverstitch looper protect board
13	416371301	Coverstitch looper thread guide
14	270 A11481250	Color sticker (green)
15	270 A11481235	Color sticker (red)
16	270 A11481499	Color sticker (brown)
17	68016976	E ring
18	68018061	Washer
19	68018309	Washer
20	68018030	Set screw
21	68018039	Set screw
22	68016179	Set screw
23	68018372	Set screw
* 24	68024663	Lower looper thread guide set (No. 9.14.15 included)
* 25	68024664	Lower looper supporter set (No. 2.8.19.23 included)
* 26	68024666	Coverstitch looper supporter set (No. 8.11.19.23 included)
* 27	68024667	Coverstitch looper protect board set (No. 12.16 included)
28		Lower looper supporter set (No. 1.3.4.5.6.7.17.18.21.22.24.25 included)
29		Coverstitch looper supporter set (No. 4, 5, 6, 7, 10, 12, 13, 17, 18, 20, 22 and 26 included)



No.	Part No.	Description
1	270 EE001	Lighting set for 120V
1	270 EE003	Lighting set for 100V
2	416299801	Bulb for 100V
2	416299901	Bulb for 120V
3	270 EE002	Lighting set for 220V~240V (Available for 220V/230V/240V)
4	416300001	Bulb for 220V~240V (Available for 220V/230V/240V)
5	416598101	Washer
6	68019097	Terminal w/un-transparent insulation tube
7	270 EE0081000	C4 End terminal
8		Motor (100V) Japan
8	416485801	Motor (115V) U.S.A.
8		Motor (220V) Korea
8	416371801	Motor (230V) Europe
9	416302101	Timing belt pulley
10	416372001	Timing belt pulley cover
11	270 A1O011000	Timing belt
12	416821401	Motor supporter
13	270 EE0112004	Cord clip
14	416821501	Switch supporter
15	416372301	Switch
16	68019094	Machine socket
17	416372501	Condenser for 100V
17	68024520	Condenser for 100V & 220V~240V
17	68024521	Condenser for 220V~230V
18		Foot controller (100V) Japan
18	416372901	Foot controller (115V) U.S.A.
18		Foot controller (220V) Argentina
18		Foot controller (220V) The Middle East
18		Foot controller (220V) The Middle East-Grey
18	416810101	Foot controller (220V) South Africa
18		Foot controller (240V) Aus.& New Zealand
18	416810201	Foot controller (220V) Europe
18		Foot controller (220V) Argentina
18		Foot controller (240V) U.K.
18		Foot controller (240V) Saudi Arabia
18		Foot controller (240V) India
19	270 EE0501000	Terminal w/transparent insulation tube
20	68019096	Micro swutch
21	68016976	E ring
22	68018298	Nut (230V*5PCS / 120V*3PCS)
23	68018032	Set screw
24	68019102	Set screw
25	68018564	Nut (100V / 120V)
26	68018565	Set screw (230V)
27	68018053	Set screw
28	68018303	Set screw



No.	Part No.	Description
1	68024669	Chip box
1		Chip box
2	416383401	Accessory box
3	270 A1U011000	Dust cover
4	270 A1V011567	Cone holder
4	416360701	Cone holder
5	416596901	Hexagon driver
6	416373101	Tweezers
7	N2022BZ05AS	Needle x 5
8	416040901	Cleaning brush
9	270 A1F011211	Screw driver
10	416364601	Upper knife
11	416383601	Spool caps
11	416383801	Spool caps
12	416383901	Net
13	270 OIL	Oiler
14	416809701	Accessory box set (No. 2.5.6.7.8.9.10.11.12.13 included)